

Identifying the location of COVID-19 at risk groups in Bolton

Prepared by Lynn Donkin, Assistant Director/Consultant in Public Health, Shan Wilkinson
Public Health Principle and Chris Kirk, Public Health Analyst
16th April 2020

Population vaccination coverage - Flu (at risk individuals)

Flu vaccine uptake (%) in at risk individuals aged 6 months to 65 years (excluding pregnant women), who received the flu vaccination between 1st September to the end of February in a primary care setting (GPs).

Time period	Percent (%)	Uptake of flu vaccination	Number eligible for vaccination
2010/11	54.77	16,099	29,394
2011/12	55.82	17,224	30,858
2012/13	54.99	17,451	31,736
2013/14	55.29	17,722	32,051
2014/15	53.73	18,867	35,113
2015/16	49.58	19,295	38,918
2016/17	52.63	18,909	35,931
2017/18	54.45	21,266	39,057
2018/19	51.09	19,160	37,506

Clinical Risk Categories

- Chronic respiratory disease
- Chronic heart disease
- Chronic kidney disease
- Chronic liver disease
- Chronic neurological disease
- Diabetes
- Immunosuppression
- Asplenia or dysfunction of the spleen
- Pregnant women
- Morbid obesity

Population aged 65 and over

49,120 of Bolton residents are aged **65+**
This group makes up **17.2%** of the total population

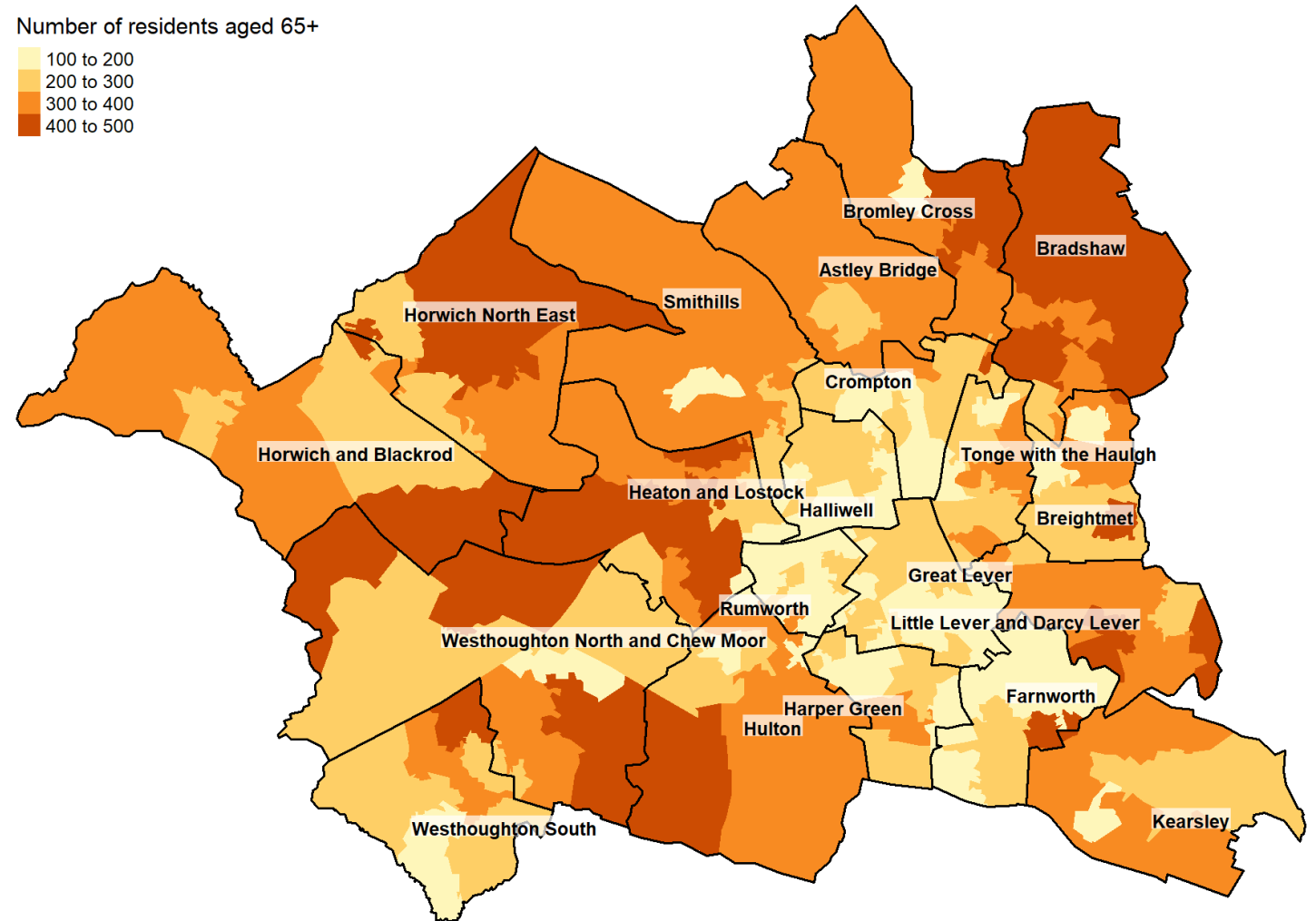
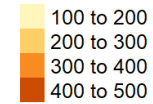
Highest wards by count and %:

- Bradshaw (3,106 = 27.0%)
- Heaton and Lostock (3,347 = 23.6%)
- Bromley Cross (3,158 = 23.1%)

Lowest wards by count and %:

- Rumworth (1,714 = 9.9%)
- Great Lever (1,685 = 10.6%)
- Halliwell (1,819 = 12.3%)

Number of residents aged 65+



Population aged 70 and over

35,038 of Bolton residents are aged **70+**
This group makes up **12.3%** of the total population

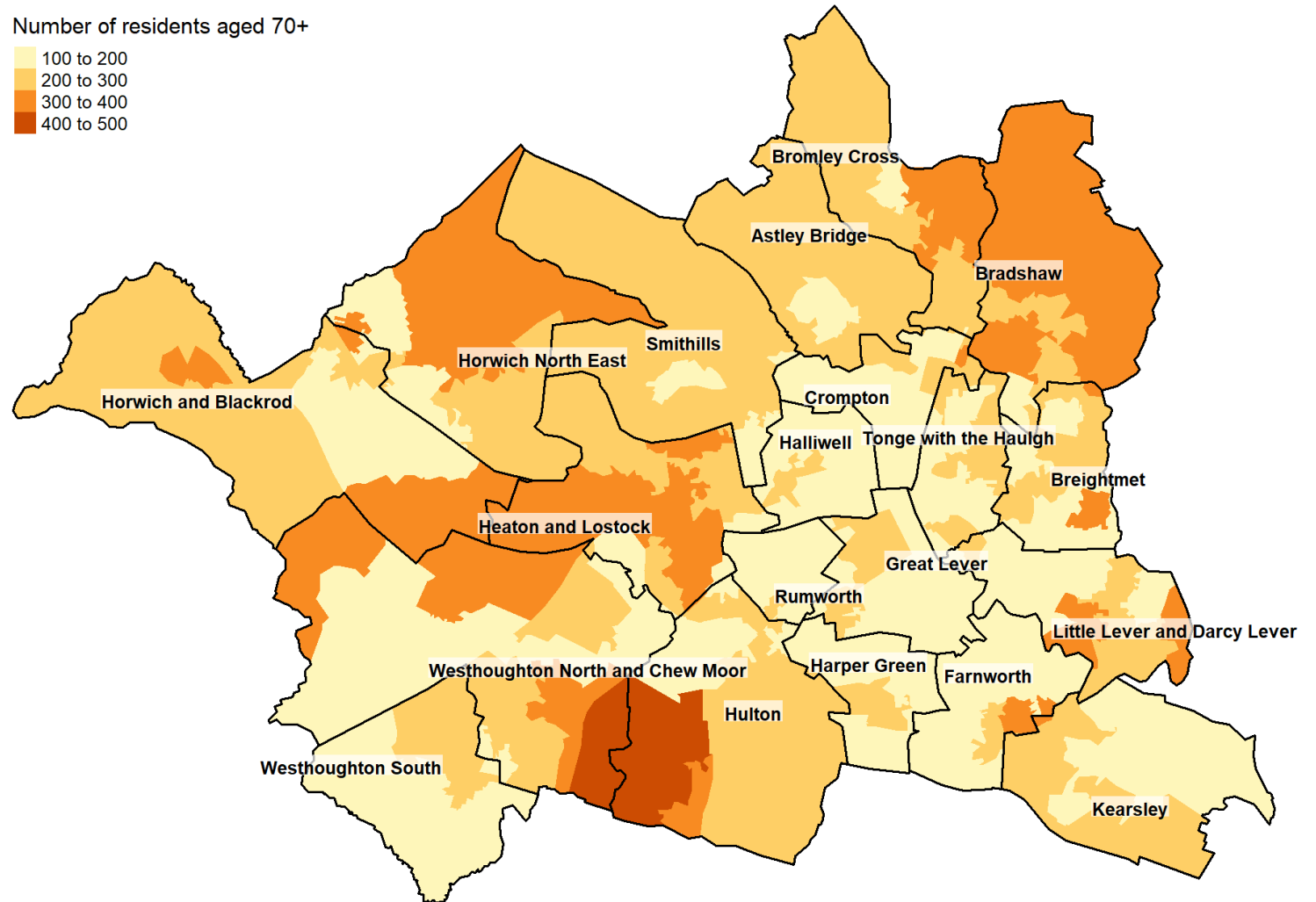
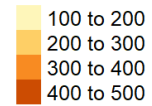
Highest wards by count and %:

- Heaton and Lostock (2,479 = 17.5%)
- Bradshaw (2,336 = 20.3%)
- Bromley Cross (2,257 = 16.5%)

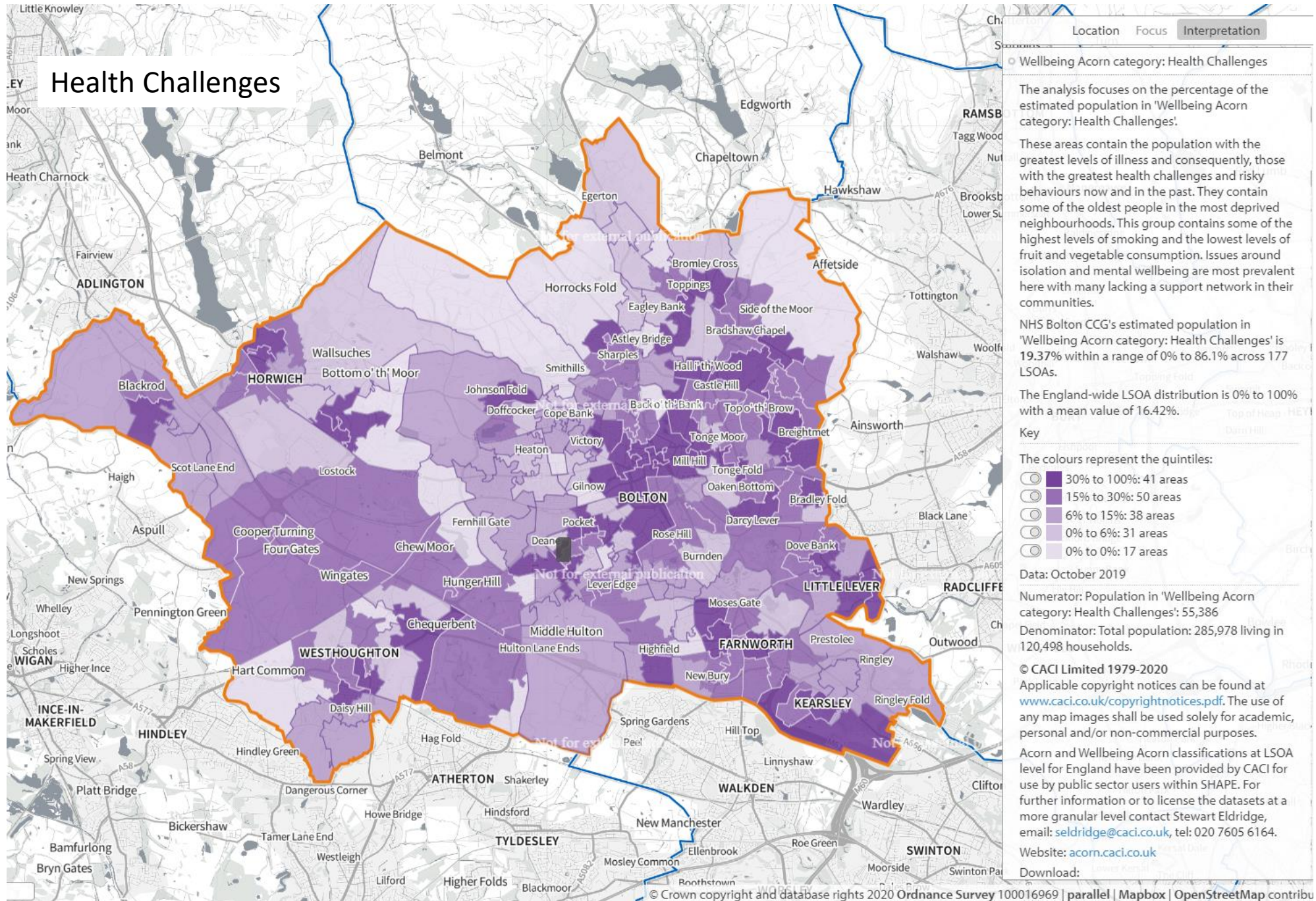
Lowest wards by count and %:

- Rumworth (1,144 = 6.6%)
- Great Lever (1,183 = 7.4%)
- Crompton (1,257 = 7.7%)

Number of residents aged 70+



Health Challenges



Location Focus Interpretation

Wellbeing Acorn category: Health Challenges

The analysis focuses on the percentage of the estimated population in 'Wellbeing Acorn category: Health Challenges'.

These areas contain the population with the greatest levels of illness and consequently, those with the greatest health challenges and risky behaviours now and in the past. They contain some of the oldest people in the most deprived neighbourhoods. This group contains some of the highest levels of smoking and the lowest levels of fruit and vegetable consumption. Issues around isolation and mental wellbeing are most prevalent here with many lacking a support network in their communities.

NHS Bolton CCG's estimated population in 'Wellbeing Acorn category: Health Challenges' is 19.37% within a range of 0% to 86.1% across 177 LSOAs.

The England-wide LSOA distribution is 0% to 100% with a mean value of 16.42%.

Key

The colours represent the quintiles:

- 30% to 100%: 41 areas
- 15% to 30%: 50 areas
- 6% to 15%: 38 areas
- 0% to 6%: 31 areas
- 0% to 0%: 17 areas

Date: October 2019

Numerator: Population in 'Wellbeing Acorn category: Health Challenges': 55,386

Denominator: Total population: 285,978 living in 120,498 households.

© CACI Limited 1979-2020

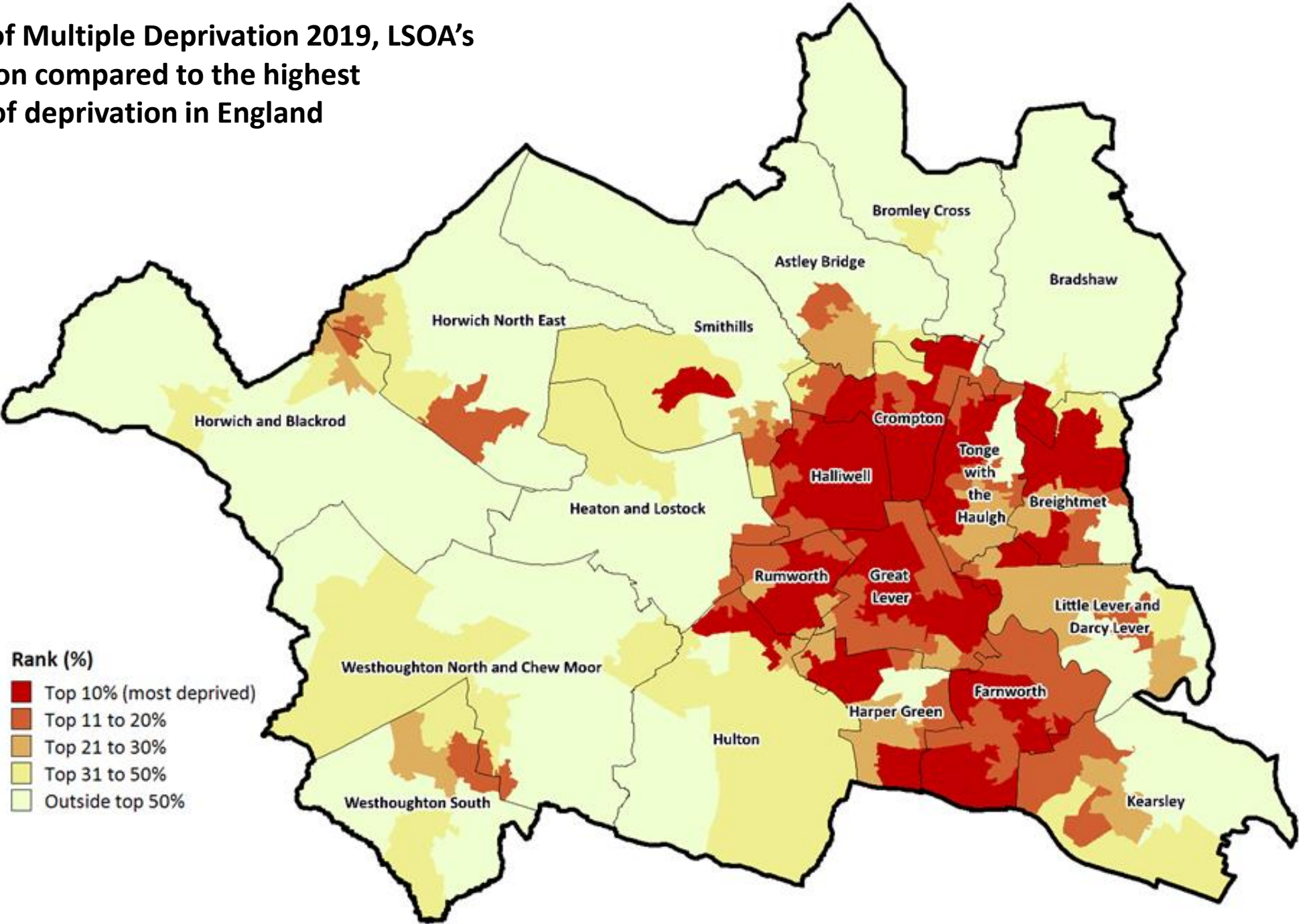
Applicable copyright notices can be found at www.caci.co.uk/copyrightnotices.pdf. The use of any map images shall be used solely for academic, personal and/or non-commercial purposes.

Acorn and Wellbeing Acorn classifications at LSOA level for England have been provided by CACI for use by public sector users within SHAPE. For further information or to license the datasets at a more granular level contact Stewart Eldridge, email: seldridge@caci.co.uk, tel: 020 7605 6164.

Website: acorn.caci.co.uk

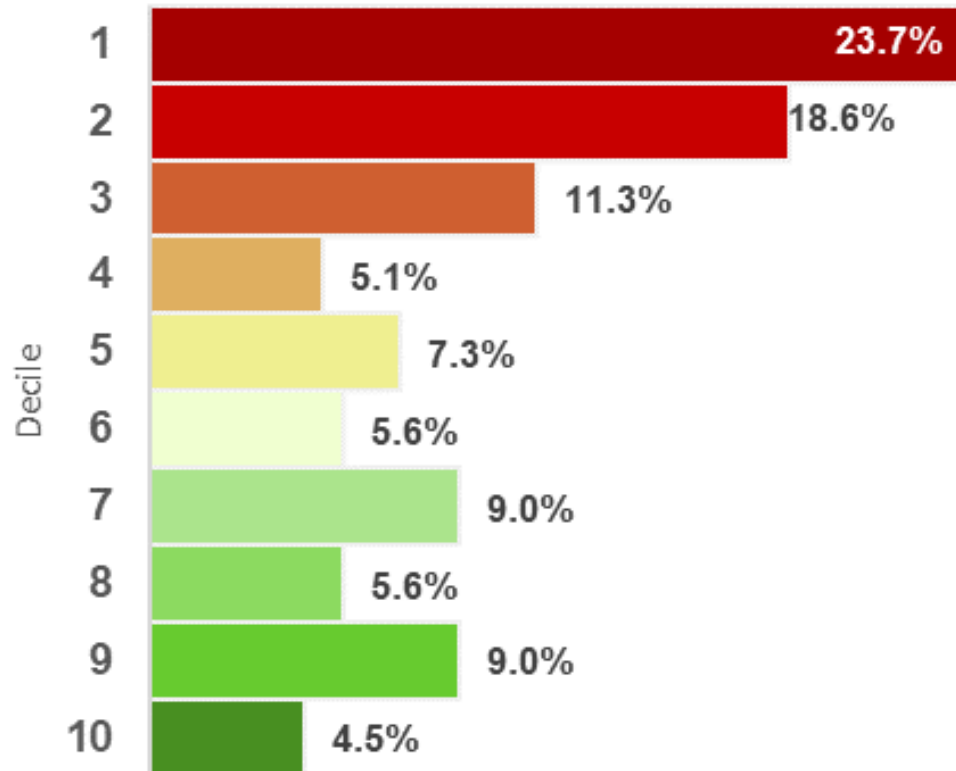
Download:

Index of Multiple Deprivation 2019, LSOA's in Bolton compared to the highest levels of deprivation in England



Index of Multiple Deprivation 2019

LSOAs in each national deprivation decile
Bolton, index of multiple deprivation 2019

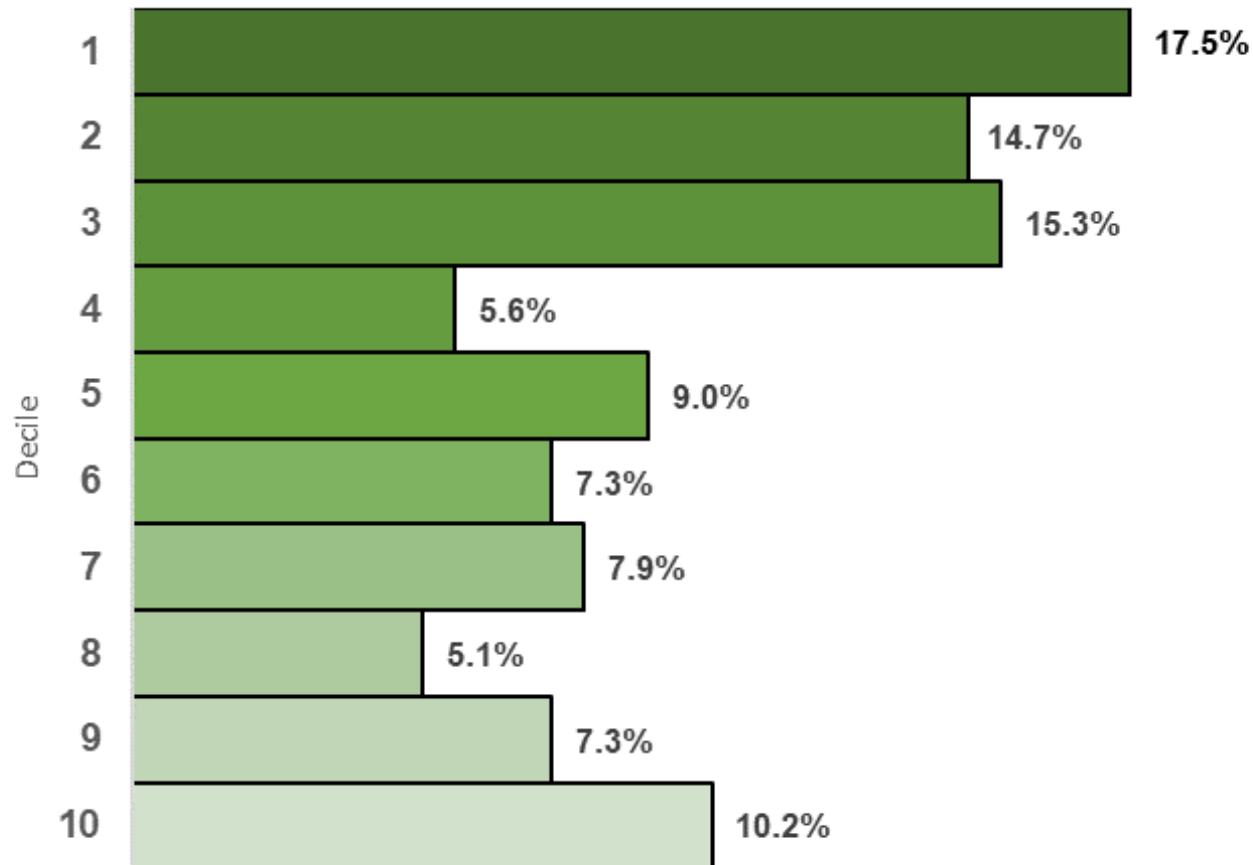


Of Bolton's LSOAs **42 (23.7%)** rank within the 10% most deprived areas in the country

The **four** most deprived neighbourhoods in Bolton today are Bolton 016C which is located in **Halliwell** near the town centre, Bolton 016F in **Crompton** near the town centre, followed by Bolton 013A in **Brightmet** and Bolton 012B in **Johnson Fold**

Income Deprivation Affecting Children Index 2019 (DACI)

LSOAs in each national deprivation decile for Bolton
Income Deprivation Affecting Children Index 2019



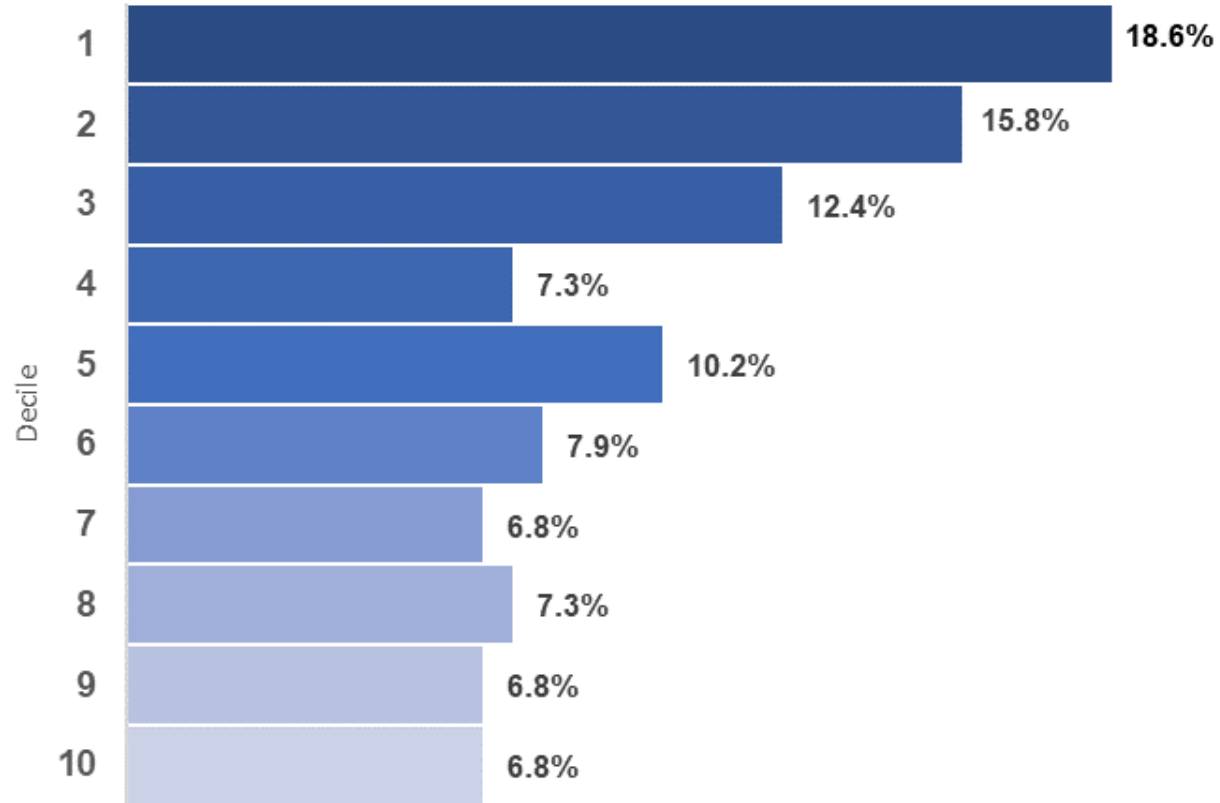
17.5% of all LSOA's in Bolton for income deprivation affecting children, are in the top 10% most deprived areas of the country.

Over half of Farnworth's LSOA's for child deprivation are in the 10% most deprived decile.

Halliwel has **6** LSOAs in the top 10% most deprived areas for child deprivation., the second largest number of LSOAs for a ward in Bolton.

Income Deprivation Affecting Older People Index 2019 (IDAOP)

LSOAs in each national deprivation decile for Bolton
Income Deprivation Affecting Older People Index 2019

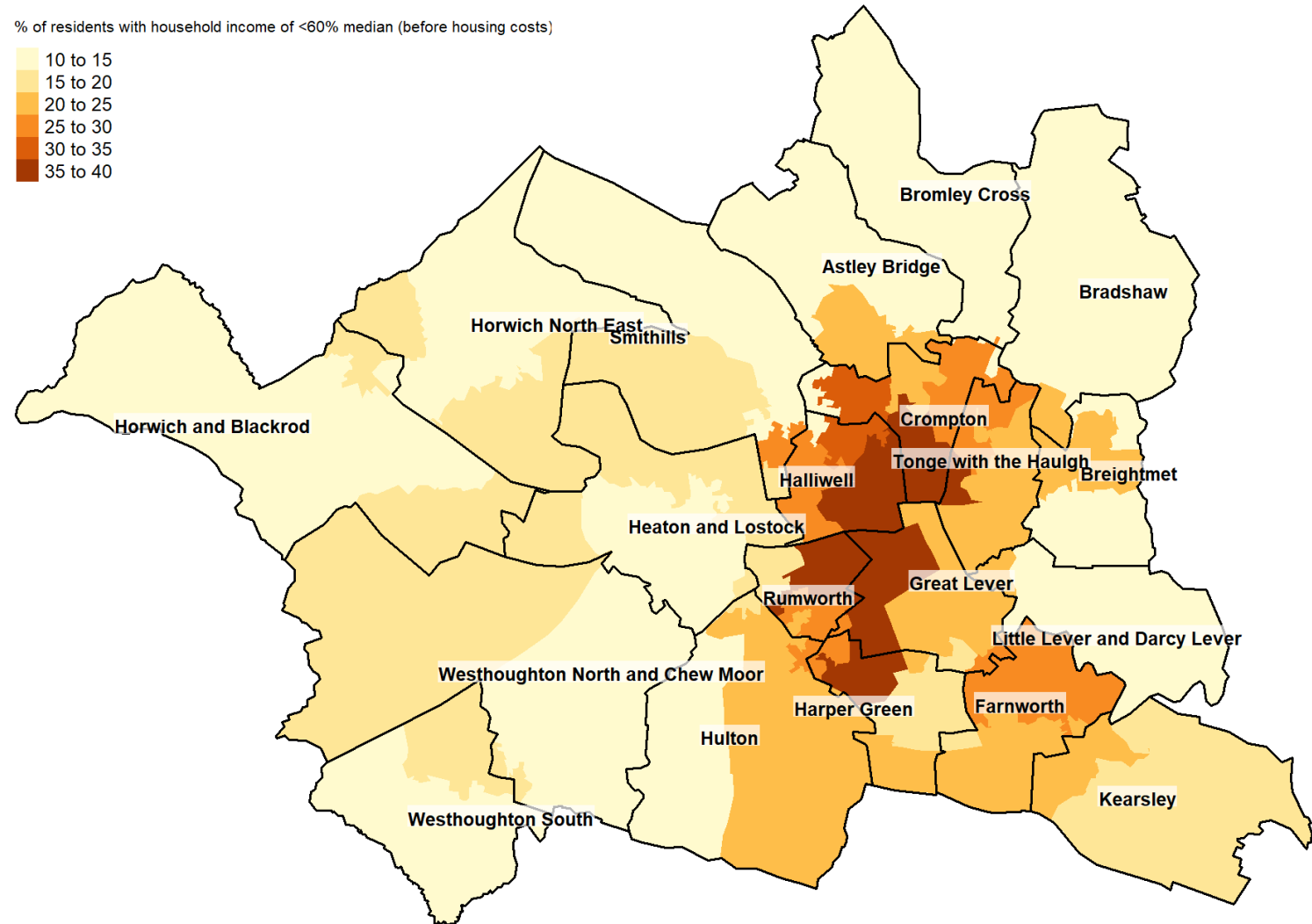


18.6% of all LSOA's in Bolton for income deprivation affecting older people, are in the top 10% most deprived areas of the country.

Rumworth, Crompton and Halliwell all contain the highest proportion of LSOA's for IDAOP in the 10% most deprived decile.

Households below 60% of the median income, by MSOA

The highest proportion of households below 60% of the median income (before housing costs), are found in the wards of Rumworth, Halliwell, Great Lever and Crompton



Long-term health problem or disability, were day-to-day activities limited

Bolton has around **55,000** residents with a long term health problem or disability, were their day-to-day activities are limited a little to a lot.

This equates to about **20%** of Bolton's population.

Highest wards by count and percent (%):

- Halliwell (3,510 = 24.6%)
- Farnworth (3,818 = 23.1%)
- Brightmet (3,405 = 22.8%)

Lowest wards by count and percent (%):

- Bromley Cross (1,942 = 15.3%)
- Westhoughton North and Chew Moor (2,431 = 16.7%)
- Heaton and Lostock (2,298 = 16.7%)

Ward	Number of daily activities limited	Proportion of daily activities limited
Halliwell	3,510	24.6%
Farnworth	3,818	23.1%
Brightmet	3,405	22.8%
Tonge with the Haulgh	3,129	21.6%
Harper Green	2,775	21.2%
Crompton	3,022	20.8%
Great Lever	3,345	20.8%
Little Lever and Darcy Lever	2,536	20.6%
Rumworth	2,973	20.4%
Hulton	2,934	20.4%
Horwich and Blackrod	2,413	19.8%
Bradshaw	2,182	19.1%
Kearsley	2,692	18.9%
Smithills	2,715	18.9%
Horwich North East	2,326	18.5%
Astley Bridge	2,327	17.6%
Westhoughton South	2,140	16.9%
Heaton and Lostock	2,298	16.7%
Westhoughton North and Chew Moor	2,431	16.7%
Bromley Cross	1,942	15.3%

Living Alone

Almost a third of Bolton households are a one person household, of which, 40% are made up of people aged over 65

Highest wards that contain one person households, by count and percent (%):

- Halliwell (3,090 = 47.2%)
- Tonge with the Hough (2,466 = 37.9%)
- Farnworth (2,579 = 36.2%)

Lowest wards that contain one person households, by count and percent (%):

- Westhoughton North and Chew Moor (1,644 = 26.8%)
- Bromley Cross (5,386 = 25.8%)
- Heaton and Lostock (5,509 = 24.3%)

Ward	Number of one person household	Proportion of one person households
Astley Bridge	1,740	30.9%
Bradshaw	1,327	26.9%
Brightmet	2,044	31.8%
Bromley Cross	1,390	25.8%
Crompton	2,119	36.0%
Farnworth	2,579	36.2%
Great Lever	2,031	33.9%
Halliwell	3,090	47.2%
Harper Green	1,382	27.6%
Heaton and Lostock	1,341	24.3%
Horwich and Blackrod	1,644	30.7%
Horwich North East	1,637	29.8%
Hulton	1,947	31.7%
Kearsley	2,068	33.0%
Little Lever and Darcy Lever	1,456	27.7%
Rumworth	1,902	35.4%
Smithills	1,860	30.4%
Tonge with the Haulgh	2,466	37.9%
Westhoughton North and Chew Moor	1,644	26.8%
Westhoughton South	1,424	27.0%