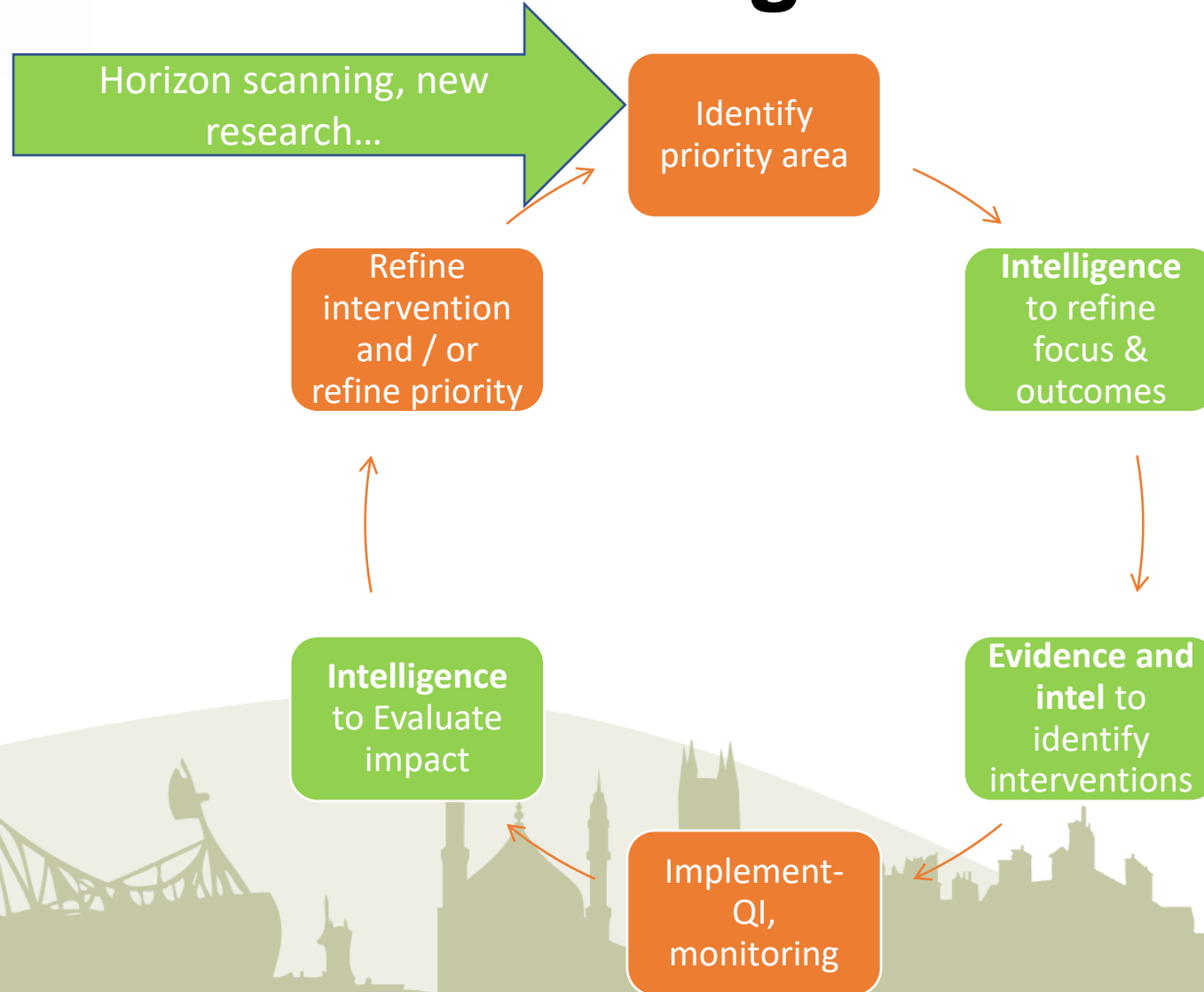


BRAIN - Bolton Research and Intelligence Network

February 2023



Ambition: Intelligence Led Borough



Ambition: Decision Quality

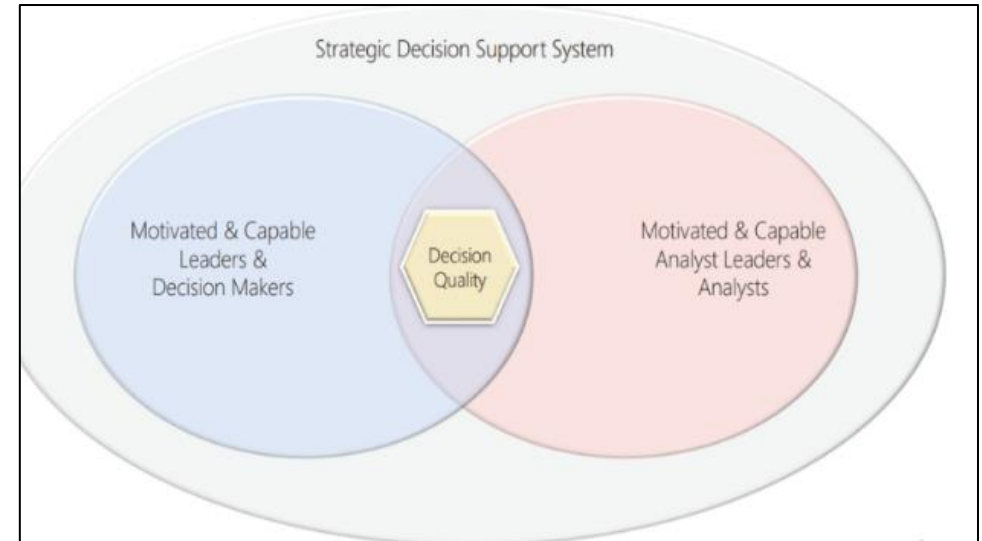
Strategic Partnerships – common understanding of strategic needs and assets; best use of resources to achieve Vision outcomes. Relationship building

Elected Members – small area intelligence and insight about local issues to support informed decision making and influencing

Local Authority, NHS – identify potential improvements and savings, strengthen decision-making and relationships

Community and Voluntary Groups – local intelligence with context to support bids for funding and service design. Opportunities to share community insights and experience to influence Partnership decisions.

For Residents – transparency, access to open data, better use of data and reduced duplication. Identifying assets and challenges early and visible influence on public services



Executive Intelligence Group

Intelligence Hub

Researchers
Analysts and Data Scientists
Engagement and Consultation Leads
Safeguarding and quality reviewers

BRAIN

What is it?: Virtual **Network** from across the Bolton Vision Partnership in various fora, including **Executive Intelligence Group** and **Intelligence 'hub'**. Doesn't replace local teams or governance or have dedicated capacity.

Overall Aim: to embed use of good evidence and intelligence in decision making across Bolton

Objectives: increase collaboration (formal / informal), enhance capacity and capabilities, reduce duplication, provide expert challenge and support during development of priorities and actions

Activities:

- JSNA and Pharmaceutical Needs Assessment (PNA) including census 2021 analysis
- Strategic intelligence for the Active Connected Prosperous Board and Vision Outcomes
- Analytical & data strategy including data literacy, self-serve, open data
- Advice and support for digital transformation and infrastructure
- Intelligence workforce development and culture
- Advocacy for engagement in and use of quality research
- Quality improvement and use of intelligence in practice



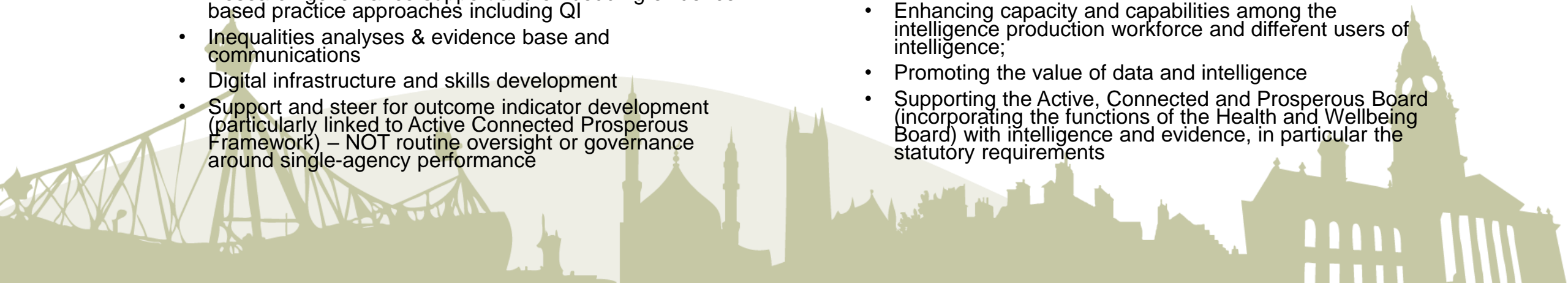
Brain main groups

Intelligence Hub

- Monthly meeting of technical experts and those involved in production and use of intelligence
- Supports knowledge exchange, co-ordination and recommendations for joint projects
- Peer support and co-ordination including:
 - Direction for and production of Joint Strategic Needs Assessment (JSNA)
 - Support for individual needs assessments
 - Research governance support and embedding evidence-based practice approaches including QI
 - Inequalities analyses & evidence base and communications
 - Digital infrastructure and skills development
 - Support and steer for outcome indicator development (particularly linked to Active Connected Prosperous Framework) – NOT routine oversight or governance around single-agency performance

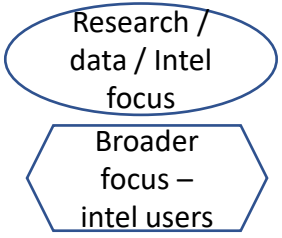
Exec intelligence group

- A group for people working in strategic leadership roles where this can be enhanced by increased use of evidence and intelligence
- Aims to add value to existing intelligence arrangements by creating environments and culture in which good quality intelligence can be produced, shared and used at all points in policy development and decision-making
- Particular aims include:
 - Promoting quality and standards for intelligence
 - Enhancing capacity and capabilities among the intelligence production workforce and different users of intelligence;
 - Promoting the value of data and intelligence
 - Supporting the Active, Connected and Prosperous Board (incorporating the functions of the Health and Wellbeing Board) with intelligence and evidence, in particular the statutory requirements



Partnership

Single Sector



Active, Connected and Prosperous Board		Active, Connected and Prosperous Executive Group
Active, Connected & Prosperous Board Climate Adverse childhood experiences Aspirations and skills Neighbourhoods	ACP Executive Lead Chief Finance Officer at Bolton FT Director of Public Health Principal at Bolton College Chief Executive at Bolton FT	Supporting Partnership Clean and Green Partnership Children and Young People's Partnership Team Bolton Employment & Skills Partnership Integrated Care Partnership

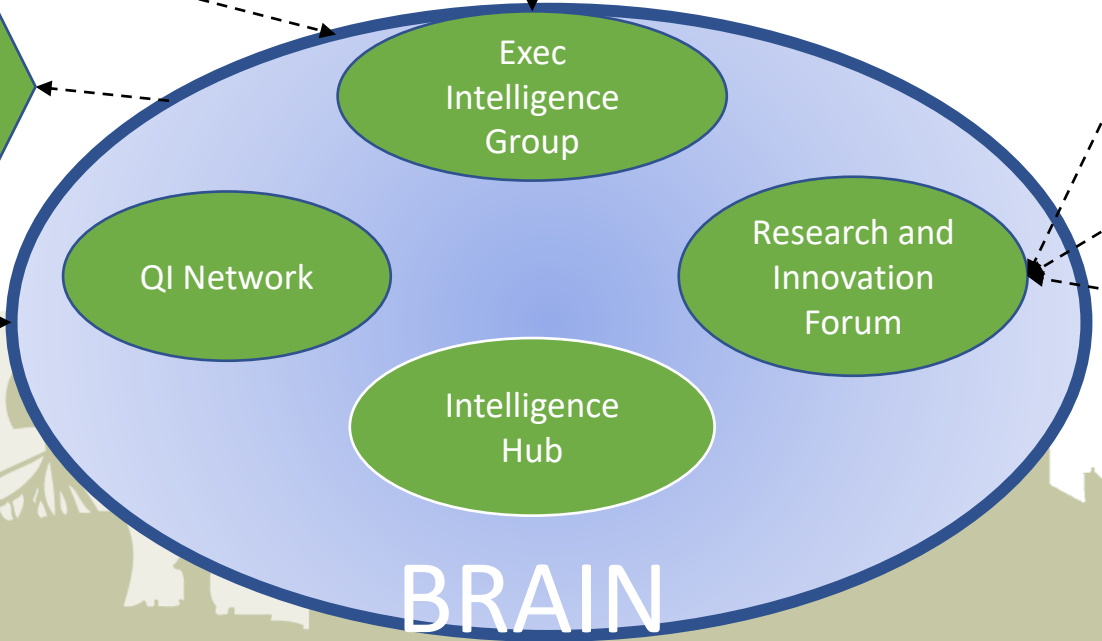
LOCALITY BOARD



Other partnerships e.g. CSP; Safeguarding Boards; Health and Housing;

Bolton Borough-wide Digital Partnership

Individual performance monitoring and management processes – shared if nec. for strategic purposes



Council Research Governance (NIHR support)

NHS Research Governance

University Research Governance



Focus in 2022...



Embedding BRAIN: relationships, structures, assets



Enabling Research – harnessing expertise across Bolton, culture change and skills for increased investment



ACP Outcomes Framework: support theme leads to identify key outcomes and indicators and sources



Population and topic analysis: JSNA, access and use. (e.g. climate change; inequalities; census; mental health, domestic abuse...)



Digital Transformation: expert reference group for infrastructure and strategies



Service delivery model reviews: Bespoke intelligence input to help shape services

Focus in 2023...

BRAIN Functions and Comms

Comms-
website,
webinar,
briefings

Census working
group

Work request
processes

JSNA development

local area
'profiles' /
resources

Response to
serious
violence duty +

Intelligence for
0-19 and
Family Hubs

ACP Theme Support

Indicators and
'story' for each
theme

Dashboard
development

'Data walks'

Technical developments

Joint data
warehouse pilot/
use cases (Digital
Transformation)

Data visualisation

Shared Teams
space

Embedding Research

Research
register and
gaps – student
projects

Bolton
Research
Forum

NIHR
workshop(s) to
support culture
change

Workforce Development

1. For intelligence
workforce
2. For users, to increase
data literacy, self-serve
etc

Specialist
training, away
days, speakers

'grow your own',
joint recruitment
and development

Support offer to
wider staff and
partners