



Health
Innovation
Manchester



Utilisation Management Unit

HEALTH INEQUALITIES DATA REPORT

MIND THE GAP MIND THE GAP MIND THE GAP

Westhoughton Primary Care Network
September 2021



DISCOVER



IMPROVE



EVALUATE



CHANGE



| | | |
|---------------------------------|---|--|
| Document Title | Health Inequalities Data Report: Westhoughton Primary Care Network | |
| Report requested by | Janet Castrogiovanni Managing Director Greater Manchester Primary Care Board (PCB) | |
| Author | Sarah Fretwell Analytical Manager The Utilisation Management Unit Part of Health Innovation Manchester Suite C, Third Floor Citylabs, Nelson Street Manchester, M13 9NQ Email: sarah.fretwell@nhs.net | |
| Data Analysis | Sarah Fretwell Analytical Manager The Utilisation Management Unit Part of Health Innovation Manchester | Paul White Senior Primary Care Analyst Greater Manchester Health and Social Care Partnership |
| Declaration of Interests | None <i>The UM Unit is part of Health Innovation Manchester which is hosted by Manchester University NHS Foundation Trust (MFT). Health Innovation Manchester accesses the human resources and finance functions within MFT but has its own corporate governance structures that report directly to the Health Innovation Manchester Board of Directors. This hosting arrangement enables the UM Unit to retain its independence and impartiality.</i> | |
| Internal Review by | Zoe Marsden Senior Information Analyst The Utilisation Management Unit Part of Health Innovation Manchester | |



Contents

01

Introduction

02

Key Findings

03

PCN Overview

04

Population
Demographics

05

Life Expectancy

06

Disease Prevalence

07

Disease Prevention

08

Wider Determinants of
Health

09

GP Practice Activity

10

Unplanned Hospital
Activity

11

Summary



01

Introduction





Project Brief



The Greater Manchester (GM) Primary Care Provider Board (PCB) have responsibility for the GM Primary Care Networks (PCN) Development Programme. One of the key work streams is the sourcing, collection, presentation and reporting of meaningful data for PCNs.

In March 2021 the Utilisation Management Unit (UM) produced a 'Health Inequalities Data Report' for each of the Tameside and Glossop (T&G) PCNs. The reports provided an overview of multiple health inequality indicators and associated benchmarking, drawn from a range of existing data sources.

The PCB has commissioned UM to replicate (where possible) the work done for T&G and to produce reports for the remaining 62 PCNs across GM.



02



Key Findings



Key Findings

Data had to be sought and collated from several different sources; not all were available on a GP practice or PCN footprint and/ or were current.

Significant analytical input has been required to present available data in a meaningful way.

Health outcome data by PCN, such as, cancer survival rates, mental health outcomes and mortality from cardiovascular and respiratory disease have not been locatable.

Whilst rich information likely exists at individual GP Practice level, PCN aggregated and linked datasets are not accessible for secondary use.

Interrogation and segmentation of PCN populations, for example, by patient demographics is not possible from data currently available for secondary use.

Actionable intelligence regarding PCN level health inequalities is limited in the absence of access to linked practice and patient level aggregated data.



03



PCN Overview



Westhoughton Network PCN

Collaborative of 2 GP Practices, located in the Westhoughton community neighbourhood;

| GP Practice Code | GP Practice | Electoral Ward | Community Neighbourhood |
|------------------|-------------------------|----------------------------------|-------------------------|
| P82005 | Stable Fold Surgery | Westhoughton North and Chew Moor | Westhoughton |
| P82015 | Unsworth Group Practice | Westhoughton North and Chew Moor | Westhoughton |

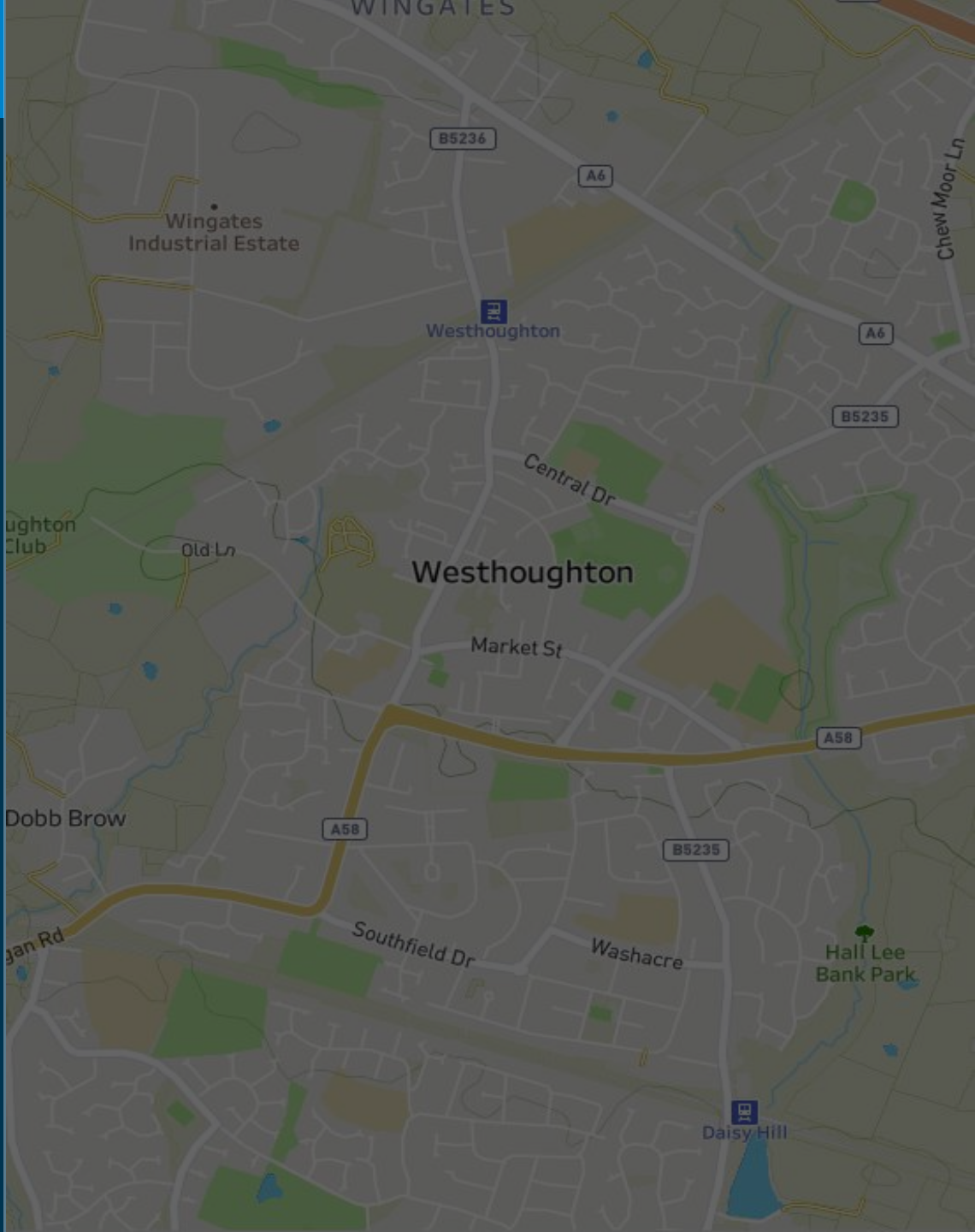
Data Source: GMHSCP

In order to establish the nature and level of health and socio-economic inequalities across Westhoughton Network PCN, data have been sought at GP Practice and PCN levels where available.

Where this has not been possible this will be highlighted within the report.

For example, some data items were only available by Bolton resident population (community neighbourhood) rather than by registered PCN population (health neighbourhood).

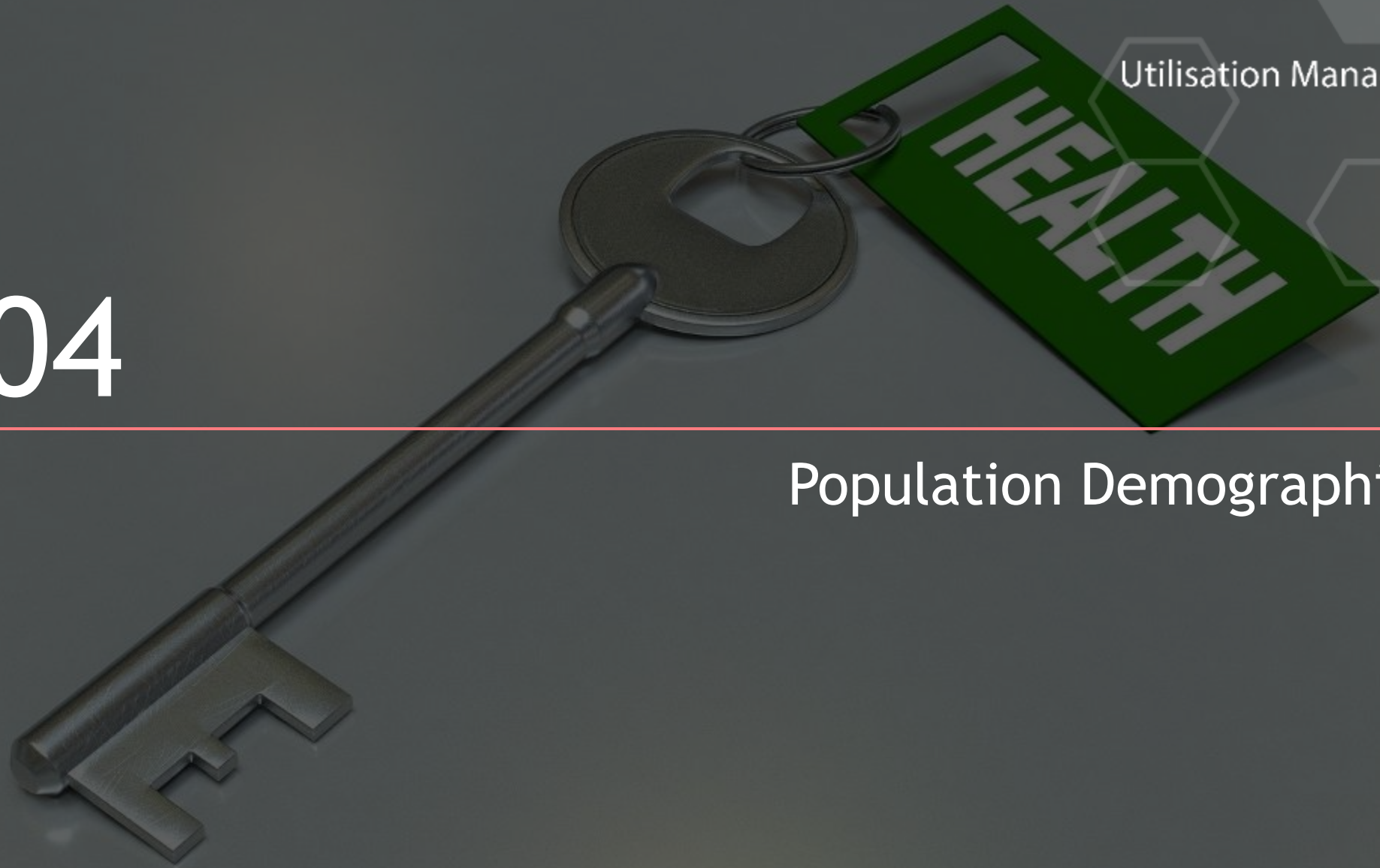
Benchmarking at Bolton CCG, GM and national levels have been presented where data are available.





04

Population Demographics





Westhoughton Network PCN Population



Utilisation Management Unit



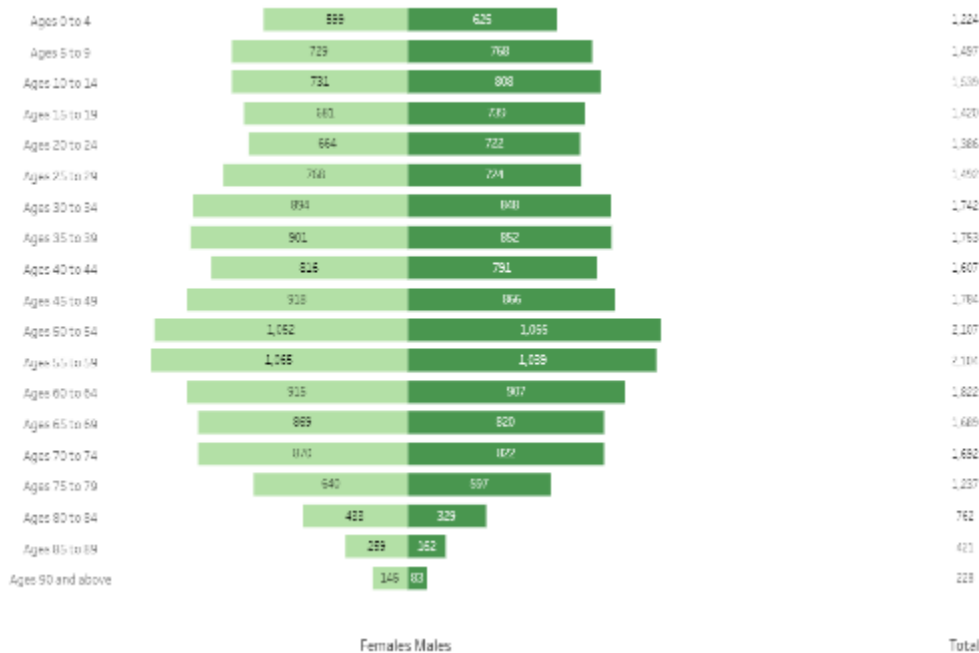
Current Registered Population = 27,506
Male: 49%; Female: 51%

Start well (0-18yrs): 20%

Live well (19-67yrs): 62%

Age well (67+yrs): 18%

Population Pyramid



Predicted CCG Population Growth Over the Next 10 Years

| Bolton CCG | Population Estimate 2021 | Population Estimate 2031 | % Change |
|------------------|--------------------------|--------------------------|------------------------|
| Age Group | | | |
| 0-19 | 74876 | 74002 | ↓1.17% (n=874) |
| 20-39 | 72049 | 69385 | ↓3.70% (n=2664) |
| 40-59 | 74063 | 72221 | ↓2.49% (n=1842) |
| 60-79 | 53882 | 59316 | ↑10.09% (n=5434) |
| 80+ | 12837 | 17519 | ↑36.47% (n=4682) |
| Total * | 287706 | 292443 | ↑1.65% (n=4737) |

Data Source: ONS

* Figures may not sum due to rounding

Data Source: GM PCN Dashboard, September 2021

Predicted population growth across the CCG is in the 60-79 and 80 plus year groups. The impact of the current Coronavirus pandemic on this predictive analysis is not known.



Vulnerable and At-Risk Groups

Ethnic Minorities

Current data have been sought but not found.

In 2011, 4.6% of the Westhoughton North and Chew Moor resident population was from an ethnic minority group.

Data Source:
2011 Census Data on Nomis,
Office for National Statistics

LGBTQ+

Current data have been sought but not found.

It was estimated in 2017 that 1.4% of the population in Bolton identified themselves as LGBT.

Data Source:
Subnational Sexual Identity, Office for National Statistics

Unpaid Carers

Current data have been sought but not found.

In 2011, the number people providing unpaid care in Westhoughton North and Chew Moor was 1,629 .

This number equates to 11.49% of the population.

Data Source:
2011 Census Data on Nomis,
Office for National Statistics

People whose 1st language is not English

Current data have been sought but not found.

0.4% (n=75) of Westhoughton North and Chew Moor households have no residents with English as a first language.

Data Source:
2011 Census Data on Nomis,
Office for National Statistics

Military Veterans

Current data have been sought but not found.

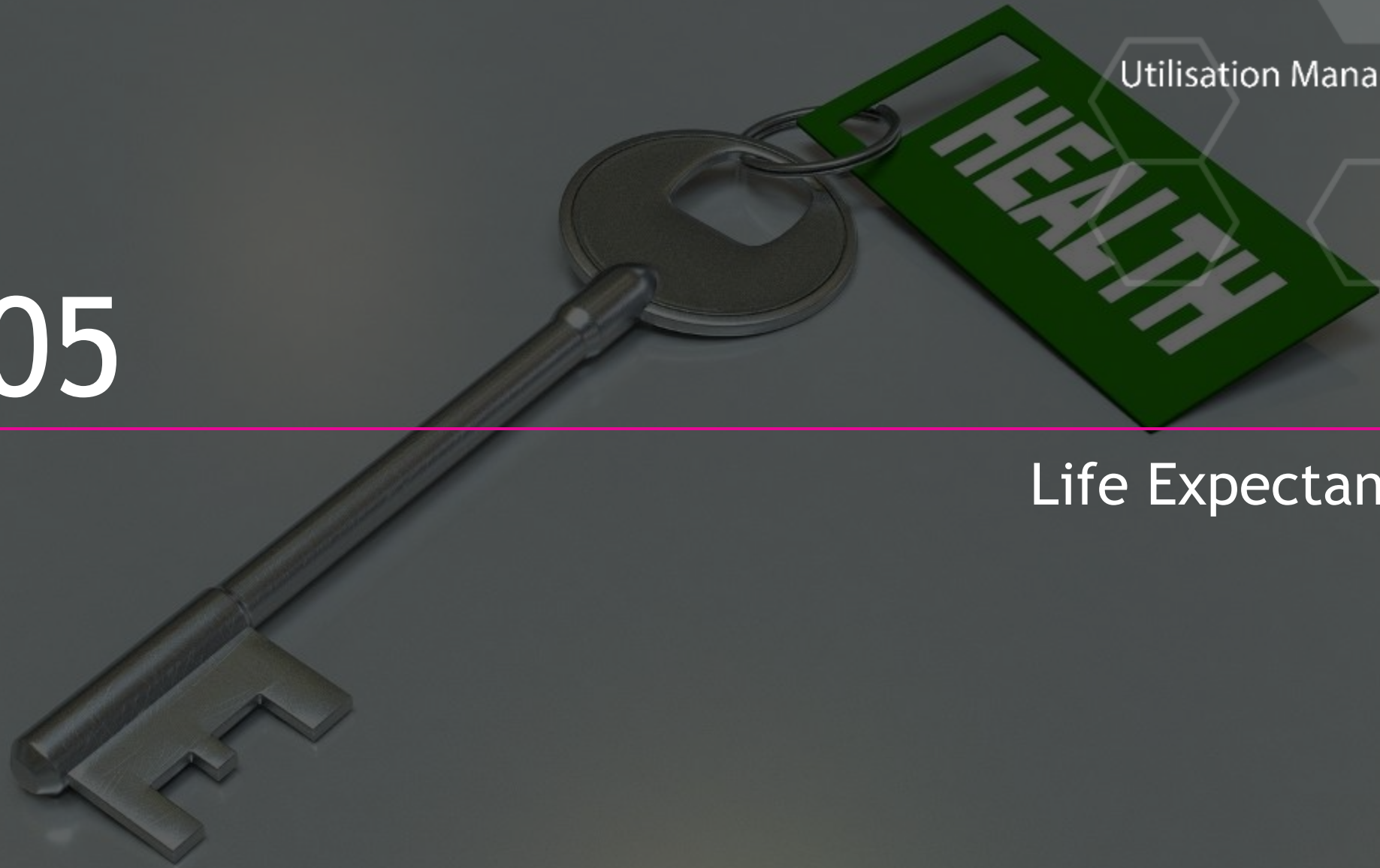
In 2017 it was estimated that 4% of the population of Greater Manchester were military veterans.

Data Source:
2017 Annual Population Survey: UK Armed Forces Veterans residing in Great Britain



05

Life Expectancy





Bolton Life Expectancy (Resident Population)

Male Life Expectancy

Bolton: 78.0 years

North West: 78.3 years

England: 79.6 years



Female Life Expectancy

Bolton : 81.5 years

North West: 81.9 years

England: 83.2 years



Male Healthy Life Expectancy

Bolton : 62.5 years

North West: 61.6 years

England: 63.4 years



Female Healthy Life Expectancy

Bolton : 58.4 years

North West: 62.5 years

England: 63.9 years



Male life expectancy from birth in Bolton is 1.6 years lower than the national average.

For women the gap is slightly larger at 1.7 years below the national average.

Healthy life expectancy is an estimate of lifetime spent in 'very good' or 'good' health based on how individuals perceive their health (ONS).

Figures for Bolton are below the national average by 0.9 years for men and by 5.5 years for women.

Data Source: Office for National Statistics (ONS)



Life Expectancy: Early Years

Premature Births (less than 37 weeks gestation)

Rate per 1,000 births.

| | Bolton | North West | England |
|---------|--------|------------|---------|
| 2010-12 | 75.9 | 77.9 | 75.7 |
| 2011-13 | 76.6 | 79.6 | 76.7 |
| 2012-14 | 79.7 | 81.4 | 77.6 |
| 2013-15 | 82.2 | 82.7 | 78.4 |
| 2014-16 | 86.9 | 84.7 | 79.5 |
| 2015-17 | 89.3 | 86.0 | 80.6 |
| 2016-18 | 89.3 | 86.3 | 81.2 |

Child Mortality (1-17 years)

Directly standardised rate of death due to all causes per 100,000 resident population, aged 1-17 years.

| | Bolton | North West | England |
|---------|--------|------------|---------|
| 2010-12 | 13.3 | 14.2 | 12.5 |
| 2011-13 | 10.7 | 13.5 | 11.9 |
| 2012-14 | 11.7 | 13.1 | 12.0 |
| 2013-15 | 10.4 | 14.0 | 11.9 |
| 2014-16 | 14.2 | 14.3 | 11.6 |
| 2015-17 | 15.8 | 14.1 | 11.2 |
| 2016-18 | 13.3 | 13.3 | 11.0 |
| 2017-19 | 12.4 | 12.6 | 10.8 |



06

Disease Prevalence





Asthma

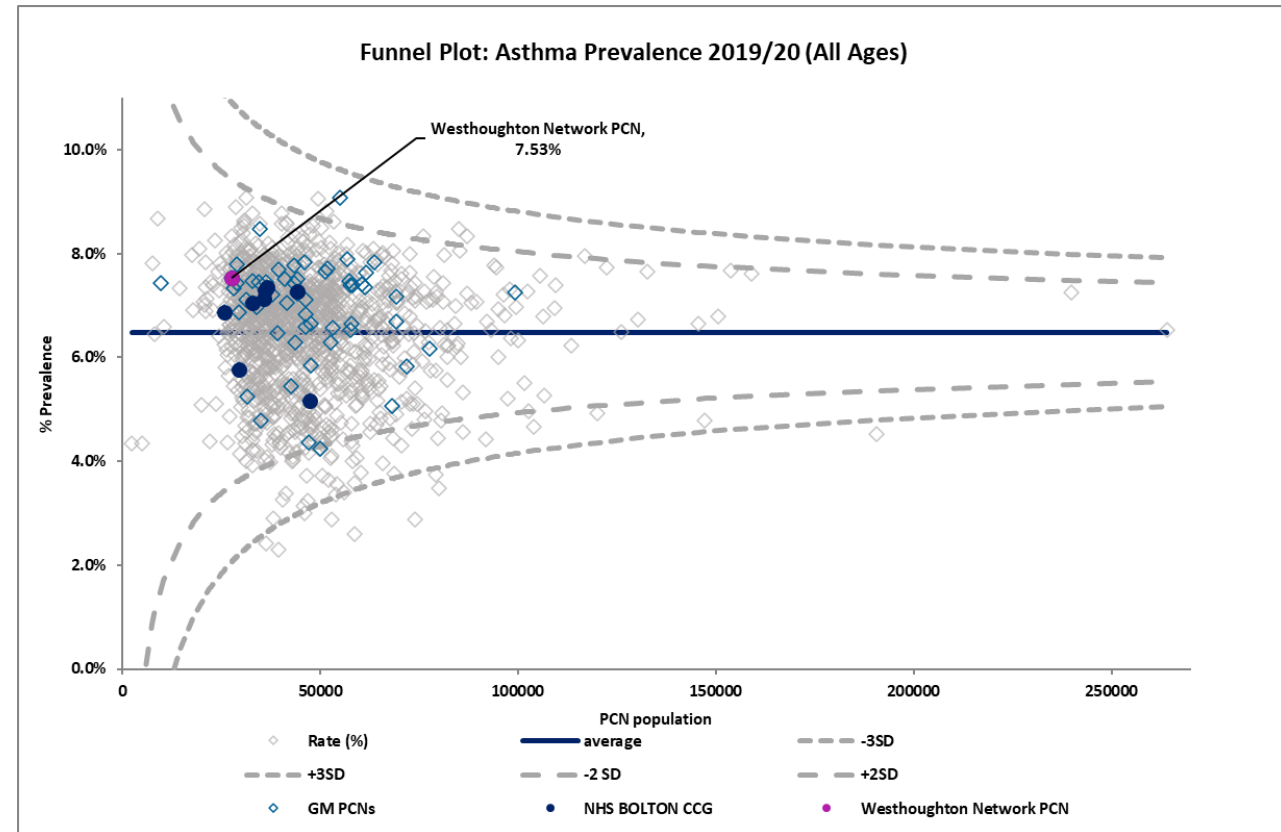
Data Source: Quality Outcomes Framework, 2019/20

| Westhoughton Network PCN | Practice Prevalence |
|--------------------------|---------------------|
| Asthma | |
| Stable Fold Surgery | 7.40% |
| Unsworth Group Practice | 7.57% |
| PCN Average | 7.53% |

| GM Average | England Average |
|------------|-----------------|
| 6.95% | 6.48% |

2019/20 data show that 68.62% were in receipt of an asthma review in the preceding 12 months.

Bolton Central PCN had the highest achievement rate across Bolton at 83.40%.



Westhoughton Network PCN's asthma prevalence is higher than GM and national rates.



Cancer

Data Source: Quality Outcomes Framework, 2019/20

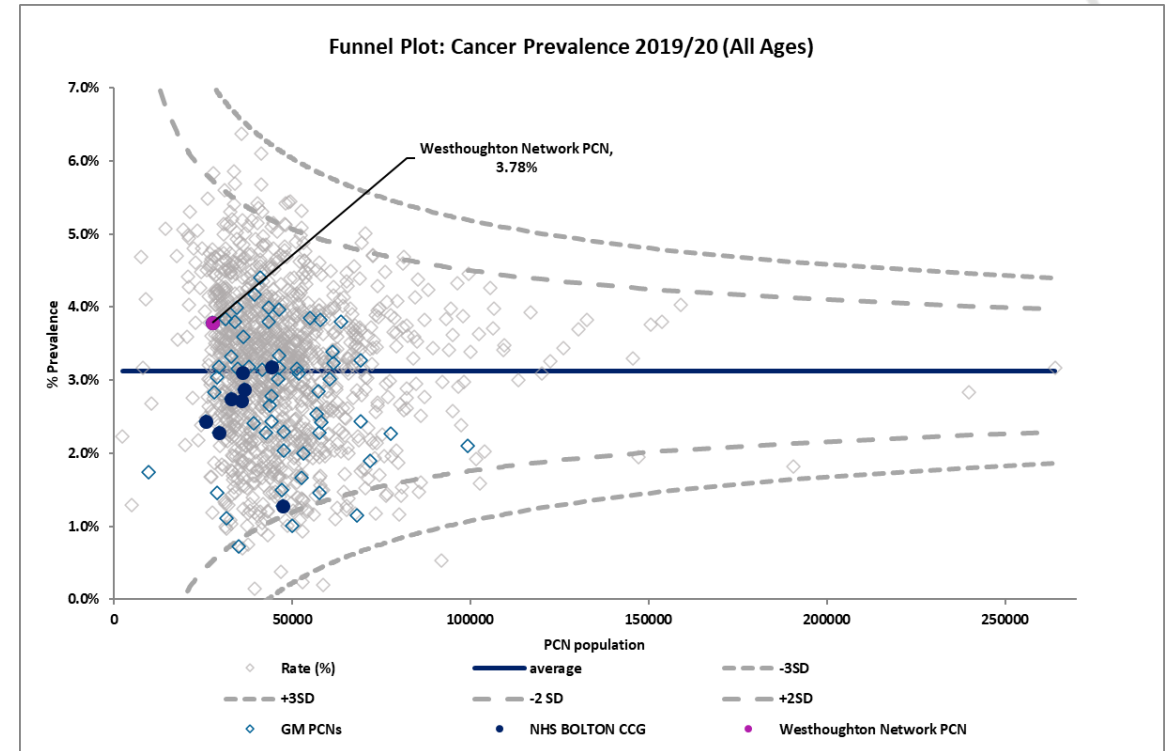
| Westhoughton Network PCN Cancer | Practice Prevalence |
|------------------------------------|---------------------|
| Stable Fold Surgery | 3.37% |
| Unsworth Group Practice | 3.93% |
| PCN Average | 3.78% |

| GM Average | England Average |
|------------|-----------------|
| 2.76% | 3.13% |

Westhoughton Network PCN's cancer prevalence is in keeping with the national average.

2019/20 data show that 97.37% of those diagnosed with cancer in the preceding 15 months, were in receipt of a review within 6 months of the date of diagnosis.

This was the highest achievement rate across Bolton CCG.



Information regarding PCN cancer outcomes has been sought but not found, however district level data for 2017-19 suggest survival rates are lower across Bolton.

| Fingertips PHE (2017-19) Per 100,000 Population | England | Bolton |
|--|---------|--------|
| Under 75 Mortality from Cancer | 129.2 | 136.9 |
| Under 75 Mortality from Cancer Considered Preventable | 54.1 | 64.0 |



Cardiovascular Disease- Primary Prevention (30-74 years)

Data Source: Quality Outcomes Framework, 2019/20

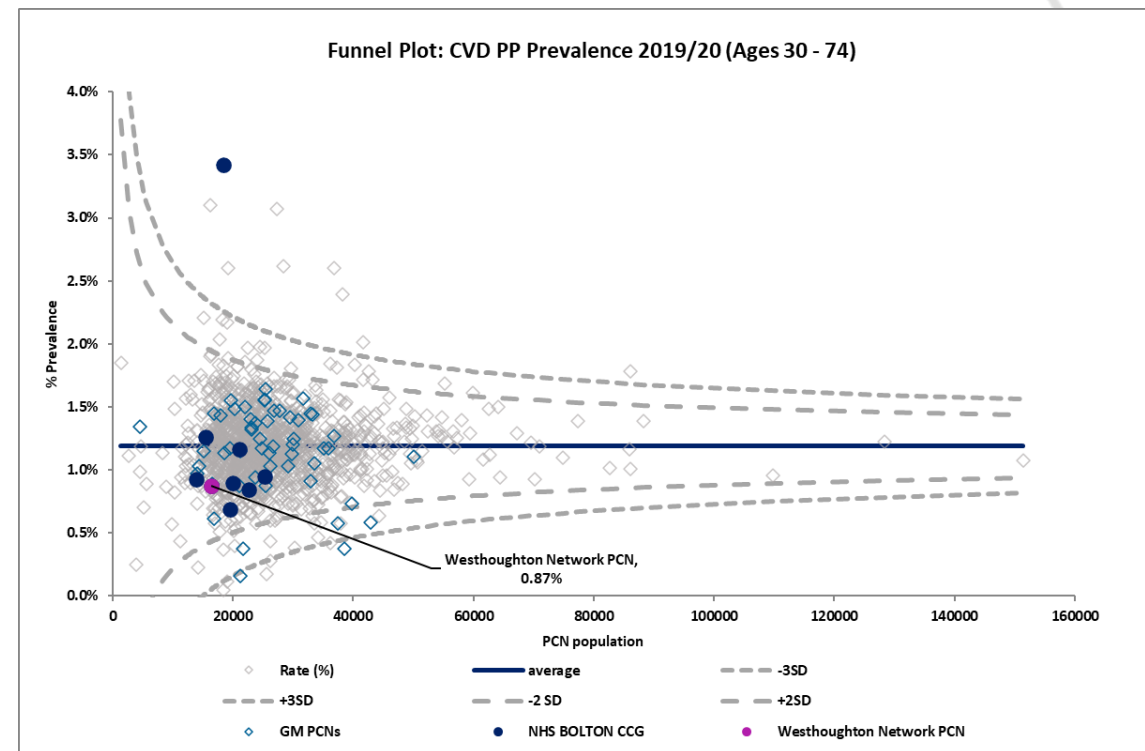
| Westhoughton Network PCN | Practice Prevalence CVD-PP |
|--------------------------|----------------------------|
| Stable Fold Surgery | 0.85% |
| Unsworth Group Practice | 0.88% |
| PCN Average | 0.87% |

| GM Average | England Average |
|------------|-----------------|
| 1.16% | 1.19% |

Westhoughton Network PCN's CVD-PP prevalence is lower than GM and national averages.

2019/20 data show that 100% of this cohort who had a recorded CVD risk assessment score of $\geq 20\%$ in the preceding 12 months were treated with statins.

Bolton Central, Horwich Network, Farnworth and Kearsley, and Westhoughton Network PCNs had the highest achievement rates across Bolton at 100%.



Information regarding PCN cardiovascular disease outcomes has been sought but not found, however district level data for 2017-19 suggest poorer outcomes across Bolton.

| Fingertips PHE (2017-19) Per 100,000 Population | England | Bolton |
|---|---------|--------|
| Under 75 Mortality from all Cardiovascular diseases | 70.4 | 99.7 |
| Under 75 Mortality from Cardiovascular Disease Considered Preventable | 28.2 | 39.4 |



Chronic Obstructive Pulmonary Disease (COPD)

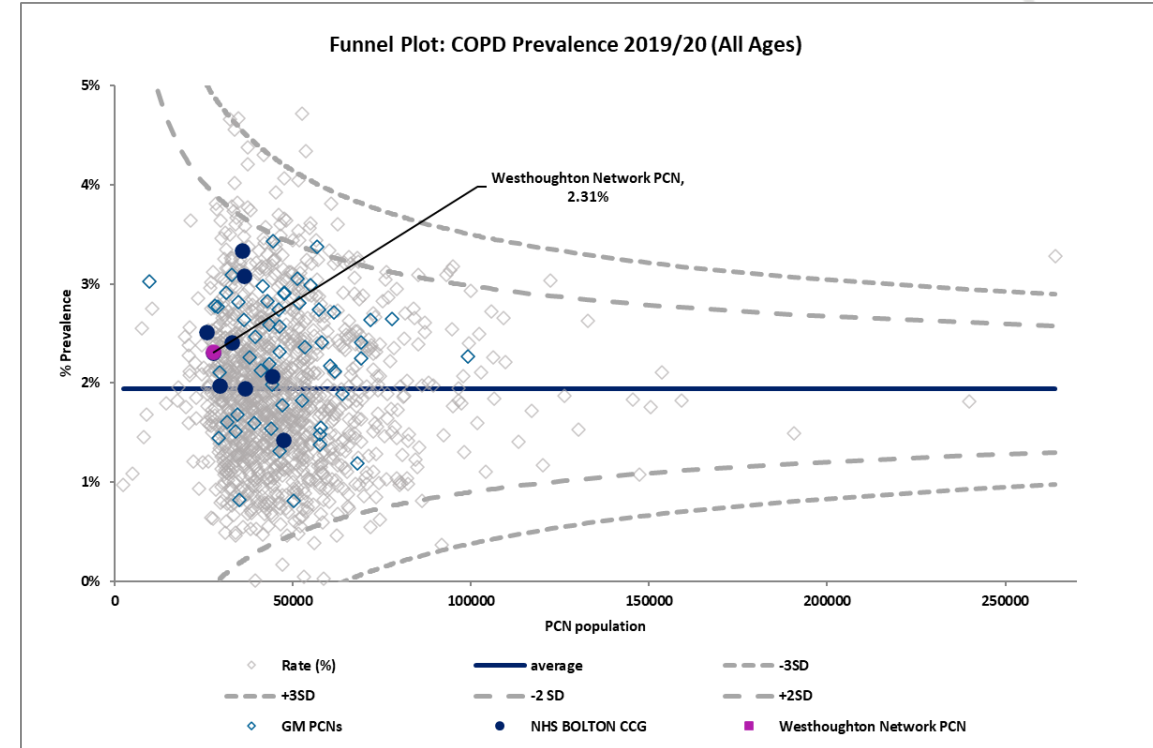
Data Source: Quality Outcomes Framework, 2019/20

| Westhoughton Network PCN COPD | Practice Prevalence |
|----------------------------------|---------------------|
| Stable Fold Surgery | 2.26% |
| Unsworth Group Practice | 2.32% |
| PCN Average | 2.31% |

| GM Average | England Average |
|------------|-----------------|
| 2.33% | 1.94% |

Westhoughton Network PCN's COPD prevalence is similar to the GM Average but higher than the national average.

2019/20 data show that 79.61% were in receipt of a COPD review in the preceding 12 months. Horwich Network PCN had the highest achievement rate across Bolton at 94.64%.



Information regarding PCN respiratory disease outcomes has been sought but not found, however district level data for 2017-19 suggest poorer outcomes across Bolton.

| Fingertips PHE (2017-19) Per 100,000 Population | England | Bolton |
|--|---------|--------|
| Under 75 Mortality from Respiratory Disease | 34.2 | 53.1 |
| Under 75 Mortality from Respiratory Disease Considered Preventable | 20.0 | 28.7 |



Dementia

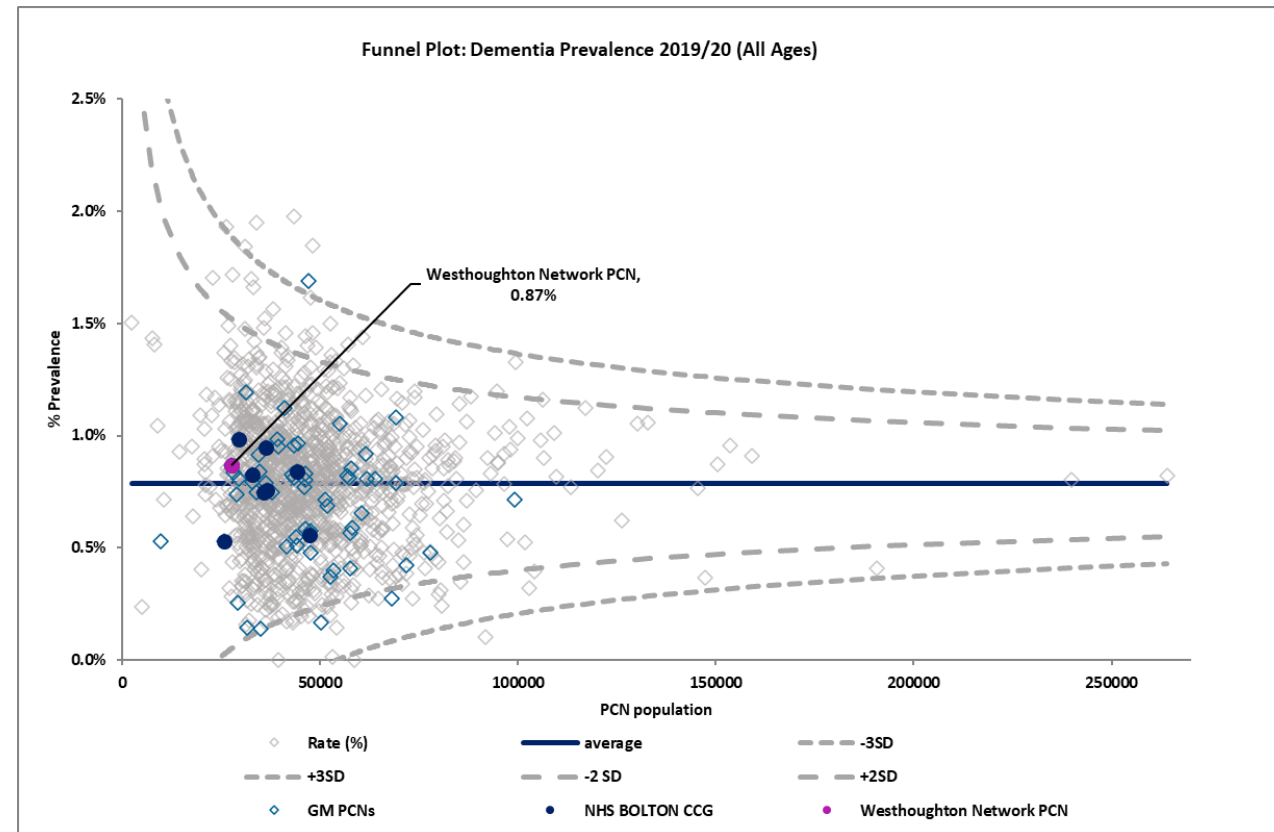
Data Source: Quality Outcomes Framework, 2019/20

| Westhoughton Network PCN Dementia | Practice Prevalence |
|--------------------------------------|---------------------|
| Stable Fold Surgery | 0.69% |
| Unsworth Group Practice | 0.93% |
| PCN Average | 0.87% |

| GM Average | England Average |
|------------|-----------------|
| 0.73% | 0.79% |

2019/20 data show that 73.66% had their care plan reviewed in a face-to-face meeting in the preceding 12 months.

Rumworth PCN had the highest achievement rate across Bolton at 94.18%.



Westhoughton Network PCN's dementia prevalence is broadly in keeping with the national rate, acknowledging variation at practice level.



Diabetes (17 years+)

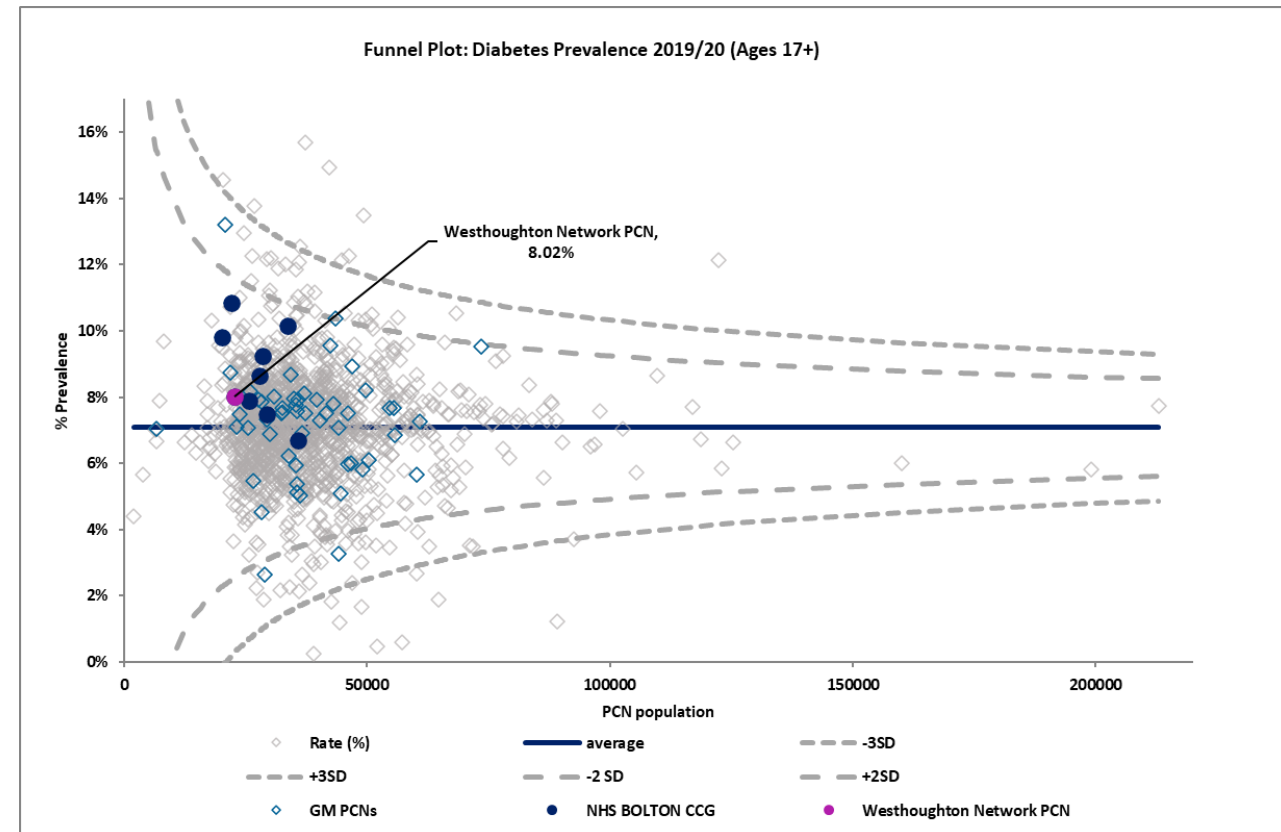
Data Source: Quality Outcomes Framework, 2019/20

| Westhoughton Network PCN Diabetes (17+) | Practice Prevalence |
|---|---------------------|
| Stable Fold Surgery | 7.14% |
| Unsworth Group Practice | 8.34% |
| PCN Average | 8.02% |

| GM Average | England Average |
|------------|-----------------|
| 7.42% | 7.08% |

2019/20 data show in the absence of moderate or severe frailty, that for 56.99% their last IFCC-HbA1c was 58 mmol/mol or less in the preceding 12 months. Horwich Network PCN had the highest achievement rate across Bolton at 70.44%.

72.78% were recorded as being in receipt of a foot examination and risk classification within the preceding 12 months. Horwich Network PCN had the highest achievement rate across Bolton at 90.86%.





Hypertension

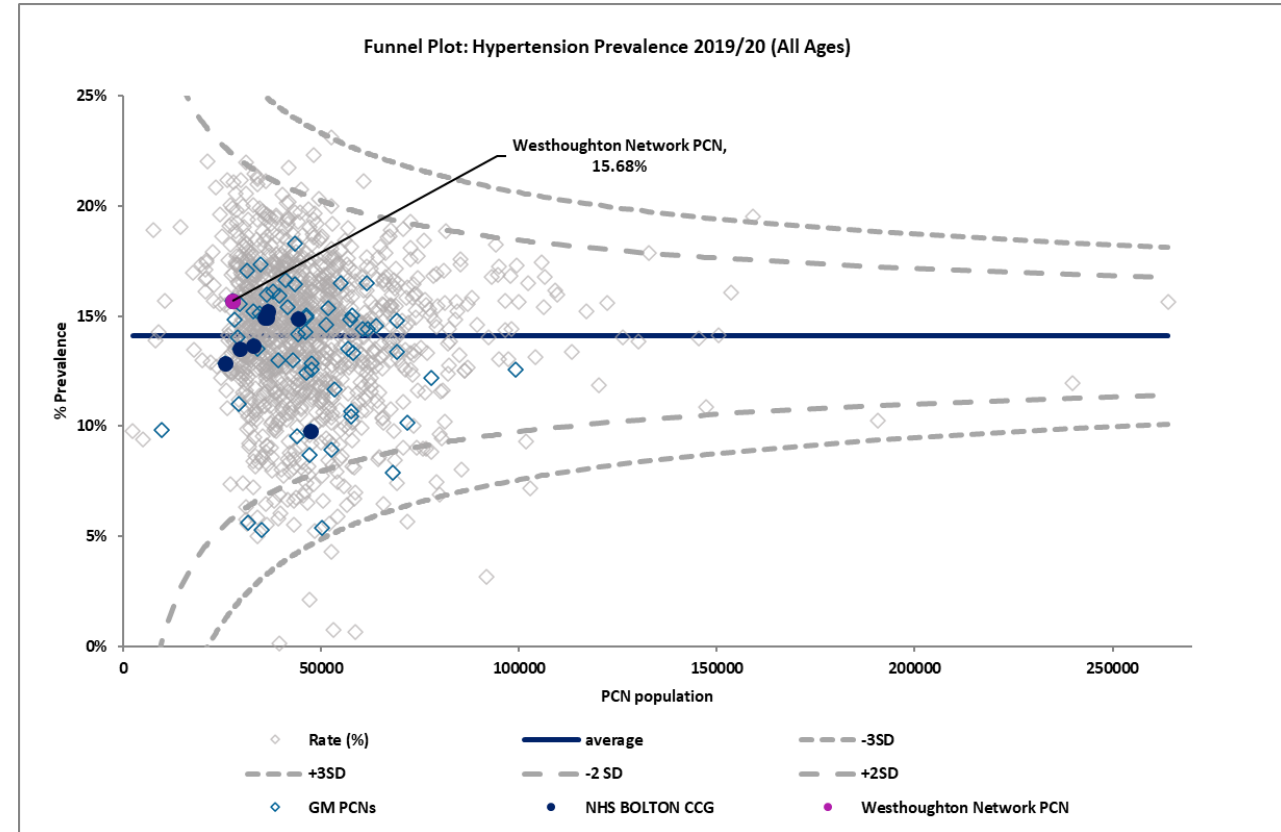
Data Source: Quality Outcomes Framework, 2019/20

| Westhoughton Network PCN Hypertension | Practice Prevalence |
|--|---------------------|
| Stable Fold Surgery | 14.36% |
| Unsworth Group Practice | 16.15% |
| PCN Average | 15.68% |

| GM Average | England Average |
|------------|-----------------|
| 13.53% | 14.09% |

2019/20 data show for those aged 79 years or under, that for 69.99% their last blood pressure recording was 140/90 mmHg or less in the preceding 12 months.

Bolton Central PCN had the highest achievement rate across Bolton at 77.71%.





Learning Disability

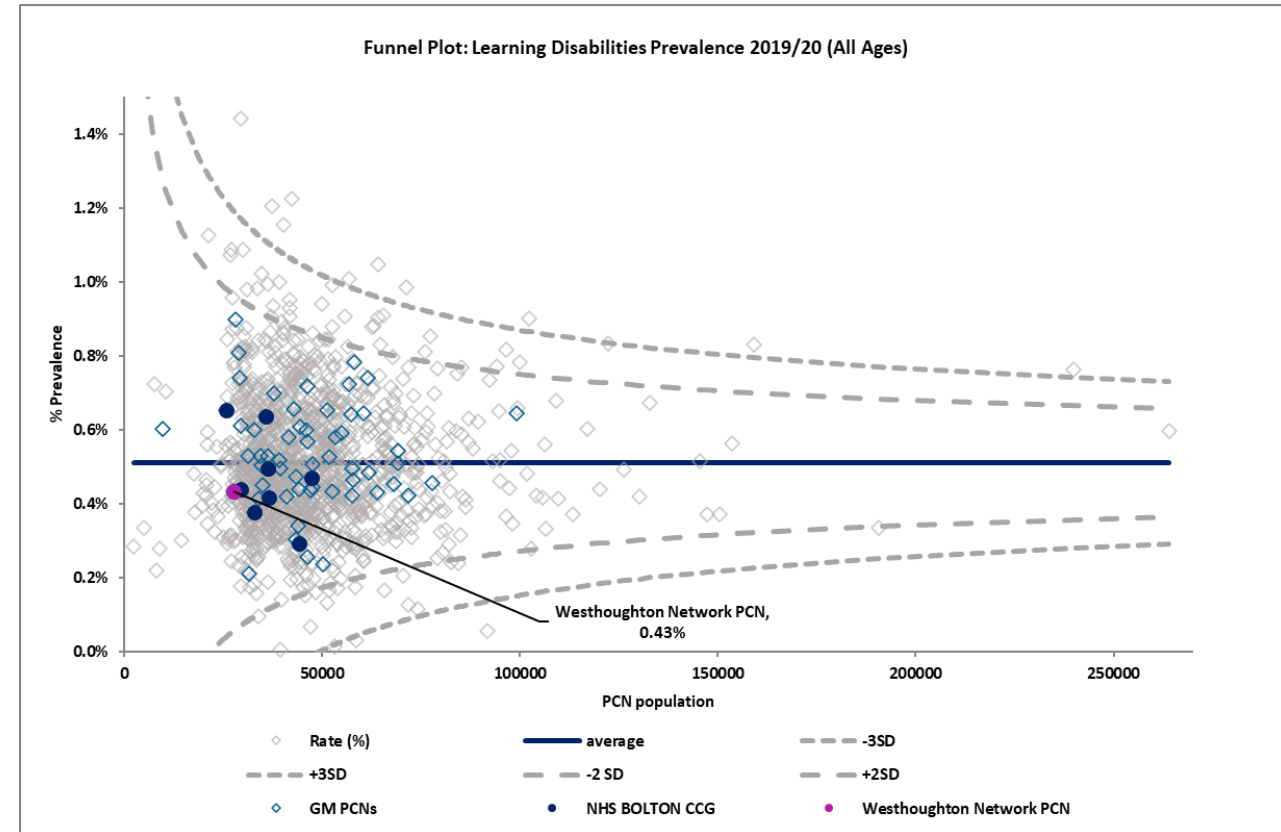
Data Source: Quality Outcomes Framework, 2019/20

| Westhoughton Network PCN Learning Disability | Practice Prevalence |
|--|---------------------|
| Stable Fold Surgery | 0.29% |
| Unsworth Group Practice | 0.48% |
| PCN Average | 0.43% |

| GM Average | England Average |
|------------|-----------------|
| 0.53% | 0.51% |

Annual health check data which has been located by CCG suggest whilst there has been a reduction in the percentage of health checks completed, achievement rates were above GM and national levels in both 2018/19 and 2019/20.

| Learning Disabilities Health Check Scheme, NHS Digital | 2018/19 | 2019/20 |
|--|---------|---------|
| Bolton CCG | 70.7% | 67.9% |
| GM | 52.5% | 55.9% |
| England | 51.3% | 51.9% |





Severe Mental Health

Data Source: Quality Outcomes Framework, 2019/20

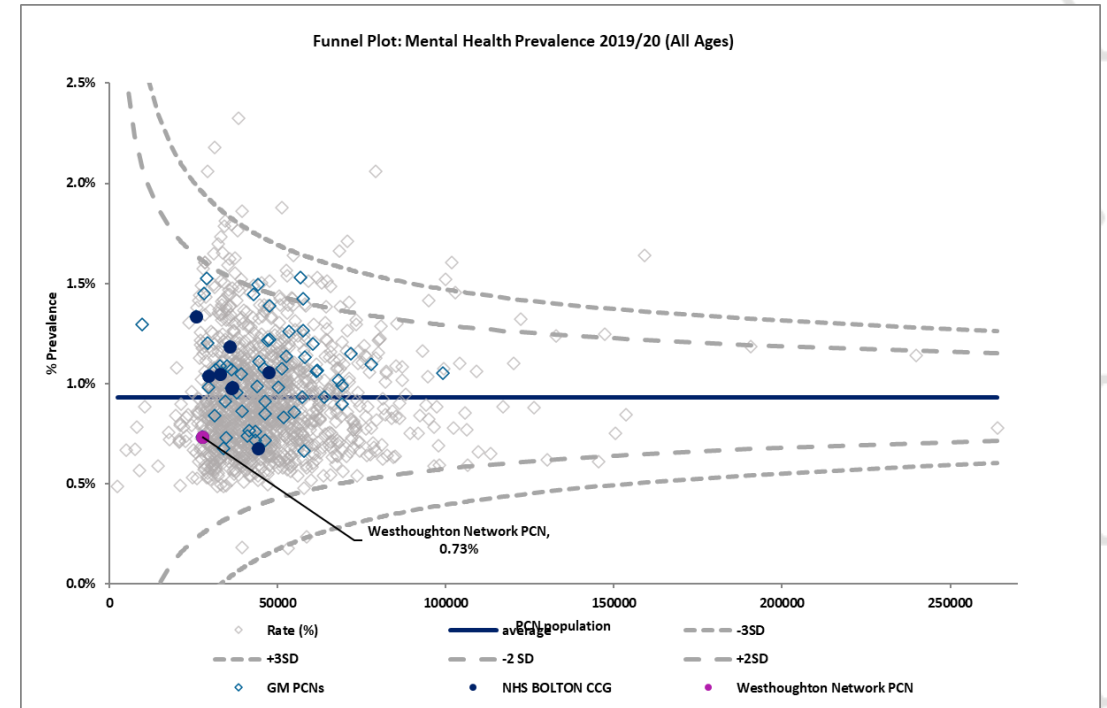
| Westhoughton Network PCN Severe Mental Health | Practice Prevalence |
|--|---------------------|
| Stable Fold Surgery | 0.87% |
| Unsworth Group Practice | 0.68% |
| PCN Average | 0.73% |

| GM Average | England Average |
|------------|-----------------|
| 1.03% | 0.93% |

Westhoughton Network PCN's severe mental health prevalence is below the national average.

2019/20 data show that 60.12% had a comprehensive care plan documented in their care record in the preceding 12 months.

Turton PCN had the highest achievement rate across Bolton at 94.50%.



Information regarding PCN Mental Health outcomes has been sought but not found, however district level data suggest a similar level of intentional self-harm across Bolton, when benchmarked against national figures.

| Fingertips PHE Per 100,000 Population | England | Bolton |
|--|---------|--------|
| Suicide Rate (2017/19) | 10.1 | 11.2 |
| Emergency Hospital Admissions for Intentional Self-Harm (2019/20) | 192.6 | 186.2 |



Visual Impairment

Data regarding the number of Westhoughton Network PCN adults who have a moderate or severe visual impairment has been sought but not found. Estimated numbers with projections to 2040 that are available on a Bolton footprint, suggest increasing prevalence attributed to ageing populations. Whilst some sight loss may be correctable, age related macular degeneration is the most common cause of registrable sight loss in older people.

| Bolton | 2020 | 2025 | 2030 | 2035 | 2040 |
|--|--------------|--------------|--------------|--------------|--------------|
| People aged 18-64 predicted to have a serious visual impairment | 109 | 109 | 109 | 109 | 109 |
| People aged 65-74 predicted to have a moderate or severe visual impairment | 1,546 | 1,490 | 1,652 | 1,792 | 1,747 |
| People aged 75 and over predicted to have a moderate or severe visual impairment | 2,802 | 3,311 | 3,472 | 3,683 | 4,042 |
| Total | 4,457 | 4,910 | 5,233 | 5,584 | 5,898 |



Hearing Loss



Utilisation Management Unit

Data regarding how many Westhoughton Network PCN adults have hearing loss has been sought but not found.

Estimated numbers with projections to 2040 available on a Bolton footprint suggest increasing prevalence attributed to an ageing population.

Hearing loss is a common but often unacknowledged long term condition that can have an adverse impact on a person's health and quality of life.

| Bolton Some Hearing Loss | 2020 | 2025 | 2030 | 2035 | 2040 |
|--|---------------|---------------|---------------|---------------|---------------|
| People aged 18-64 predicted to have some hearing loss | 16,492 | 17,002 | 16,782 | 16,343 | 16,181 |
| People aged 65-74 predicted to have some hearing loss | 12,827 | 12,084 | 13,270 | 14,534 | 14,392 |
| People aged 75 -84 predicted to have some hearing loss | 11,823 | 14,041 | 14,793 | 14,372 | 16,125 |
| People aged 85+ predicted to have some hearing loss | 5,466 | 6,161 | 7,202 | 8,933 | 9,220 |
| Total | 46,608 | 49,288 | 52,047 | 54,182 | 55,918 |
| Figures may not sum due to rounding | | | | | |

| Bolton Severe Hearing Loss | 2020 | 2025 | 2030 | 2035 | 2040 |
|--|--------------|--------------|--------------|--------------|--------------|
| People aged 18-64 predicted to have severe hearing loss | 997 | 1,038 | 1,020 | 976 | 964 |
| People aged 65-74 predicted to have severe hearing loss | 828 | 778 | 853 | 936 | 928 |
| People aged 75 -84 predicted to have severe hearing loss | 1,626 | 1,890 | 2,203 | 2,022 | 2,230 |
| People aged 85+ predicted to have severe hearing loss | 1,305 | 1,471 | 1,720 | 2,133 | 2,201 |
| Total | 4,756 | 5,177 | 5,796 | 6,067 | 6,323 |
| Figures may not sum due to rounding | | | | | |



07

Disease Prevention





7.1 Life Style



Physical Activity

Information regarding physical activity was only locatable at a district level.

| Fingertips PHE (2018/19) | England | Bolton |
|---|---------|--------|
| Percentage of Physically Active Children and Young People | 46.8% | 46.0% |
| Percentage of Physically Active Adults | 67.2% | 61.6% |

For the period 2018/19, data suggest when benchmarked against national figures, a higher proportion of physically inactive adults in Bolton.

The percentage of physically active children and young people is in line with the national average.





Obesity (18 years+)

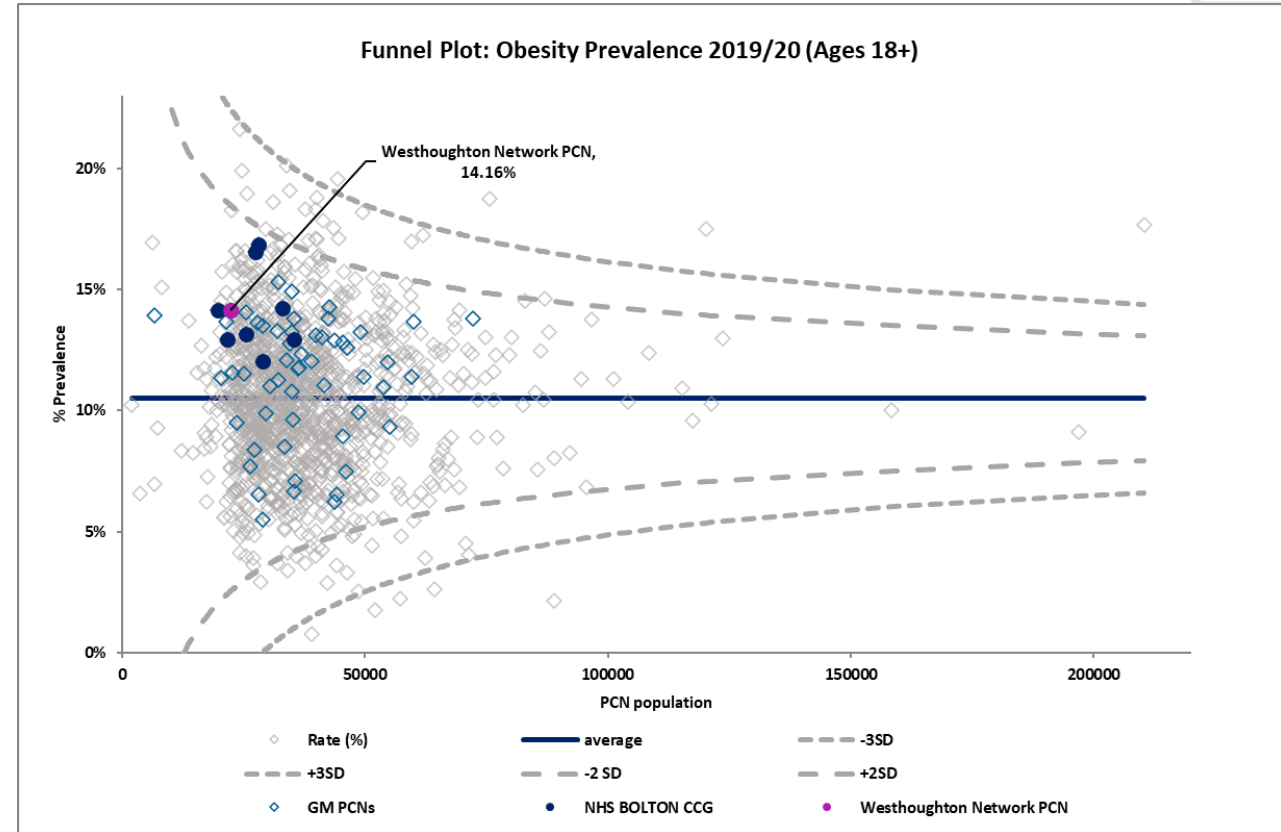
Data Source: Quality Outcomes Framework, 2019/20

| Westhoughton Network PCN | Practice Prevalence |
|--------------------------|---------------------|
| Obesity (18+) | |
| Stable Fold Surgery | 16.08% |
| Unsworth Group Practice | 13.48% |
| PCN Average | 14.16% |

| GM Average | England Average |
|------------|-----------------|
| 11.58% | 10.51% |

Data regarding childhood obesity has only been locatable at a district level;

| Fingertips PHE | England | Bolton |
|--|---------|--------|
| Year 6: Prevalence of Overweight including Obesity (2019/20) | 35.2% | 36.1% |



Similar to all PCNs within Bolton CCG, Westhoughton Network PCN's obesity prevalence is higher than the national average.



Smoking (15 years+)

Data Source: Quality Outcomes Framework, 2019/20

| Westhoughton Network PCN Smoking (15+) | Practice Prevalence |
|---|---------------------|
| Stable Fold Surgery | 14.84% |
| Unsworth Group Practice | 13.60% |
| PCN Average | 13.93% |

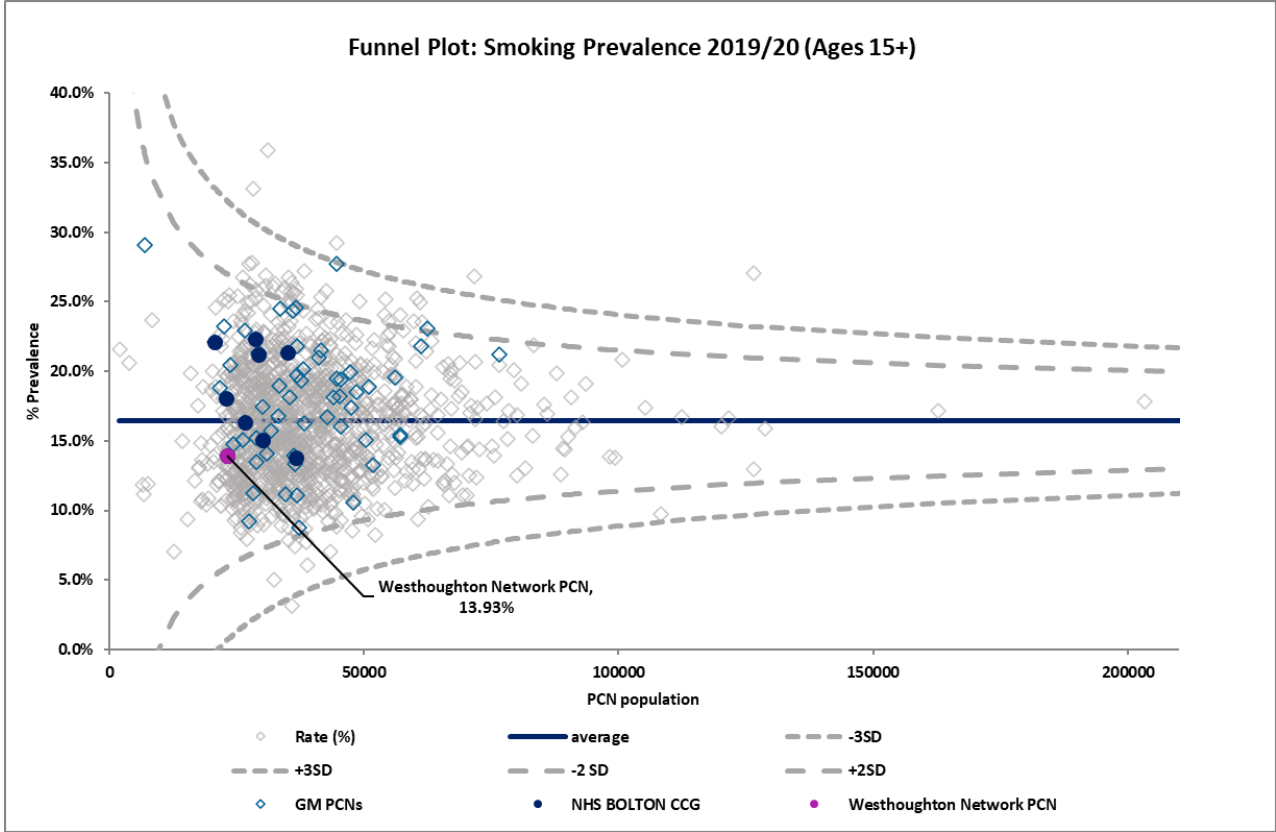
| GM Average | England Average |
|------------|-----------------|
| 18.16% | 16.47% |

2019/20 data show that 87.90% had a record of an offer of support and treatment within the preceding 24 months.

Brightmet and Little Lever PCN had the highest achievement rate across Bolton at 92.96%.

Data regarding smoking in pregnancy has only been locatable at a district level;

| Fingertips PHE | England | Bolton |
|--|---------|--------|
| Smoking Status at Time of Delivery (2019/20) | 10.4% | 12.4% |



Similar to Horwich Network PCN and Turton PCN, Westhoughton Network PCN's smoking prevalence is lower than GM and national rates.

Data regarding the prevalence of e-cigarette use have been sought but not found.



Tooth Decay in 3 Year Olds

Mean severity of tooth decay in children aged three years based on the mean number of teeth per child sampled which were either actively decayed or had been filled or extracted.

| | 2012/13 | 2019/20 |
|---------|---------|---------------|
| Bolton | 0.76 | Not available |
| NW | 0.47 | 0.42 |
| England | 0.36 | 0.31 |

Chlamydia Detection Rates

All chlamydia diagnoses in 15 to 24 year olds attending specialist and non-specialist sexual health services, who are residents in England, expressed as a rate per 100,000 population.

| | 2015 | 2016 | 2017 | 2018 | 2019 | 2020 |
|---------|------|------|------|------|------|------|
| Bolton | 1933 | 2054 | 1714 | 2063 | 1305 | 601 |
| NW | 2361 | 2277 | 2168 | 2176 | 1990 | 1249 |
| England | 1914 | 1917 | 1929 | 1999 | 2043 | 1420 |

Accidental Poisoning in 0-4 Year Olds

Emergency hospital admissions per 100,000 resident population due to accidental poisoning in children aged 0-4 years.

| | 2014/15-16/17 | 2015/16-17/18 | 2016/17-18/19 | 2017/18-19/20 |
|---------|---------------|---------------|---------------|---------------|
| Bolton | 230.6 | 205.1 | 171.5 | 129.5 |
| NW | 217.5 | 204.8 | 196.6 | 180.3 |
| England | 145.5 | 136.1 | 126.6 | 118.2 |

Teenage Mothers

Percentage of delivery episodes, where the mother is aged under 18 years.

| | 2016/17 | 2017/18 | 2018/19 | 2019/20 |
|---------|---------|---------|---------|---------|
| Bolton | 0.7% | 0.6% | 0.9% | 0.8% |
| NW | 0.9% | 0.9% | 0.8% | 0.8% |
| England | 0.8% | 0.7% | 0.6% | 0.7% |



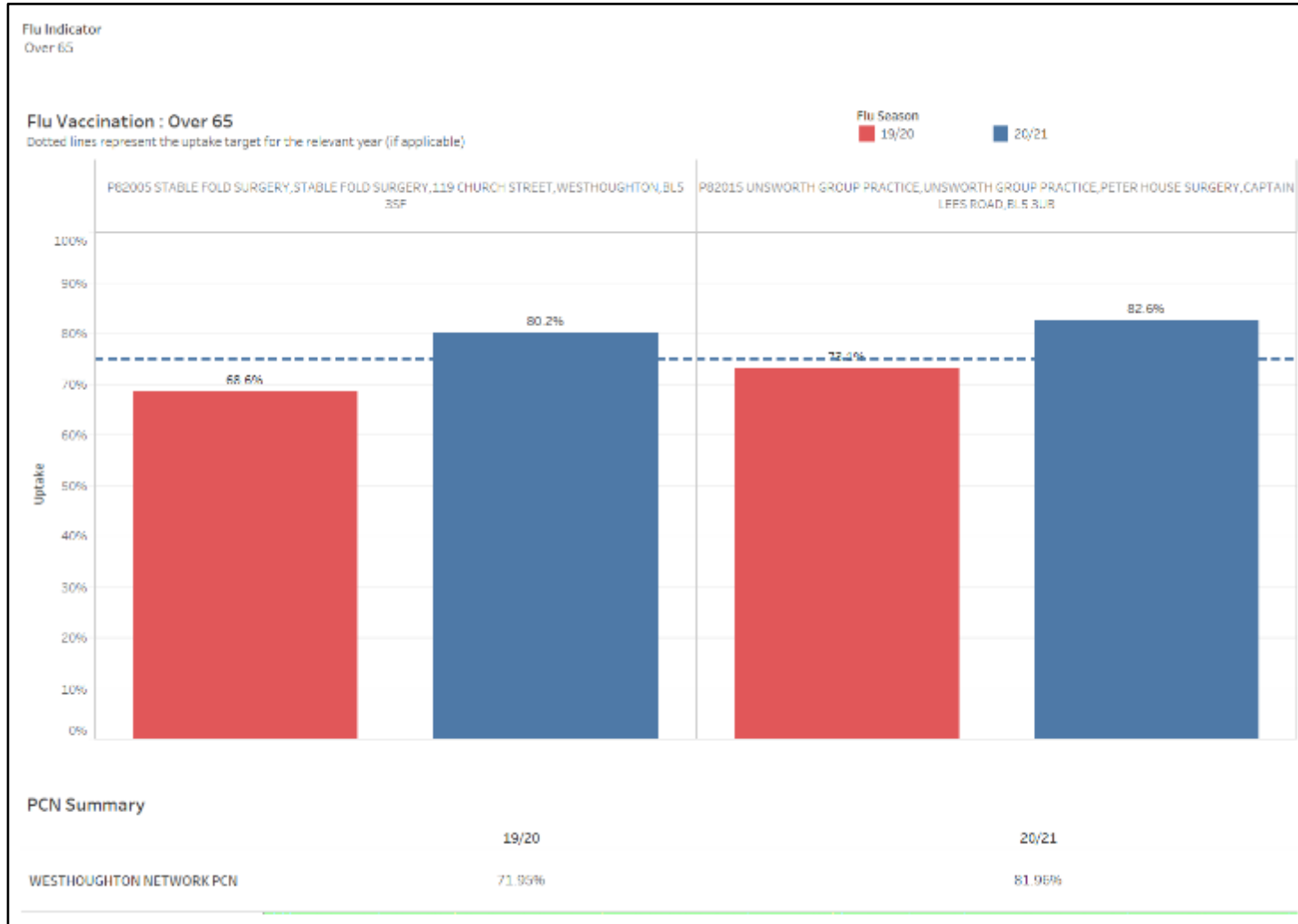
7.2 Immunisation





Flu Vaccination: 65 & Over

Data Source: GM HSCP



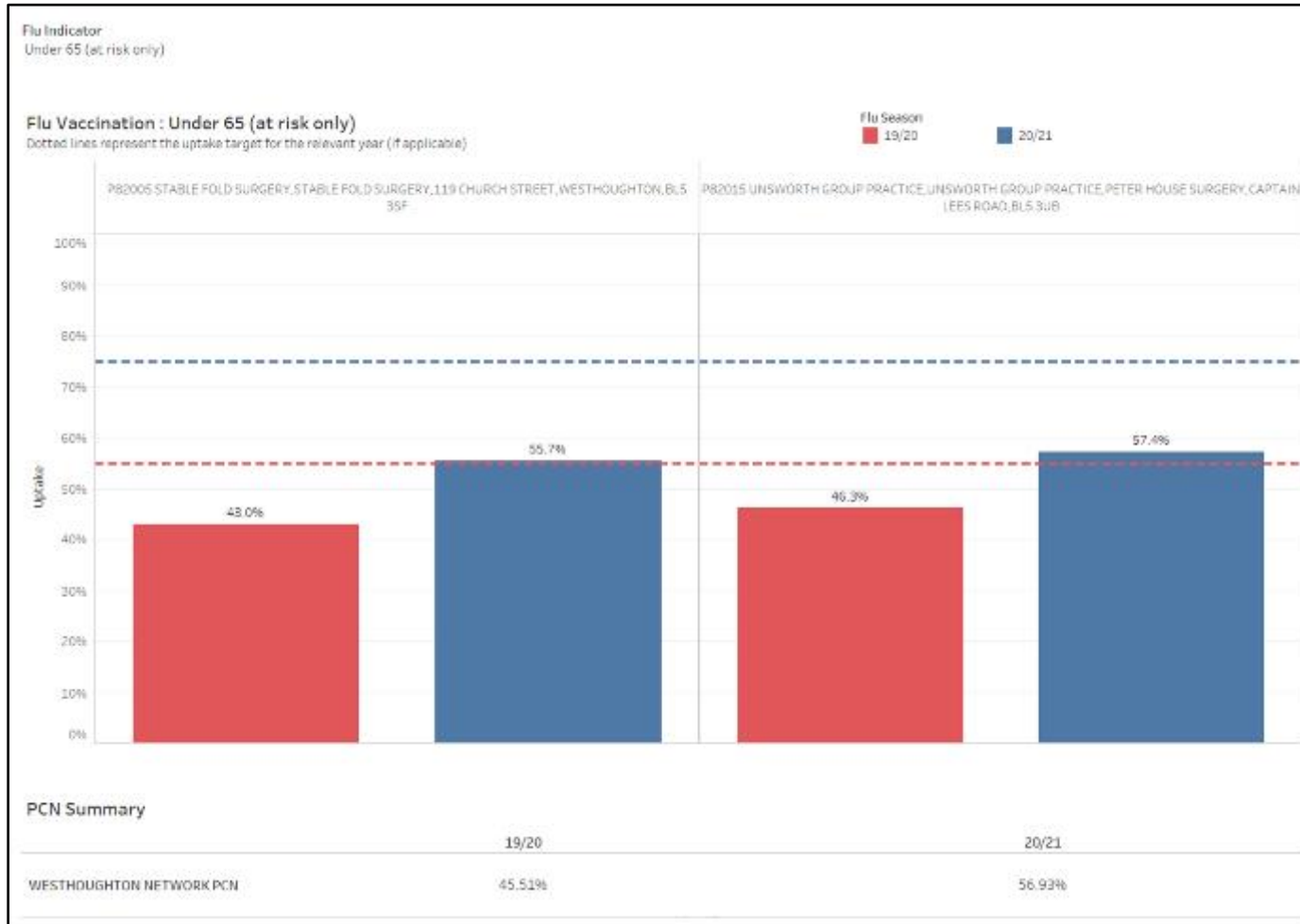
2019/20 Flu Season: Westhoughton Network PCN 65 & over vaccination uptake was 71.95%.

2020/21 Flu Season: Both of the Westhoughton Network PCN practices had exceeded the target. Overall PCN uptake was 81.95%.



Flu Vaccination: Under 65 (at risk only)

Data Source: GM HSCP



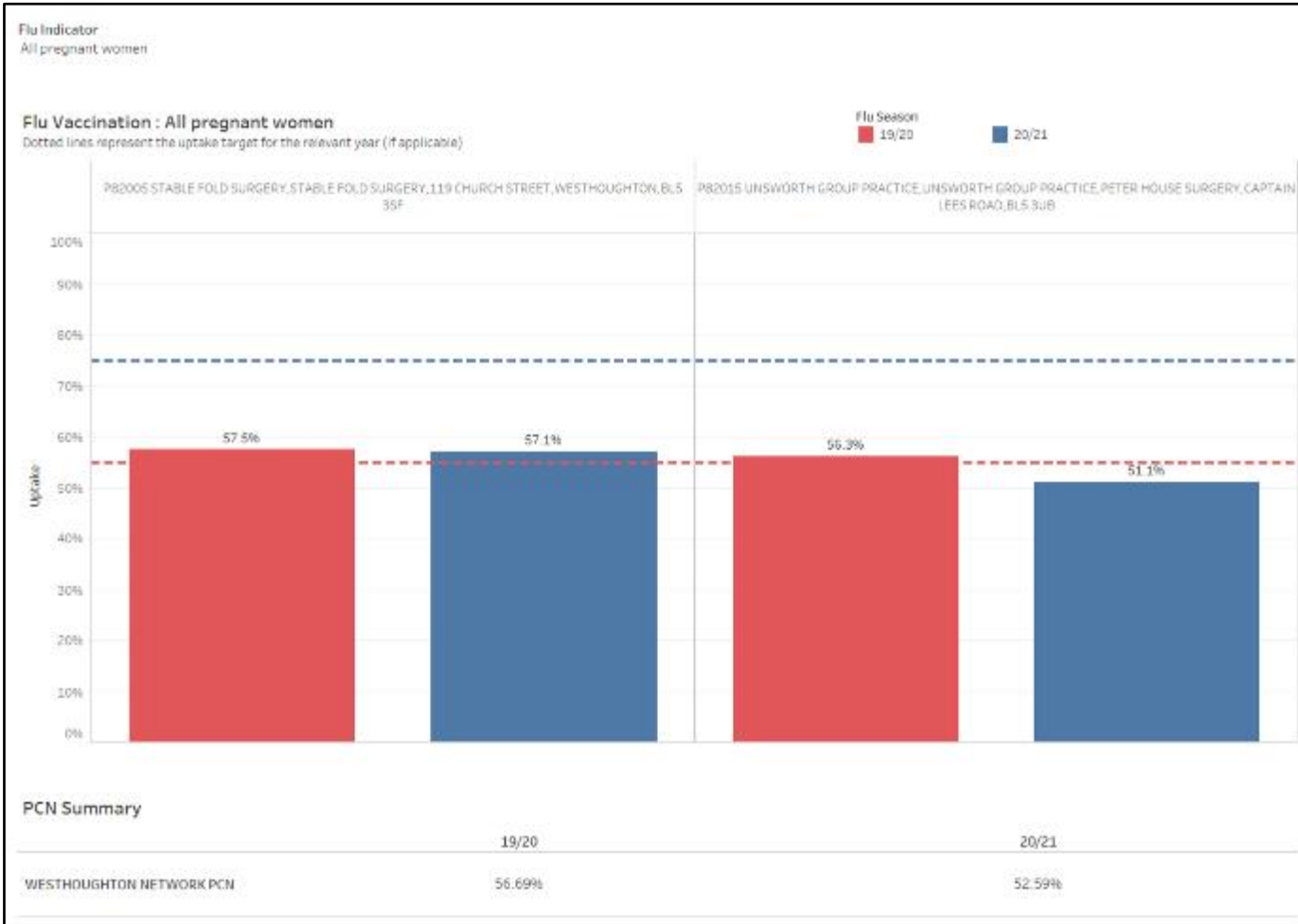
2019/20 Flu Season: Westhoughton Network PCN under 65 at risk only vaccination uptake was 45.51%.

2020/21 Flu Season: Both Westhoughton Network PCN practices had increased vaccination uptake from that of the previous year however were below the revised target.



Flu Vaccination: All Pregnant Women

Data Source: GM HSCP



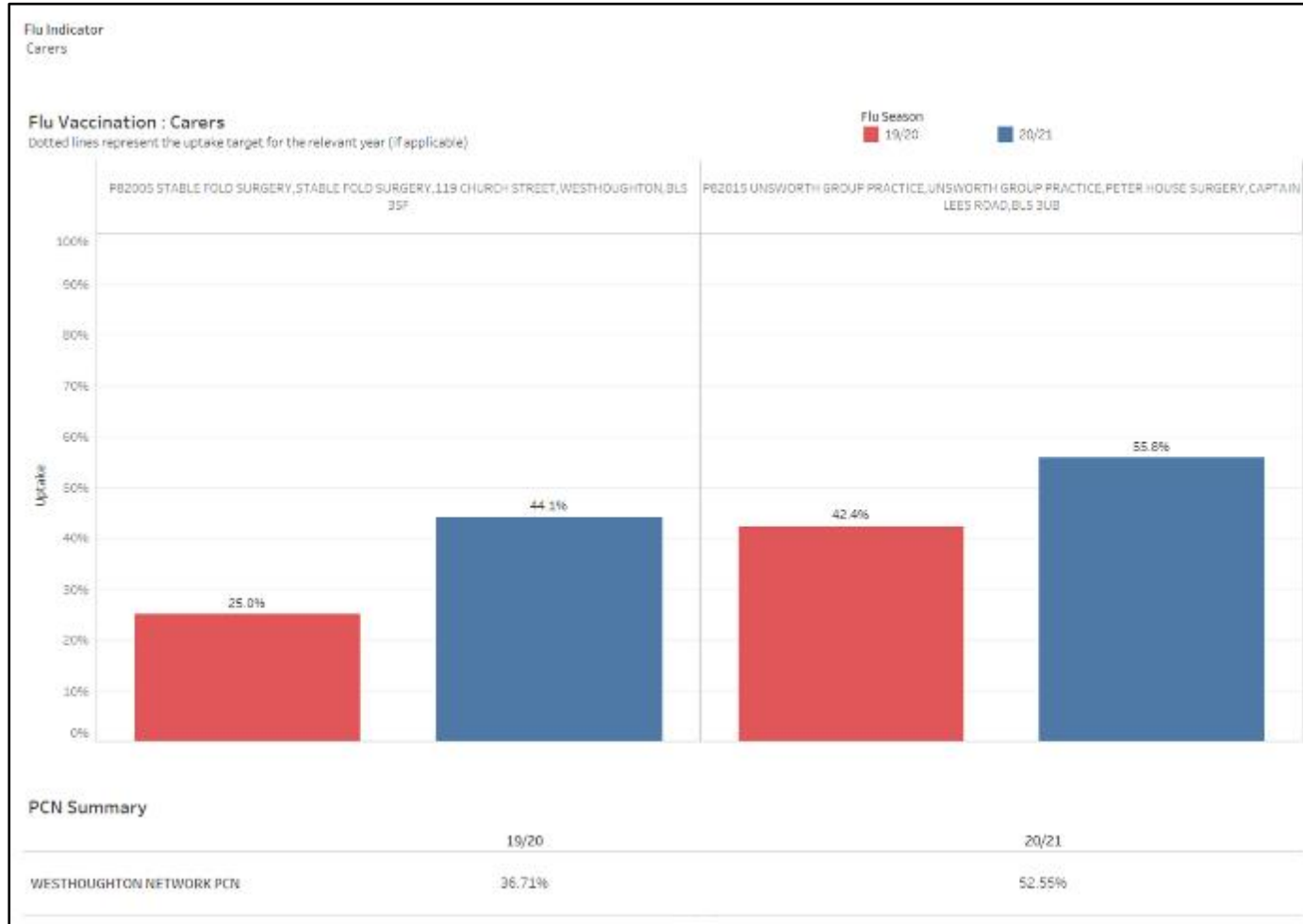
2019/20 Flu Season: Westhoughton Network PCN all pregnant women vaccination uptake was 56.69%, above the 55% target for that year.

2020/21 Flu Season: Uptake was lower across the PCN with neither practice reaching the revised target of 75%.



Flu Vaccination: Carers

Data Source: GM HSCP



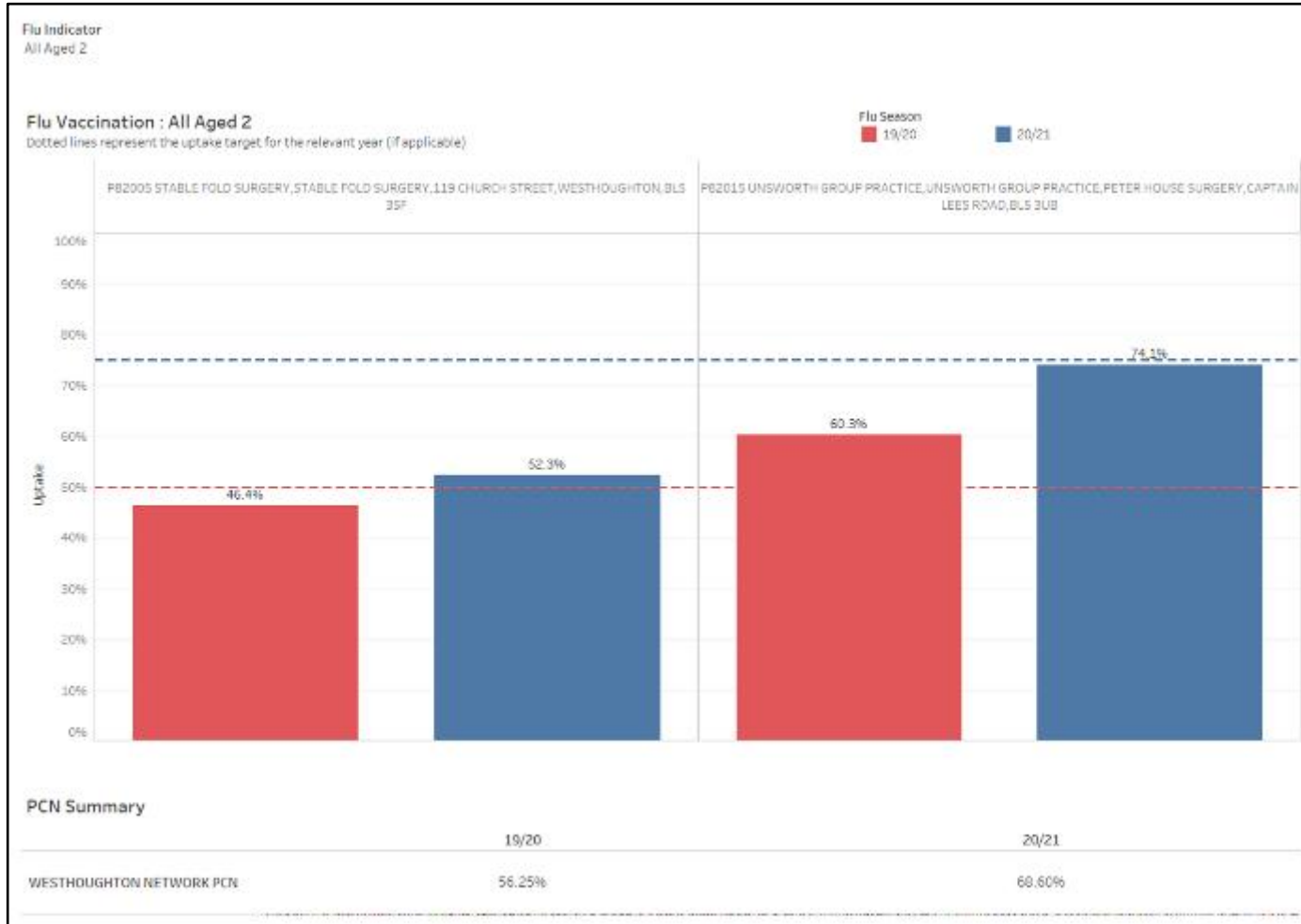
2019/20 Flu Season: Westhoughton Network PCN carer vaccination uptake was 36.71%.

2020/21 Flu Season: Uptake increased at both practices in the PCN, leading to an overall uptake rate for the PCN of 52.55%.



Flu Vaccination: All Aged 2

Data Source: GM HSCP



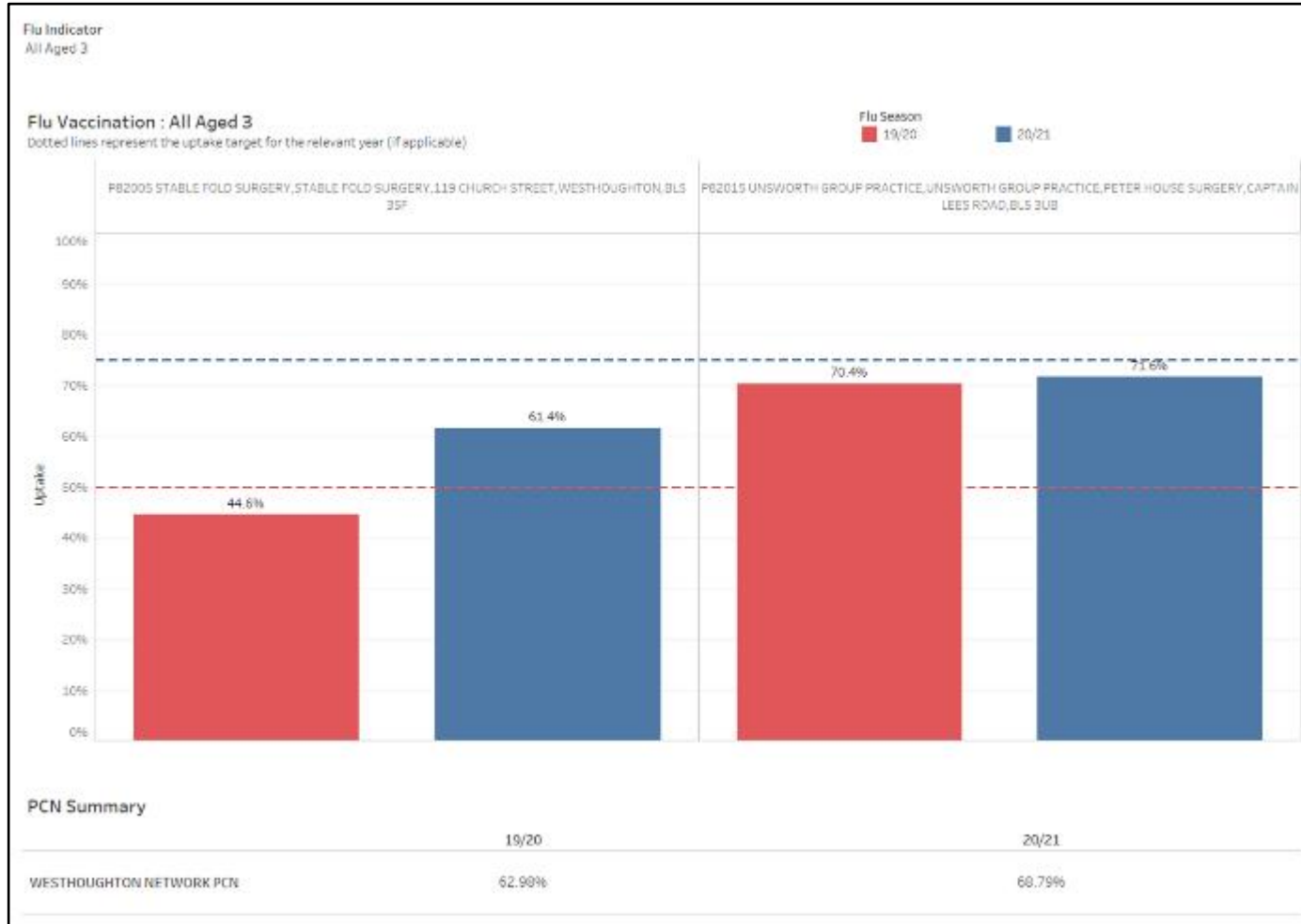
2019/20 Flu Season: Westhoughton Network PCN all aged 2 vaccination uptake was 56.25%. Unsworth Group Practice exceeded the target while Stable Fold Surgery was just below it.

2020/21 Flu Season: There was an increase in uptake at both practices in the PCN. Neither practice reached the revised target however Unsworth Group Practice was only slightly below it.



Flu Vaccination: All Aged 3

Data Source: GM HSCP



2019/20 Flu Season: Westhoughton Network PCN all aged 3 vaccination uptake was 62.98%. Unsworth Group Practice exceeded the target of 50%.

2020/21 Flu Season: Uptake increased at both practices in the PCN although neither reached the revised target of 75%. PCN uptake increased to 68.79%



Child Immunisations Up to Five Years of Age (GP)

Data Source: Child Health Information Systems, Public Health England, 2019/20

Expectation in the UK is that there is 95% coverage of all routine childhood immunisations for those up to five years of age (BMA, 2020).

6-in-1 Vaccine
3 doses at 8,12 & 16 weeks

Data Measure
% of children who received 3 doses of the 6-in-1 vaccine by their 1st birthday.

| 6-in-1 Vaccine | % Vaccinated |
|--------------------------|--------------|
| Westhoughton Network | 98.00% |
| Horwich Network | 96.88% |
| Turton | 96.59% |
| Brightmet & Little Lever | 95.81% |
| HWL Network | 95.08% |
| Chorley Roads Network | 94.18% |
| Farnworth & Kearsley | 93.81% |
| Rumworth | 92.86% |
| Bolton Central | 90.39% |
| GM Average | 93.47% |
| England Average | 92.57% |

Hib/ MenC Booster
1 dose at 1 year

Data Measure
% of children who received 1 dose of the Hib/ MenC booster (or 1 dose of the 6-in-1 vaccine and 1 dose of MenC) on or after their 1st birthday, up to their 2nd birthday.

| Hib/MenC | % Vaccinated |
|--------------------------|--------------|
| Westhoughton Network | 96.76% |
| Turton | 96.43% |
| Farnworth & Kearsley | 94.44% |
| Chorley Roads Network | 93.99% |
| HWL Network | 93.94% |
| Brightmet & Little Lever | 93.60% |
| Horwich Network | 92.94% |
| Rumworth | 91.33% |
| Bolton Central | 90.46% |
| GM Average | 91.03% |
| England Average | 90.56% |

4-in-1 Preschool Booster Vaccine
1 dose from 3 years & 4 months

Data Measure
% of children who received a 4th dose of a diphtheria, tetanus, pertussis & polio containing vaccine given from 3 years & 4 months and before their 5th birthday.

| 4-in-1 Vaccine | % Vaccinated |
|--------------------------|--------------|
| Westhoughton Network | 95.10% |
| Turton | 92.16% |
| Brightmet & Little Lever | 90.65% |
| Chorley Roads Network | 89.23% |
| HWL Network | 88.61% |
| Horwich Network | 88.43% |
| Rumworth | 87.80% |
| Farnworth & Kearsley | 86.57% |
| Bolton Central | 81.27% |
| GM Average | 58.00%* |
| England Average | 84.00% |

* Bury, Oldham, HMR and Trafford CCGs reported very low vaccination numbers



Child Immunisations Up to 5 Years of Age (GP)

Utilisation Management Unit

Data Source: Child Health Information Systems, Public Health England, 2019/20

Expectation in the UK is that there is 95% coverage of all routine childhood immunisations for those up to five years of age (BMA, 2020).

Pneumococcal (PCV) Vaccine
 For babies born before 1st January 2020: 2 doses at 8 & 16 weeks
 For babies born after 1st January 2020: 1 dose at 12 weeks

Pneumococcal (PCV) Booster Vaccine
 1 dose at 1 year

Data Measure
 % of children who received 2 doses of the Pneumococcal vaccine before their 1st birthday.

Data Measure
 % of children who received 1 dose of the Pneumococcal booster on or after their 1st birthday, up to their 2nd birthday.

| PCV Vaccine | % Vaccinated |
|--------------------------|--------------|
| Westhoughton Network | 98.00% |
| Turton | 97.50% |
| Horwich Network | 97.40% |
| HWL Network | 96.39% |
| Brightmet & Little Lever | 96.31% |
| Chorley Roads Network | 95.24% |
| Farnworth & Kearsley | 94.76% |
| Rumworth | 93.41% |
| Bolton Central | 92.58% |
| GM Average | 94.95% |
| England Average | 93.34% |

| PCV Booster | % Vaccinated |
|--------------------------|--------------|
| Westhoughton Network | 96.76% |
| Turton | 96.01% |
| Farnworth & Kearsley | 94.44% |
| HWL Network | 93.60% |
| Chorley Roads Network | 93.21% |
| Brightmet & Little Lever | 93.13% |
| Horwich Network | 92.65% |
| Rumworth | 91.07% |
| Bolton Central | 87.90% |
| GM Average | 94.95% |
| England Average | 93.34% |



Child Immunisations Up to Five Years of Age (GP)

Utilisation Management Unit

Data Source: Child Health Information Systems, Public Health England, 2019/20

Expectation in the UK is that there is 95% coverage of all routine childhood immunisations for those up to five years of age (BMA, 2020).

Rotavirus Vaccine
2 doses at 8 & 12 weeks

MenB Vaccine
3 doses at 8 & 16 weeks and 1 year

Data Measure
% of children who received 2 doses of the Rotavirus vaccine before 24 weeks of age.

Data Measure
% of children who received 2 doses of the MenB vaccine by their 1st birthday.

| Rotavirus | % Vaccinated |
|--------------------------|--------------|
| Turton | 95.68% |
| Westhoughton Network | 95.20% |
| Farnworth & Kearsley | 92.62% |
| Brightmet & Little Lever | 92.61% |
| Horwich Network | 92.45% |
| Rumworth | 89.84% |
| Chorley Roads Network | 89.42% |
| HWL Network | 87.21% |
| Bolton Central | 82.53% |
| GM Average | 90.86% |
| England Average | 90.25% |

| MenB Vaccine | % Vaccinated |
|--------------------------|--------------|
| Westhoughton Network | 98.00% |
| Turton | 97.27% |
| Brightmet & Little Lever | 96.06% |
| Horwich Network | 95.83% |
| HWL Network | 95.74% |
| Farnworth & Kearsley | 94.29% |
| Chorley Roads Network | 94.18% |
| Rumworth | 92.86% |
| Bolton Central | 90.54% |
| GM Average | 94.28% |
| England Average | 92.58% |



Child Immunisations Up to Five Years of Age (GP)

Utilisation Management Unit

Data Source: Child Health Information Systems, Public Health England, 2019/20

Expectation in the UK is that there is 95% coverage of all routine childhood immunisations for those up to five years of age (BMA, 2020).

MMR Vaccine
1st dose at 1 year

MMR Vaccine
2nd dose at 3 years & 4 months

Data Measure
% of children who received 1 dose of the MMR vaccine on or after their 1st birthday up to their 2nd birthday.

Data Measure
% of children who received 2 doses of the MMR vaccine by their 5th birthday (where the 1st dose was given on or after their 1st birthday).

| MMR 1 st dose | % Vaccinated |
|--------------------------|--------------|
| Westhoughton Network | 97.48% |
| Turton | 96.43% |
| Chorley Roads Network | 95.82% |
| Brightmet & Little Lever | 94.08% |
| Farnworth & Kearsley | 93.98% |
| Horwich Network | 93.82% |
| HWL Network | 93.27% |
| Bolton Central | 92.20% |
| Rumworth | 91.33% |
| GM Average | 92.45% |
| England Average | 90.68% |

| MMR 1 st & 2 nd dose | % Vaccinated |
|--|--------------|
| Westhoughton Network | 96.50% |
| Turton | 94.23% |
| Chorley Roads Network | 92.11% |
| Brightmet & Little Lever | 91.76% |
| Rumworth | 91.72% |
| HWL Network | 90.19% |
| Horwich Network | 90.05% |
| Farnworth & Kearsley | 87.60% |
| Bolton Central | 84.75% |
| GM Average | 88.82% |
| England Average | 86.93% |



7.3 Cancer Screening



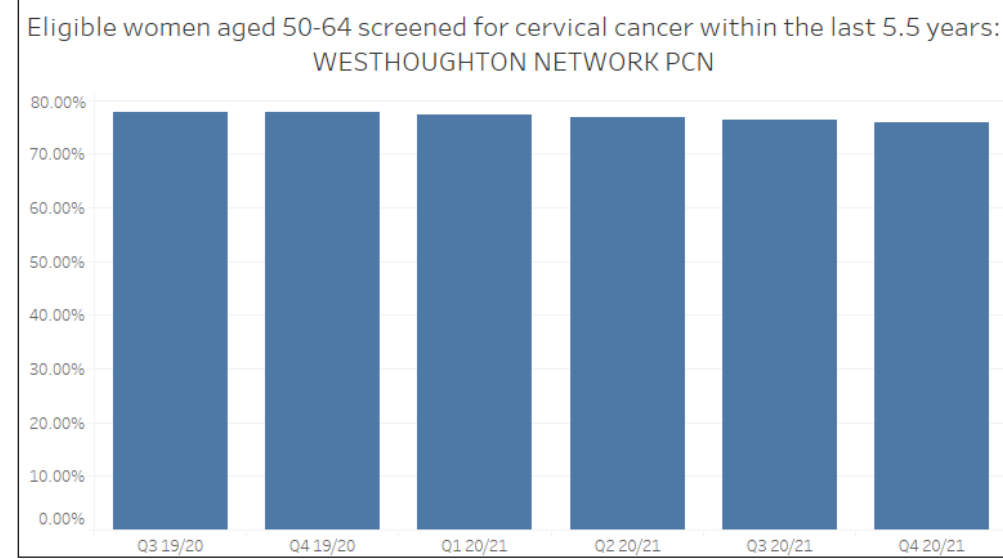
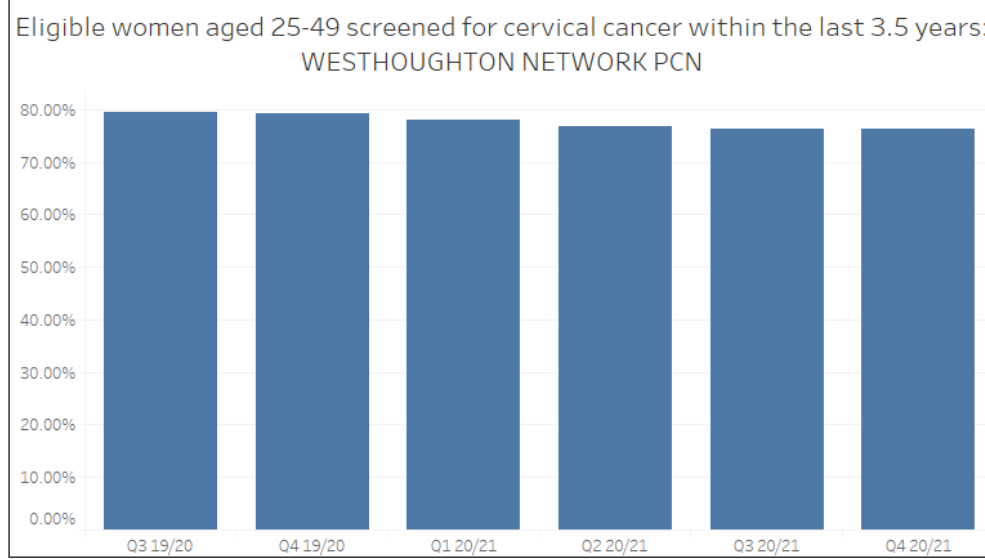
Cervical Cancer Screening

Data Source: Public Health England, Q3 2019/20 to Q1 2020/21



Acceptable threshold i.e. lowest level of performance screening services are expected to attain = 80% (PHE, 2020)

Utilisation Management Unit



| | Q3 19/20 | Q4 19/20 | Q1 20/21 | Q2 20/21 | Q3 20/21 | Q4 20/21 |
|--------------------------|----------|----------|----------|----------|----------|----------|
| WESTHOUGHTON NETWORK PCN | 79.45% | 79.15% | 78.01% | 76.83% | 76.41% | 76.25% |
| NHS BOLTON CCG | 71.12% | 71.62% | 70.00% | 68.71% | 68.57% | 69.61% |
| GM | 71.13% | 71.39% | 69.74% | 68.41% | 67.97% | 68.81% |
| England | 70.64% | 70.90% | 69.34% | 68.29% | 68.09% | 68.88% |

| | Q3 19/20 | Q4 19/20 | Q1 20/21 | Q2 20/21 | Q3 20/21 | Q4 20/21 |
|--------------------------|----------|----------|----------|----------|----------|----------|
| WESTHOUGHTON NETWORK PCN | 77.74% | 77.74% | 77.33% | 76.87% | 76.41% | 75.91% |
| NHS BOLTON CCG | 77.01% | 76.93% | 76.38% | 75.86% | 75.17% | 75.17% |
| GM | 76.01% | 76.01% | 75.40% | 74.70% | 74.26% | 74.22% |
| England | 76.37% | 76.33% | 75.80% | 75.28% | 74.99% | 74.96% |



Breast and Bowel Cancer Screening



Breast

Data were only locatable by Local Authority

NHS Breast Screening Programme: Coverage of women aged 53 - <71 by Local Authority, as at 31st March sourced from NHS Digital

PHE (2020);

Acceptable (lowest) threshold = 70%

Achievable (aspire to) threshold = 80%

| | 2019 | 2020 |
|----------------|--------|--------|
| Bolton | 73.22% | 74.68% |
| GM | 71.51% | 70.17% |
| England | 74.58% | 74.17% |



Bowel

Data were only locatable by CCG

The proportion of men and women aged 60 to 74 invited to participate in bowel cancer screening who adequately participate, sourced from Public Health England

PHE (2020);

Acceptable (lowest) threshold = 52%

Achievable (aspire to) threshold = 60%

| | Q2 2020/21 | Q3 2020/21 | Q4 2020/21 |
|-------------------|---------------|---------------|---------------|
| Bolton CCG | 65.20% | 65.34% | 68.78% |
| GM | 64.91% | 65.99% | 69.50% |
| England | 68.68% | 68.97% | 71.04% |

Note: Whilst data was collected for Q1 2020/21 it was reportedly withdrawn due to low numbers at the beginning of the pandemic



7.4 Early Years



Early Years Milestones



Proportion of infants receiving a new birth visit by a Health Visitor within 14 days of birth.

| | 2018/ 2019 | 2019/ 2020 |
|---------|---------------|---------------|
| Bolton | 92.2% | * |
| NW | 87.9% | 87.3% |
| England | 88.8% | 86.8% |



Percentage of infants that are totally or partially breastfed at age 6-8 weeks.

| | 2018/ 2019 | 2019/ 2020 |
|---------|---------------|---------------|
| Bolton | 41.1% | * |
| NW | 38.9% | * |
| England | 46.2% | 48.0% |



Proportion of infants who received a 6-8 weeks review by the time they were 8 weeks old.

| | 2018/ 2019 | 2019/ 2020 |
|---------|---------------|---------------|
| Bolton | 94.1% | * |
| NW | 88.2% | 85.9% |
| England | 85.4% | 85.1% |



Proportion of children who received a 12-month development review by the time they turned 15 months.

| | 2018/ 2019 | 2019/ 2020 |
|---------|---------------|---------------|
| Bolton | 92.6% | * |
| NW | 88.2% | 88.5% |
| England | 82.3% | 83.6% |



Proportion of children who received a 2- 2½ year review by the time they turned 2½ years.

| | 2018/ 2019 | 2019/ 2020 |
|---------|---------------|---------------|
| Bolton | 95.5% | * |
| NW | 83.3% | 82.6% |
| England | 77.6% | 78.6% |

* Value suppressed due to incompleteness of source data



08

Wider Determinants of Health

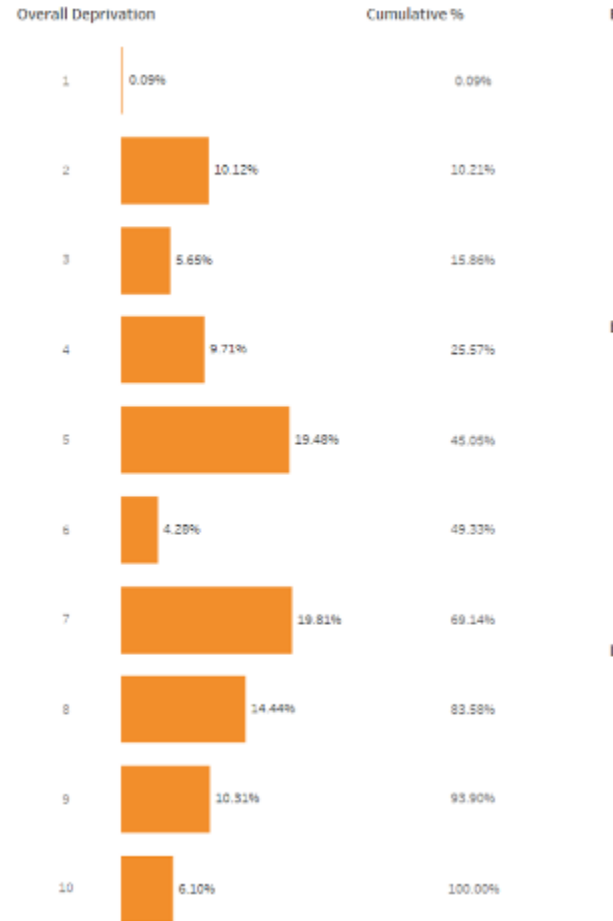




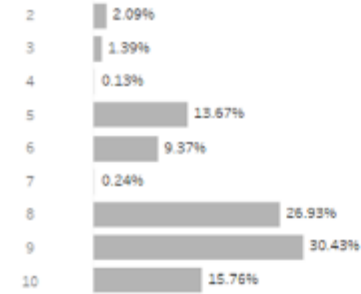
Index of Multiple Deprivation (IMD)

PCN population Deprivation Deciles

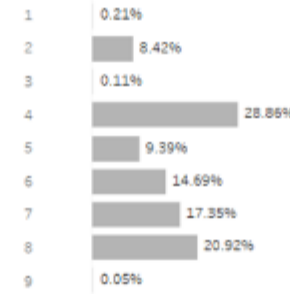
Charts show % of population in each decile. Decile 1=highest deprivation, decile 10=lowest deprivation.



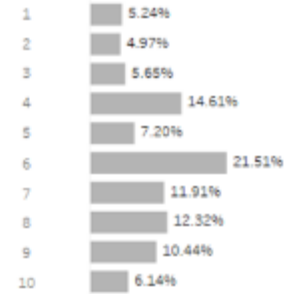
Barriers to Housing



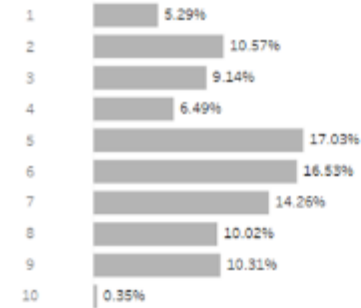
Crime



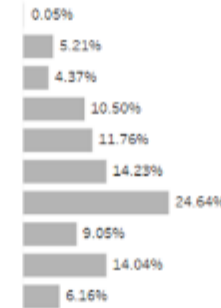
Income



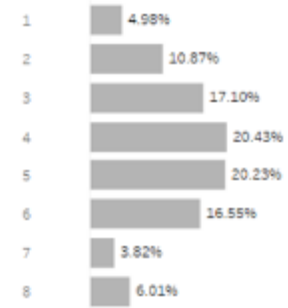
Employment



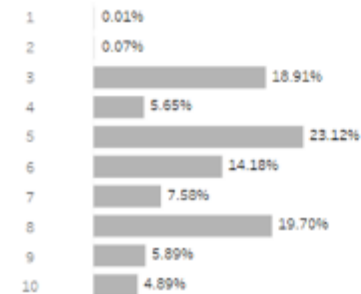
Education



Health and Disability



Living Environment



10.21% of the Westhoughton Network PCN population live in the top 20% of most deprived LSOAs in England.



Income and Children

Children (under 16 years of age) in RELATIVE low income families

‘Relative’ defined as a family income which is less than 60% of the median average income.

| | 2018/19 | 2019/20 |
|---------|---------|---------|
| Bolton | 32.2% | 32.7% |
| NW | 22.8% | 22.6% |
| England | 18.2% | 19.1% |

Free school meals percentage uptake of all pupils (state funded nursery, primary, secondary or special school)

| | 2017 | 2018 |
|---------|-------|-------|
| Bolton | 16.1% | 15.8% |
| NW | 16.1% | 16.0% |
| England | 13.9% | 13.5% |



Looked After Children

Rate per 10,000 resident population aged under 18 years

| | Bolton | North West | England |
|------|--------|------------|---------|
| 2011 | 83 | 77 | 59 |
| 2012 | 80 | 76 | 59 |
| 2013 | 83 | 79 | 60 |
| 2014 | 80 | 81 | 60 |
| 2015 | 86 | 82 | 60 |
| 2016 | 84 | 82 | 60 |
| 2017 | 87 | 86 | 62 |
| 2018 | 91 | 91 | 64 |
| 2019 | 95 | 94 | 65 |
| 2020 | 92 | 97 | 67 |

Data Source: Fingertips, Public Health England



Child Development Milestones

Percentage of children who received a 2-2½ year review who were at or above the expected level in the five Ages and Stages Questionnaire-3 domains

| | Bolton | North West | England |
|---------|--------|------------|---------|
| 2017/18 | * | 79.0% | 83.3% |
| 2018/19 | 66.4% | 78.4% | 92.9% |
| 2019/20 | * | 82.2% | 83.3% |

* Value suppressed due to incompleteness of source data

Percentage of children achieving at least the expected level of development in communication, language and literacy skills at the end of Reception (school readiness)

| | Bolton | North West | England |
|---------|--------|------------|---------|
| 2012/13 | 47.6% | 55.6% | 56.9% |
| 2013/14 | 54.2% | 61.0% | 63.6% |
| 2014/15 | 61.1% | 65.8% | 68.3% |
| 2015/16 | 64.6% | 68.1% | 70.8% |
| 2016/17 | 66.1% | 69.0% | 71.8% |
| 2017/18 | 67.5% | 69.8% | 72.4% |
| 2018/19 | 67.3% | 69.7% | 72.6% |





Air Pollution

Fine particulate matter (PM2.5) is comprised of particles with a diameter smaller than 2.5µm. Sources can be industrial, commercial and agricultural in nature; however, road transport remains the biggest contributor to urban pollution.

PM2.5 can penetrate deep into the lungs and enter the blood stream. Exposure is associated with poor health outcomes from diseases, such as, asthma, COPD, lung cancer and coronary heart disease and impacts on low birth weight, diabetes and neurodegenerative diseases.

Whilst there are no established safe inhalation levels, the World Health Organisation (WHO) advocates a PM2.5 annual limit of 10µg/m³ as a starting point to encourage progressive reductions.

Whilst predicted annual average data from the British Lung Foundation (2018) suggest that Westhoughton Network PCN practices are not located in areas which exceed WHO safe air pollution limits, it is acknowledged that actual PM2.5 levels may be greater in some areas when taking into consideration short-term exposure to high levels of fine particulate matter by the side of busy roads.

| Westhoughton Network PCN | PM2.5 (µg/m ³) |
|--------------------------|----------------------------|
| Stable Fold Surgery | 9.63 |
| Unsworth Group Practice | 9.51 |



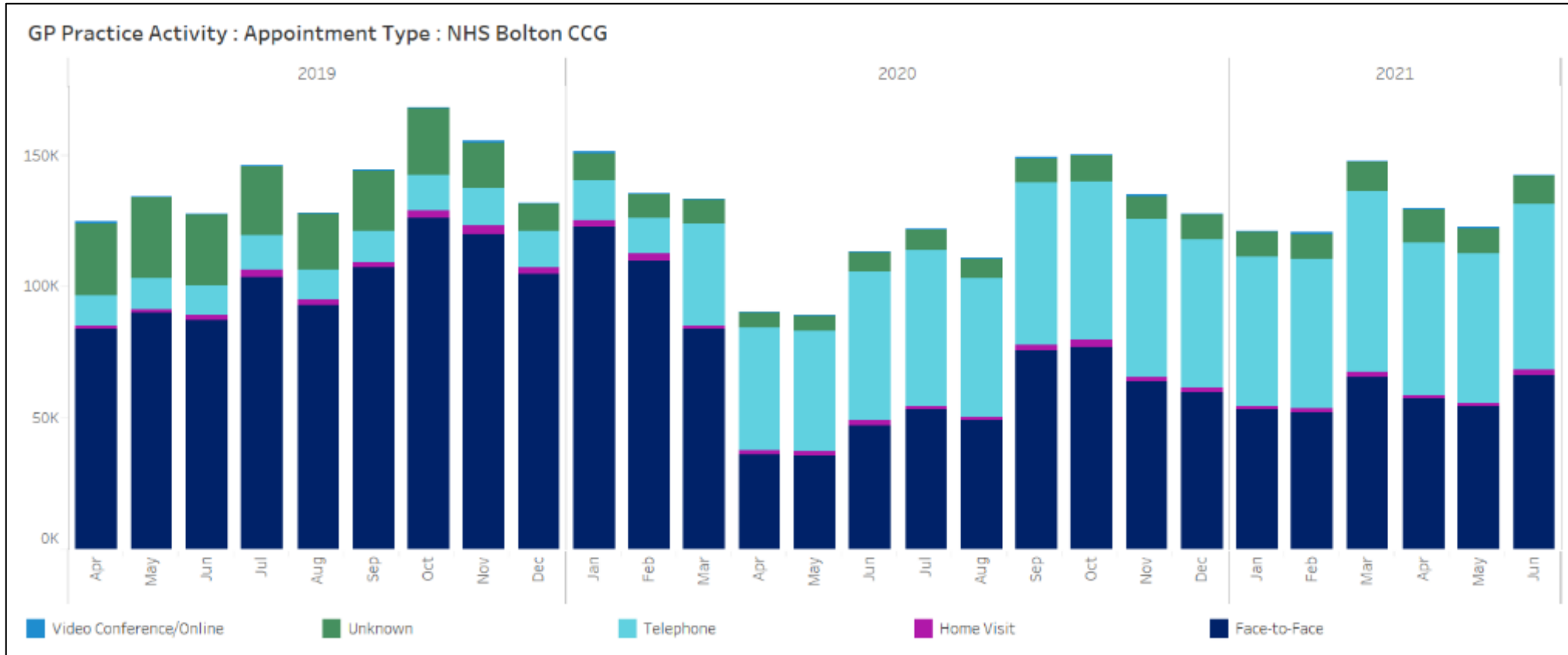
09

GP Practice Activity





GP Practice Activity: Appointment Type



| Type of GP Appointment | 2019/20 | 2020/21 |
|---------------------------|----------------------|--------------------|
| Face to Face | 73.31% (n=1,233,552) | 45.30% (n=669,877) |
| Telephone Consultation | 10.65% (n=179,279) | 46.19% (n=682,964) |
| Home Visit | 1.58% (n=26,593) | 1.34% (n=19,844) |
| Video Consultation/Online | 0.05% (n=764) | 0.07% (n=1,063) |
| Unknown | 14.41% (n=242,460) | 7.10% (n=104,982) |

Total appointment numbers were 12% lower in 20/21 than in 19/20.

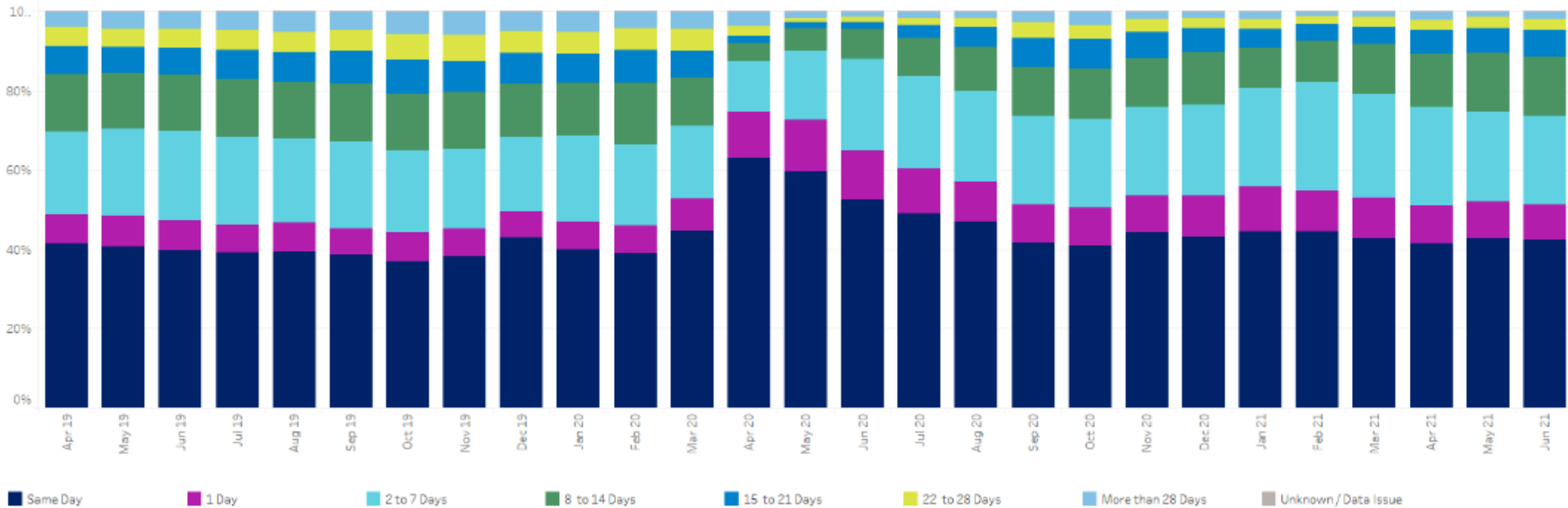
Reduced face to face appointments and increased telephone consultations are attributable to the Covid 19 pandemic



GP Practice Activity: Time of Appointment

Utilisation Management Unit

GP Appointments by Time between Booking and Appointment Date: NHS Bolton CCG



| Appointment Time Frame | 2019/20 | 2020/21 |
|------------------------|--------------------|--------------------|
| Same Day | 39.98% (n=672,805) | 46.72% (n=690,916) |
| 1 Day | 7.18% (n=120,876) | 10.57% (n=156,236) |
| 2-7 Days | 20.81% (n=350,180) | 22.73% (n=336,114) |
| 8-14 Days | 14.09% (n=237,022) | 10.57% (n=156,370) |
| 15-21 Days | 7.57% (n=127,396) | 4.73% (n=69,877) |
| 22-28 Days | 5.40% (n=90,928) | 2.52% (n=37,252) |
| > 28 Days | 4.92% (n=82,750) | 2.10% (n=31,100) |
| Unknown | 0.04% (n=691) | 0.06% (n=865) |

A higher proportion of appointments took place on the same day or the next day in 2020/21 than in 2019/20

Absolute numbers of same day and next day appointments also increased between the 2 financial years despite a 12% decrease in the total number of appointments.

Data Source: GMHSCP



10

Unplanned Hospital Activity





10.1 Total Activity

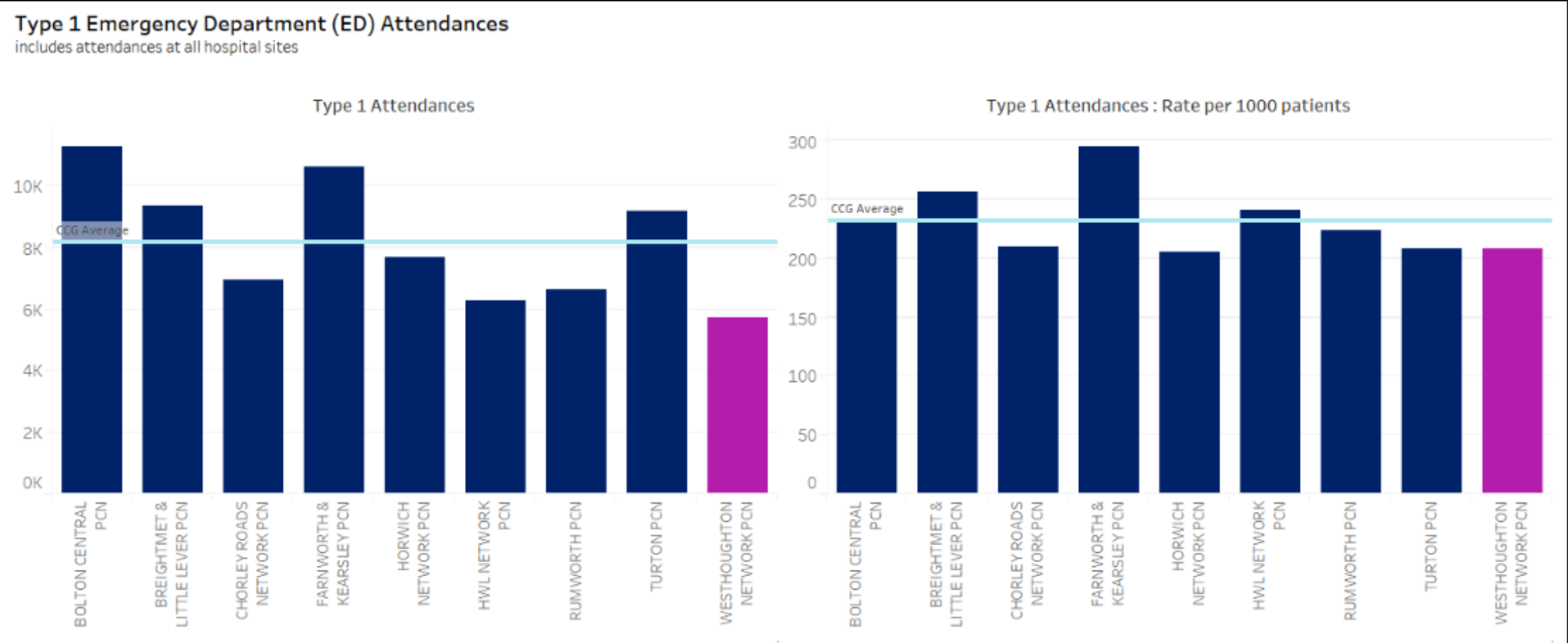


Type 1 Emergency Department (ED) Attendances



Data Source: GMHSCP

Data Period: 2020/21



The Westhoughton Network PCN population generated 5,727 Type 1 ED attendances during financial year 2020/21.

This equates to an attendance rate of 208 per 1000 patients.



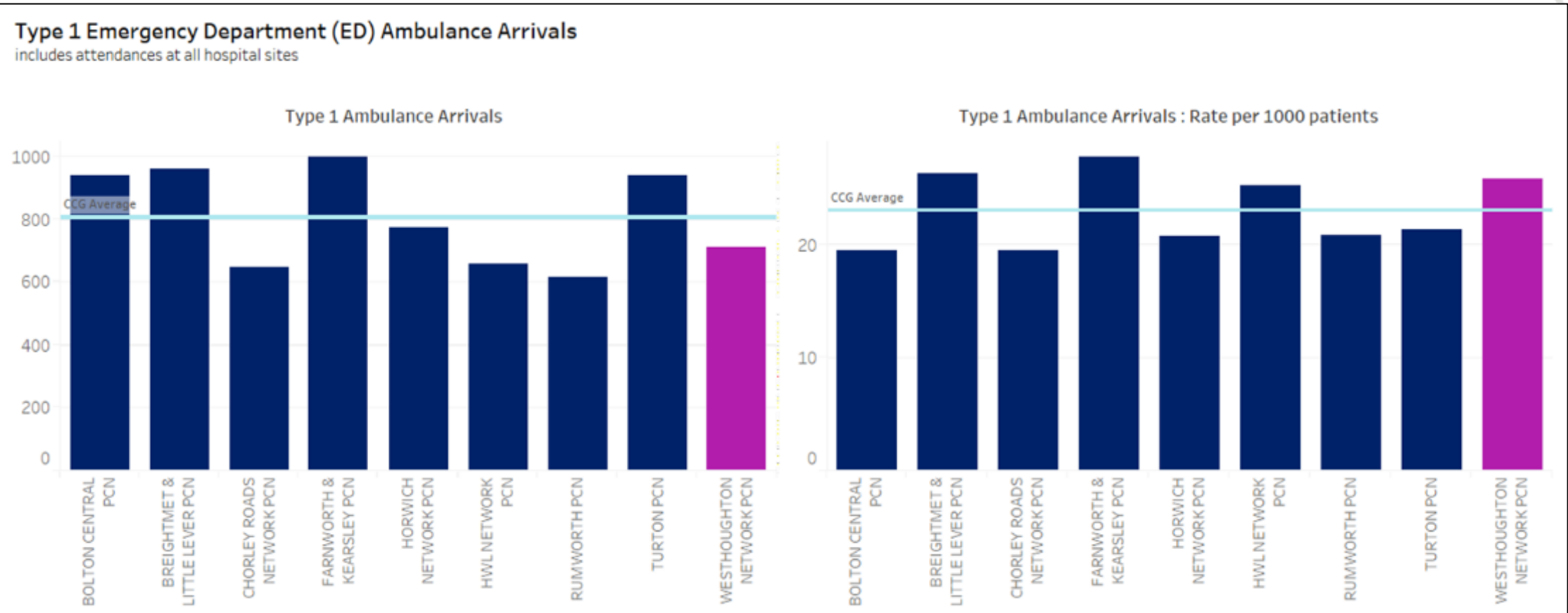
Type 1 Emergency Department (ED) Ambulance Arrivals



Utilisation Management Unit

Data Source: GMHSCP

Data Period: 2020/21



The Westhoughton Network PCN population generated 712 ambulance arrivals during financial year 2020/21.

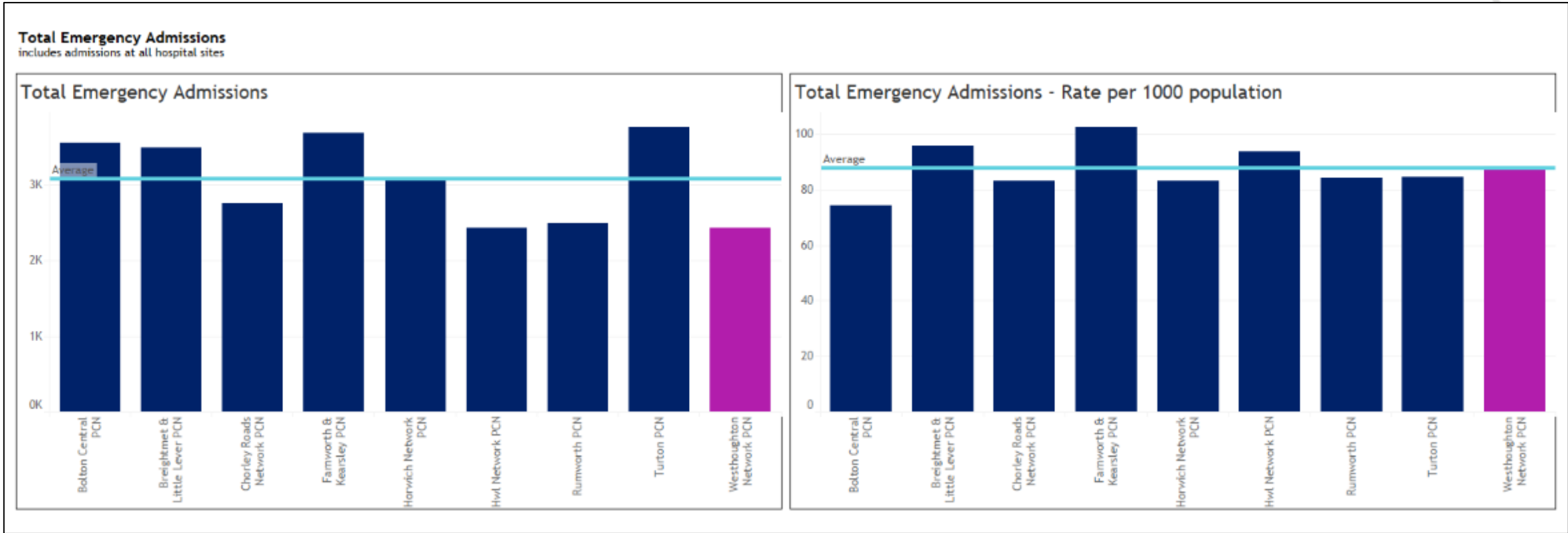
This equates to an ambulance arrival rate of 26 per 1000 patients.



Emergency Admissions

Data Source: GMHSCP

Data Period: 2020/21

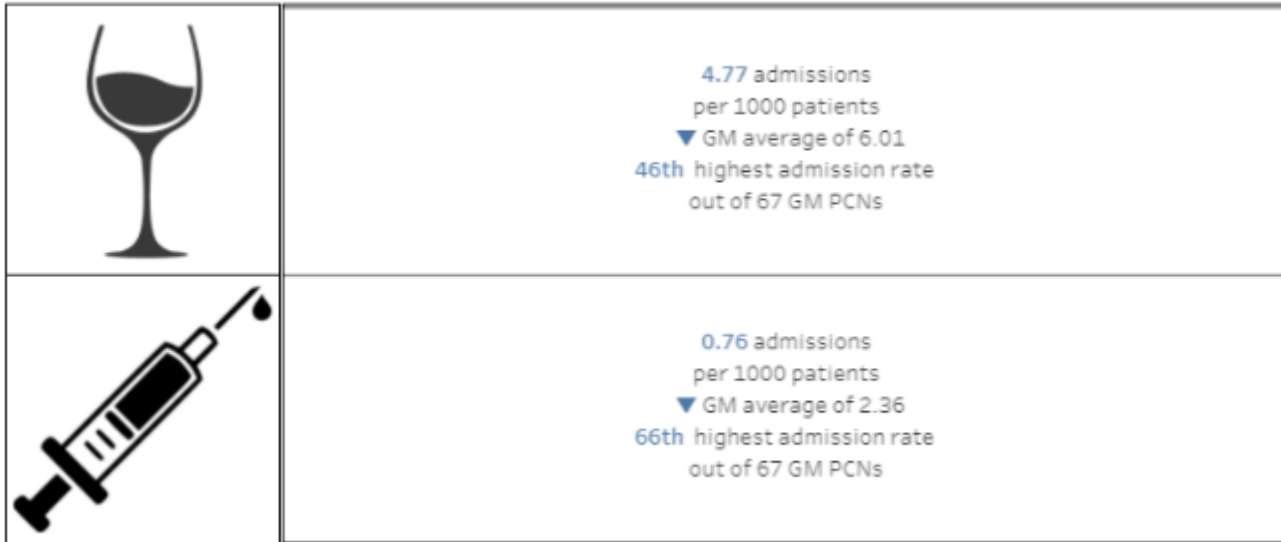


The Westhoughton Network PCN population generated 2438 emergency admissions during financial year 2020/21.

This equates to an emergency admission rate of 88 per 1000 patients.



Alcohol and Drug Related Admissions



Data Source: GMHSCP PCN Dashboard
 Data Period: April 2020 - March 2021
 Note: Data include emergency admissions to all hospital sites

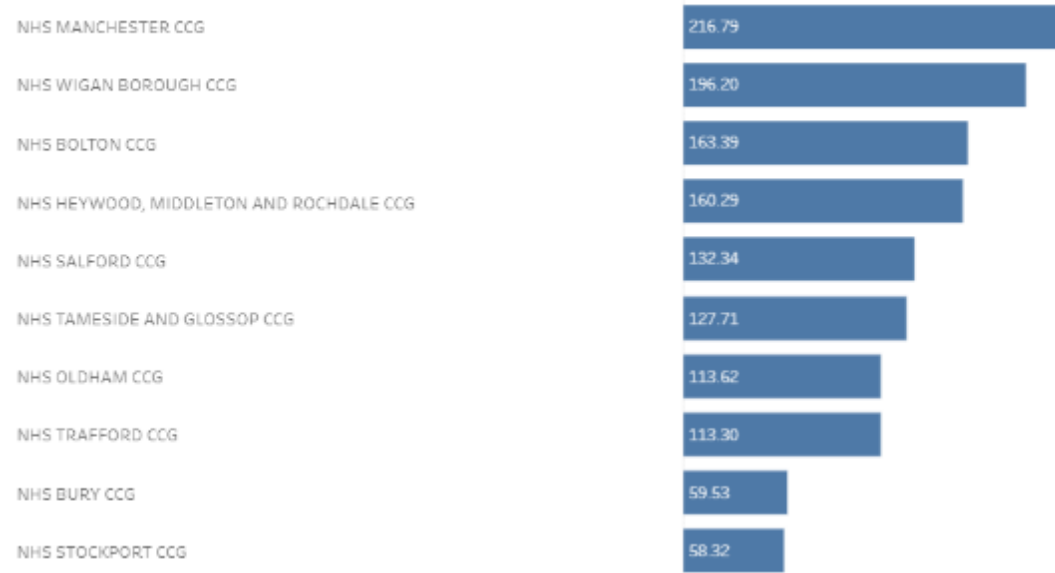
| PCN | Alcohol Related Hospital Admissions (per 1000 population) | Drug Related Hospital Admissions (per 1000 population) |
|--------------------------|---|--|
| Bolton Central | 3.39 | 2.79 |
| Brightmet & Little Lever | 6.06 | 2.04 |
| Chorley Roads Network | 3.88 | 1.21 |
| Farnworth & Kearsley | 7.35 | 2.21 |
| Horwich Network | 5.13 | 1.78 |
| HWL Network | 6.61 | 3.98 |
| Rumworth | 4.63 | 1.65 |
| Turton | 3.98 | 1.47 |
| Westhoughton Network | 4.77 | 0.76 |



Bolton Hospital Admissions with Covid-19 Diagnosis Code

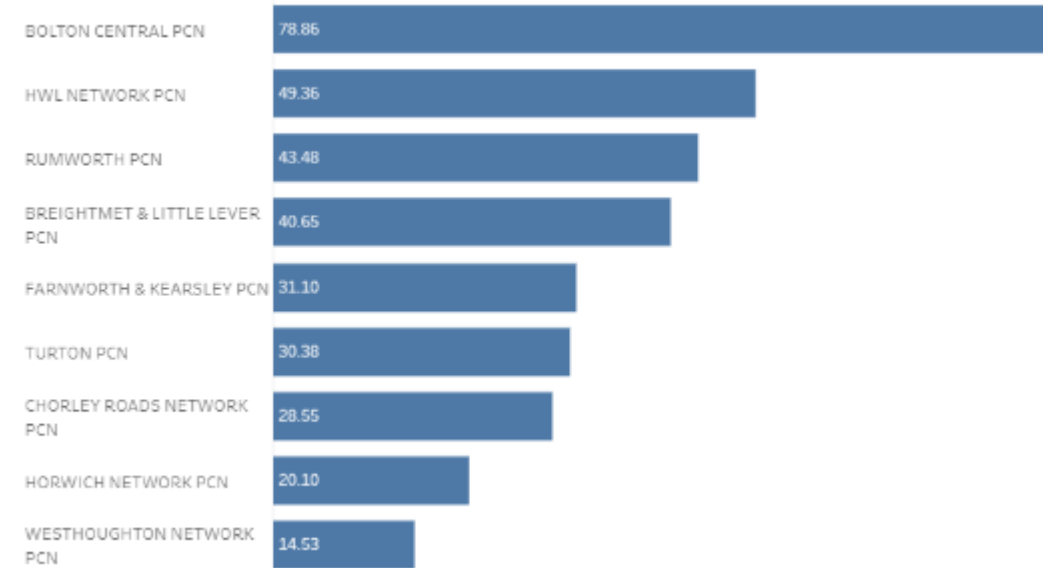
Admission Rate per 1000 population by CCG

Admissions by CCG



Admission Rate per 1000 population by Bolton PCNs

Admissions by PCN



There were 3,339 Bolton hospital admissions with a Covid-19 diagnosis code, who were subsequently 'discharged' during the period, January 2020 to June 2021.

40% (n=1,329) died in hospital.

There were 297 Westhoughton Network PCN hospital admissions with a Covid-19 diagnosis code, who were subsequently 'discharged' during the period, January 2020 to June 2021.

49% (n=146) died in hospital.

Data Source: GMHSCP, 01/01/2020 - 30/06/2021

Note: Data include only those with a Covid-19 diagnosis code (U07.1 or U07.2) on **DISCHARGE**

Note: Data include emergency admissions to all hospital sites

Whilst these data only provide a snapshot they demonstrate some of the health impact of the COVID-19 pandemic, specifically in terms of PCN level hospitalisations.



10.2 Children's Activity



Emergency Department and Emergency Admission Activity

Data Source: Fingertips, Public Health England



ED attendance rate per 1000 resident population
Aged 0-17 years

| | Bolton | NW | England |
|---------|--------|-----|---------|
| 2011/12 | 371 | 430 | 365 |
| 2012/13 | 389 | 453 | 371 |
| 2013/14 | 375 | 436 | 370 |
| 2014/15 | 365 | 438 | 383 |
| 2015/16 | 367 | 474 | 405 |
| 2016/17 | 359 | 496 | 412 |
| 2017/18 | 361 | 491 | 410 |
| 2018/19 | 365 | 489 | 422 |



Emergency admission rate per 1000 resident population
Under 18 years

| | Bolton | NW | England |
|---------|--------|-------|---------|
| 2011/12 | 112.4 | * | 70.8 |
| 2012/13 | 109.8 | 97.3 | 73.1 |
| 2013/14 | 105.1 | 93.7 | 72.2 |
| 2014/15 | 105.5 | 96.8 | 73.3 |
| 2015/16 | 101.3 | 99.5 | 75.5 |
| 2016/17 | 100.5 | 100.8 | 75.8 |
| 2017/18 | 98.7 | 102.3 | 75.3 |
| 2018/19 | 98.1 | 107.5 | 77.9 |
| 2019/20 | 95.2 | 102.2 | 75.2 |

* Not published, reason not provided



Emergency Admissions: Asthma

Emergency admissions due to asthma

Rate per 100,000 resident population, aged 0-9 years

| | Bolton | NW | England |
|---------|--------|-----|---------|
| 2011/12 | 477 | 436 | 271 |
| 2012/13 | 419 | 483 | 308 |
| 2013/14 | 320 | 406 | 260 |
| 2014/15 | 343 | 457 | 280 |
| 2015/16 | 312 | 426 | 260 |
| 2016/17 | 372 | 377 | 256 |
| 2017/18 | 343 | 345 | 230 |
| 2018/19 | 318 | 322 | 220 |
| 2019/20 | 280 | 271 | 192 |

Emergency admissions due to asthma

Rate per 100,000 resident population, aged 10-18 years

| | Bolton | NW | England |
|---------|--------|-------|---------|
| 2011/12 | 139.2 | 153.7 | 108.3 |
| 2012/13 | 161.9 | 168.7 | 122.0 |
| 2013/14 | 158.4 | 167.1 | 122.0 |
| 2014/15 | 159.7 | 194.3 | 138.7 |
| 2015/16 | 191.8 | 186.0 | 132.0 |
| 2016/17 | 143.4 | 176.1 | 137.6 |
| 2017/18 | 158.1 | 198.6 | 133.7 |
| 2018/19 | 125.6 | 178.8 | 127.9 |
| 2019/20 | 154.5 | 170.3 | 123.4 |



Mental Health Related Emergency Admissions

Emergency admissions for mental health disorders per 100,000 resident population, aged under 18 years

| | Bolton | NW | England |
|---------|--------|-------|---------|
| 2017/18 | 99.4 | 105.6 | 84.7 |
| 2018/19 | 88.7 | 104.3 | 88.3 |
| 2019/20 | 80.4 | 111.3 | 89.5 |

Emergency admissions due to self harm per 100,000 resident population, aged 10-14 years

| | Bolton | NW | England |
|---------|--------|-------|---------|
| 2017/18 | 151.5 | 313.5 | 210.4 |
| 2018/19 | 136.3 | 329.9 | 226.3 |
| 2019/20 | 133.1 | 326.8 | 219.8 |

Emergency admissions due to self harm per 100,000 resident population, aged 15-19 years

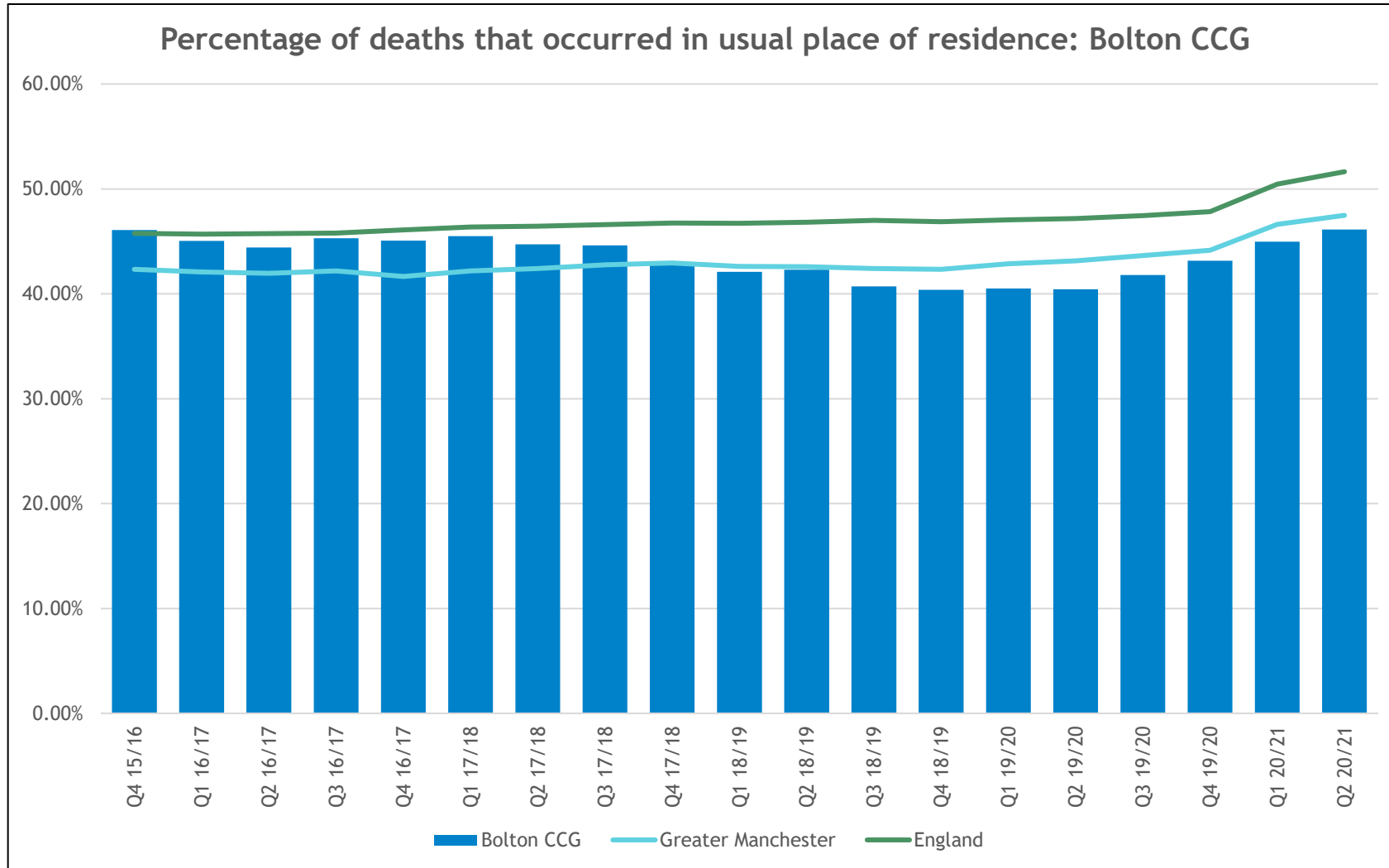
| | Bolton | NW | England |
|---------|--------|-------|---------|
| 2017/18 | 609.4 | 706.7 | 648.6 |
| 2018/19 | 511.6 | 730.4 | 659.5 |
| 2019/20 | 512.4 | 744.3 | 664.7 |



10.3 End of Life



Deaths in Usual Place of Residence



Data Source: ONS

Figures are for the 12 month rolling period to the end of the listed quarter



11

Summary





Summary

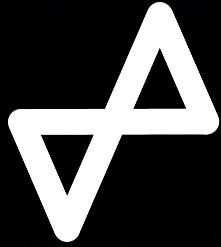
Utilising the data that are currently available it is not possible to comprehensively establish the nature, level and drivers of health inequalities across the nine Bolton PCNs.

Health outcome data do not appear to be available on a PCN footprint.

Whilst rich information is likely available at individual GP practice level, PCN aggregated and linked datasets are not accessible (for secondary use) to provide actionable insight into which communities and individuals to target, engage and work with where;

- Comparatively high disease prevalence exists.
- There are opportunities for life style interventions.
- There is overutilisation of unplanned services, such as, NHS 111 and ED, and underutilisation of preventative services, such as, annual health reviews and checks, immunisation and cancer screening.

Or to scrutinise practice level activity in order to identify, understand and reduce any unwarranted variation.



Health
Innovation
Manchester



Utilisation Management Unit

Thank you

Clinical Contact: Debbie Atkinson RN (Adult)
Clinical Development Lead
Email: debbie.atkinson3@nhs.net

Analytical Contact: Sarah Fretwell
Analytical Manager
Email: sarah.fretwell@nhs.net



DISCOVER



IMPROVE



EVALUATE



CHANGE