



Health  
Innovation  
Manchester



Utilisation Management Unit

# HEALTH INEQUALITIES DATA REPORT

---

GAP MIND THE GAP MIND THE GAP MIND THE GAP MIND THE GAP MIND THE GAP MIND THE GAP

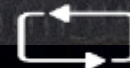
Rumworth Primary Care Network  
September 2021



DISCOVER



IMPROVE



EVALUATE



CHANGE



<b>Document Title</b>	Health Inequalities Data Report: Rumworth Primary Care Network	
<b>Report requested by</b>	Janet Castrogiovanni Managing Director Greater Manchester Primary Care Board (PCB)	
<b>Author</b>	Sarah Fretwell Analytical Manager  The Utilisation Management Unit Part of Health Innovation Manchester Suite C, Third Floor Citylabs, Nelson Street Manchester, M13 9NQ Email: <a href="mailto:sarah.fretwell@nhs.net">sarah.fretwell@nhs.net</a>	
<b>Data Analysis</b>	Sarah Fretwell Analytical Manager  The Utilisation Management Unit Part of Health Innovation Manchester	Paul White Senior Primary Care Analyst  Greater Manchester Health and Social Care Partnership
<b>Declaration of Interests</b>	None  <i>The UM Unit is part of Health Innovation Manchester which is hosted by Manchester University NHS Foundation Trust (MFT). Health Innovation Manchester accesses the human resources and finance functions within MFT but has its own corporate governance structures that report directly to the Health Innovation Manchester Board of Directors. This hosting arrangement enables the UM Unit to retain its independence and impartiality.</i>	
<b>Internal Review by</b>	Zoe Marsden Senior Information Analyst  The Utilisation Management Unit Part of Health Innovation Manchester	



# Contents

01

Introduction

02

Key Findings

03

PCN Overview

04

Population  
Demographics

05

Life Expectancy

06

Disease Prevalence

07

Disease Prevention

08

Wider Determinants of  
Health

09

GP Practice Activity

10

Unplanned Hospital  
Activity

11

Summary



# 01

---

## Introduction





# Project Brief



The Greater Manchester (GM) Primary Care Provider Board (PCB) have responsibility for the GM Primary Care Networks (PCN) Development Programme. One of the key work streams is the sourcing, collection, presentation and reporting of meaningful data for PCNs.

In March 2021 the Utilisation Management Unit (UM) produced a 'Health Inequalities Data Report' for each of the Tameside and Glossop (T&G) PCNs. The reports provided an overview of multiple health inequality indicators and associated benchmarking, drawn from a range of existing data sources.

The PCB has commissioned UM to replicate (where possible) the work done for T&G and to produce reports for the remaining 62 PCNs across GM.



# 02

---

## Key Findings





# Key Findings

Data had to be sought and collated from several different sources; not all were available on a GP practice or PCN footprint and/ or were current.

Significant analytical input has been required to present available data in a meaningful way.

Health outcome data by PCN, such as, cancer survival rates, mental health outcomes and mortality from cardiovascular and respiratory disease have not been locatable.

Whilst rich information likely exists at individual GP Practice level, PCN aggregated and linked datasets are not accessible for secondary use.

Interrogation and segmentation of PCN populations, for example, by patient demographics is not possible from data currently available for secondary use.

Actionable intelligence regarding PCN level health inequalities is limited in the absence of access to linked practice and patient level aggregated data.



# 03

---



## PCN Overview





# Rumworth PCN

Collaborative of 4 GP Practices, located in the Rumworth community neighbourhood;

GP Practice Code	GP Practice	Electoral Ward	Community Neighbourhood
P82002	Pikes Lane 1	Rumworth	Rumworth
P82609	Shanti Medical Centre	Rumworth	Rumworth
P82009	St Helens Road Practice	Hulton	Rumworth
P82004	Swan Lane Medical Centre	Rumworth	Rumworth

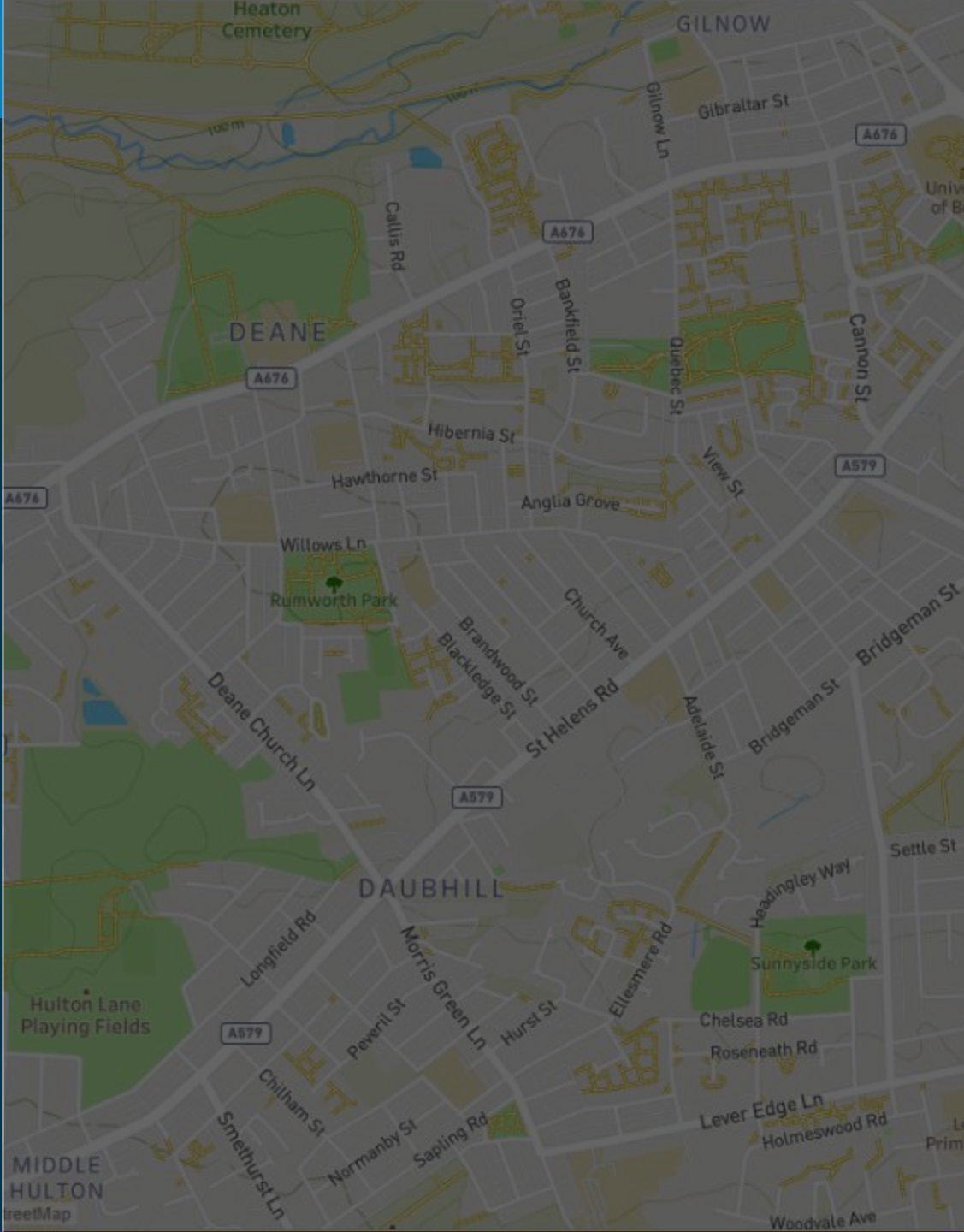
*In order to establish the nature and level of health and socio-economic inequalities Rumworth PCN, data have been sought at GP Practice and PCN levels where available.*

*Where this has not been possible this will be highlighted within the report.*

*For example, some data items were only available by Bolton resident population (community neighbourhood) rather than by registered PCN population (health neighbourhood).*

*Benchmarking at Bolton CCG, GM and national levels have been presented where data are available.*

Data Source: GMHSCP

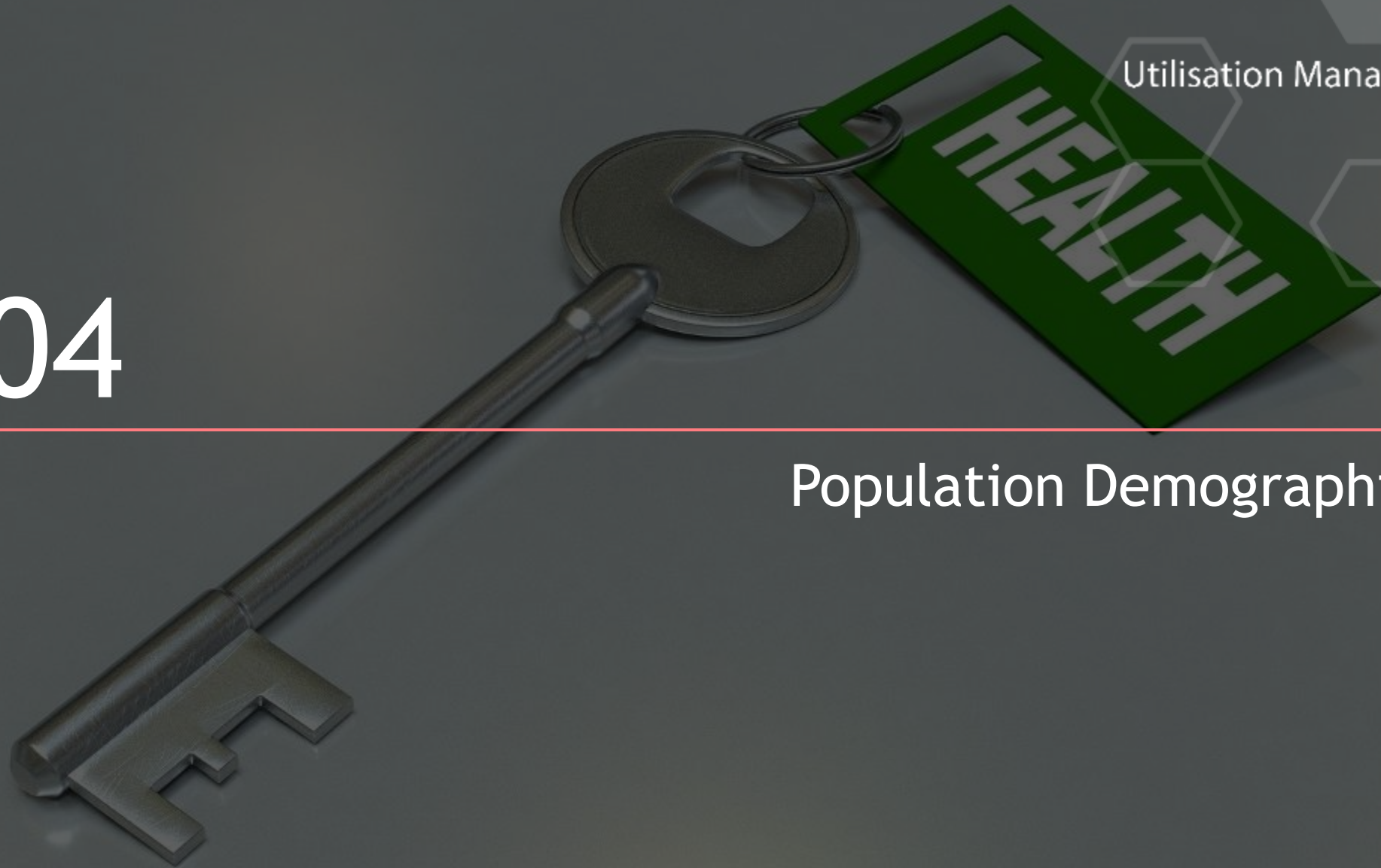




# 04

---

## Population Demographics





# Rumworth PCN Population



Utilisation Management Unit



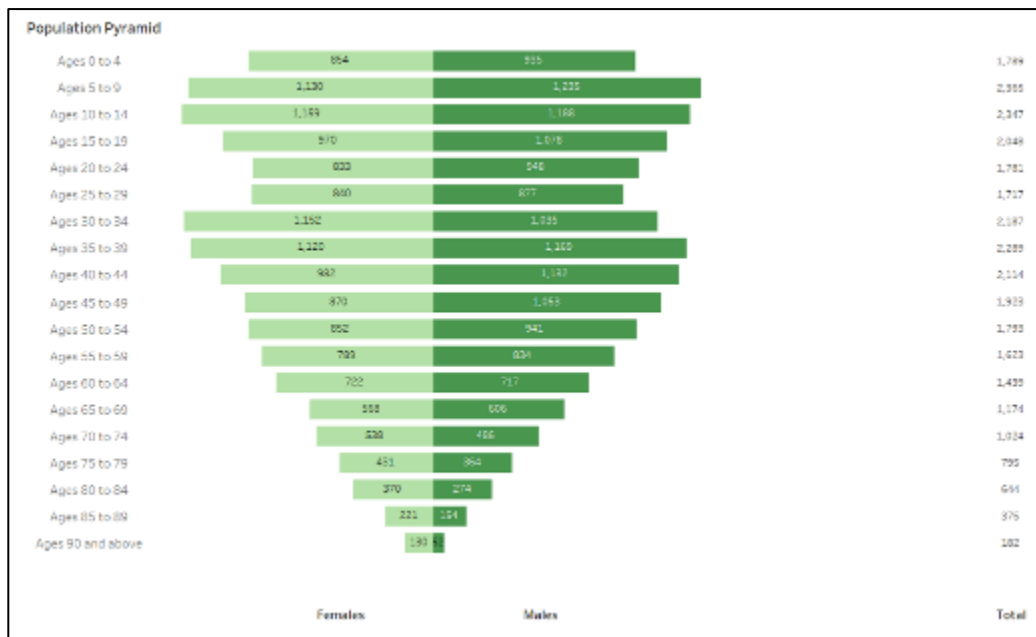
Current Registered Population = 29,609

Male: 51%; Female: 49%

Start well (0-18yrs): 28%

Live well (19-67yrs): 61%

Age well (67+yrs): 12%



## Predicted CCG Population Growth Over the Next 10 Years

Bolton CCG	Population Estimate 2021	Population Estimate 2031	% Change
<b>Age Group</b>			
0-19	74876	74002	↓1.17% (n=874)
20-39	72049	69385	↓3.70% (n=2664)
40-59	74063	72221	↓2.49% (n=1842)
60-79	53882	59316	↑10.09% (n=5434)
80+	12837	17519	↑36.47% (n=4682)
<b>Total *</b>	<b>287706</b>	<b>292443</b>	<b>↑1.65% (n=4737)</b>

Data Source: ONS

\* Figures may not sum due to rounding

Data Source: GM PCN Dashboard, September 2021

*Predicted population growth across the CCG is in the 60-79 and 80 plus year groups. The impact of the current Coronavirus pandemic on this predictive analysis is not known.*



# Vulnerable and At-Risk Groups

Ethnic Minorities

Current data have been sought but not found.

In 2011, for the wards corresponding to Rumworth PCN, 43.7% of the resident population was from an ethnic minority.

Data Source:  
2011 Census Data on Nomis,  
Office for National Statistics

LGBTQ+

Current data have been sought but not found.

It was estimated in 2017 that 1.4% of the population in Bolton identified themselves as LGBT.

Data Source:  
Subnational Sexual Identity, Office for National Statistics

Unpaid Carers

Current data have been sought but not found.

In 2011, the number of people providing unpaid care in wards corresponding to Rumworth PCN was 3125.

This number equates to 10.4% of the population.

Data Source:  
2011 Census Data on Nomis,  
Office for National Statistics

People whose 1<sup>st</sup> language is not English

Current data have been sought but not found.

5.26% (n=1,578) of households in the wards corresponding to Rumworth PCN have no residents with English as a first language.

Data Source:  
2011 Census Data on Nomis,  
Office for National Statistics

Military Veterans

Current data have been sought but not found.

In 2017 it was estimated that 4% of the population of Greater Manchester were military veterans.

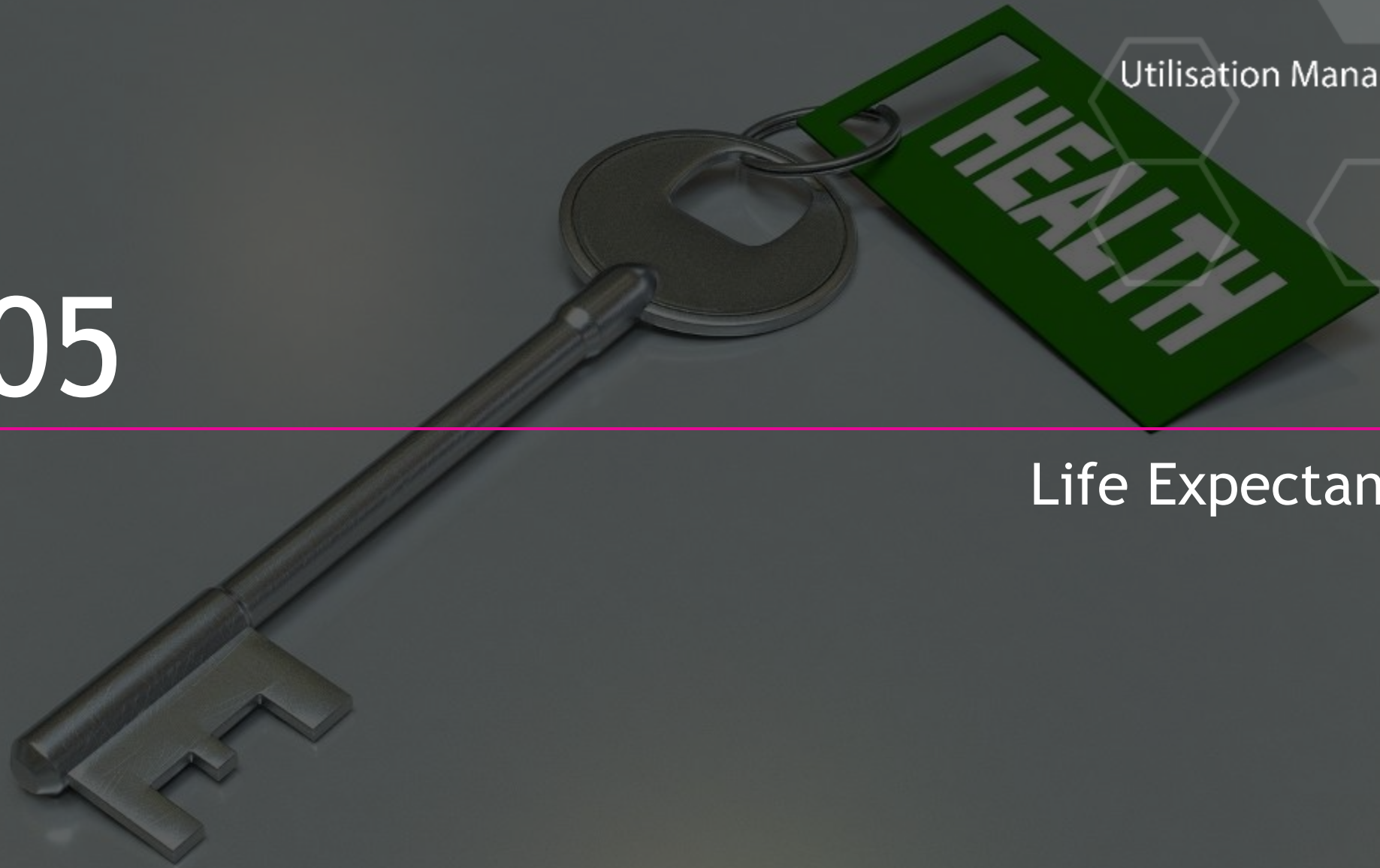
Data Source:  
2017 Annual Population Survey: UK Armed Forces Veterans residing in Great Britain



05

---

Life Expectancy





# Bolton Life Expectancy (Resident Population)

## Male Life Expectancy

Bolton: 78.0 years

North West: 78.3 years

England: 79.6 years



## Female Life Expectancy

Bolton : 81.5 years

North West: 81.9 years

England: 83.2 years



## Male Healthy Life Expectancy

Bolton : 62.5 years

North West: 61.6 years

England: 63.4 years



## Female Healthy Life Expectancy

Bolton : 58.4 years

North West: 62.5 years

England: 63.9 years



*Male life expectancy from birth in Bolton is 1.6 years lower than the national average.*

*For women the gap is slightly larger at 1.7 years below the national average.*

*Healthy life expectancy is an estimate of lifetime spent in 'very good' or 'good' health based on how individuals perceive their health (ONS).*

*Figures for Bolton are below the national average by 0.9 years for men and by 5.5 years for women.*

Data Source: Office for National Statistics (ONS)



# Life Expectancy: Early Years

## Premature Births (less than 37 weeks gestation)

Rate per 1,000 births.

	Bolton	North West	England
2010-12	75.9	77.9	75.7
2011-13	76.6	79.6	76.7
2012-14	79.7	81.4	77.6
2013-15	82.2	82.7	78.4
2014-16	86.9	84.7	79.5
2015-17	89.3	86.0	80.6
2016-18	89.3	86.3	81.2

## Child Mortality (1-17 years)

Directly standardised rate of death due to all causes per 100,000 resident population, aged 1-17 years.

	Bolton	North West	England
2010-12	13.3	14.2	12.5
2011-13	10.7	13.5	11.9
2012-14	11.7	13.1	12.0
2013-15	10.4	14.0	11.9
2014-16	14.2	14.3	11.6
2015-17	15.8	14.1	11.2
2016-18	13.3	13.3	11.0
2017-19	12.4	12.6	10.8



# 06

---

## Disease Prevalence







# Asthma

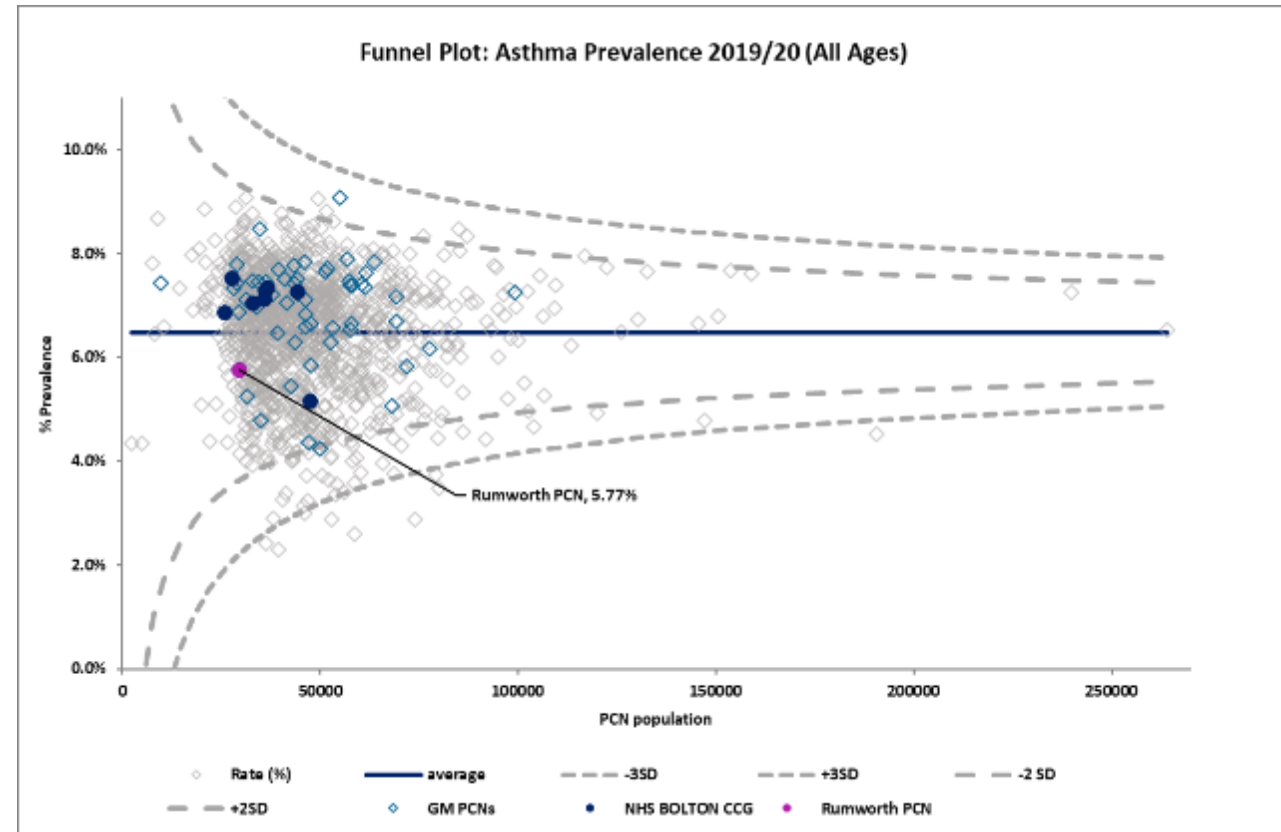
Data Source: Quality Outcomes Framework, 2019/20

Rumworth PCN Asthma	Practice Prevalence
Pikes Lane 1	6.15%
Shanti Medical Centre	5.46%
St Helens Road Practice	6.26%
Swan Lane Medical Centre	5.32%
<b>PCN Average</b>	<b>5.77%</b>

GM Average	England Average
6.95%	6.48%

2019/20 data show that 79.38% were in receipt of an asthma review in the preceding 12 months.

Bolton Central PCN had the highest achievement rate across Bolton at 83.40%.



Rumworth PCN's asthma prevalence is lower than the national average.



# Cancer

Data Source: Quality Outcomes Framework, 2019/20

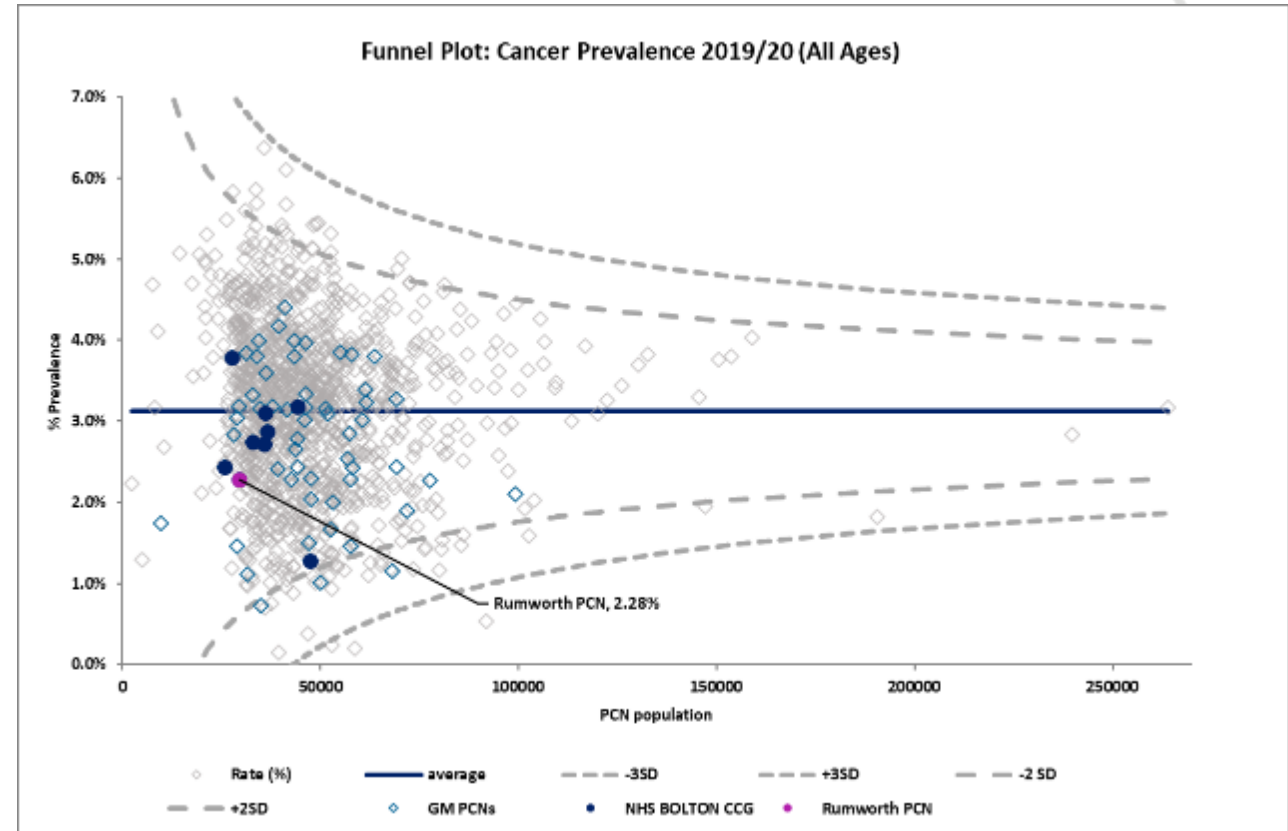
Rumworth PCN Cancer	Practice Prevalence
Pikes Lane 1	2.70%
Shanti Medical Centre	0.97%
St Helens Road Practice	3.24%
Swan Lane Medical Centre	2.17%
<b>PCN Average</b>	<b>2.28%</b>

GM Average	England Average
2.76%	3.13%

Rumworth PCN's cancer prevalence is lower than the national average.

2019/20 data show that 94.74% of those diagnosed with cancer in the preceding 15 months, were in receipt of a review within 6 months of the date of diagnosis.

Westhoughton Network PCN had the highest achievement rate across Bolton CCG at 97.37%.



Information regarding PCN cancer outcomes has been sought but not found, however district level data for 2017-19 suggest survival rates are lower across Bolton.

Fingertips PHE (2017-19) Per 100,000 Population	England	Bolton
Under 75 Mortality from Cancer	129.2	136.9
Under 75 Mortality from Cancer Considered Preventable	54.1	64.0



# Cardiovascular Disease - Primary Prevention (30-74 years)



Utilisation Management Unit

Data Source: Quality Outcomes Framework, 2019/20

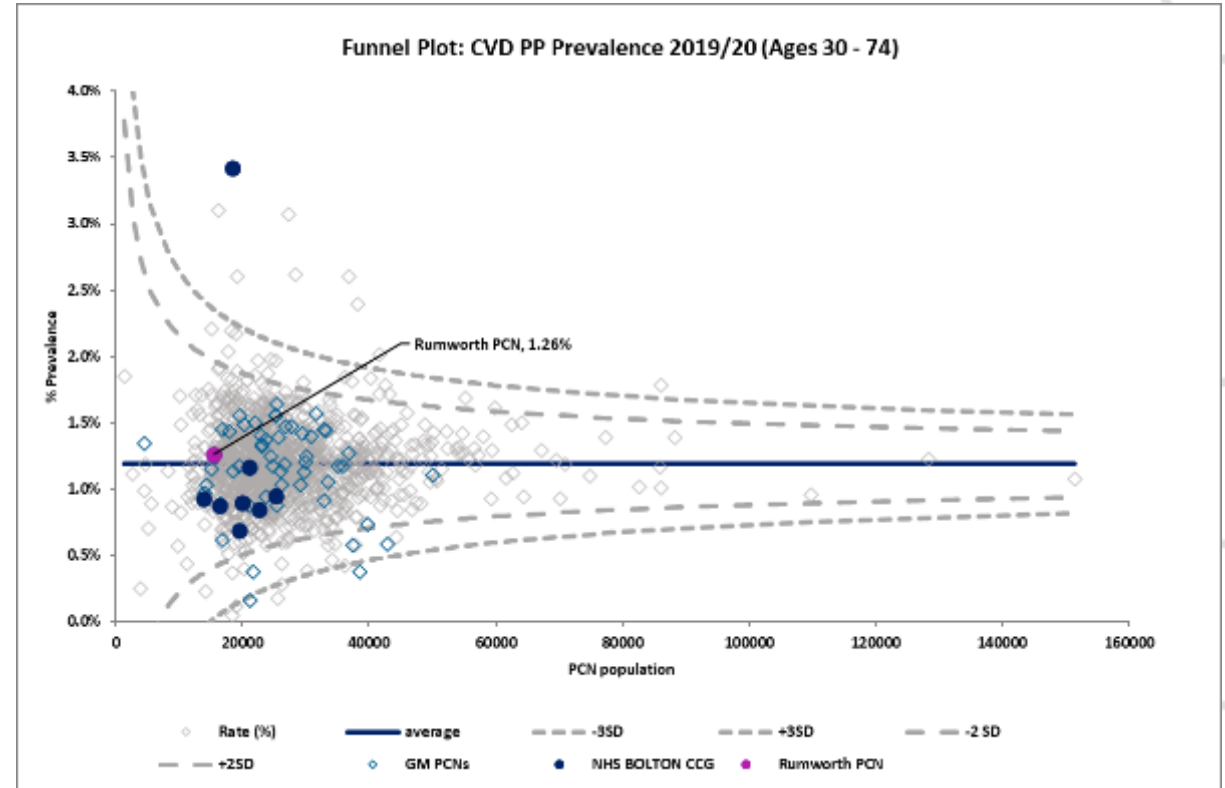
Rumworth PCN CVD-PP	Practice Prevalence
Pikes Lane 1	1.12%
Shanti Medical Centre	2.28%
St Helens Road Practice	0.75%
Swan Lane Medical Centre	1.08%
<b>PCN Average</b>	<b>1.26%</b>

GM Average	England Average
1.16%	1.19%

Rumworth PCN's CVD-PP prevalence is similar to the national average.

2019/20 data show that 90.00% of this cohort who had a recorded CVD risk assessment score of  $\geq 20\%$  in the preceding 12 months were treated with statins.

Bolton Central, Horwich Network, Farnworth & Kearsley, and Westhoughton Network PCNs had the highest achievement rates across Bolton at 100%.



Information regarding PCN cardiovascular disease outcomes has been sought but not found, however district level data for 2017-19 suggest poorer outcomes across Bolton.

Fingertips PHE (2017-19) Per 100,000 Population	England	Bolton
Under 75 Mortality from all Cardiovascular diseases	70.4	99.7
Under 75 Mortality from Cardiovascular Disease Considered Preventable	28.2	39.4



# Chronic Obstructive Pulmonary Disease (COPD)

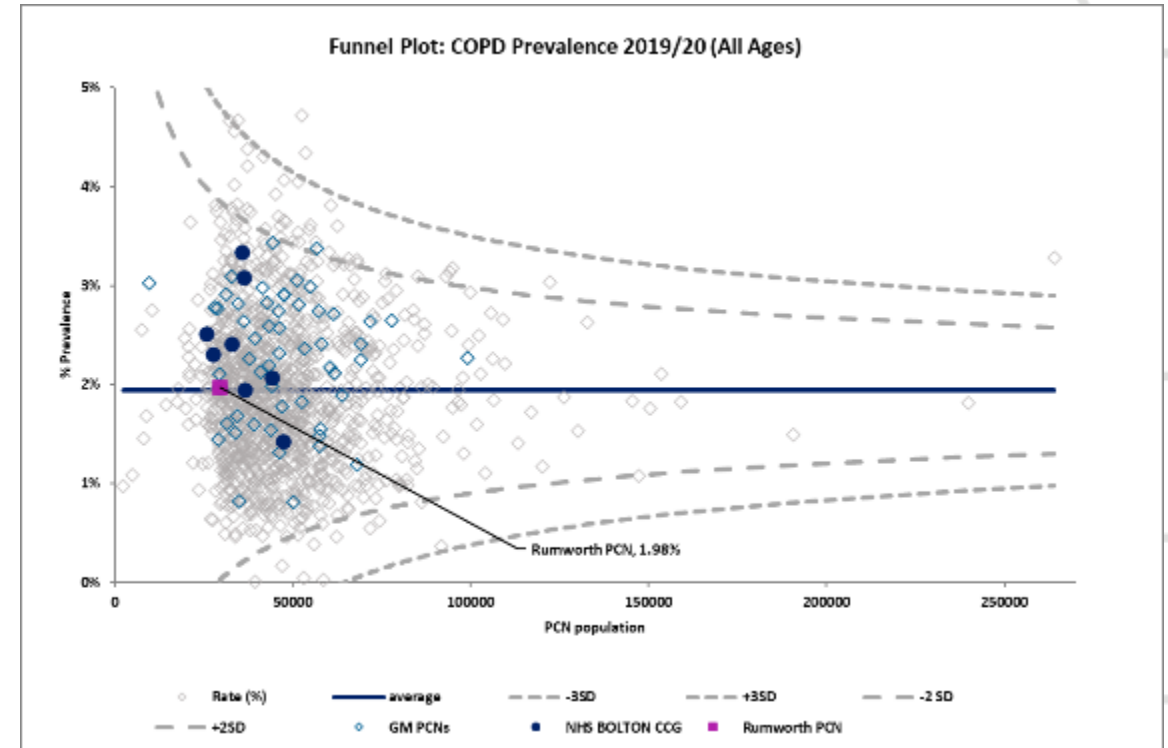
Data Source: Quality Outcomes Framework, 2019/20

Rumworth PCN COPD	Practice Prevalence
Pikes Lane 1	3.40%
Shanti Medical Centre	0.99%
St Helens Road Practice	2.23%
Swan Lane Medical Centre	1.58%
<b>PCN Average</b>	<b>1.98%</b>

GM Average	England Average
2.33%	1.94%

Rumworth PCN's COPD prevalence is similar to the national average, acknowledging variation at practice level.

2019/20 data show that 89.06% were in receipt of a COPD review in the preceding 12 months. Horwich Network PCN had the highest achievement across Bolton at 94.64%.



Information regarding PCN respiratory disease outcomes has been sought but not found, however district level data for 2017-19 suggest poorer outcomes across Bolton.

Fingertips PHE (2017-19) Per 100,000 Population	England	Bolton
Under 75 Mortality from Respiratory Disease	34.2	53.1
Under 75 Mortality from Respiratory Disease Considered Preventable	20.0	28.7



# Dementia

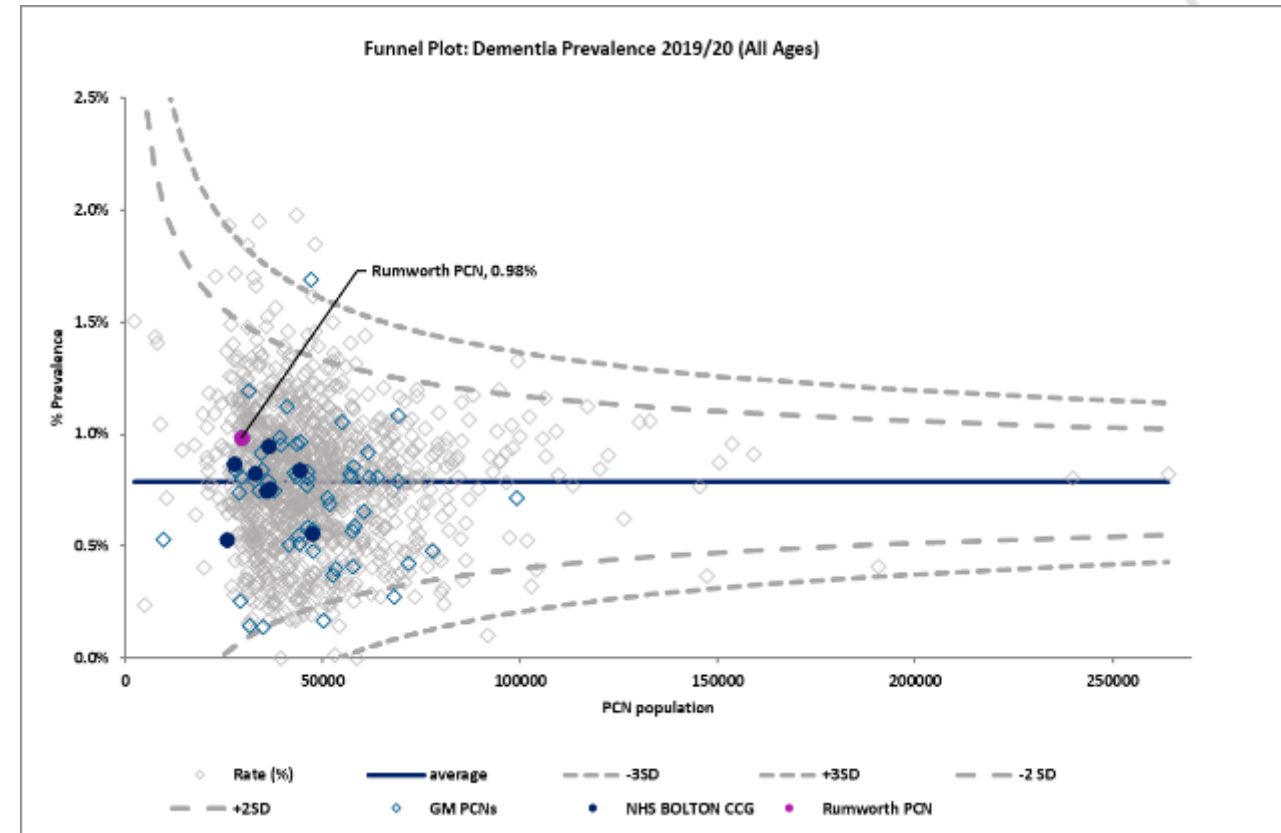
Data Source: Quality Outcomes Framework, 2019/20

Rumworth PCN Dementia	Practice Prevalence
Pikes Lane 1	0.81%
Shanti Medical Centre	0.18%
St Helens Road Practice	0.91%
Swan Lane Medical Centre	1.78%
<b>PCN Average</b>	<b>0.98%</b>

GM Average	England Average
0.73%	0.79%

2019/20 data show that 94.18% had their care plan reviewed in a face-to-face meeting in the preceding 12 months.

*This was the highest achievement across Bolton.*



*Rumworth PCN's dementia prevalence is slightly higher than the national rate, acknowledging variation at practice level.*



# Diabetes (17 years+)

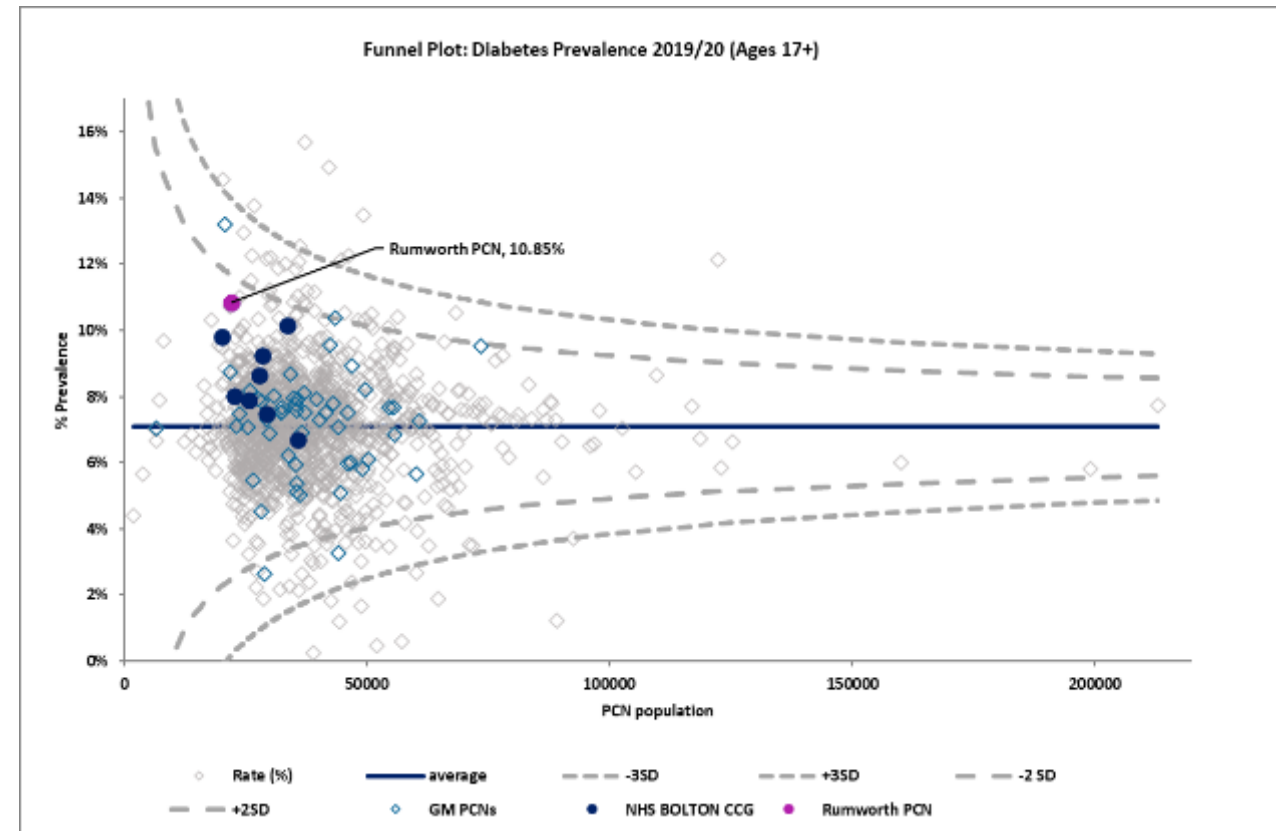
Data Source: Quality Outcomes Framework, 2019/20

Rumworth PCN Diabetes	Practice Prevalence
Pikes Lane 1	10.20%
Shanti Medical Centre	11.39%
St Helens Road Practice	9.27%
Swan Lane Medical Centre	12.34%
<b>PCN Average</b>	<b>10.85%</b>

GM Average	England Average
7.42%	7.08%

2019/20 data show in the absence of moderate or severe frailty, that for 62.59% their last IFCC-HbA1c was 58 mmol/mol or less in the preceding 12 months. Horwich Network PCN had the highest achievement across Bolton with 70.44%.

70.18% were recorded as being in receipt of a foot examination and risk classification within the preceding 12 months. Horwich Network PCN had the highest achievement across Bolton with 90.86%.



Rumworth PCN's diabetes prevalence is higher than the national average.



# Hypertension

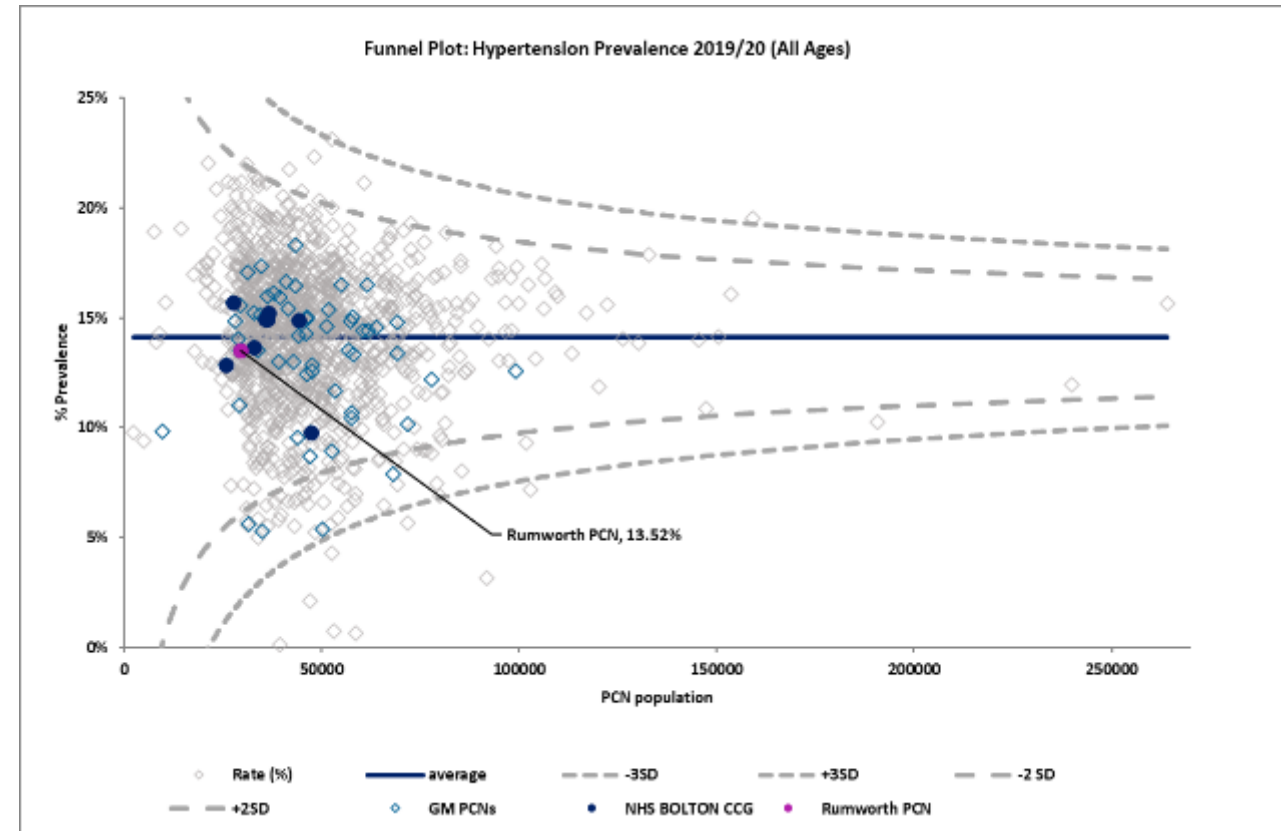
Data Source: Quality Outcomes Framework, 2019/20

Rumworth PCN Hypertension	Practice Prevalence
Pikes Lane 1	15.54%
Shanti Medical Centre	9.62%
St Helens Road Practice	15.33%
Swan Lane Medical Centre	13.29%
<b>PCN Average</b>	<b>13.52%</b>

GM Average	England Average
13.53%	14.09%

2019/20 data show for those aged 79 years or under, that for 71.16% their last blood pressure recording was 140/90 mmHg or less in the preceding 12 months.

Bolton Central PCN had the highest achievement rate across Bolton at 77.71%.



Rumworth PCN's hypertension prevalence was comparable to the national rate.



# Learning Disability

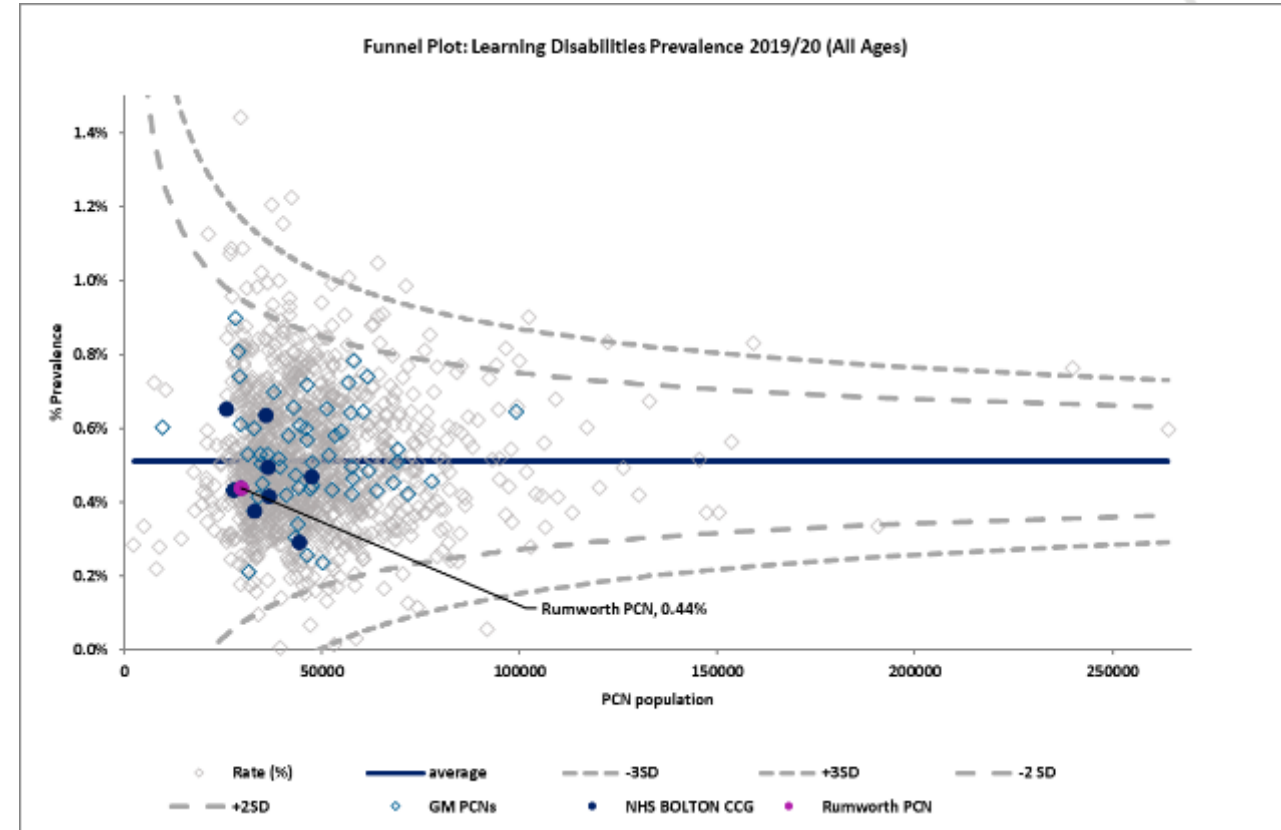
Data Source: Quality Outcomes Framework, 2019/20

Rumworth PCN Learning Disability	Practice Prevalence
Pikes Lane 1	0.48%
Shanti Medical Centre	0.49%
St Helens Road Practice	0.32%
Swan Lane Medical Centre	0.45%
<b>PCN Average</b>	<b>0.44%</b>

GM Average	England Average
0.53%	0.51%

Annual health check data which has been located by CCG suggest whilst there has been a reduction in the percentage of health checks completed, achievement rates were above GM and national levels in both 2018/19 and 2019/20.

Learning Disabilities Health Check Scheme, NHS Digital	2018/19	2019/20
Bolton CCG	70.7%	67.9%
GM	52.5%	55.9%
England	51.3%	51.9%



Rumworth PCN's learning disability prevalence is slightly lower than the national rate.





## Severe Mental Health

Data Source: Quality Outcomes Framework, 2019/20

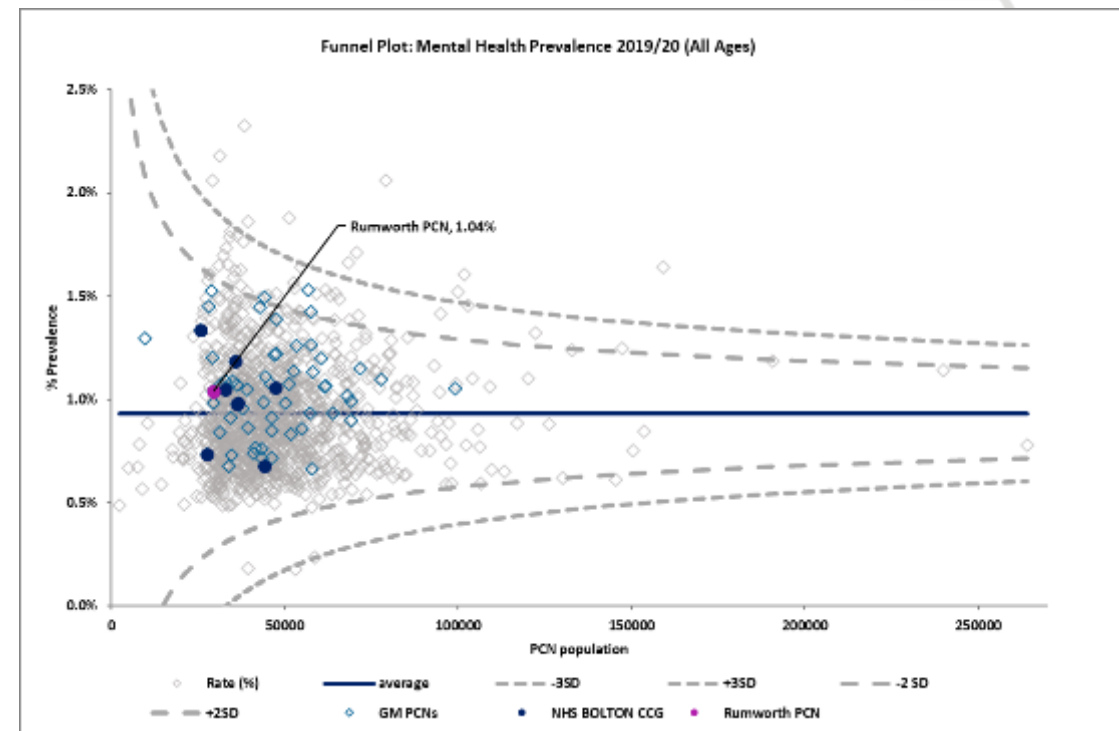
Rumworth PCN Severe Mental Health	Practice Prevalence
Pikes Lane 1	0.91%
Shanti Medical Centre	0.85%
St Helens Road Practice	1.23%
Swan Lane Medical Centre	1.14%
<b>PCN Average</b>	<b>1.04%</b>

GM Average	England Average
1.03%	0.93%

2019/20 data show that 82.16% of those on the severe mental health register had a comprehensive care plan documented in their care record in the preceding 12 months.

Turton PCN had the highest achievement rate across Bolton at 94.50%.

Information regarding PCN Mental Health outcomes has been sought but not found, however district level data suggest a similar level of intentional self-harm across Bolton, when benchmarked against national figures.



Rumworth PCN's severe mental health prevalence is similar to the national average.

Fingertips PHE Per 100,000 Population	England	Bolton
Suicide Rate (2017/19)	10.1	11.2
Emergency Hospital Admissions for Intentional Self-Harm (2019/20)	192.6	186.2



# Visual Impairment

Data regarding the number of Rumworth PCN adults who have a moderate or severe visual impairment has been sought but not found. Estimated numbers with projections to 2040 that are available on a Bolton footprint, suggest increasing prevalence attributed to ageing populations. Whilst some sight loss may be correctable, age related macular degeneration is the most common cause of registrable sight loss in older people.

Bolton	2020	2025	2030	2035	2040
People aged 18-64 predicted to have a serious visual impairment	109	109	109	109	109
People aged 65-74 predicted to have a moderate or severe visual impairment	1,546	1,490	1,652	1,792	1,747
People aged 75 and over predicted to have a moderate or severe visual impairment	2,802	3,311	3,472	3,683	4,042
<b>Total</b>	<b>4,457</b>	<b>4,910</b>	<b>5,233</b>	<b>5,584</b>	<b>5,898</b>



# Hearing Loss



## Utilisation Management Unit

Data regarding how many Rumworth PCN adults have hearing loss has been sought but not found.

Estimated numbers with projections to 2040 available on a Bolton footprint suggest increasing prevalence attributed to an ageing population.

Hearing loss is a common but often unacknowledged long term condition that can have an adverse impact on a person's health and quality of life.

<b>Bolton Some Hearing Loss</b>	<b>2020</b>	<b>2025</b>	<b>2030</b>	<b>2035</b>	<b>2040</b>
People aged 18-64 predicted to have some hearing loss	16,492	17,002	16,782	16,343	16,181
People aged 65-74 predicted to have some hearing loss	12,827	12,084	13,270	14,534	14,392
People aged 75 -84 predicted to have some hearing loss	11,823	14,041	14,793	14,372	16,125
People aged 85+ predicted to have some hearing loss	5,466	6,161	7,202	8,933	9,220
<b>Total</b>	<b>46,608</b>	<b>49,288</b>	<b>52,047</b>	<b>54,182</b>	<b>55,918</b>
Figures may not sum due to rounding					

<b>Bolton Severe Hearing Loss</b>	<b>2020</b>	<b>2025</b>	<b>2030</b>	<b>2035</b>	<b>2040</b>
People aged 18-64 predicted to have severe hearing loss	997	1,038	1,020	976	964
People aged 65-74 predicted to have severe hearing loss	828	778	853	936	928
People aged 75 -84 predicted to have severe hearing loss	1,626	1,890	2,203	2,022	2,230
People aged 85+ predicted to have severe hearing loss	1,305	1,471	1,720	2,133	2,201
<b>Total</b>	<b>4,756</b>	<b>5,177</b>	<b>5,796</b>	<b>6,067</b>	<b>6,323</b>
Figures may not sum due to rounding					



# 07

---

## Disease Prevention





## 7.1 Life Style



# Physical Activity

Information regarding physical activity was only locatable at a district level.

Fingertips PHE (2018/19)	England	Bolton
Percentage of Physically Active Children and Young People	46.8%	46.0%
Percentage of Physically Active Adults	67.2%	61.6%

For the period 2018/19, data suggest when benchmarked against national figures, a higher proportion of physically inactive adults in Bolton.

The percentage of physically active children and young people is in line with the national average.



# Obesity (18 years+)

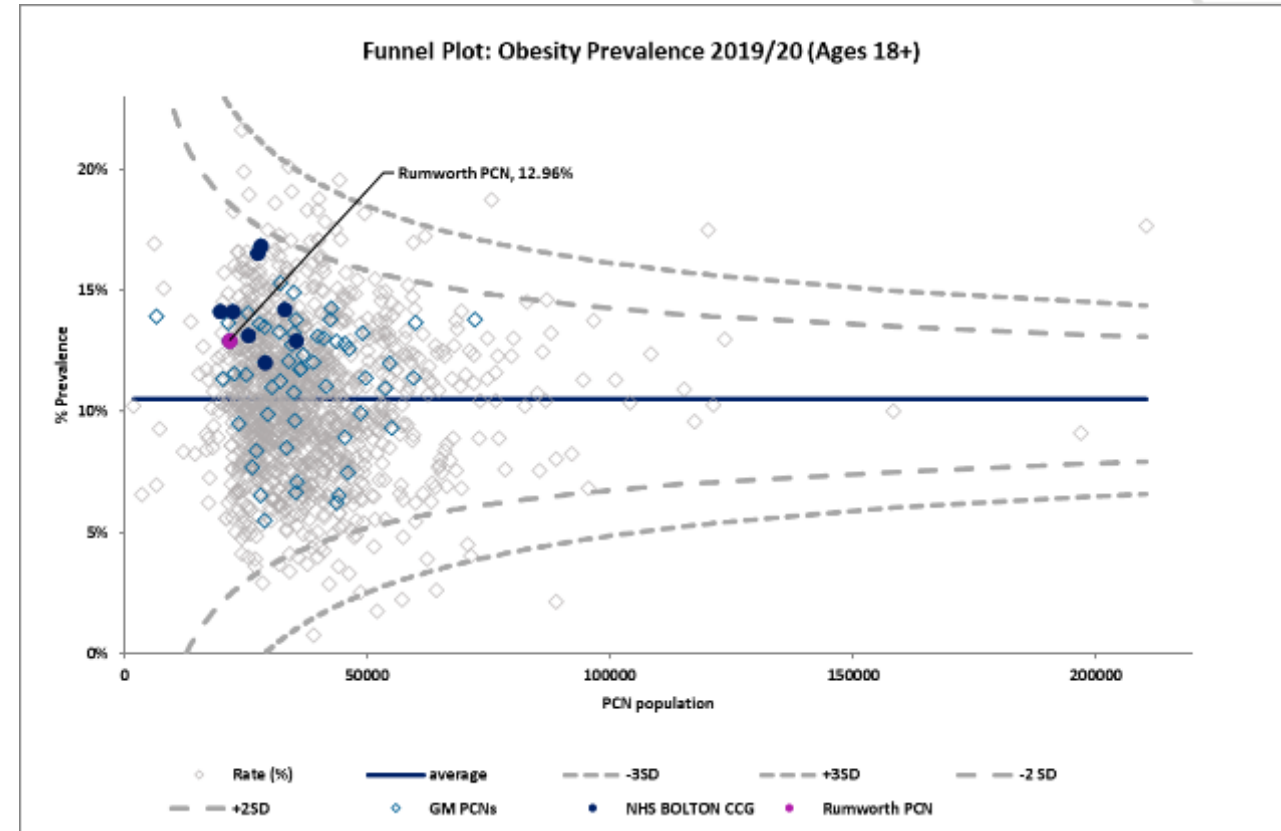
Data Source: Quality Outcomes Framework, 2019/20

Rumworth PCN Obesity	Practice Prevalence
Pikes Lane 1	12.41%
Shanti Medical Centre	11.54%
St Helens Road Practice	11.81%
Swan Lane Medical Centre	15.38%
<b>PCN Average</b>	<b>12.96%</b>

GM Average	England Average
11.58%	10.51%

Data regarding childhood obesity has only been locatable at a district level;

Fingertips PHE	England	Bolton
Year 6: Prevalence of Overweight including Obesity (2019/20)	35.2%	36.1%



As is the case for all PCNs within Bolton CCG, Rumworth PCN's obesity prevalence is higher than the national average.



# Smoking (15 years+)



Utilisation Management Unit

Data Source: Quality Outcomes Framework, 2019/20

Rumworth PCN Smoking	Practice Prevalence
Pikes Lane 1	22.96%
Shanti Medical Centre	14.80%
St Helens Road Practice	18.13%
Swan Lane Medical Centre	15.81%
<b>PCN Average</b>	<b>18.07%</b>

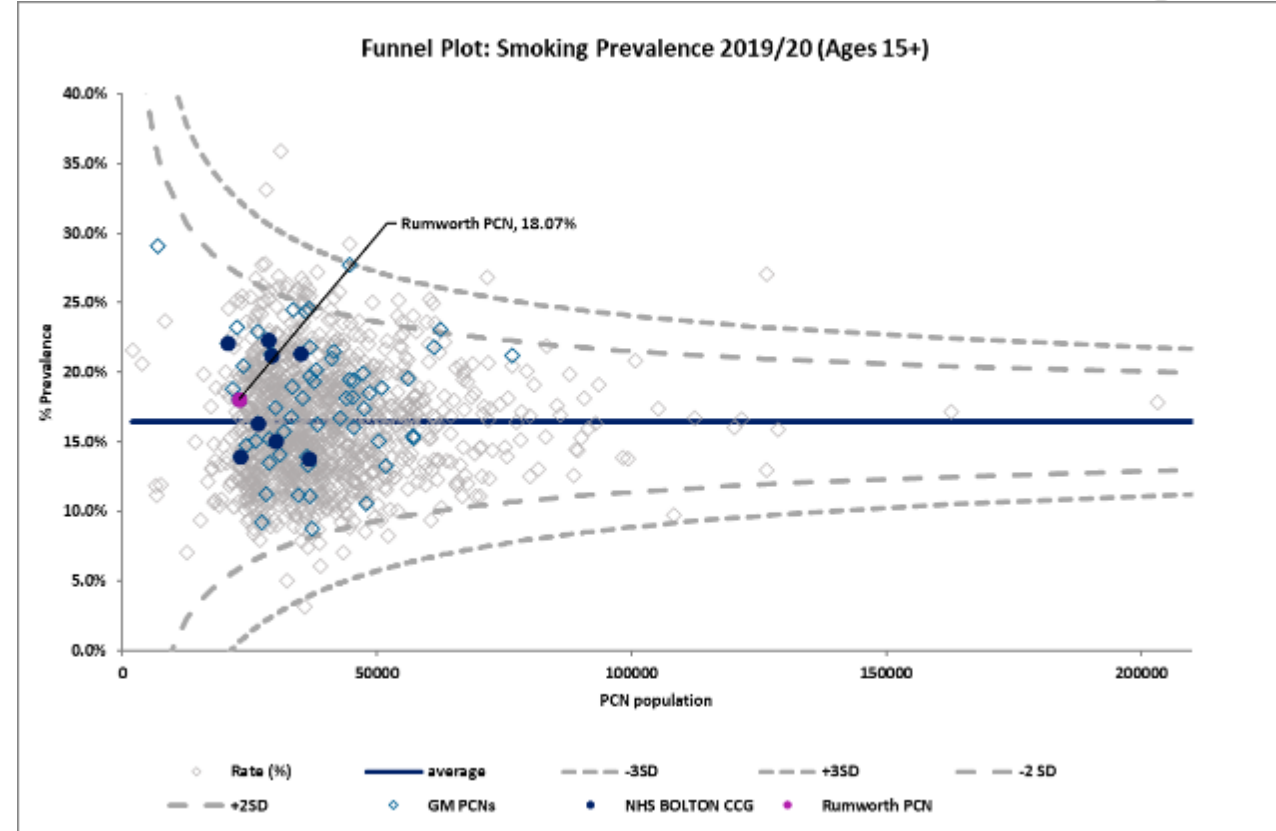
GM Average	England Average
18.16%	16.47%

2019/20 data show that 82.43% of smokers had a record of an offer of support and treatment within the preceding 24 months.

Brightmet and Little Lever PCN had the highest achievement rate across Bolton at 92.96%.

Data regarding smoking in pregnancy has only been locatable at a district level;

Fingertips PHE	England	Bolton
Smoking Status at Time of Delivery (2019/20)	10.4%	12.4%



Rumworth PCN's smoking prevalence is similar to the national rate.

Data regarding the prevalence of e-cigarette use have been sought but not found.



## Tooth Decay in 3 Year Olds

Mean severity of tooth decay in children aged three years based on the mean number of teeth per child sampled which were either actively decayed or had been filled or extracted.

	2012/13	2019/20
Bolton	0.76	Not available
NW	0.47	0.42
England	0.36	0.31

## Chlamydia Detection Rates

All chlamydia diagnoses in 15 to 24 year olds attending specialist and non-specialist sexual health services, who are residents in England, expressed as a rate per 100,000 population.

	2015	2016	2017	2018	2019	2020
Bolton	1933	2054	1714	2063	1305	601
NW	2361	2277	2168	2176	1990	1249
England	1914	1917	1929	1999	2043	1420

## Accidental Poisoning in 0-4 Year Olds

Emergency hospital admissions per 100,000 resident population due to accidental poisoning in children aged 0-4 years.

	2014/15-16/17	2015/16-17/18	2016/17-18/19	2017/18-19/20
Bolton	230.6	205.1	171.5	129.5
NW	217.5	204.8	196.6	180.3
England	145.5	136.1	126.6	118.2

## Teenage Mothers

Percentage of delivery episodes, where the mother is aged under 18 years.

	2016/17	2017/18	2018/19	2019/20
Bolton	0.7%	0.6%	0.9%	0.8%
NW	0.9%	0.9%	0.8%	0.8%
England	0.8%	0.7%	0.6%	0.7%



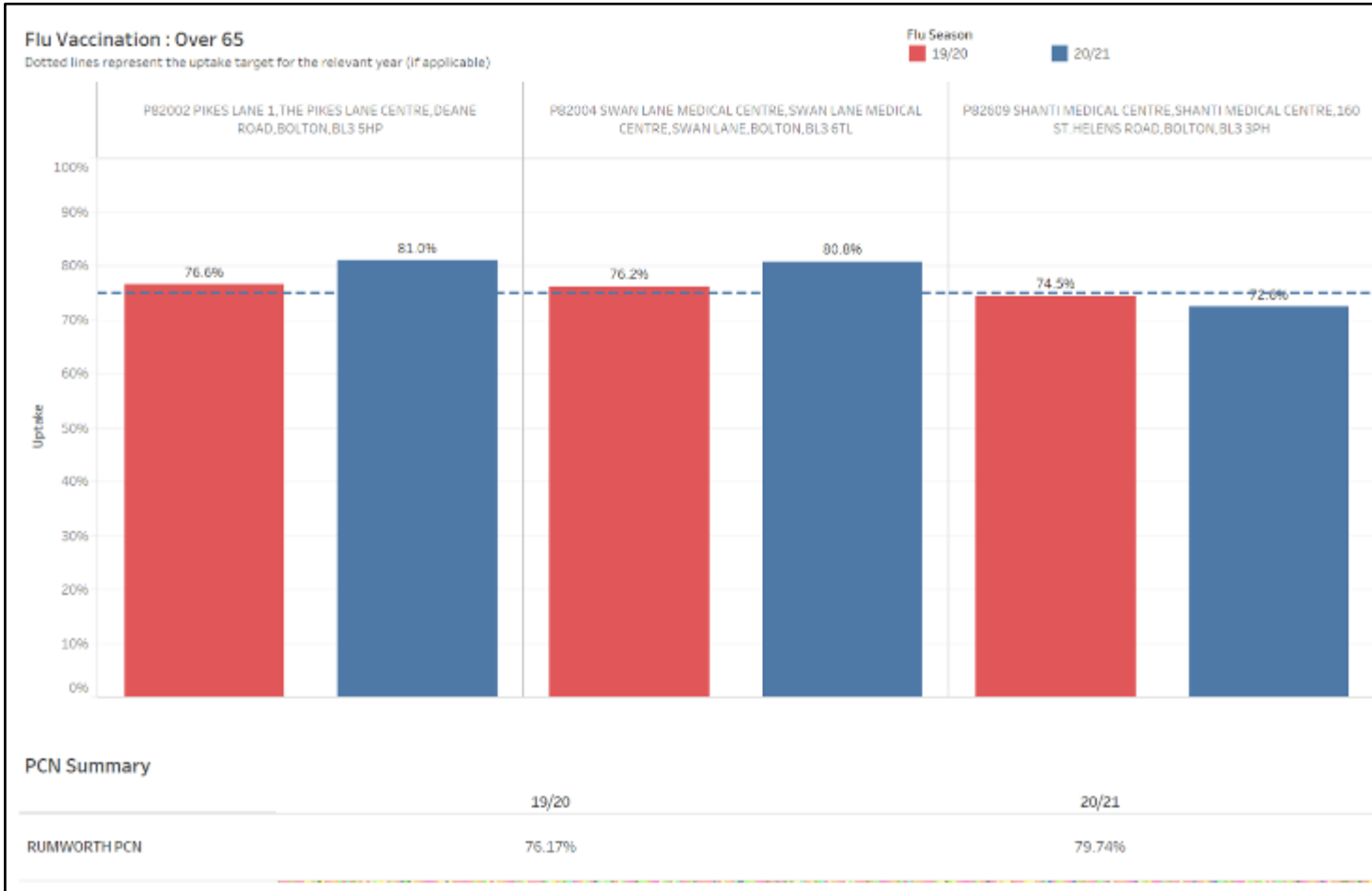
## 7.2 Immunisation





# Flu Vaccination: 65 & Over

Data Source: GM HSCP



**2019/20 Flu Season:** Rumworth PCN 65 & over vaccination uptake was 76.17%.

2 practices met the 75% vaccination target in 2019/20.

**2020/21 Flu Season:** Vaccine uptake increased slightly with an overall rate for the PCN of 79.74%.

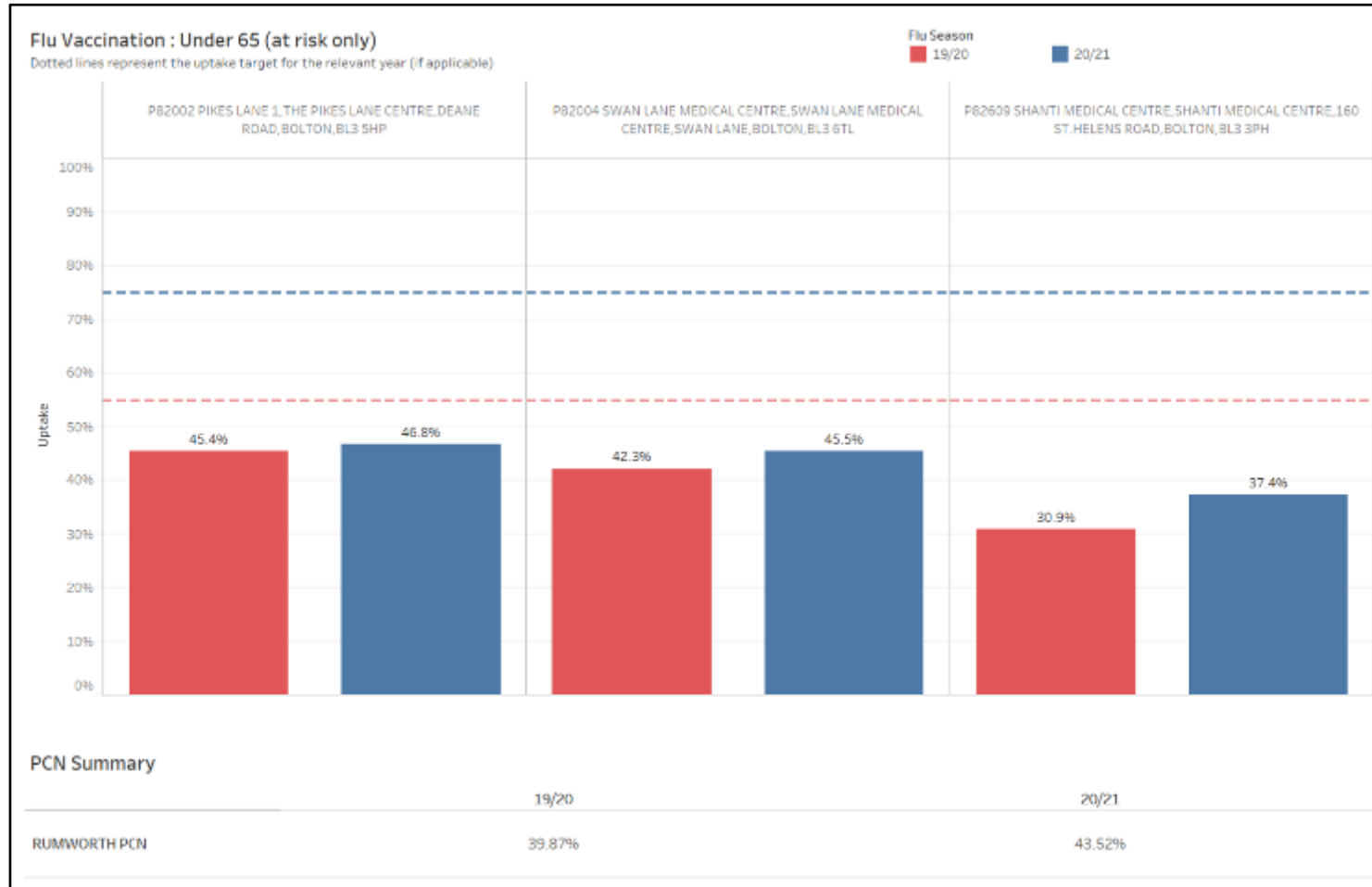
2 practices met the 75% vaccination target in 2020/21.

Data not available via GM HSCP for P82009 - St Helens Road Practice



# Flu Vaccination: Under 65 (at risk only)

Data Source: GM HSCP



**2019/20 Flu Season:** Rumworth PCN's under 65 at risk only vaccination uptake was 39.87%.

No practices reached the 55% uptake target in 2019/20.

**2020/21 Flu Season:** Rumworth PCN's under 65 at risk only vaccination uptake increased slightly to 43.52%.

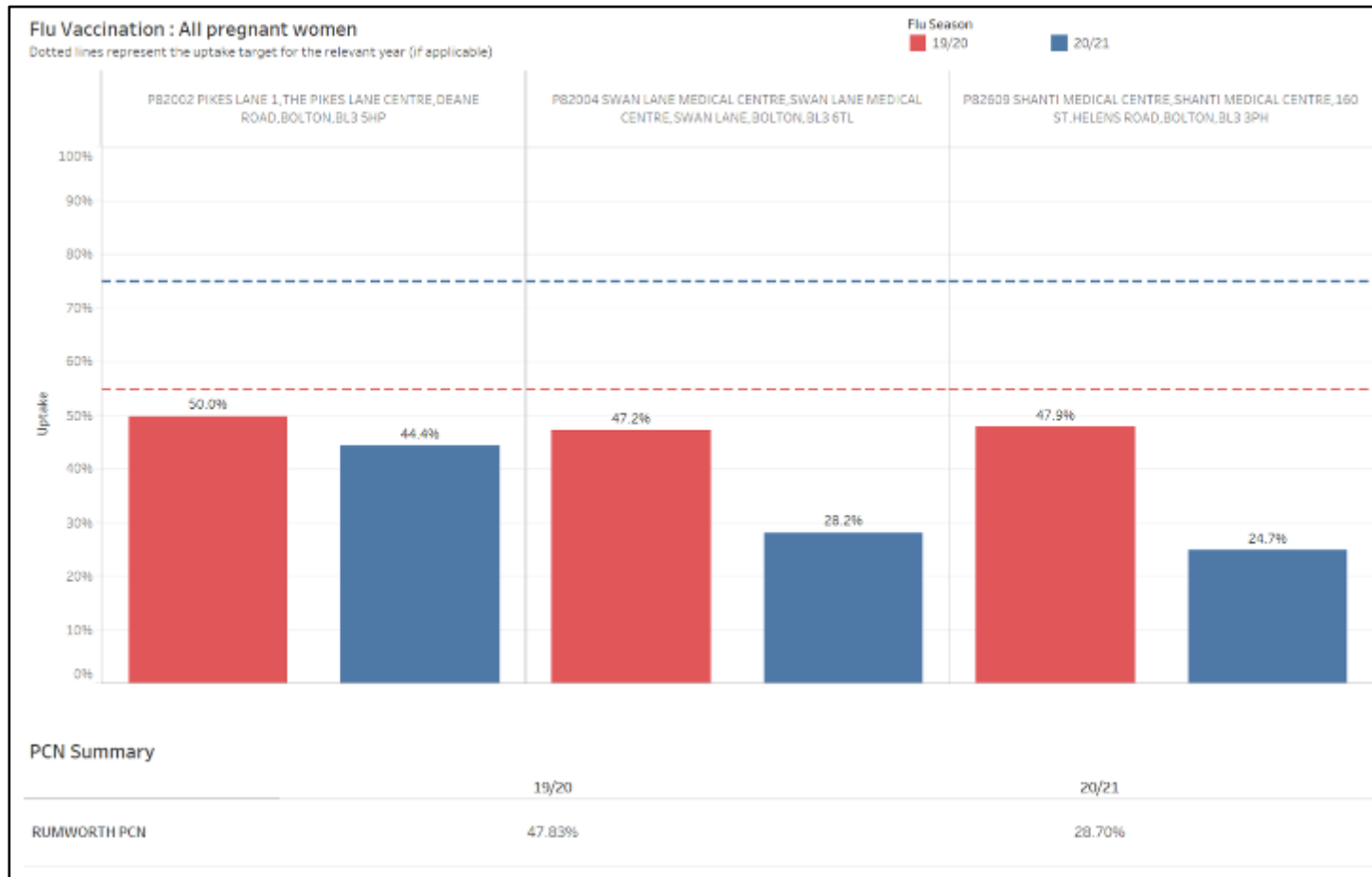
However, no practices reached the revised target of 75% in 2020/21.

Data not available via GM HSCP for P82009 - St Helens Road Practice



# Flu Vaccination: All Pregnant Women

Data Source: GM HSCP



**2019/20 Flu Season:** Rumworth PCN's all pregnant women vaccination uptake was 47.83%.

No practices reached the 55% uptake target in 2019/20.

**2020/21 Flu Season:** Uptake across the PCN was 28.70%, lower than that of the previous year.

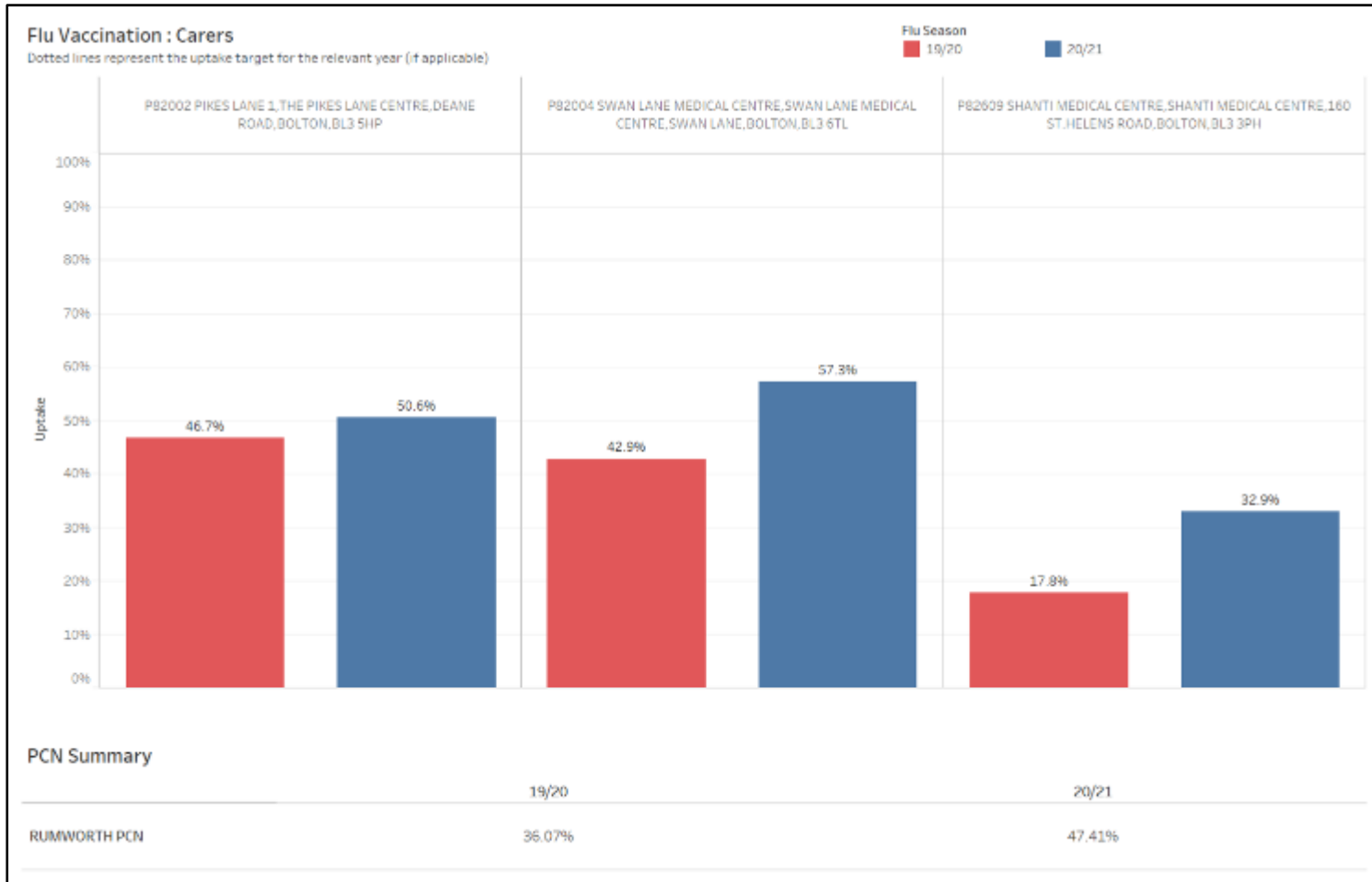
No practices reached the revised 75% uptake target in 2020/21.

Data not available via GM HSCP for P82009 - St Helens Road Practice



# Flu Vaccination: Carers

Data Source: GM HSCP



**2019/20 Flu Season:** Rumworth PCN's carers vaccination uptake was 36.07%.

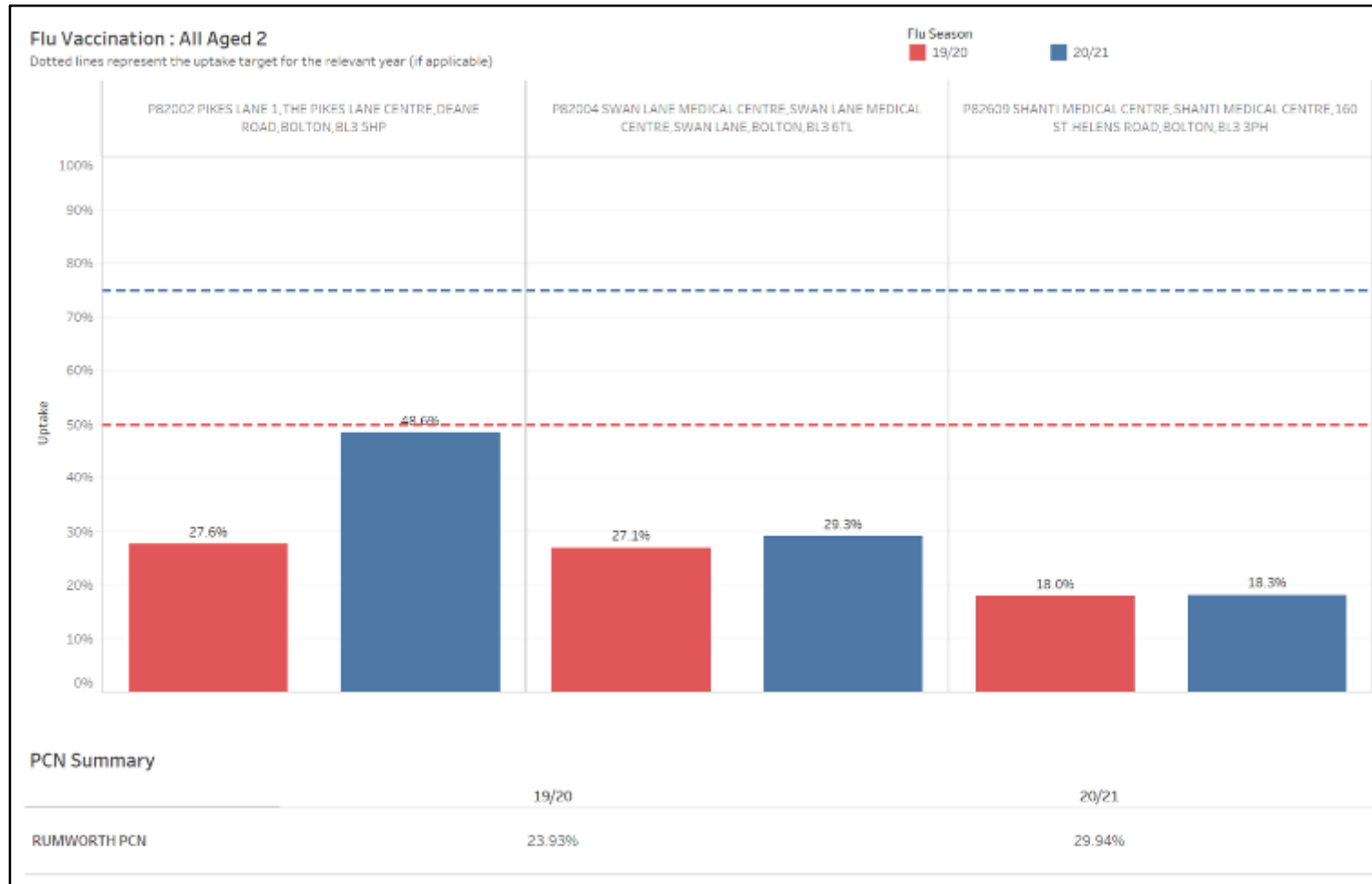
**2020/21 Flu Season:** Uptake was 47.41%, an increase from that of the previous year.

Data not available via GM HSCP for P82009 - St Helens Road Practice



# Flu Vaccination: All Aged 2

Data Source: GM HSCP



**2019/20 Flu Season:** Rumworth PCN's all aged 2 vaccination uptake was 23.93%.

No practices reached the target of 50% in 2019/20.

**2020/21 Flu Season:** Uptake was of a higher than that of the previous year across the PCN with a rate of 29.94%.

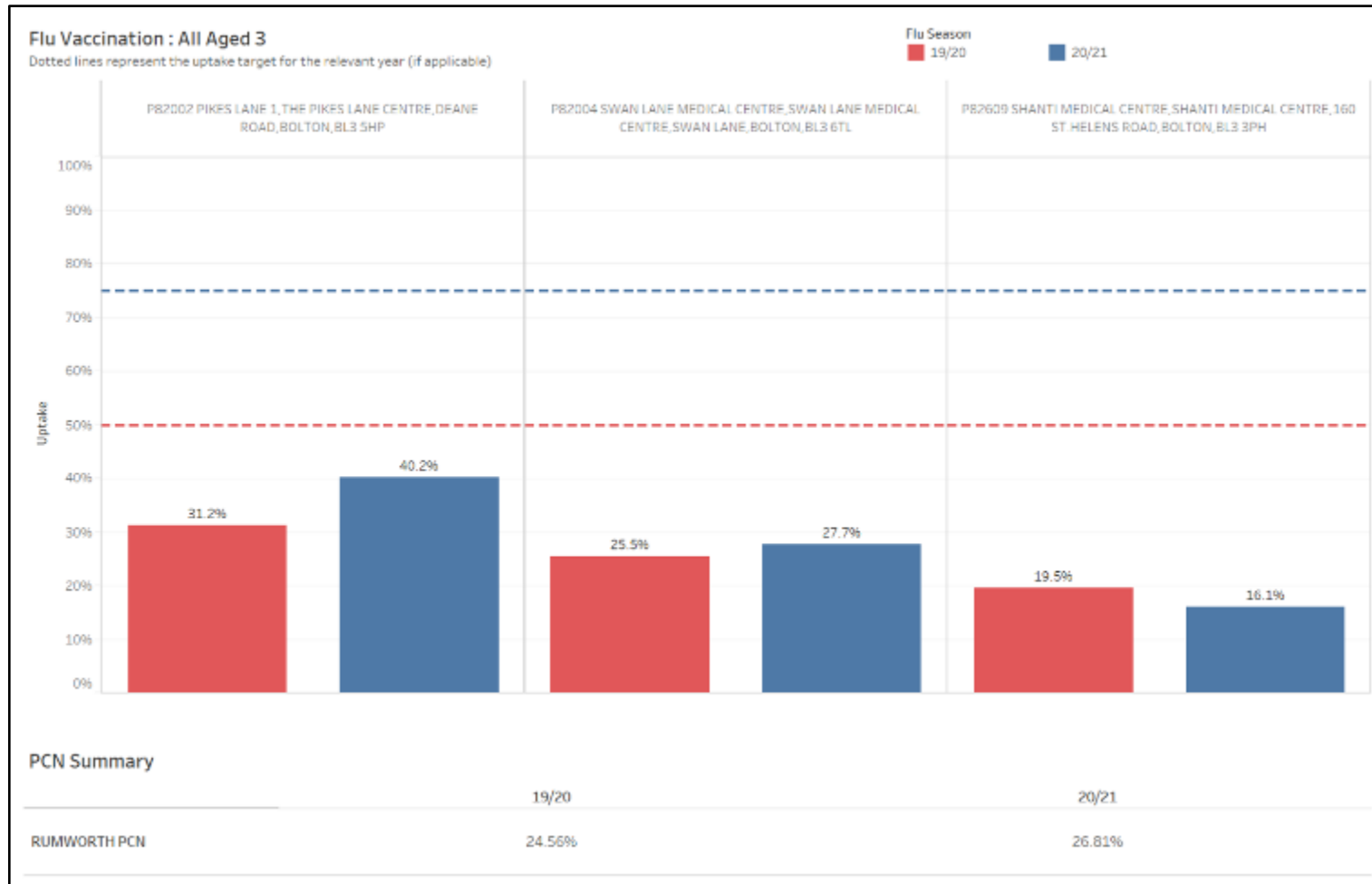
However, no practices reached the revised 75% uptake target in 2020/21.

Data not available via GM HSCP for P82009 - St Helens Road Practice



# Flu Vaccination: All Aged 3

Data Source: GM HSCP



**2019/20 Flu Season:** Rumworth PCN's all aged 3 vaccination uptake was 24.56%.

No practices reached the target of 50% in 2019/20.

**2020/21 Flu Season:** Uptake was of a similar level across the PCN at 26.81%.

No practices reached the revised 75% uptake target in 2020/21

Data not available via GM HSCP for P82009 - St Helens Road Practice





# Child Immunisations Up to Five Years of Age (GP)

Data Source: Child Health Information Systems, Public Health England, 2019/20

Expectation in the UK is that there is 95% coverage of all routine childhood immunisations for those up to five years of age (BMA, 2020).

**6-in-1 Vaccine**  
3 doses at 8,12 & 16 weeks

**Data Measure**  
% of children who received 3 doses of the 6-in-1 vaccine by their 1<sup>st</sup> birthday.

6-in-1 Vaccine	% Vaccinated
Westhoughton Network	98.00%
Horwich Network	96.88%
Turton	96.59%
Brightmet & Little Lever	95.81%
HWL Network	95.08%
Chorley Roads Network	94.18%
Farnworth & Kearsley	93.81%
<b>Rumworth</b>	<b>92.86%</b>
Bolton Central	90.39%
GM Average	93.47%
England Average	92.57%

**Hib/ MenC Booster**  
1 dose at 1 year

**Data Measure**  
% of children who received 1 dose of the Hib/ MenC booster (or 1 dose of the 6-in-1 vaccine and 1 dose of MenC) on or after their 1<sup>st</sup> birthday, up to their 2<sup>nd</sup> birthday.

Hib/MenC	% Vaccinated
Westhoughton Network	96.76%
Turton	96.43%
Farnworth & Kearsley	94.44%
Chorley Roads Network	93.99%
HWL Network	93.94%
Brightmet & Little Lever	93.60%
Horwich Network	92.94%
<b>Rumworth</b>	<b>91.33%</b>
Bolton Central	90.46%
GM Average	91.03%
England Average	90.56%

**4-in-1 Preschool Booster Vaccine**  
1 dose from 3 years & 4 months

**Data Measure**  
% of children who received a 4<sup>th</sup> dose of a diphtheria, tetanus, pertussis & polio containing vaccine given from 3 years & 4 months and before their 5<sup>th</sup> birthday.

4-in-1 Vaccine	% Vaccinated
Westhoughton Network	95.10%
Turton	92.16%
Brightmet & Little Lever	90.65%
Chorley Roads Network	89.23%
HWL Network	88.61%
Horwich Network	88.43%
<b>Rumworth</b>	<b>87.80%</b>
Farnworth & Kearsley	86.57%
Bolton Central	81.27%
GM Average	58.00%*
England Average	84.00%

\* Bury, Oldham, HMR and Trafford CCGs reported very low vaccination numbers



# Child Immunisations Up to 5 Years of Age (GP)

Utilisation Management Unit

Data Source: Child Health Information Systems, Public Health England, 2019/20

Expectation in the UK is that there is 95% coverage of all routine childhood immunisations for those up to five years of age (BMA, 2020).

**Pneumococcal (PCV) Vaccine**  
 For babies born before 1<sup>st</sup> January 2020: 2 doses at 8 & 16 weeks  
 For babies born after 1<sup>st</sup> January 2020: 1 dose at 12 weeks

**Pneumococcal (PCV) Booster Vaccine**  
 1 dose at 1 year

**Data Measure**  
 % of children who received 2 doses of the Pneumococcal vaccine before their 1<sup>st</sup> birthday.

**Data Measure**  
 % of children who received 1 dose of the Pneumococcal booster on or after their 1<sup>st</sup> birthday, up to their 2<sup>nd</sup> birthday.

PCV Vaccine	% Vaccinated
Westhoughton Network	98.00%
Turton	97.50%
Horwich Network	97.40%
HWL Network	96.39%
Brightmet & Little Lever	96.31%
Chorley Roads Network	95.24%
Farnworth & Kearsley	94.76%
Rumworth	93.41%
Bolton Central	92.58%
GM Average	94.95%
England Average	93.34%

PCV Booster	% Vaccinated
Westhoughton Network	96.76%
Turton	96.01%
Farnworth & Kearsley	94.44%
HWL Network	93.60%
Chorley Roads Network	93.21%
Brightmet & Little Lever	93.13%
Horwich Network	92.65%
Rumworth	91.07%
Bolton Central	87.90%
GM Average	94.95%
England Average	93.34%



# Child Immunisations Up to Five Years of Age (GP)

Utilisation Management Unit

Data Source: Child Health Information Systems, Public Health England, 2019/20

Expectation in the UK is that there is 95% coverage of all routine childhood immunisations for those up to five years of age (BMA, 2020).

**Rotavirus Vaccine**  
2 doses at 8 & 12 weeks

**MenB Vaccine**  
3 doses at 8 & 16 weeks and 1 year

**Data Measure**  
% of children who received 2 doses of the Rotavirus vaccine before 24 weeks of age.

**Data Measure**  
% of children who received 2 doses of the MenB vaccine by their 1<sup>st</sup> birthday.

Rotavirus	% Vaccinated
Turton	95.68%
Westhoughton Network	95.20%
Farnworth & Kearsley	92.62%
Brightmet & Little Lever	92.61%
Horwich Network	92.45%
<b>Rumworth</b>	<b>89.84%</b>
Chorley Roads Network	89.42%
HWL Network	87.21%
Bolton Central	82.53%
GM Average	90.86%
England Average	90.25%

MenB Vaccine	% Vaccinated
Westhoughton Network	98.00%
Turton	97.27%
Brightmet & Little Lever	96.06%
Horwich Network	95.83%
HWL Network	95.74%
Farnworth & Kearsley	94.29%
Chorley Roads Network	94.18%
<b>Rumworth</b>	<b>92.86%</b>
Bolton Central	90.54%
GM Average	94.28%
England Average	92.58%



# Child Immunisations Up to Five Years of Age (GP)

Utilisation Management Unit

Data Source: Child Health Information Systems, Public Health England, 2019/20

Expectation in the UK is that there is 95% coverage of all routine childhood immunisations for those up to five years of age (BMA, 2020).

**MMR Vaccine**  
1<sup>st</sup> dose at 1 year

**MMR Vaccine**  
2<sup>nd</sup> dose at 3 years & 4 months

**Data Measure**  
% of children who received 1 dose of the MMR vaccine on or after their 1<sup>st</sup> birthday up to their 2<sup>nd</sup> birthday.

**Data Measure**  
% of children who received 2 doses of the MMR vaccine by their 5<sup>th</sup> birthday (where the 1<sup>st</sup> dose was given on or after their 1<sup>st</sup> birthday).

MMR 1 <sup>st</sup> dose	% Vaccinated
Westhoughton Network	97.48%
Turton	96.43%
Chorley Roads Network	95.82%
Brightmet & Little Lever	94.08%
Farnworth & Kearsley	93.98%
Horwich Network	93.82%
HWL Network	93.27%
Bolton Central	92.20%
Rumworth	91.33%
GM Average	92.45%
England Average	90.68%

MMR 1 <sup>st</sup> & 2 <sup>nd</sup> dose	% Vaccinated
Westhoughton Network	96.50%
Turton	94.23%
Chorley Roads Network	92.11%
Brightmet & Little Lever	91.76%
Rumworth	91.72%
HWL Network	90.19%
Horwich Network	90.05%
Farnworth & Kearsley	87.60%
Bolton Central	84.75%
GM Average	88.82%
England Average	86.93%



## 7.3 Cancer Screening



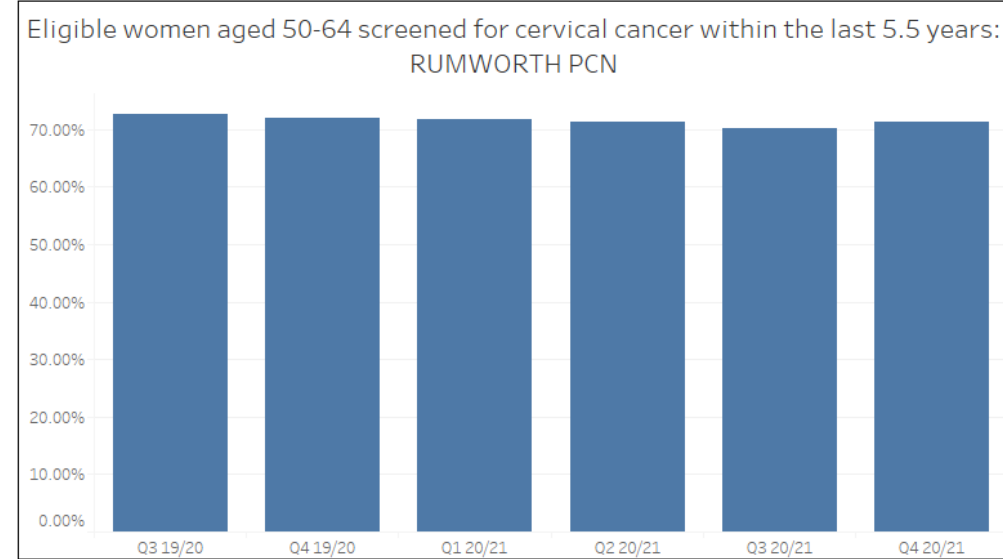
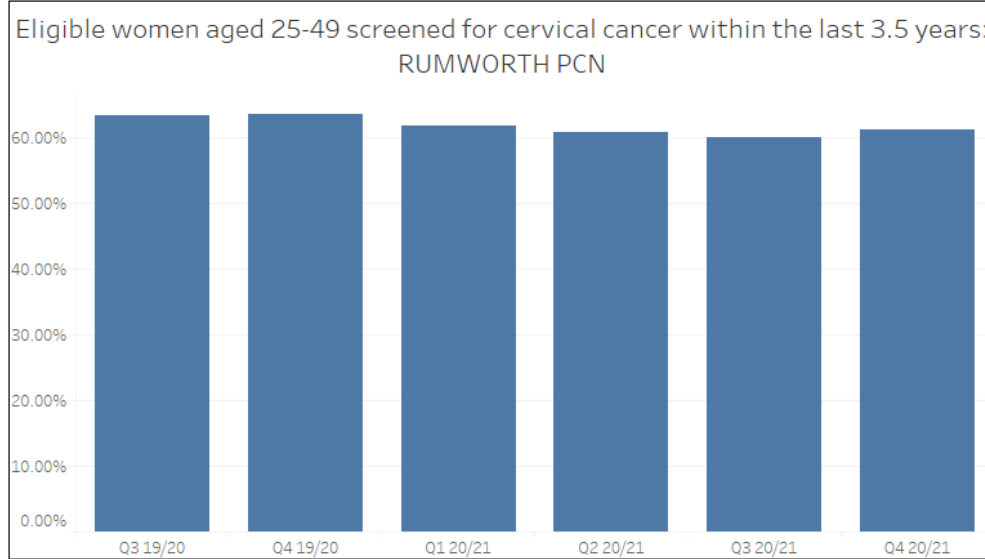
# Cervical Cancer Screening

Data Source: Public Health England, Q3 2019/20 to Q1 2020/21



Acceptable threshold i.e. lowest level of performance screening services are expected to attain = 80% (PHE, 2020)

Utilisation Management Unit



	Q3 19/20	Q4 19/20	Q1 20/21	Q2 20/21	Q3 20/21	Q4 20/21
RUMWORTH PCN	63.26%	63.40%	61.72%	60.74%	59.86%	61.02%
NHS BOLTON CCG	71.12%	71.62%	70.00%	68.71%	68.57%	69.61%
GM	71.13%	71.39%	69.74%	68.41%	67.97%	68.81%
England	70.64%	70.90%	69.34%	68.29%	68.09%	68.88%

	Q3 19/20	Q4 19/20	Q1 20/21	Q2 20/21	Q3 20/21	Q4 20/21
RUMWORTH PCN	72.57%	71.84%	71.66%	71.33%	70.15%	71.20%
NHS BOLTON CCG	77.01%	76.93%	76.38%	75.86%	75.17%	75.17%
GM	76.01%	76.01%	75.40%	74.70%	74.26%	74.22%
England	76.37%	76.33%	75.80%	75.28%	74.99%	74.96%



# Breast and Bowel Cancer Screening



## Breast

Data were only locatable by Local Authority

NHS Breast Screening Programme: Coverage of women aged 53 - <71 by Local Authority, as at 31st March sourced from NHS Digital

PHE (2020);

Acceptable (lowest) threshold = 70%

Achievable (aspire to) threshold = 80%

	2019	2020
<b>Bolton</b>	73.22%	74.68%
<b>GM</b>	71.51%	70.17%
<b>England</b>	74.58%	74.17%



## Bowel

Data were only locatable by CCG

The proportion of men and women aged 60 to 74 invited to participate in bowel cancer screening who adequately participate, sourced from Public Health England

PHE (2020);

Acceptable (lowest) threshold = 52%

Achievable (aspire to) threshold = 60%

	Q2 2020/21	Q3 2020/21	Q4 2020/21
<b>Bolton CCG</b>	65.20%	65.34%	68.78%
<b>GM</b>	64.91%	65.99%	69.50%
<b>England</b>	68.68%	68.97%	71.04%

Note: Whilst data was collected for Q1 2020/21 it was reportedly withdrawn due to low numbers at the beginning of the pandemic



## 7.4 Early Years





# Early Years Milestones



New birth visits

Proportion of infants receiving a new birth visit by a Health Visitor within 14 days of birth.

	2018/ 2019	2019/ 2020
Bolton	92.2%	*
NW	87.9%	87.3%
England	88.8%	86.8%



Breastfeeding at 6-8 weeks

Percentage of infants that are totally or partially breastfed at age 6-8 weeks.

	2018/ 2019	2019/ 2020
Bolton	41.1%	*
NW	38.9%	*
England	46.2%	48.0%



6-8 week reviews

Proportion of infants who received a 6-8 weeks review by the time they were 8 weeks old.

	2018/ 2019	2019/ 2020
Bolton	94.1%	*
NW	88.2%	85.9%
England	85.4%	85.1%



12-month reviews

Proportion of children who received a 12-month development review by the time they turned 15 months.

	2018/ 2019	2019/ 2020
Bolton	92.6%	*
NW	88.2%	88.5%
England	82.3%	83.6%



2- 2½ year reviews

Proportion of children who received a 2- 2½ year review by the time they turned 2½ years.

	2018/ 2019	2019/ 2020
Bolton	95.5%	*
NW	83.3%	82.6%
England	77.6%	78.6%

\* Value suppressed due to incompleteness of source data

Data Source: Fingertips, Public Health England



# 08

---

## Wider Determinants of Health



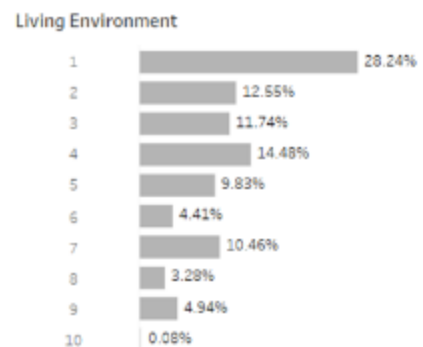
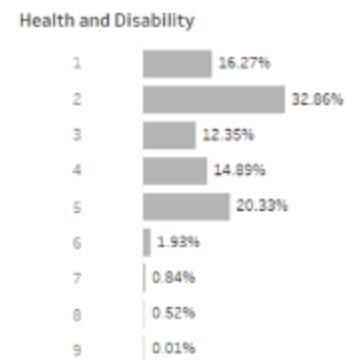
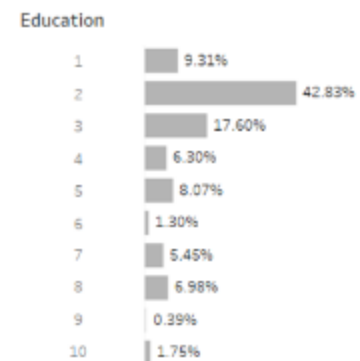
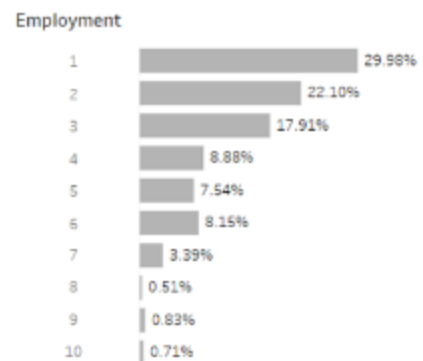
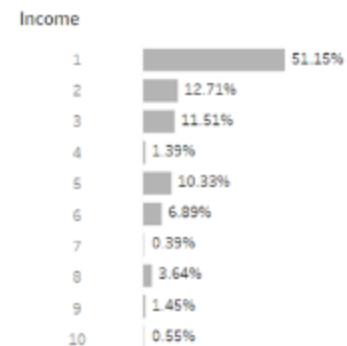
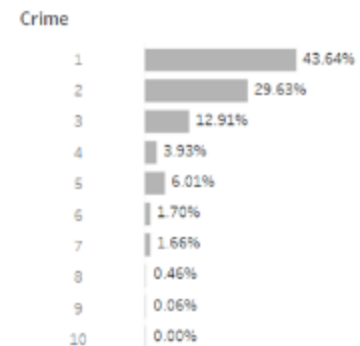
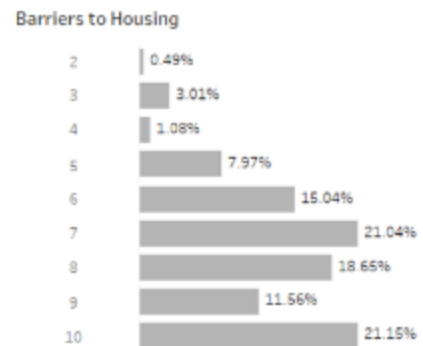
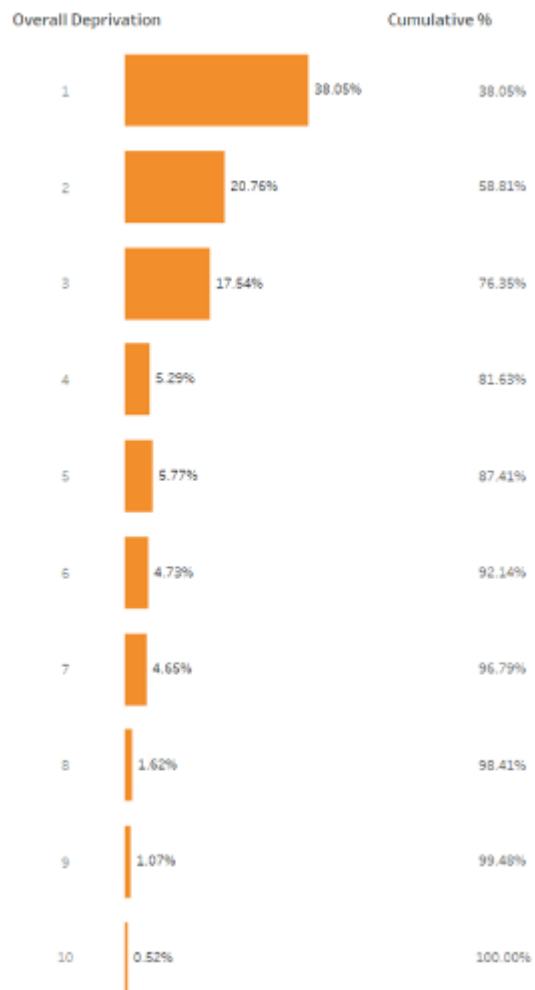


# Index of Multiple Deprivation (IMD)

## Utilisation Management Unit

### PCN population Deprivation Deciles

Charts show % of population in each decile. Decile 1=highest deprivation, decile 10=lowest deprivation.



*58.81% of the Rumworth PCN population live in the top 20% of most deprived LSOAs in England.*



# Income and Children

Children (under 16 years of age) in RELATIVE low income families

‘Relative’ defined as a family income which is less than 60% of the median average income.

	2018/19	2019/20
Bolton	32.2%	32.7%
NW	22.8%	22.6%
England	18.2%	19.1%

Free school meals percentage uptake of all pupils (state funded nursery, primary, secondary or special school)

	2017	2018
Bolton	16.1%	15.8%
NW	16.1%	16.0%
England	13.9%	13.5%



# Looked After Children

Rate per 10,000 resident population aged under 18 years

	Bolton	North West	England
2011	83	77	59
2012	80	76	59
2013	83	79	60
2014	80	81	60
2015	86	82	60
2016	84	82	60
2017	87	86	62
2018	91	91	64
2019	95	94	65
2020	92	97	67

Data Source: Fingertips, Public Health England



# Child Development Milestones

Percentage of children who received a 2-2½ year review who were at or above the expected level in the five Ages and Stages Questionnaire-3 domains

	Bolton	North West	England
2017/18	*	79.0%	83.3%
2018/19	66.4%	78.4%	92.9%
2019/20	*	82.2%	83.3%

\* Value suppressed due to incompleteness of source data

Percentage of children achieving at least the expected level of development in communication, language and literacy skills at the end of Reception (school readiness)

	Bolton	North West	England
2012/13	47.6%	55.6%	56.9%
2013/14	54.2%	61.0%	63.6%
2014/15	61.1%	65.8%	68.3%
2015/16	64.6%	68.1%	70.8%
2016/17	66.1%	69.0%	71.8%
2017/18	67.5%	69.8%	72.4%
2018/19	67.3%	69.7%	72.6%





# Air Pollution

Fine particulate matter (PM<sub>2.5</sub>) is comprised of particles with a diameter smaller than 2.5µm. Sources can be industrial, commercial and agricultural in nature; however, road transport remains the biggest contributor to urban pollution.

PM<sub>2.5</sub> can penetrate deep into the lungs and enter the blood stream. Exposure is associated with poor health outcomes from diseases, such as, asthma, COPD, lung cancer and coronary heart disease and impacts on low birth weight, diabetes and neurodegenerative diseases.

Whilst there are no established safe inhalation levels, the World Health Organisation (WHO) advocates a PM<sub>2.5</sub> annual limit of 10µg/m<sup>3</sup> as a starting point to encourage progressive reductions.

Whilst predicted annual average data from the British Lung Foundation (2018) suggest that Rumworth PCN practices are not located in areas which exceed WHO safe air pollution limits, it is acknowledged that actual PM<sub>2.5</sub> levels may be greater in some areas when taking into consideration short-term exposure to high levels of fine particulate matter by the side of busy roads.

Rumworth PCN	PM <sub>2.5</sub> (µg/m <sup>3</sup> )
Pikes Lane 1	8.53
Shanti Medical Centre	8.48
St Helens Road Practice	8.28
Swan Lane Medical Centre	8.48

Data and Information  
Source: British Lung  
Foundation, 2018



09

---

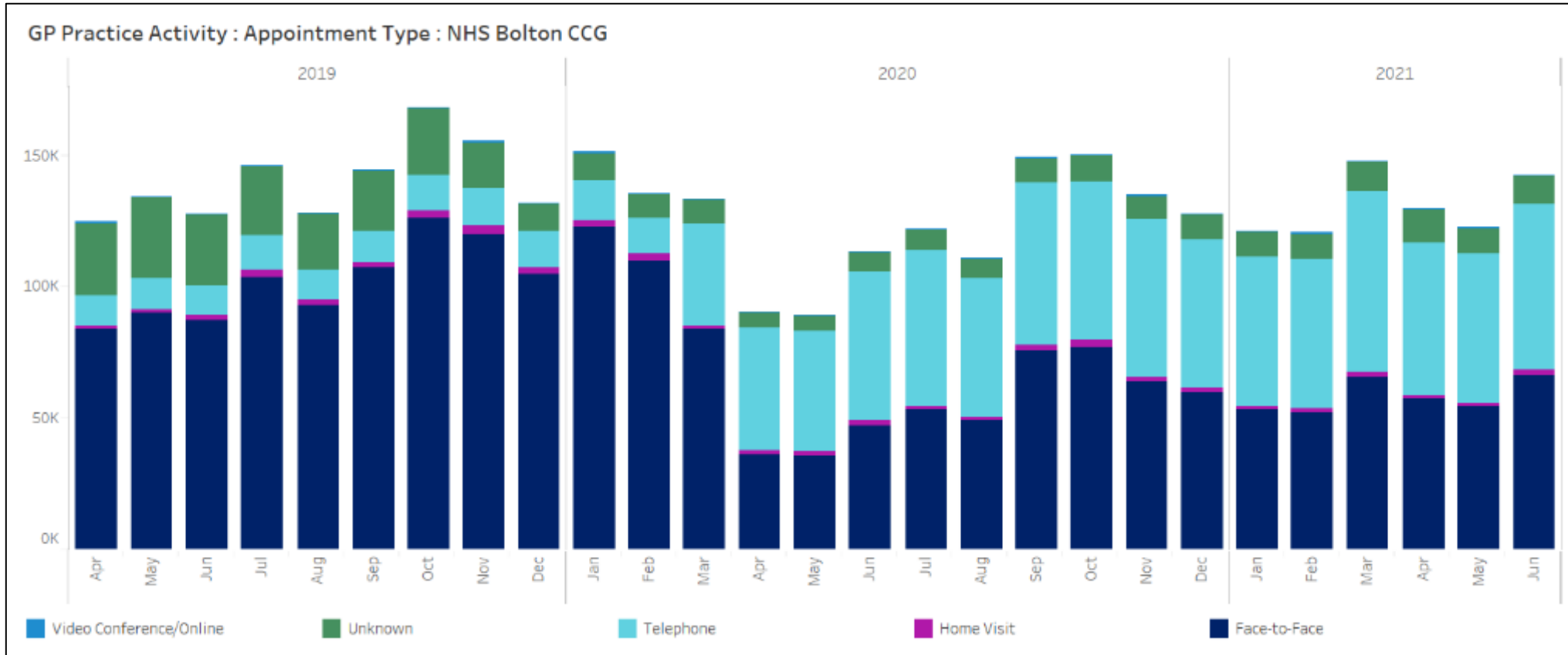
## GP Practice Activity







# GP Practice Activity: Appointment Type



Type of GP Appointment	2019/20	2020/21
Face to Face	73.31% (n=1,233,552)	45.30% (n=669,877)
Telephone Consultation	10.65% (n=179,279)	46.19% (n=682,964)
Home Visit	1.58% (n=26,593)	1.34% (n=19,844)
Video Consultation/Online	0.05% (n=764)	0.07% (n=1,063)
Unknown	14.41% (n=242,460)	7.10% (n=104,982)

*Total appointment numbers were 12% lower in 20/21 than in 19/20.*

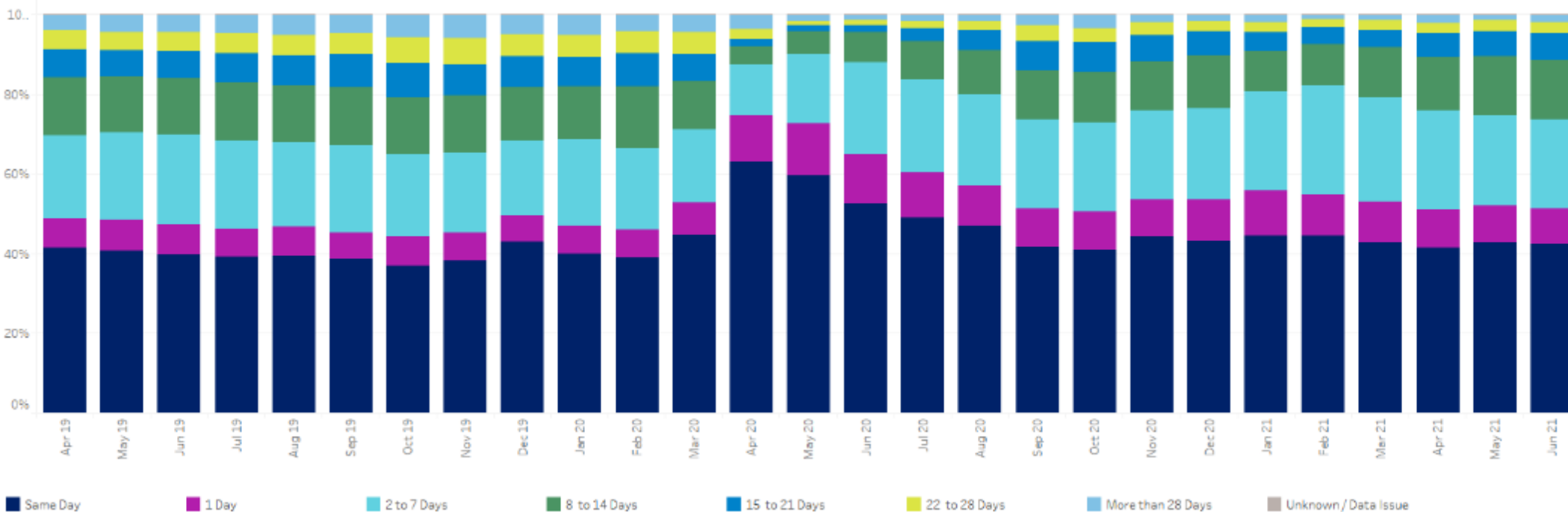
*Reduced face to face appointments and increased telephone consultations are attributable to the Covid 19 pandemic*



# GP Practice Activity: Time of Appointment

Utilisation Management Unit

GP Appointments by Time between Booking and Appointment Date: NHS Bolton CCG



Appointment Time Frame	2019/20	2020/21
Same Day	39.98% (n=672,805)	46.72% (n=690,916)
1 Day	7.18% (n=120,876)	10.57% (n=156,236)
2-7 Days	20.81% (n=350,180)	22.73% (n=336,114)
8-14 Days	14.09% (n=237,022)	10.57% (n=156,370)
15-21 Days	7.57% (n=127,396)	4.73% (n=69,877)
22-28 Days	5.40% (n=90,928)	2.52% (n=37,252)
> 28 Days	4.92% (n=82,750)	2.10% (n=31,100)
Unknown	0.04% (n=691)	0.06% (n=865)

*A higher proportion of appointments took place on the same day or the next day in 2020/21 than in 2019.20*

*Absolute numbers of same day and next day appointments also increased between the 2 financial years despite a 12% decrease in the total number of appointments.*

Data Source: GMHSCP



# 10

---

## Unplanned Hospital Activity





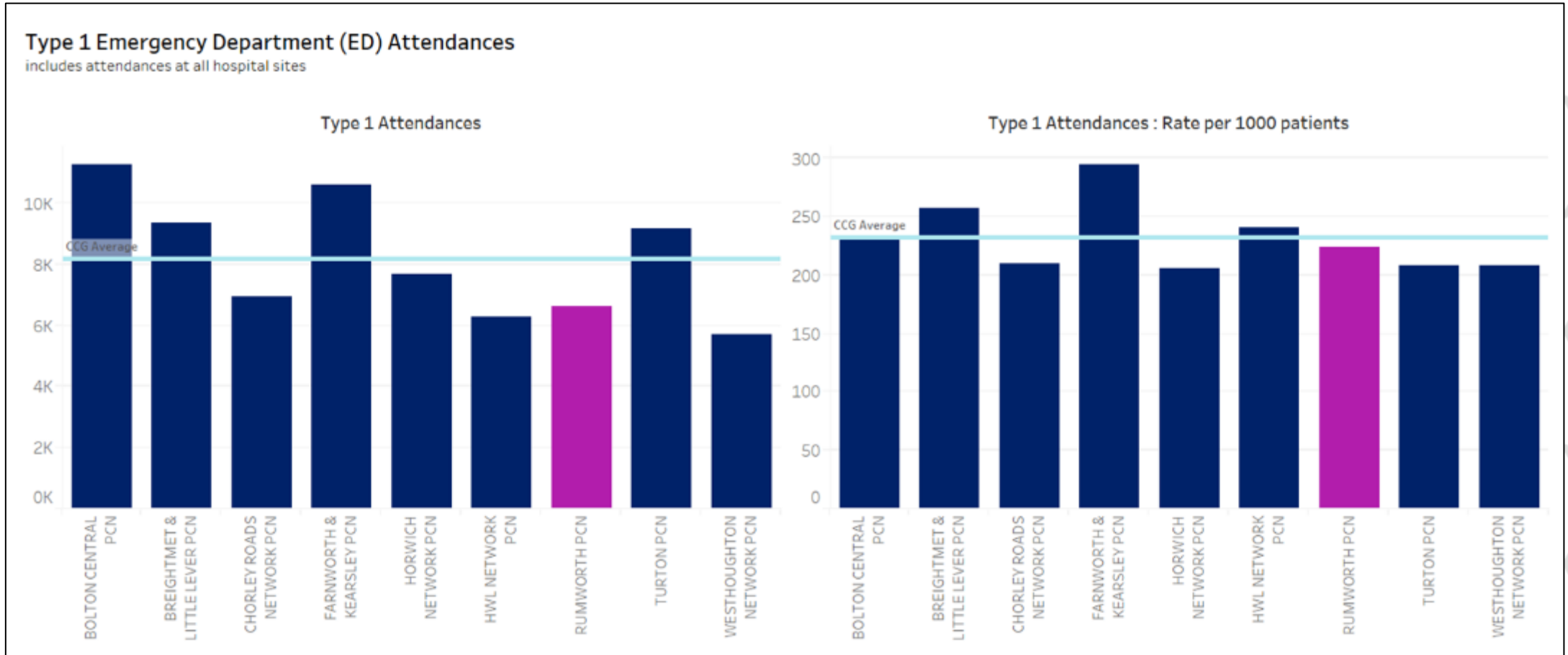
# 10.1 Total Activity



# Type 1 Emergency Department (ED) Attendances



Data Source: GMHSCP      Data Period: 2020/21



*The Rumworth PCN population generated 6,639 Type 1 ED attendances during financial year 2020/21.*

*This equates to an attendance rate of 224 per 1000 patients.*



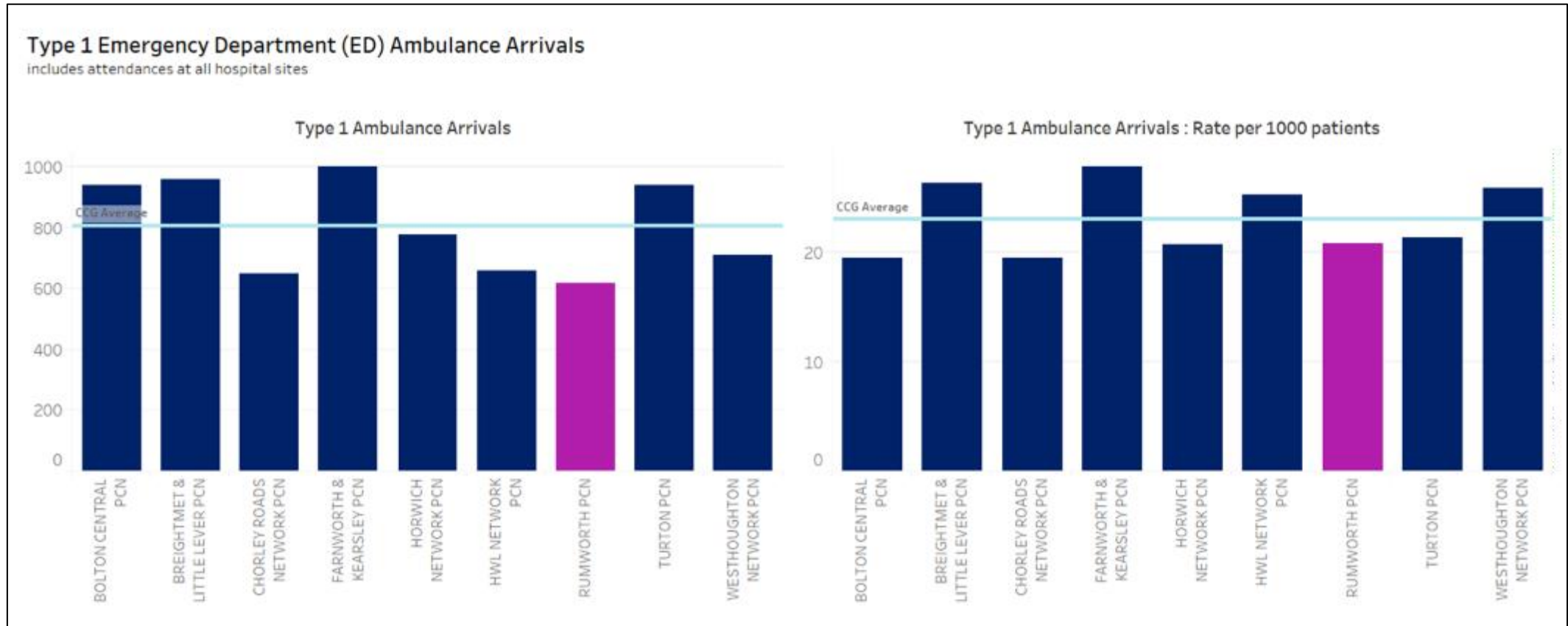
# Type 1 Emergency Department (ED) Ambulance Arrivals



Utilisation Management Unit

Data Source: GMHSCP

Data Period: 2020/21



*The Rumworth PCN population generated 621 ambulance arrivals during financial year 2020/21.*

*This equates to an ambulance arrival rate of 21 per 1000 patients.*



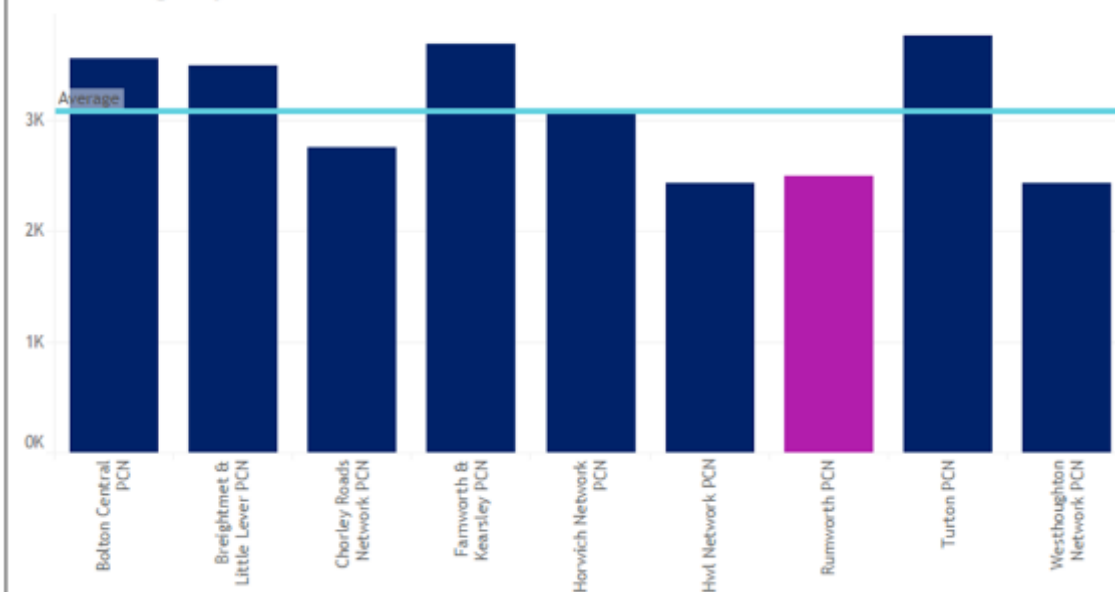
# Emergency Admissions

Data Source: GMHSCP

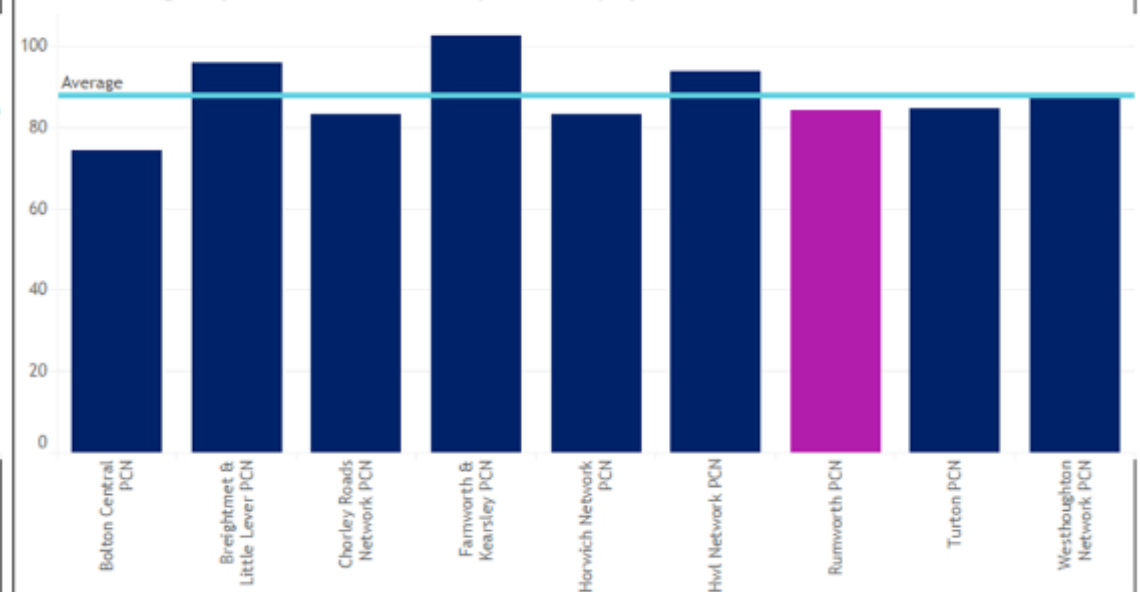
Data Period: 2020/21

**Total Emergency Admissions**  
includes admissions at all hospital sites

**Total Emergency Admissions**



**Total Emergency Admissions - Rate per 1000 population**

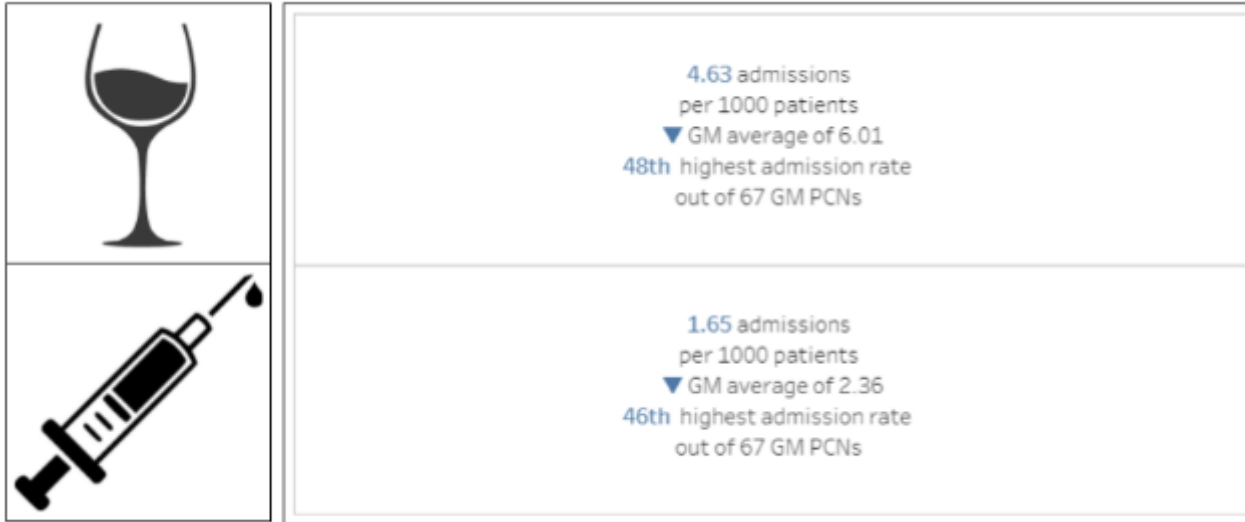


*The Rumworth PCN population generated 2,502 emergency admissions during financial year 2020/21.*

*This equates to an emergency admission rate of 84 per 1000 patients.*



# Alcohol and Drug Related Admissions



Data Source: GMHSCP PCN Dashboard  
 Data Period: April 2020 - March 2021  
 Note: Data include emergency admissions to all hospital sites

PCN	Alcohol Related Hospital Admissions (per 1000 population)	Drug Related Hospital Admissions (per 1000 population)
Bolton Central	3.39	2.79
Brightmet & Little Lever	6.06	2.04
Chorley Roads Network	3.88	1.21
Farnworth & Kearsley	7.35	2.21
Horwich Network	5.13	1.78
HWL Network	6.61	3.98
Rumworth	4.63	1.65
Turton	3.98	1.47
Westhoughton Network	4.77	0.76

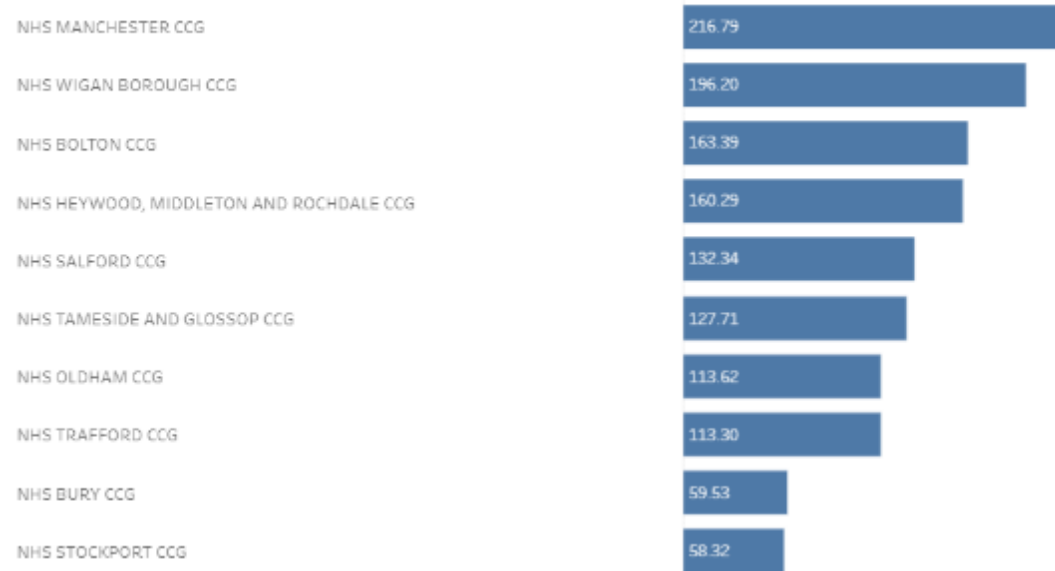




# Bolton Hospital Admissions with Covid-19 Diagnosis Code

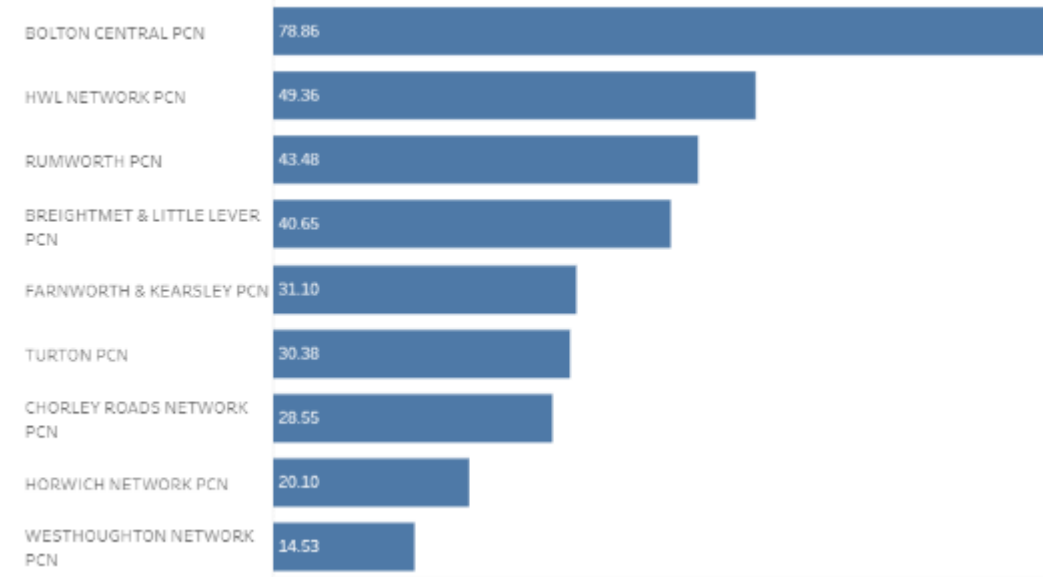
### Admission Rate per 1000 population by CCG

#### Admissions by CCG



### Admission Rate per 1000 population by Bolton PCNs

#### Admissions by PCN



*There were 3,339 Bolton hospital admissions with a Covid-19 diagnosis code, who were subsequently 'discharged' during the period, January 2020 to June 2021.*

*40% (n=1,329) died in hospital.*

*There were 394 Rumworth PCN hospital admissions with a Covid-19 diagnosis code, who were subsequently 'discharged' during the period, January 2020 to June 2021.*

*41% (n=163) died in hospital.*

Data Source: GMHSCP, 01/01/2020 - 30/06/2021

Note: Data include only those with a Covid-19 diagnosis code (U07.1 or U07.2) on **DISCHARGE**

Note: Data include emergency admissions to all hospital sites

*Whilst these data only provide a snapshot they demonstrate some of the health impact of the COVID-19 pandemic, specifically in terms of PCN level hospitalisations.*



## 10.2 Children's Activity



# Emergency Department and Emergency Admission Activity

Data Source: Fingertips, Public Health England



ED attendance rate per 1000 resident population  
Aged 0-17 years

	Bolton	NW	England
2011/12	371	430	365
2012/13	389	453	371
2013/14	375	436	370
2014/15	365	438	383
2015/16	367	474	405
2016/17	359	496	412
2017/18	361	491	410
2018/19	365	489	422



Emergency admission rate per 1000 resident population  
Under 18 years

	Bolton	NW	England
2011/12	112.4	*	70.8
2012/13	109.8	97.3	73.1
2013/14	105.1	93.7	72.2
2014/15	105.5	96.8	73.3
2015/16	101.3	99.5	75.5
2016/17	100.5	100.8	75.8
2017/18	98.7	102.3	75.3
2018/19	98.1	107.5	77.9
2019/20	95.2	102.2	75.2

\* Not published, reason not provided



# Emergency Admissions: Asthma

Emergency admissions due to asthma

Rate per 100,000 resident population, aged 0-9 years

	Bolton	NW	England
2011/12	477	436	271
2012/13	419	483	308
2013/14	320	406	260
2014/15	343	457	280
2015/16	312	426	260
2016/17	372	377	256
2017/18	343	345	230
2018/19	318	322	220
2019/20	280	271	192

Emergency admissions due to asthma

Rate per 100,000 resident population, aged 10-18 years

	Bolton	NW	England
2011/12	139.2	153.7	108.3
2012/13	161.9	168.7	122.0
2013/14	158.4	167.1	122.0
2014/15	159.7	194.3	138.7
2015/16	191.8	186.0	132.0
2016/17	143.4	176.1	137.6
2017/18	158.1	198.6	133.7
2018/19	125.6	178.8	127.9
2019/20	154.5	170.3	123.4



# Mental Health Related Emergency Admissions

Emergency admissions for mental health disorders per 100,000 resident population, aged under 18 years

	Bolton	NW	England
2017/18	99.4	105.6	84.7
2018/19	88.7	104.3	88.3
2019/20	80.4	111.3	89.5

Emergency admissions due to self harm per 100,000 resident population, aged 10-14 years

	Bolton	NW	England
2017/18	151.5	313.5	210.4
2018/19	136.3	329.9	226.3
2019/20	133.1	326.8	219.8

Emergency admissions due to self harm per 100,000 resident population, aged 15-19 years

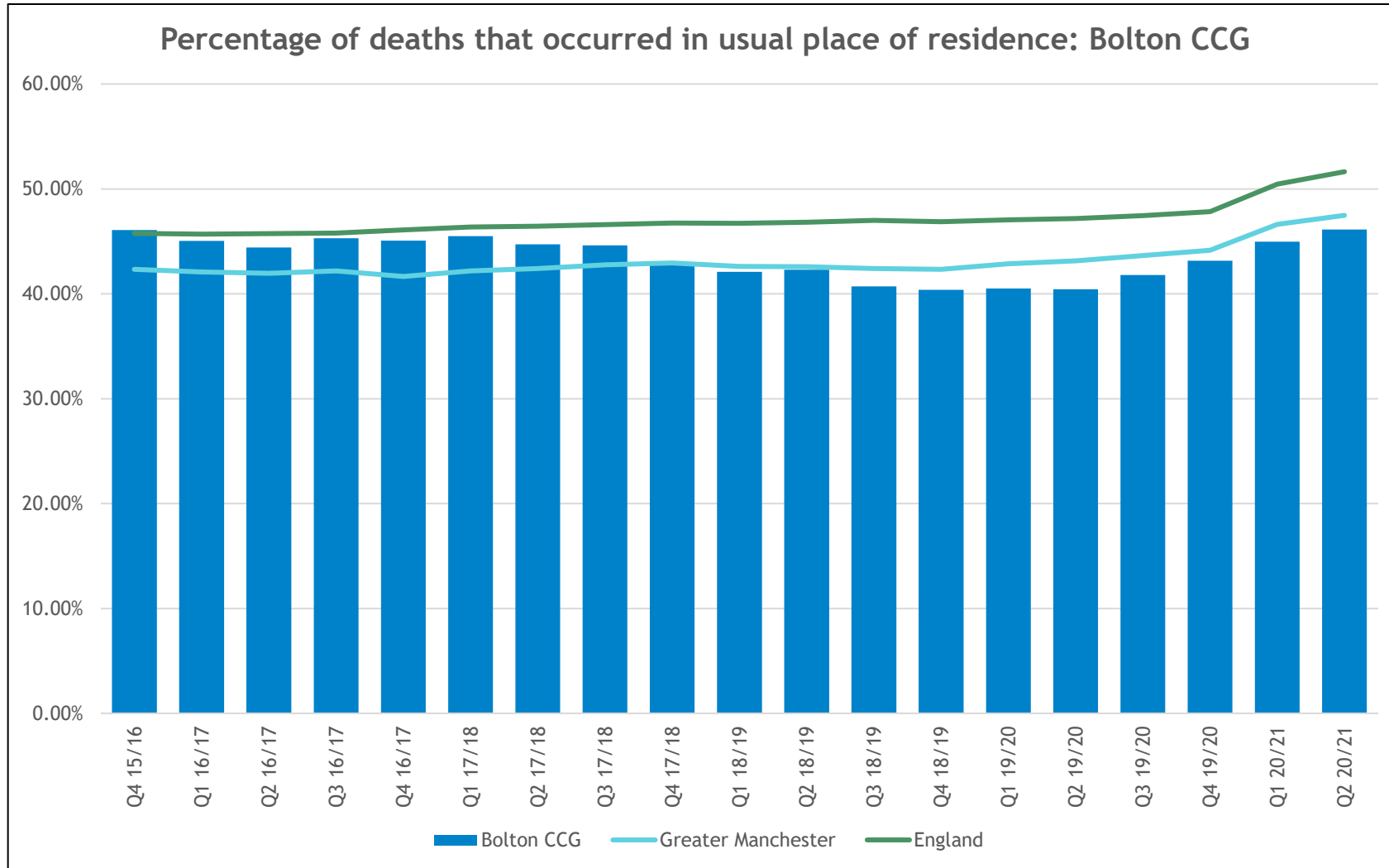
	Bolton	NW	England
2017/18	609.4	706.7	648.6
2018/19	511.6	730.4	659.5
2019/20	512.4	744.3	664.7



## 10.3 End of Life



# Deaths in Usual Place of Residence



Data Source: ONS

Figures are for the 12 month rolling period to the end of the listed quarter



# 11

---



## Summary





# Summary

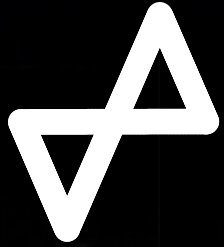
Utilising the data that are currently available it is not possible to comprehensively establish the nature, level and drivers of health inequalities across the nine Bolton PCNs.

Health outcome data do not appear to be available on a PCN footprint.

Whilst rich information is likely available at individual GP practice level, PCN aggregated and linked datasets are not accessible (for secondary use) to provide actionable insight into which communities and individuals to target, engage and work with where;

- Comparatively high disease prevalence exists.
- There are opportunities for life style interventions.
- There is overutilisation of unplanned services, such as, NHS 111 and ED, and underutilisation of preventative services, such as, annual health reviews and checks, immunisation and cancer screening.

Or to scrutinise practice level activity in order to identify, understand and reduce any unwarranted variation.



Health  
Innovation  
Manchester



Utilisation Management Unit

## Thank you

---

Clinical Contact: Debbie Atkinson RN (Adult)  
Clinical Development Lead  
Email: [debbie.atkinson3@nhs.net](mailto:debbie.atkinson3@nhs.net)

Analytical Contact: Sarah Fretwell  
Analytical Manager  
Email: [sarah.fretwell@nhs.net](mailto:sarah.fretwell@nhs.net)



DISCOVER



IMPROVE



EVALUATE



CHANGE