



Health  
Innovation  
Manchester



Utilisation Management Unit

# HEALTH INEQUALITIES DATA REPORT

---

THE GAP MIND THE GAP MIND THE GAP MIND THE GAP MIND T

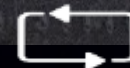
Bolton Central Primary Care Network  
September 2021



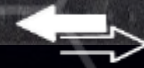
DISCOVER



IMPROVE



EVALUATE



CHANGE



<b>Document Title</b>	Health Inequalities Data Report: Bolton Central Primary Care Network	
<b>Report requested by</b>	Janet Castrogiovanni Managing Director Greater Manchester Primary Care Board (PCB)	
<b>Author</b>	Sarah Fretwell Analytical Manager  The Utilisation Management Unit Part of Health Innovation Manchester Suite C, Third Floor Citylabs, Nelson Street Manchester, M13 9NQ Email: <a href="mailto:sarah.fretwell@nhs.net">sarah.fretwell@nhs.net</a>	
<b>Data Analysis</b>	Sarah Fretwell Analytical Manager  The Utilisation Management Unit Part of Health Innovation Manchester	Paul White Senior Primary Care Analyst  Greater Manchester Health and Social Care Partnership
<b>Declaration of Interests</b>	None  <i>The UM Unit is part of Health Innovation Manchester which is hosted by Manchester University NHS Foundation Trust (MFT). Health Innovation Manchester accesses the human resources and finance functions within MFT but has its own corporate governance structures that report directly to the Health Innovation Manchester Board of Directors. This hosting arrangement enables the UM Unit to retain its independence and impartiality.</i>	
<b>Internal Review by</b>	Zoe Marsden Senior Information Analyst  The Utilisation Management Unit Part of Health Innovation Manchester	



# Contents

01

Introduction

02

Key Findings

03

PCN Overview

04

Population  
Demographics

05

Life Expectancy

06

Disease Prevalence

07

Disease Prevention

08

Wider Determinants of  
Health

09

GP Practice Activity

10

Unplanned Hospital  
Activity

11

Summary



# 01

---

## Introduction







# 02

---

## Key Findings





# Key Findings

Data had to be sought and collated from several different sources; not all were available on a GP practice or PCN footprint and/ or were current.

Significant analytical input has been required to present available data in a meaningful way.

Health outcome data by PCN, such as, cancer survival rates, mental health outcomes and mortality from cardiovascular and respiratory disease have not been locatable.

Whilst rich information likely exists at individual GP Practice level, PCN aggregated and linked datasets are not accessible for secondary use.

Interrogation and segmentation of PCN populations, for example, by patient demographics is not possible from data currently available for secondary use.

Actionable intelligence regarding PCN level health inequalities is limited in the absence of access to linked practice and patient level aggregated data.



# 03

---



## PCN Overview





# Bolton Central PCN

Collaborative of 13 GP Practices, located in the Rumworth and Central & Great Lever community neighbourhoods;

GP Practice Code	GP Practice	Electoral Ward	Community Neighbourhood
Y00186	3D Medical Centre	Rumworth	Rumworth
P82640	Al Fal Medical Group	Rumworth	Rumworth
P82616	Beehive Surgery	Great Lever	Central & Great Lever
Y02319	Bolton General Practice	Halliwell	Central & Great Lever
Y02790	Bolton Medical Centre	Great Lever	Central & Great Lever
P82033	Bradford Street Surgery	Tonge with the Haulgh	Central & Great Lever
P82660	Deane Clinic 1	Hulton	Rumworth
P82030	Deane Medical Centre	Rumworth	Rumworth
P82629	Dr M Dakshina-Murthi	Rumworth	Rumworth
P82633	Great Lever One	Great Lever	Central & Great Lever
P82013	Lever Chambers 2	Great Lever	Central & Great Lever
Y03366	Olive Family Practice	Rumworth	Rumworth
P82624	Orient House Medical Centre	Hulton	Rumworth

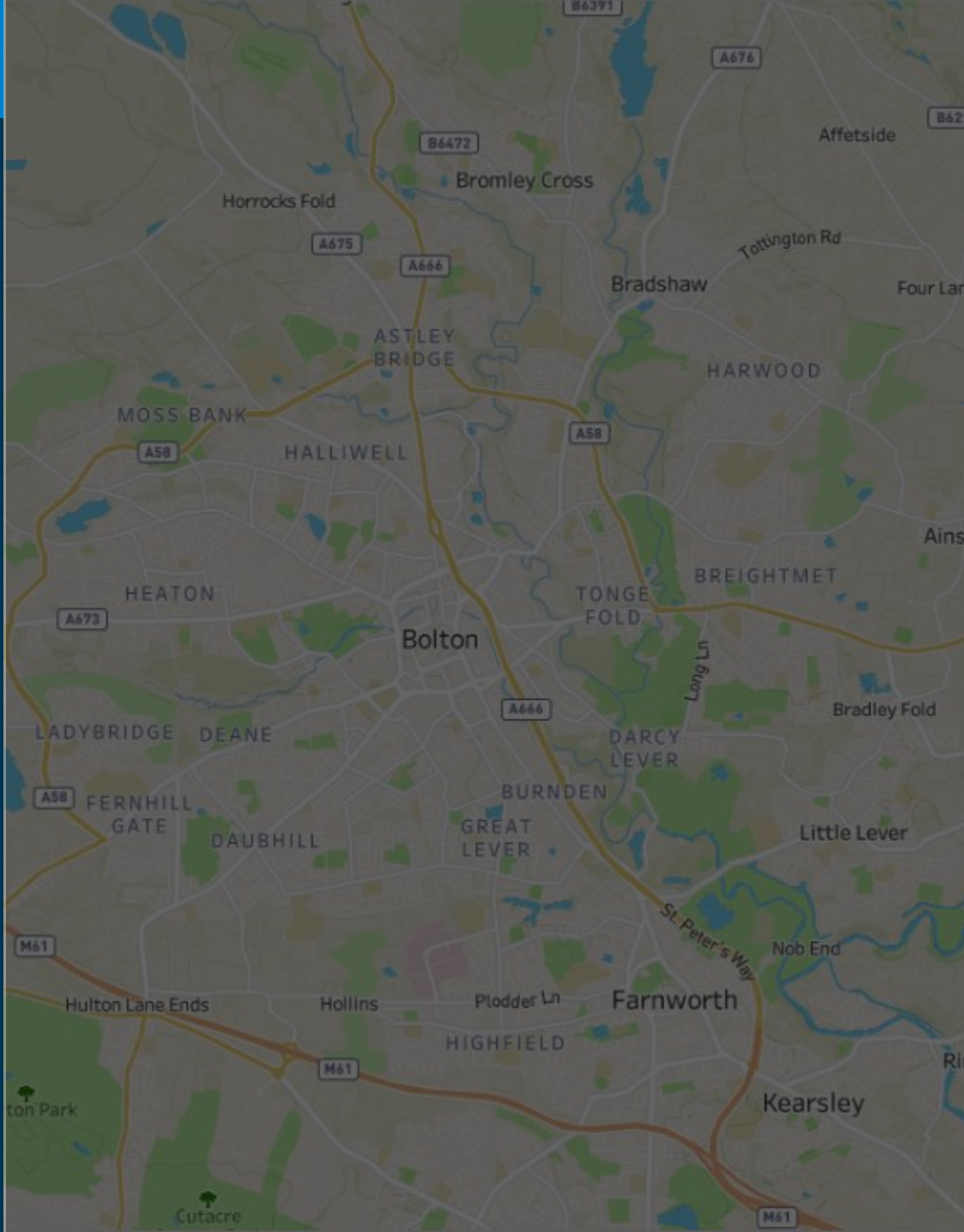
*In order to establish the nature and level of health and socio-economic inequalities across Bolton Central PCN, data have been sought at GP Practice and PCN levels where available.*

*Where this has not been possible this will be highlighted within the report.*

*For example, some data items were only available by Bolton resident population (community neighbourhood) rather than by registered PCN population (health neighbourhood).*

*Benchmarking at Bolton CCG, GM and national levels have been presented where data are available.*

Data Source: GMHSCP

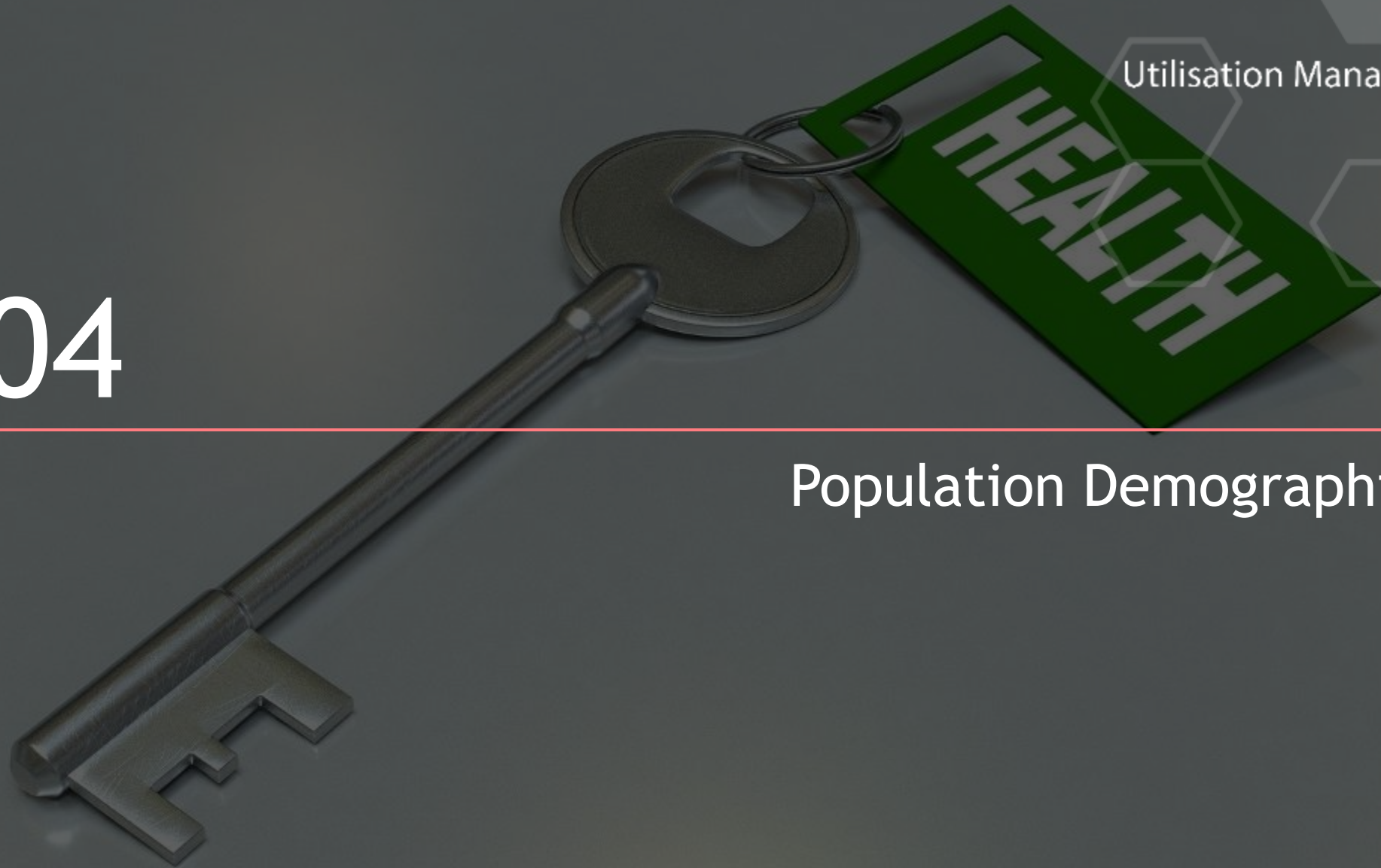




# 04

---

## Population Demographics





# Bolton Central PCN Population



Utilisation Management Unit



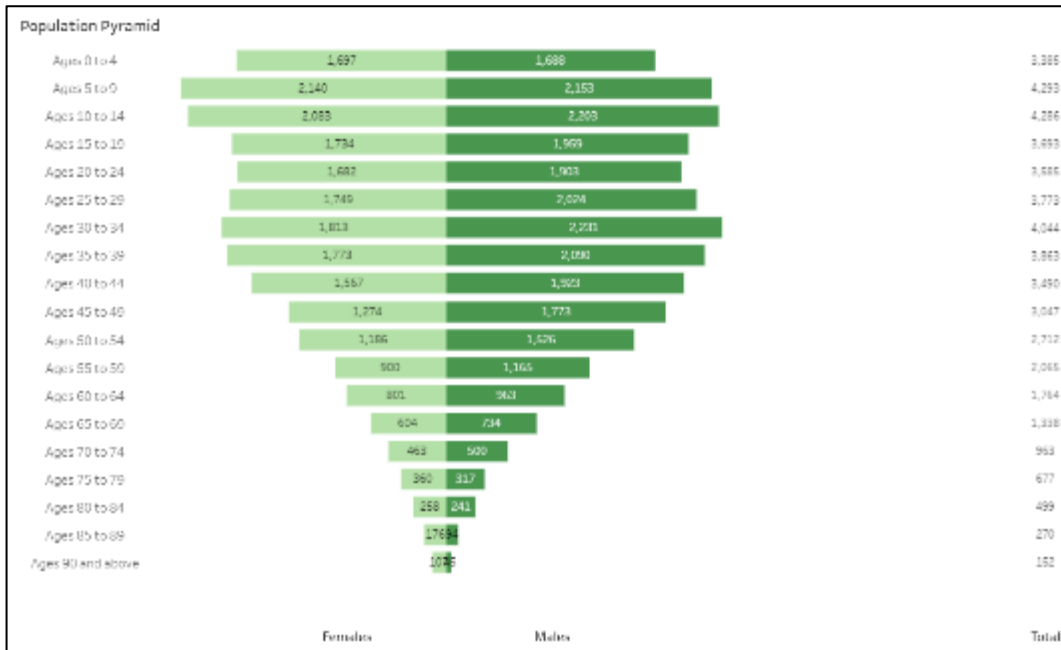
Current Registered Population = 47,900

Male: 53%; Female: 47%

Start well (0-18yrs): 31%

Live well (19-67yrs): 62%

Age well (67+yrs): 6%



## Predicted CCG Population Growth Over the Next 10 Years

Bolton CCG	Population Estimate 2021	Population Estimate 2031	% Change
<b>Age Group</b>			
0-19	74876	74002	↓1.17% (n=874)
20-39	72049	69385	↓3.70% (n=2664)
40-59	74063	72221	↓2.49% (n=1842)
60-79	53882	59316	↑10.09% (n=5434)
80+	12837	17519	↑36.47% (n=4682)
<b>Total *</b>	<b>287706</b>	<b>292443</b>	<b>↑1.65% (n=4737)</b>

Data Source: ONS

\* Figures may not sum due to rounding

Data Source: GM PCN Dashboard, September 2021

*Predicted population growth across the CCG is in the 60-79 and 80 plus year groups. The impact of the current Coronavirus pandemic on this predictive analysis is not known.*



# Vulnerable and At-Risk Groups

Ethnic Minorities

Current data have been sought but not found.

In 2011, for the wards corresponding to Bolton Central PCN, 39.1% of the resident population was from an ethnic minority.

Data Source:  
2011 Census Data on Nomis,  
Office for National Statistics

LGBTQ+

Current data have been sought but not found.

It was estimated in 2017 that 1.4% of the population in Bolton identified themselves as LGBT.

Data Source:  
Subnational Sexual Identity, Office for National Statistics

Unpaid Carers

Current data have been sought but not found.

In 2011, the number of people providing unpaid care in wards corresponding to Bolton Central PCN was 7,187.

This number equates to 10.05% of the population.

Data Source:  
2011 Census Data on Nomis,  
Office for National Statistics

People whose 1<sup>st</sup> language is not English

Current data have been sought but not found.

4.62% (n=3307) of households in the wards corresponding to Bolton Central PCN have no residents with English as a first language.

Data Source:  
2011 Census Data on Nomis,  
Office for National Statistics

Military Veterans

Current data have been sought but not found.

In 2017 it was estimated that 4% of the population of Greater Manchester were military veterans.

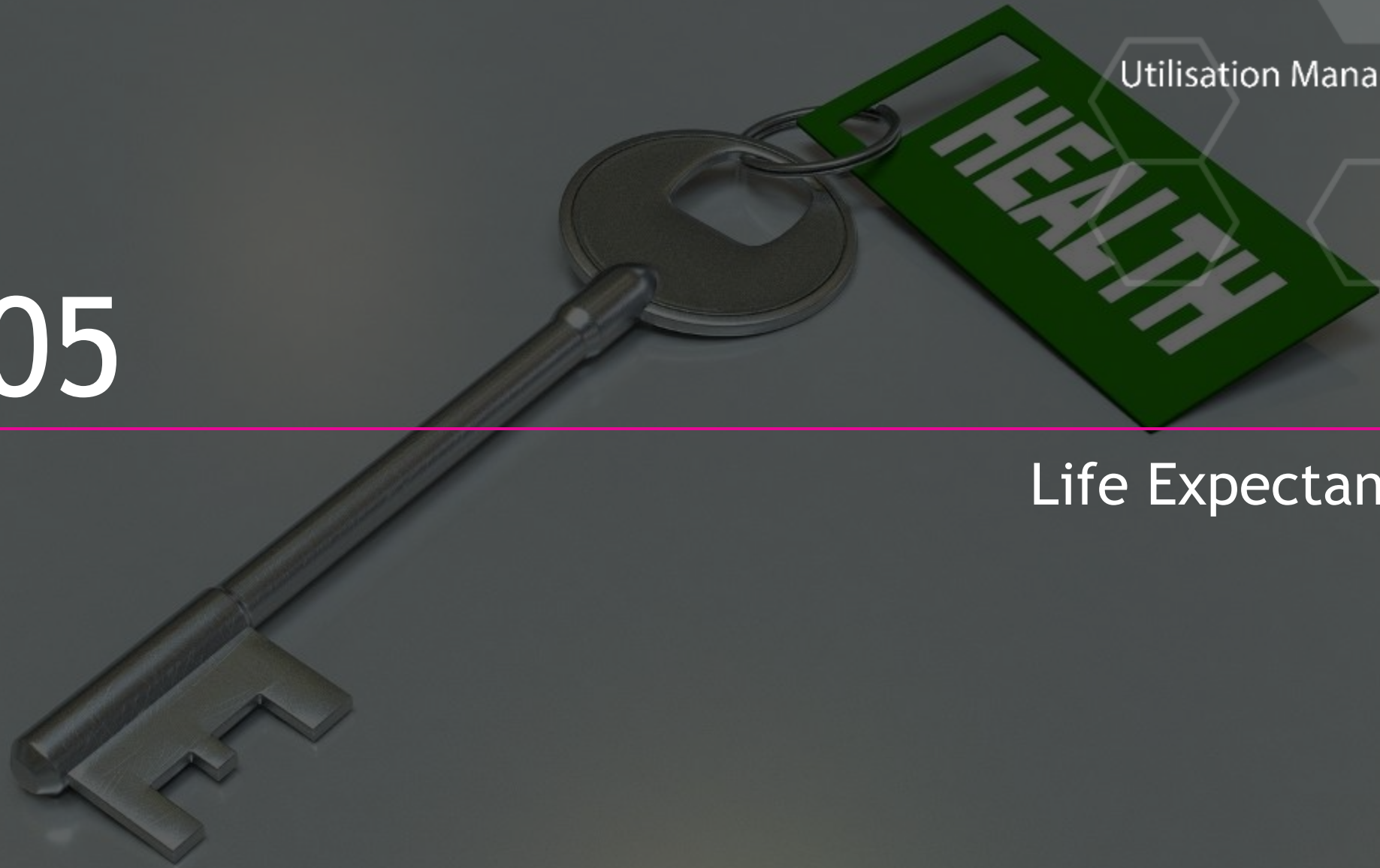
Data Source:  
2017 Annual Population Survey: UK Armed Forces Veterans residing in Great Britain



05

---

Life Expectancy





## Bolton Life Expectancy (Resident Population)

### Male Life Expectancy

Bolton: 78.0 years

North West: 78.3 years

England: 79.6 years



### Female Life Expectancy

Bolton : 81.5 years

North West: 81.9 years

England: 83.2 years



### Male Healthy Life Expectancy

Bolton : 62.5 years

North West: 61.6 years

England: 63.4 years



### Female Healthy Life Expectancy

Bolton : 58.4 years

North West: 62.5 years

England: 63.9 years



*Male life expectancy from birth in Bolton is 1.6 years lower than the national average.*

*For women the gap is slightly larger at 1.7 years below the national average.*

*Healthy life expectancy is an estimate of lifetime spent in 'very good' or 'good' health based on how individuals perceive their health (ONS).*

*Figures for Bolton are below the national average by 0.9 years for men and by 5.5 years for women.*

Data Source: Office for National Statistics (ONS)



# Life Expectancy: Early Years

## Premature Births (less than 37 weeks gestation)

Rate per 1,000 births.

	Bolton	North West	England
2010-12	75.9	77.9	75.7
2011-13	76.6	79.6	76.7
2012-14	79.7	81.4	77.6
2013-15	82.2	82.7	78.4
2014-16	86.9	84.7	79.5
2015-17	89.3	86.0	80.6
2016-18	89.3	86.3	81.2

## Child Mortality (1-17 years)

Directly standardised rate of death due to all causes per 100,000 resident population, aged 1-17 years.

	Bolton	North West	England
2010-12	13.3	14.2	12.5
2011-13	10.7	13.5	11.9
2012-14	11.7	13.1	12.0
2013-15	10.4	14.0	11.9
2014-16	14.2	14.3	11.6
2015-17	15.8	14.1	11.2
2016-18	13.3	13.3	11.0
2017-19	12.4	12.6	10.8



# 06

---

## Disease Prevalence





# Asthma

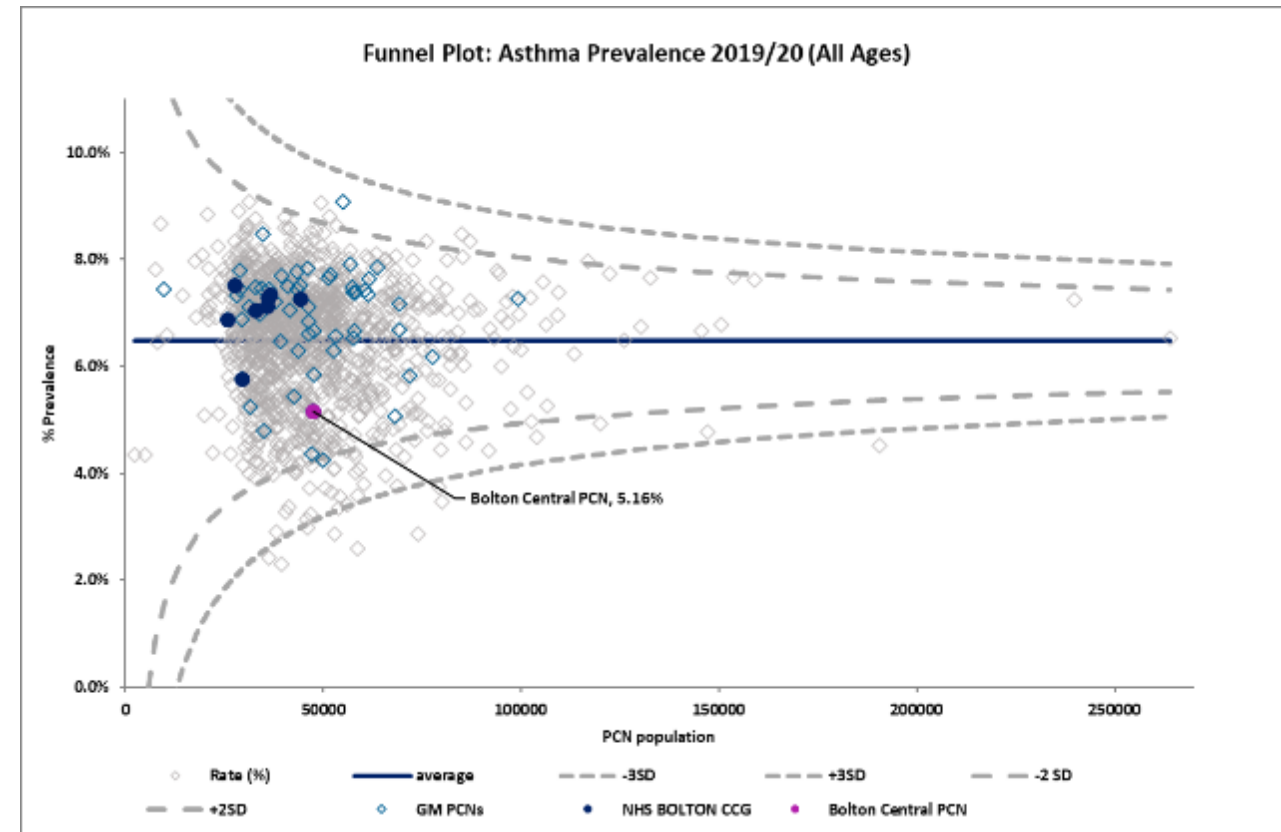
Data Source: Quality Outcomes Framework, 2019/20

Bolton Central PCN Asthma	Practice Prevalence
3D Medical Centre	4.66%
Al Fal Medical Group	6.34%
Beehive Surgery	5.72%
Bolton General Practice	2.90%
Bolton Medical Centre	4.04%
Bradford Street Surgery	5.24%
Deane Clinic 1	6.02%
Deane Medical Centre	4.24%
Dr M Dakshina-Murthi	6.03%
Great Lever One	5.73%
Lever Chambers 2	7.06%
Olive Family Practice	5.92%
Orient House Medical Centre	5.32%
<b>PCN Average</b>	<b>5.16%</b>

GM Average	England Average
6.95%	6.48%

2019/20 data show that 83.40% were in receipt of an asthma review in the preceding 12 months.

This was the highest achievement rate across Bolton.



Bolton Central PCN's asthma prevalence is lower than GM and national rates.



## Cancer

Data Source: Quality Outcomes Framework, 2019/20

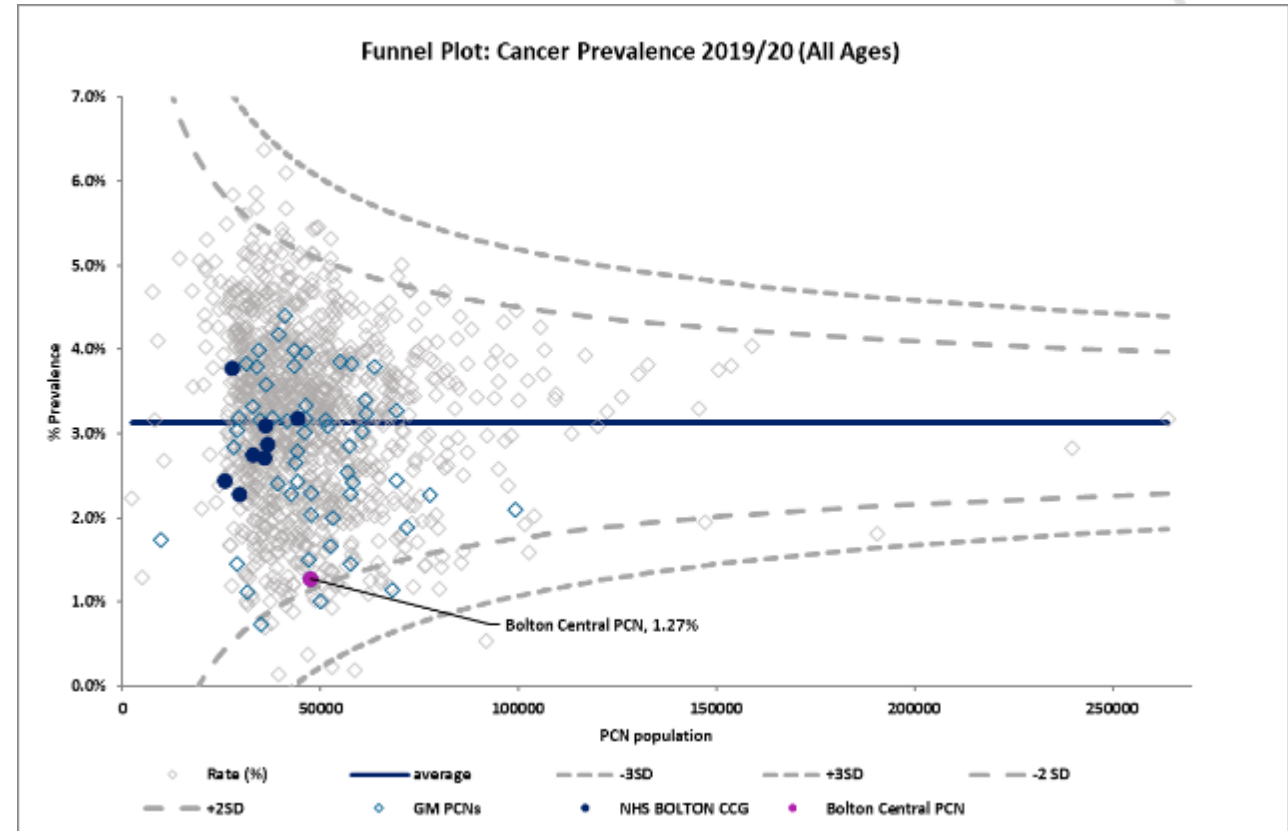
Bolton Central PCN Cancer	Practice Prevalence
3D Medical Centre	1.00%
Al Fal Medical Group	0.92%
Beehive Surgery	1.16%
Bolton General Practice	0.58%
Bolton Medical Centre	1.10%
Bradford Street Surgery	2.69%
Deane Clinic 1	1.76%
Deane Medical Centre	1.17%
Dr M Dakshina-Murthi	1.83%
Great Lever One	1.73%
Lever Chambers 2	1.44%
Olive Family Practice	0.90%
Orient House Medical Centre	1.88%
<b>PCN Average</b>	<b>1.27%</b>

GM Average	England Average
2.76%	3.13%

*Bolton Central PCN's cancer prevalence is lower than the national and GM averages.*

*2019/20 data show that 94.83% of those diagnosed with cancer in the preceding 15 months, were in receipt of a review within 6 months of the date of diagnosis.*

*Westhoughton Network PCN had the highest achievement rate across Bolton CCG at 97.37%.*



*Information regarding PCN cancer outcomes has been sought but not found, however district level data for 2017-19 suggest survival rates are lower across Bolton.*

Fingertips PHE (2017-19) Per 100,000 Population	England	Bolton
Under 75 Mortality from Cancer	129.2	136.9
Under 75 Mortality from Cancer Considered Preventable	54.1	64.0



# Cardiovascular Disease - Primary Prevention (30-74 years)



Utilisation Management Unit

Data Source: Quality Outcomes Framework, 2019/20

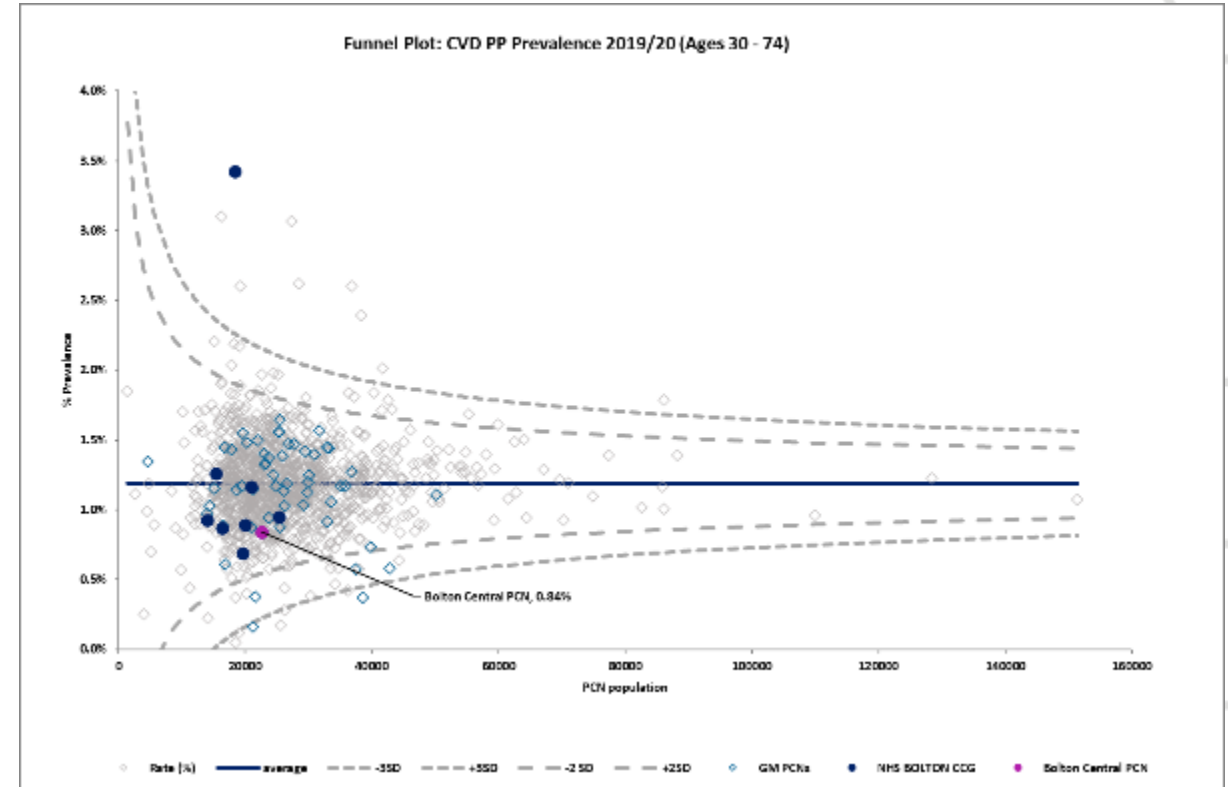
Bolton Central PCN CVD-PP	Practice Prevalence
3D Medical Centre	1.00%
Al Fal Medical Group	0.31%
Beehive Surgery	1.87%
Bolton General Practice	0.68%
Bolton Medical Centre	1.54%
Bradford Street Surgery	0.79%
Deane Clinic 1	1.05%
Deane Medical Centre	0.73%
Dr M Dakshina-Murthi	0.18%
Great Lever One	0.89%
Lever Chambers 2	0.74%
Olive Family Practice	0.69%
Orient House Medical Centre	0.00%
<b>PCN Average</b>	<b>0.84%</b>

GM Average	England Average
1.16%	1.19%

Bolton Central PCN's CVD-PP prevalence is lower than GM and national averages.

2019/20 data show that 100% of this cohort who had a recorded CVD risk assessment score of  $\geq 20\%$  in the preceding 12 months were treated with statins.

Bolton Central, Horwich Network, Farnworth and Kearsley, and Westhoughton Network PCNs had the highest achievement rates across Bolton at 100%.



Information regarding PCN cardiovascular disease outcomes has been sought but not found, however district level data for 2017-19 suggest poorer outcomes across Bolton.

Fingertips PHE (2017-19) Per 100,000 Population	England	Bolton
Under 75 Mortality from all Cardiovascular diseases	70.4	99.7
Under 75 Mortality from Cardiovascular Disease Considered Preventable	28.2	39.4

# Chronic Obstructive Pulmonary Disease (COPD)

Utilisation Management Unit

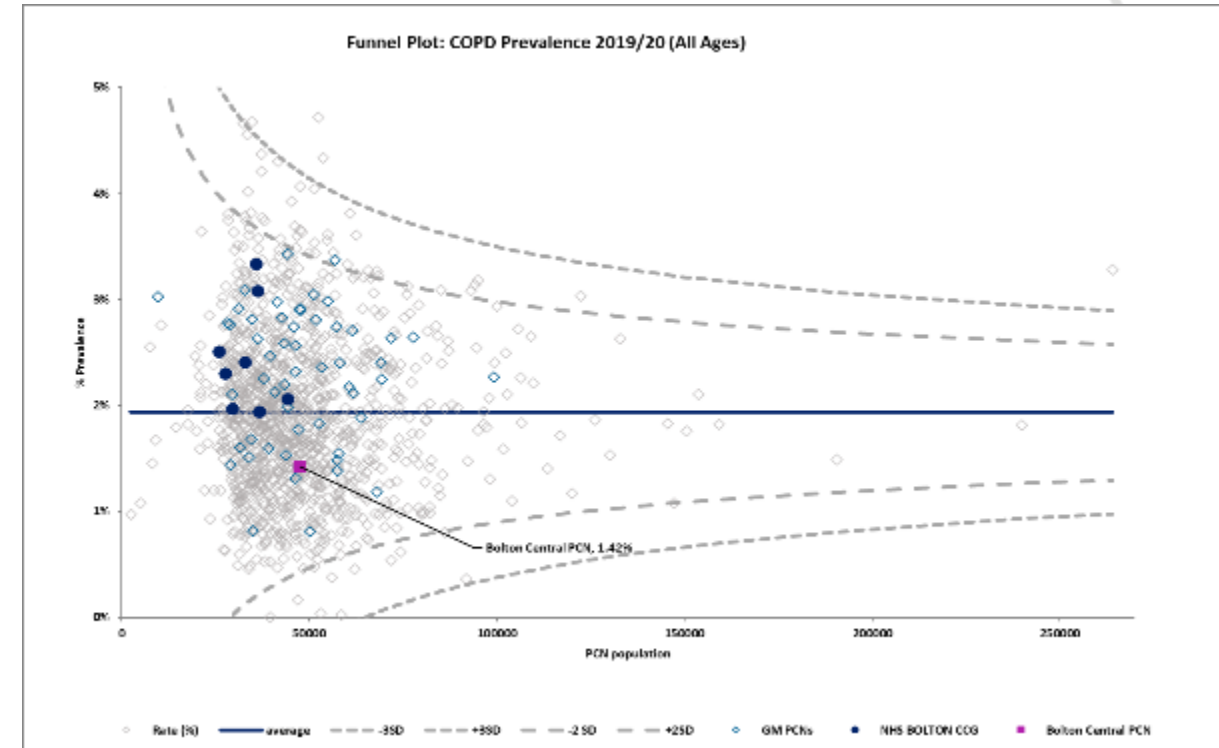
Data Source: Quality Outcomes Framework, 2019/20

Bolton Central PCN COPD	Practice Prevalence
3D Medical Centre	1.00%
Al Fal Medical Group	0.82%
Beehive Surgery	1.21%
Bolton General Practice	1.13%
Bolton Medical Centre	1.03%
Bradford Street Surgery	2.26%
Deane Clinic 1	2.14%
Deane Medical Centre	1.22%
Dr M Dakshina-Murthi	2.36%
Great Lever One	2.14%
Lever Chambers 2	2.69%
Olive Family Practice	0.62%
Orient House Medical Centre	1.40%
<b>PCN Average</b>	<b>1.42%</b>

GM Average	England Average
2.33%	1.94%

Bolton Central PCN's COPD prevalence is lower than both the GM and national averages.

2019/20 data show that 93.62% were in receipt of a COPD review in the preceding 12 months. Horwich Network PCN had the highest achievement rate across Bolton at 94.64%.



Information regarding PCN respiratory disease outcomes has been sought but not found, however district level data for 2017-19 suggest poorer outcomes across Bolton.

Fingertips PHE (2017-19) Per 100,000 Population	England	Bolton
Under 75 Mortality from Respiratory Disease	34.2	53.1
Under 75 Mortality from Respiratory Disease Considered Preventable	20.0	28.7



# Dementia

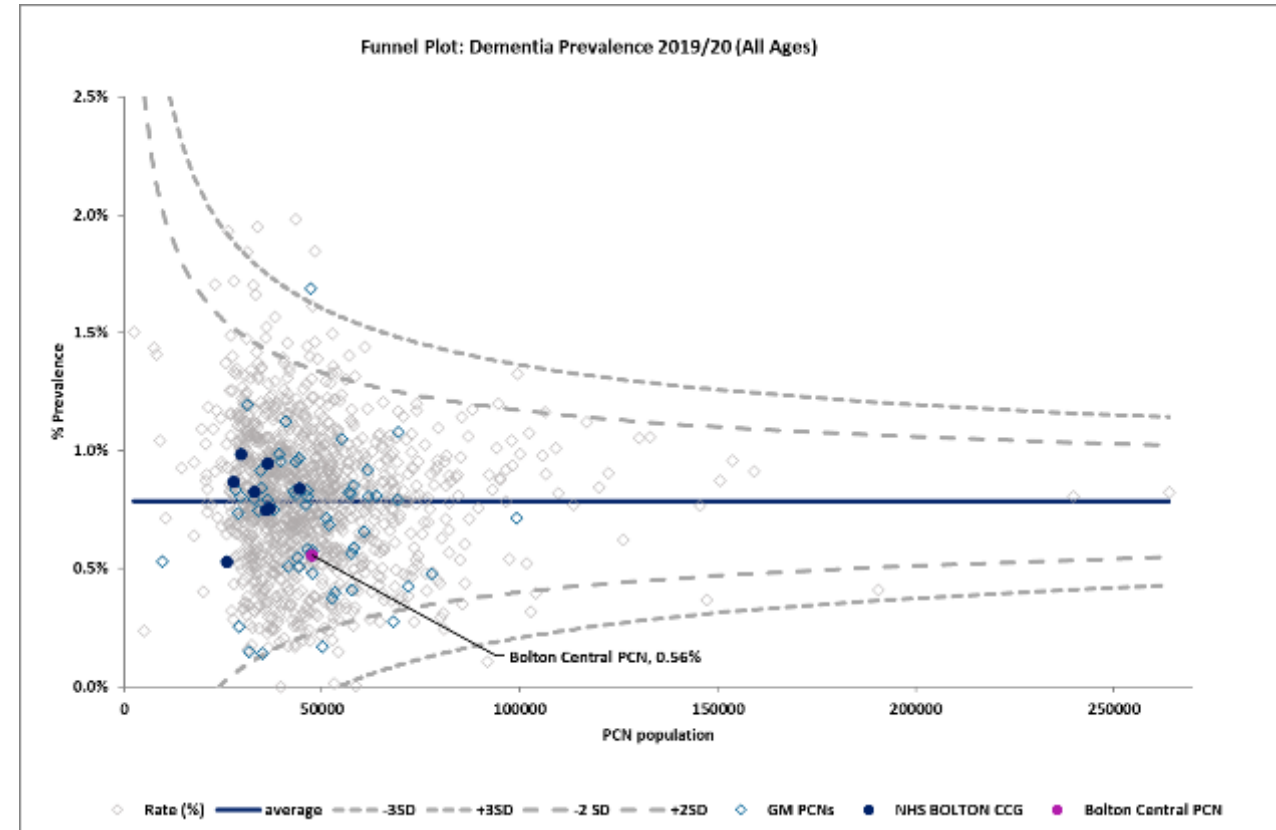
Data Source: Quality Outcomes Framework, 2019/20

Bolton Central PCN Dementia	Practice Prevalence
3D Medical Centre	0.37%
Al Fal Medical Group	0.17%
Beehive Surgery	0.24%
Bolton General Practice	0.12%
Bolton Medical Centre	0.28%
Bradford Street Surgery	2.84%
Deane Clinic 1	0.20%
Deane Medical Centre	1.64%
Dr M Dakshina-Murthi	0.29%
Great Lever One	0.62%
Lever Chambers 2	0.44%
Olive Family Practice	0.44%
Orient House Medical Centre	0.90%
<b>PCN Average</b>	<b>0.56%</b>

GM Average	England Average
0.73%	0.79%

2019/20 data show that 92.46% had their care plan reviewed in a face-to-face meeting in the preceding 12 months.

Rumworth PCN had the highest achievement rate across Bolton at 94.18%.



Bolton Central PCN's dementia prevalence is lower than the national rate, acknowledging variation at practice level.

# Diabetes (17 years+)

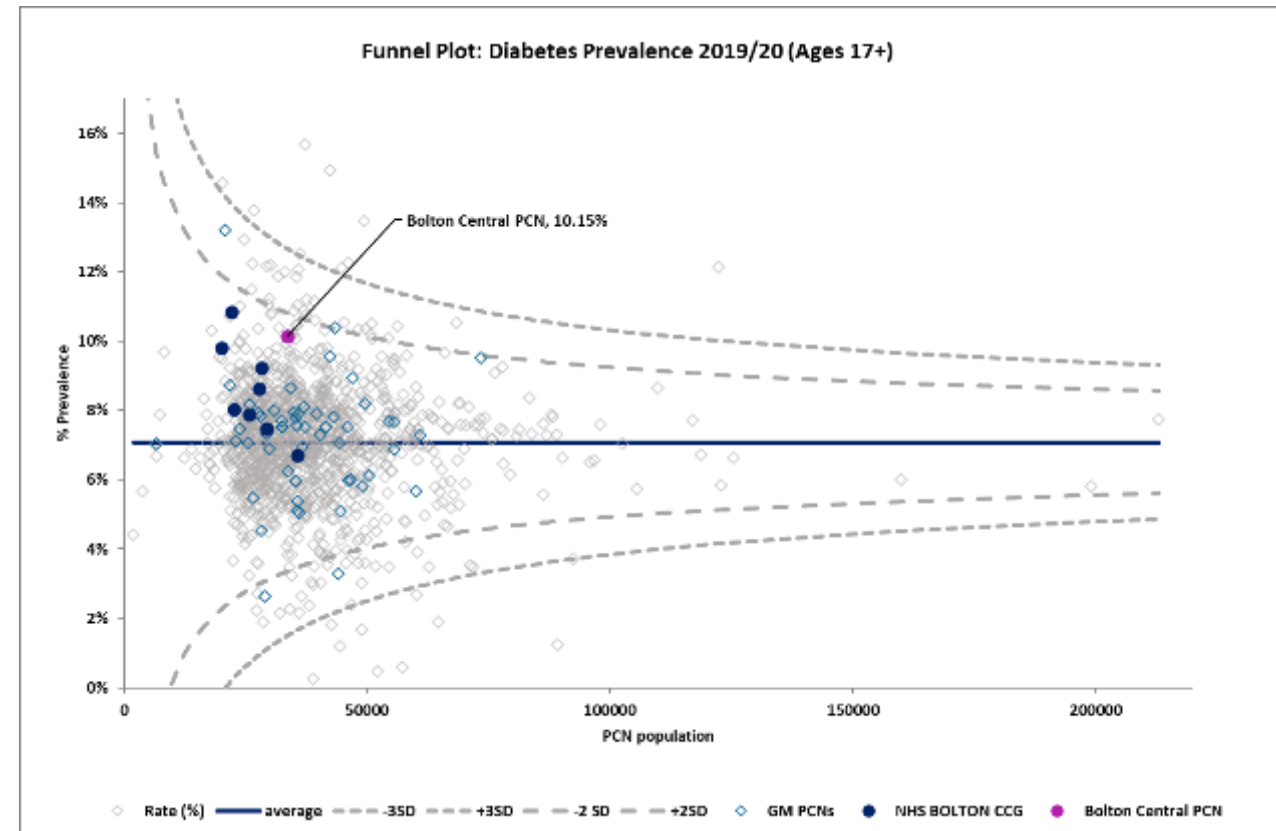
Data Source: Quality Outcomes Framework, 2019/20

Bolton Central PCN Diabetes	Practice Prevalence
3D Medical Centre	11.15%
Al Fal Medical Group	11.82%
Beehive Surgery	11.00%
Bolton General Practice	4.77%
Bolton Medical Centre	8.25%
Bradford Street Surgery	10.45%
Deane Clinic 1	10.83%
Deane Medical Centre	11.17%
Dr M Dakshina-Murthi	12.99%
Great Lever One	12.51%
Lever Chambers 2	11.65%
Olive Family Practice	11.96%
Orient House Medical Centre	9.46%
<b>PCN Average</b>	<b>10.15%</b>

GM Average	England Average
7.42%	7.08%

2019/20 data show in the absence of moderate or severe frailty, that for 59.59% their last IFCC-HbA1c was 58 mmol/mol or less in the preceding 12 months. Horwich Network PCN had the highest achievement rate across Bolton at 70.44%.

82.63% were recorded as being in receipt of a foot examination and risk classification within the preceding 12 months. Horwich Network PCN had the highest achievement rate across Bolton at 90.86%.





# Hypertension

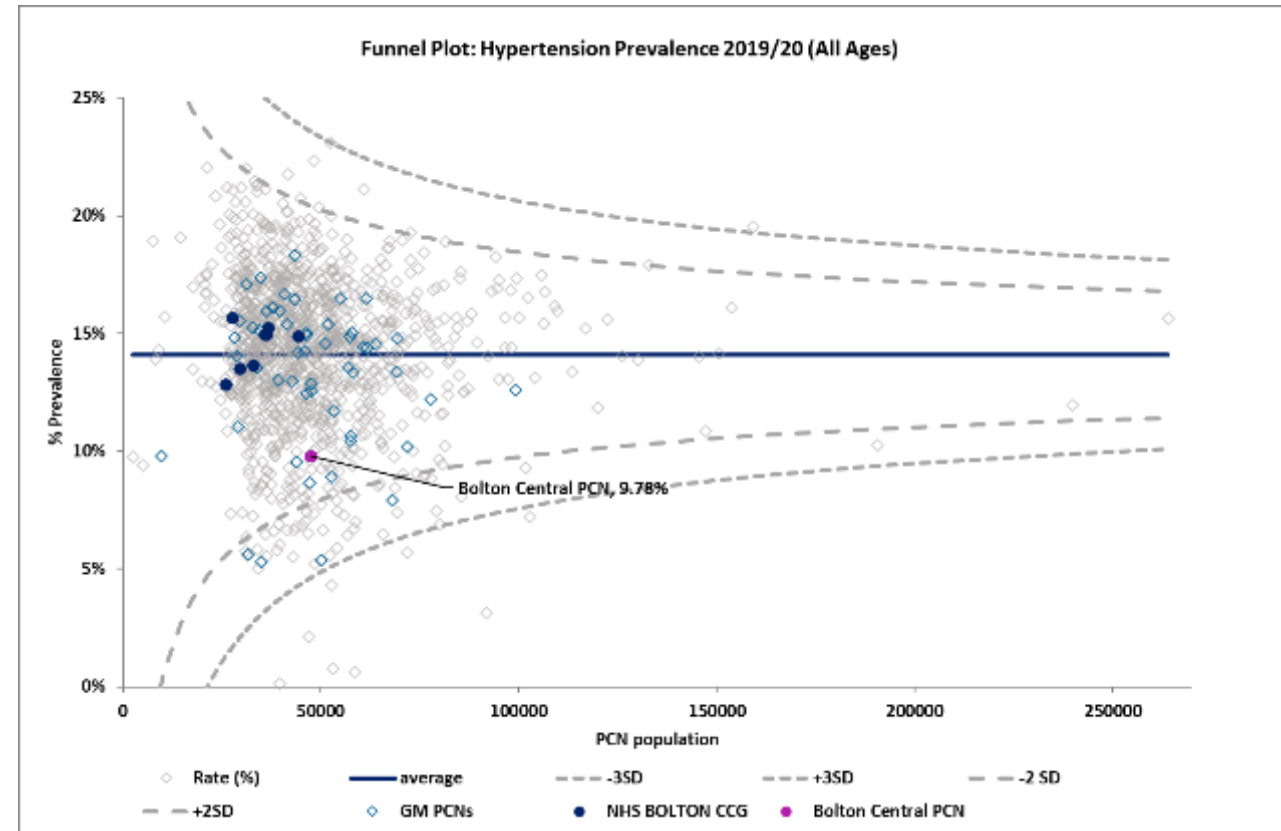
Data Source: Quality Outcomes Framework, 2019/20

Bolton Central PCN Hypertension	Practice Prevalence
3D Medical Centre	8.96%
Al Fal Medical Group	9.25%
Beehive Surgery	10.05%
Bolton General Practice	4.33%
Bolton Medical Centre	7.33%
Bradford Street Surgery	14.33%
Deane Clinic 1	12.49%
Deane Medical Centre	10.79%
Dr M Dakshina-Murthi	12.78%
Great Lever One	14.30%
Lever Chambers 2	14.61%
Olive Family Practice	7.44%
Orient House Medical Centre	10.52%
<b>PCN Average</b>	<b>9.78%</b>

GM Average	England Average
13.53%	14.09%

2019/20 data show for those aged 79 years or under, that for 77.71% their last blood pressure recording was 140/90 mmHg or less in the preceding 12 months.

This was the highest achievement rate across Bolton.





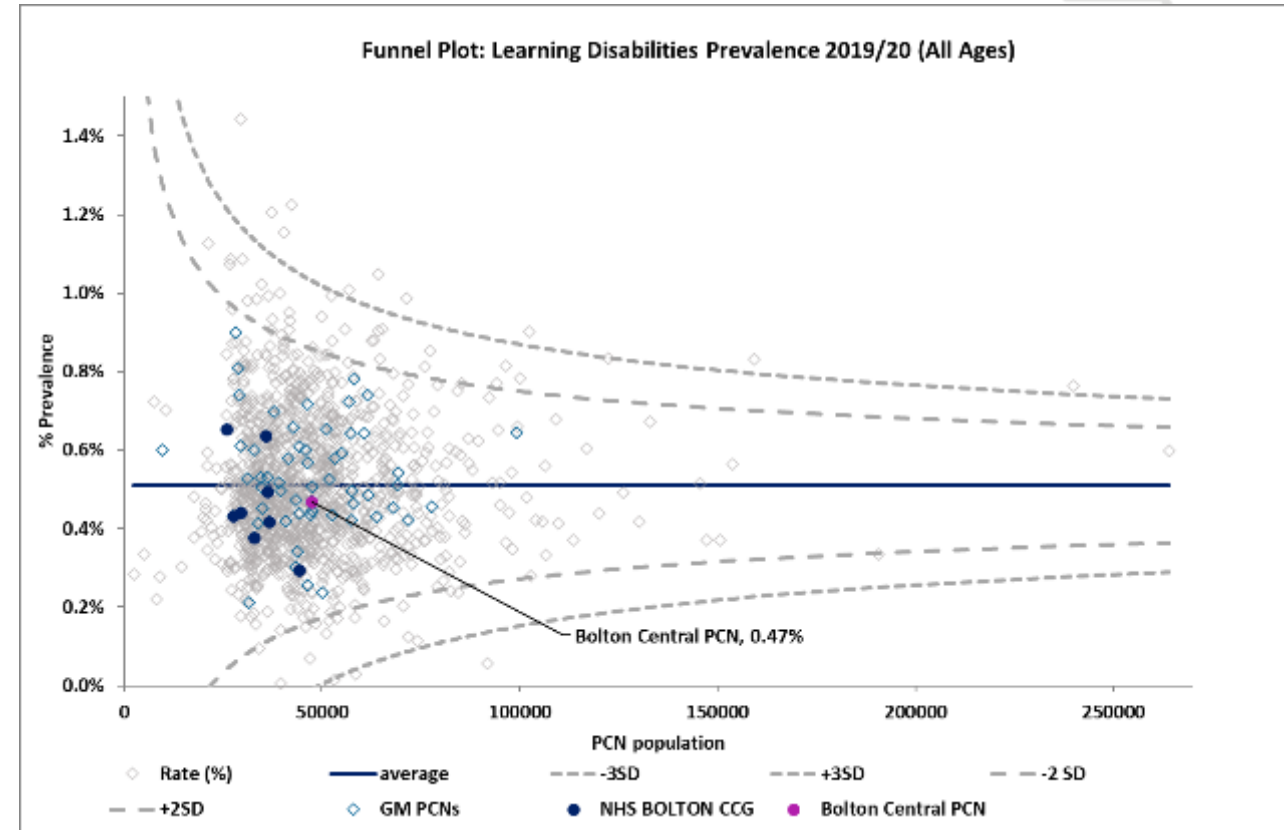
# Learning Disability

Data Source: Quality Outcomes Framework, 2019/20

Bolton Central PCN Learning Disability	Practice Prevalence
3D Medical Centre	0.19%
Al Fal Medical Group	1.01%
Beehive Surgery	0.46%
Bolton General Practice	0.21%
Bolton Medical Centre	0.20%
Bradford Street Surgery	0.10%
Deane Clinic 1	0.55%
Deane Medical Centre	0.40%
Dr M Dakshina-Murthi	0.34%
Great Lever One	0.70%
Lever Chambers 2	0.55%
Olive Family Practice	0.90%
Orient House Medical Centre	0.39%
<b>PCN Average</b>	<b>0.47%</b>

GM Average	England Average
0.53%	0.51%

Annual health check data which has been located by CCG suggest whilst there has been a reduction in the percentage of health checks completed, achievement rates were above GM and national levels in both 2018/19 and 2019/20.



Learning Disabilities Health Check Scheme, NHS Digital	2018/19	2019/20
Bolton CCG	70.7%	67.9%
GM	52.5%	55.9%
England	51.3%	51.9%





# Severe Mental Health

Data Source: Quality Outcomes Framework, 2019/20

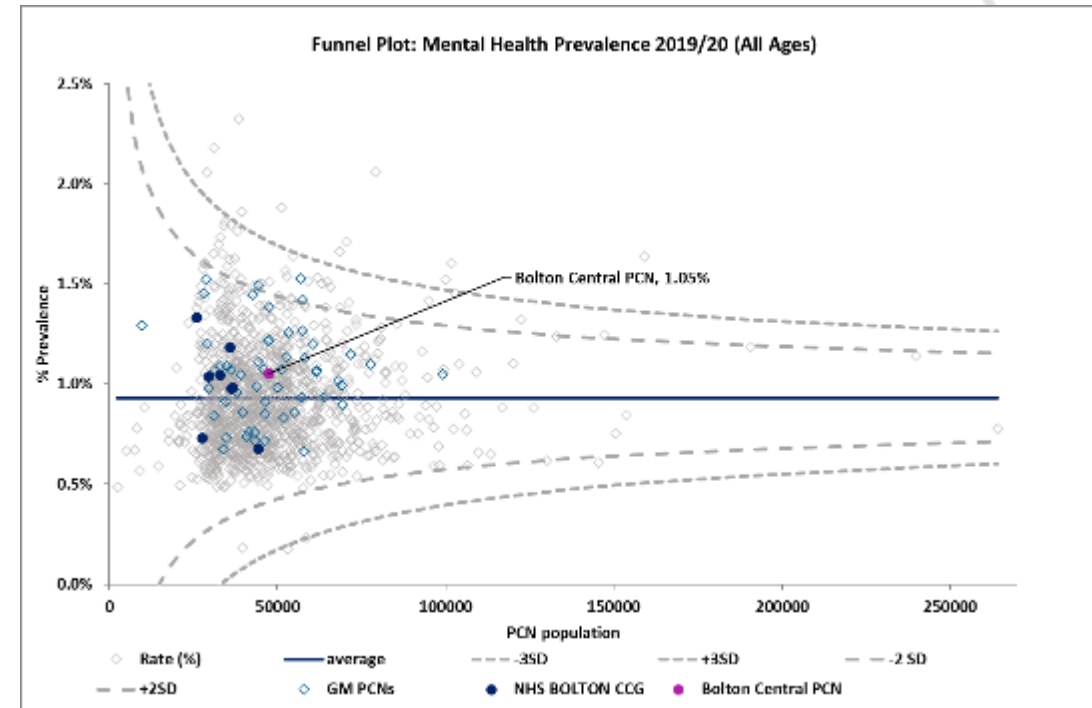
Bolton Central PCN Severe Mental Health	Practice Prevalence
3D Medical Centre	0.56%
Al Fal Medical Group	0.67%
Beehive Surgery	0.70%
Bolton General Practice	1.10%
Bolton Medical Centre	0.83%
Bradford Street Surgery	1.63%
Deane Clinic 1	1.56%
Deane Medical Centre	1.01%
Dr M Dakshina-Murthi	1.01%
Great Lever One	0.91%
Lever Chambers 2	1.49%
Olive Family Practice	1.34%
Orient House Medical Centre	0.93%
<b>PCN Average</b>	<b>1.05%</b>

GM Average	England Average
1.03%	0.93%

Bolton Central PCN's severe mental health prevalence is slightly higher than the national average.

2019/20 data show that 88.42% had a comprehensive care plan documented in their care record in the preceding 12 months.

Turton PCN had the highest achievement rate across Bolton at 94.50%.



Information regarding PCN Mental Health outcomes has been sought but not found, however district level data suggest a similar level of intentional self-harm across Bolton, when benchmarked against national figures.

Fingertips PHE Per 100,000 Population	England	Bolton
Suicide Rate (2017/19)	10.1	11.2
Emergency Hospital Admissions for Intentional Self-Harm (2019/20)	192.6	186.2



# Visual Impairment

Data regarding the number of Bolton Central PCN adults who have a moderate or severe visual impairment has been sought but not found. Estimated numbers with projections to 2040 that are available on a Bolton footprint, suggest increasing prevalence attributed to ageing populations. Whilst some sight loss may be correctable, age related macular degeneration is the most common cause of registrable sight loss in older people.

Bolton	2020	2025	2030	2035	2040
People aged 18-64 predicted to have a serious visual impairment	109	109	109	109	109
People aged 65-74 predicted to have a moderate or severe visual impairment	1,546	1,490	1,652	1,792	1,747
People aged 75 and over predicted to have a moderate or severe visual impairment	2,802	3,311	3,472	3,683	4,042
<b>Total</b>	<b>4,457</b>	<b>4,910</b>	<b>5,233</b>	<b>5,584</b>	<b>5,898</b>



# Hearing Loss



## Utilisation Management Unit

Data regarding how many Bolton Central PCN adults have hearing loss has been sought but not found.

Estimated numbers with projections to 2040 available on a Bolton footprint suggest increasing prevalence attributed to an ageing population.

Hearing loss is a common but often unacknowledged long term condition that can have an adverse impact on a person's health and quality of life.

<b>Bolton Some Hearing Loss</b>	<b>2020</b>	<b>2025</b>	<b>2030</b>	<b>2035</b>	<b>2040</b>
People aged 18-64 predicted to have some hearing loss	16,492	17,002	16,782	16,343	16,181
People aged 65-74 predicted to have some hearing loss	12,827	12,084	13,270	14,534	14,392
People aged 75 -84 predicted to have some hearing loss	11,823	14,041	14,793	14,372	16,125
People aged 85+ predicted to have some hearing loss	5,466	6,161	7,202	8,933	9,220
<b>Total</b>	<b>46,608</b>	<b>49,288</b>	<b>52,047</b>	<b>54,182</b>	<b>55,918</b>
Figures may not sum due to rounding					

<b>Bolton Severe Hearing Loss</b>	<b>2020</b>	<b>2025</b>	<b>2030</b>	<b>2035</b>	<b>2040</b>
People aged 18-64 predicted to have severe hearing loss	997	1,038	1,020	976	964
People aged 65-74 predicted to have severe hearing loss	828	778	853	936	928
People aged 75 -84 predicted to have severe hearing loss	1,626	1,890	2,203	2,022	2,230
People aged 85+ predicted to have severe hearing loss	1,305	1,471	1,720	2,133	2,201
<b>Total</b>	<b>4,756</b>	<b>5,177</b>	<b>5,796</b>	<b>6,067</b>	<b>6,323</b>
Figures may not sum due to rounding					



# 07

---

## Disease Prevention





## 7.1 Life Style



# Physical Activity

Information regarding physical activity was only locatable at a district level.

Fingertips PHE (2018/19)	England	Bolton
Percentage of Physically Active Children and Young People	46.8%	46.0%
Percentage of Physically Active Adults	67.2%	61.6%

For the period 2018/19, data suggest when benchmarked against national figures, a higher proportion of physically inactive adults in Bolton.

The percentage of physically active children and young people is in line with the national average.



# Obesity (18 years+)

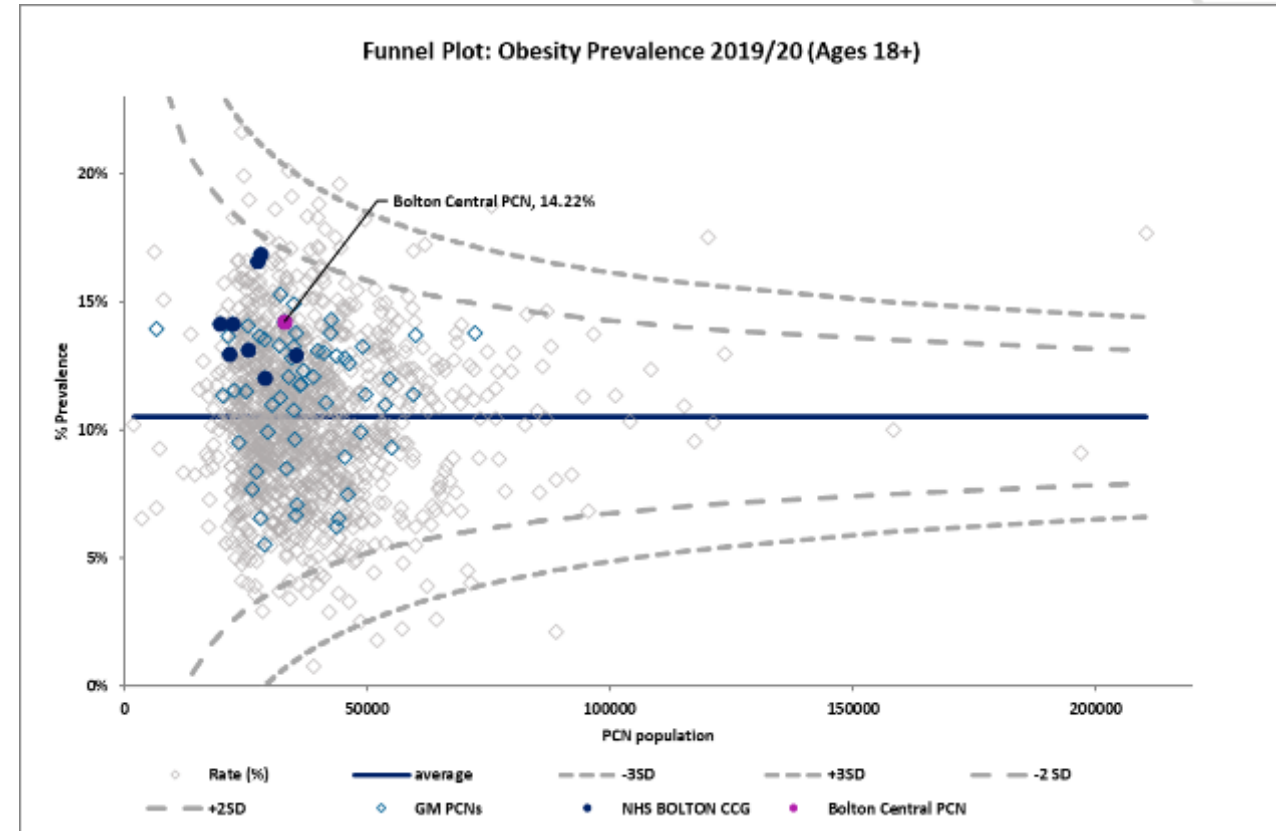
Data Source: Quality Outcomes Framework, 2019/20

Bolton Central PCN Obesity	Practice Prevalence
3D Medical Centre	14.45%
Al Fal Medical Group	12.76%
Beehive Surgery	21.73%
Bolton General Practice	11.92%
Bolton Medical Centre	13.40%
Bradford Street Surgery	8.22%
Deane Clinic 1	16.08%
Deane Medical Centre	13.88%
Dr M Dakshina-Murthi	18.18%
Great Lever One	15.67%
Lever Chambers 2	13.92%
Olive Family Practice	11.47%
Orient House Medical Centre	16.65%
<b>PCN Average</b>	<b>14.22%</b>

GM Average	England Average
11.58%	10.51%

Data regarding childhood obesity has only been locatable at a district level;

Fingertips PHE	England	Bolton
Year 6: Prevalence of Overweight including Obesity (2019/20)	35.2%	36.1%



Similar to all PCNs within Bolton CCG, Bolton Central PCN's obesity prevalence is higher than the national average.



# Smoking (15 years+)



Utilisation Management Unit

Data Source: Quality Outcomes Framework, 2019/20

Bolton Central PCN Smoking	Practice Prevalence
3D Medical Centre	22.66%
Al Fal Medical Group	15.34%
Beehive Surgery	20.96%
Bolton General Practice	26.44%
Bolton Medical Centre	22.26%
Bradford Street Surgery	24.04%
Deane Clinic 1	28.09%
Deane Medical Centre	20.32%
Dr M Dakshina-Murthi	17.05%
Great Lever One	23.39%
Lever Chambers 2	23.52%
Olive Family Practice	15.92%
Orient House Medical Centre	16.37%
<b>PCN Average</b>	<b>21.36%</b>

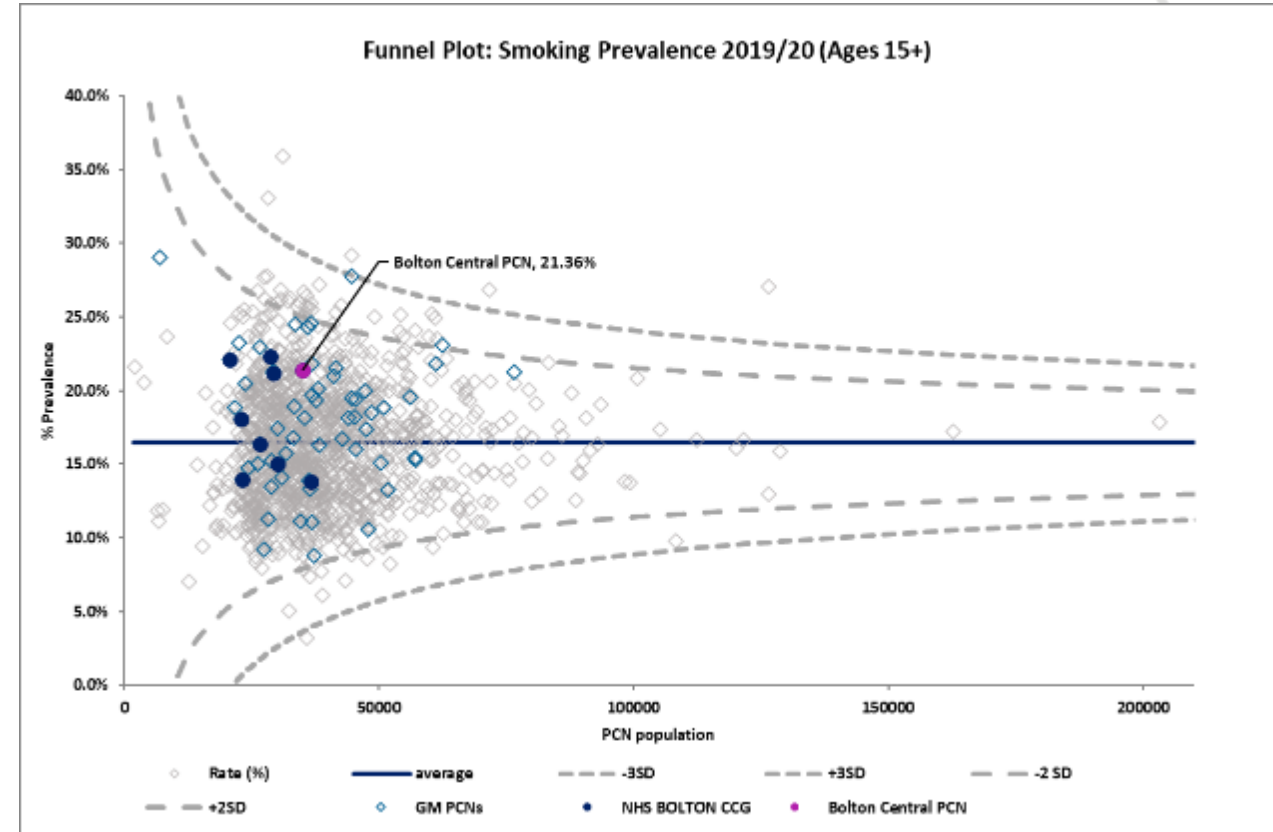
GM Average	England Average
18.16%	16.47%

2019/20 data show that 92.32% of smokers had a record of an offer of support and treatment within the preceding 24 months.

Brightmet and Little Lever PCN had the highest achievement rate across Bolton at 92.96%.

Data regarding smoking in pregnancy has only been locatable at a district level;

Fingertips PHE	England	Bolton
Smoking Status at Time of Delivery (2019/20)	10.4%	12.4%



Bolton Central PCN's smoking prevalence is higher than GM and national rates.

Data regarding the prevalence of e-cigarette use have been sought but not found.



## Tooth Decay in 3 Year Olds

Mean severity of tooth decay in children aged three years based on the mean number of teeth per child sampled which were either actively decayed or had been filled or extracted.

	2012/13	2019/20
Bolton	0.76	Not available
NW	0.47	0.42
England	0.36	0.31

## Chlamydia Detection Rates

All chlamydia diagnoses in 15 to 24 year olds attending specialist and non-specialist sexual health services, who are residents in England, expressed as a rate per 100,000 population.

	2015	2016	2017	2018	2019	2020
Bolton	1933	2054	1714	2063	1305	601
NW	2361	2277	2168	2176	1990	1249
England	1914	1917	1929	1999	2043	1420

## Accidental Poisoning in 0-4 Year Olds

Emergency hospital admissions per 100,000 resident population due to accidental poisoning in children aged 0-4 years.

	2014/15-16/17	2015/16-17/18	2016/17-18/19	2017/18-19/20
Bolton	230.6	205.1	171.5	129.5
NW	217.5	204.8	196.6	180.3
England	145.5	136.1	126.6	118.2

## Teenage Mothers

Percentage of delivery episodes, where the mother is aged under 18 years.

	2016/17	2017/18	2018/19	2019/20
Bolton	0.7%	0.6%	0.9%	0.8%
NW	0.9%	0.9%	0.8%	0.8%
England	0.8%	0.7%	0.6%	0.7%



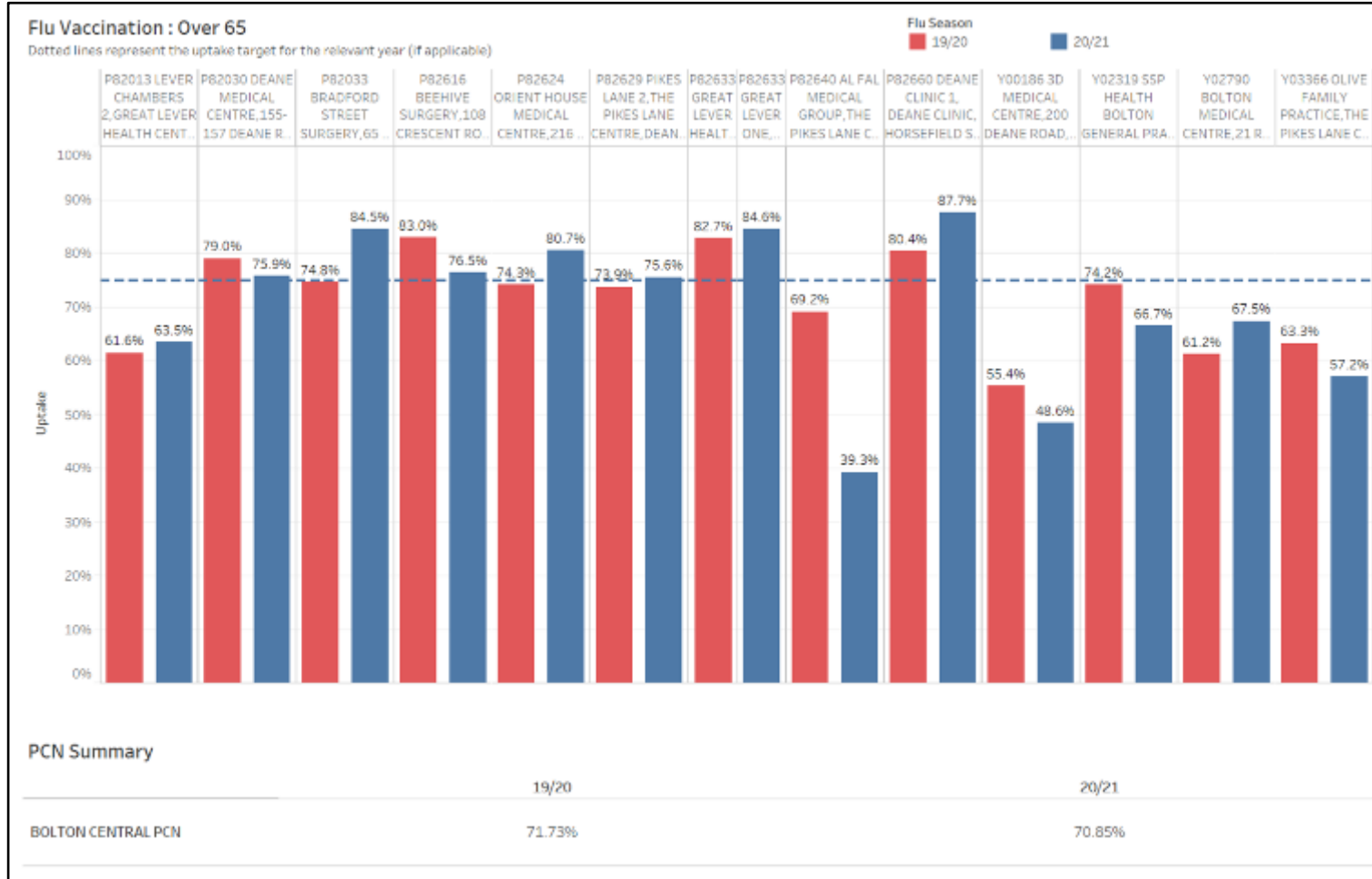
## 7.2 Immunisation





# Flu Vaccination: 65 & Over

Data Source: GM HSCP



**2019/20 Flu Season:** Bolton Central PCN 65 & over vaccination uptake was 71.73%.

4 of 13 practices met the 75% vaccination target in 2019/20

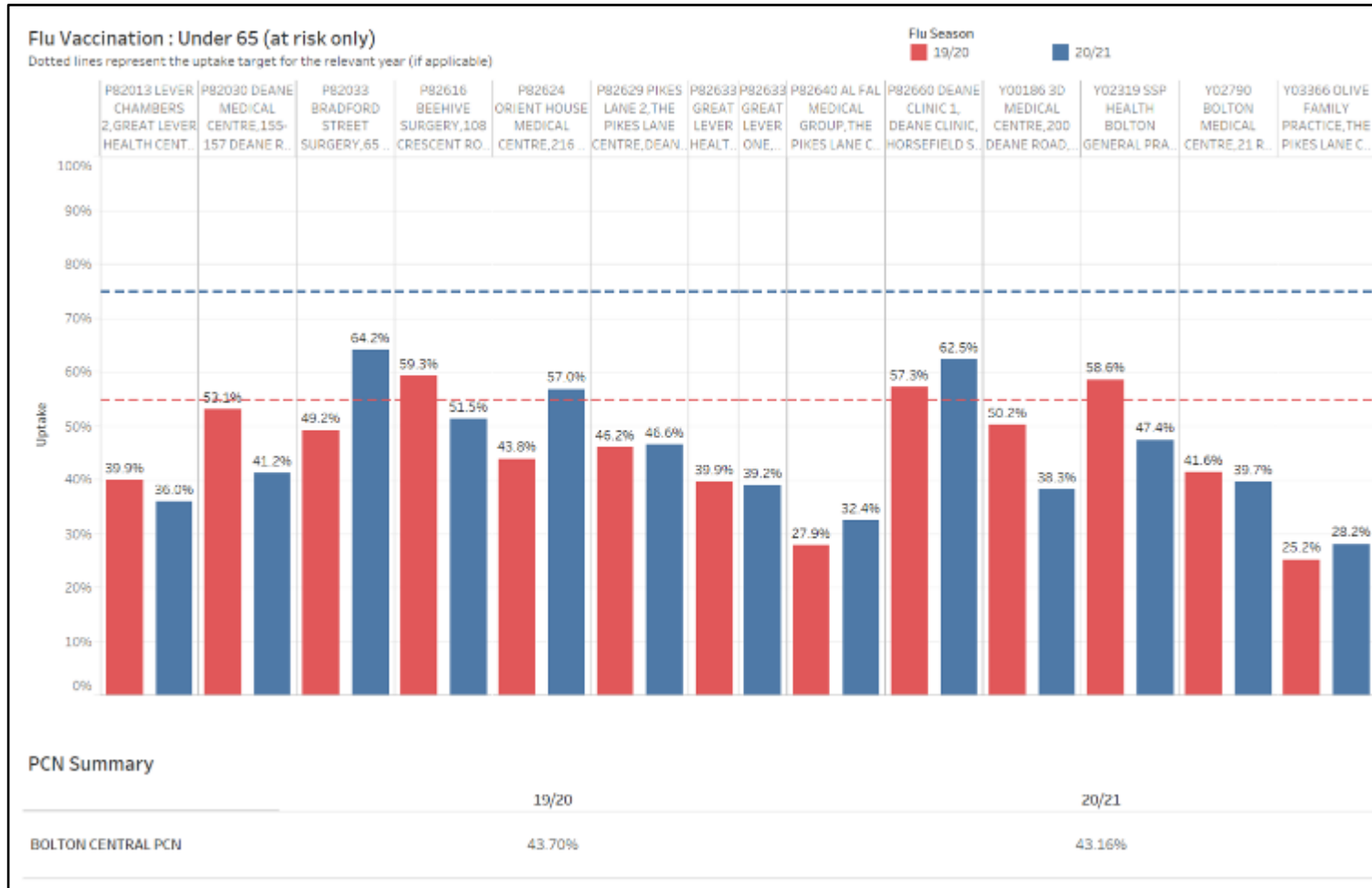
**2020/21 Flu Season:** Similar uptake to that of the previous year was seen for the PCN as a whole (70.85%). While uptake at some practices did increase, there were notable reductions in uptake at other practices.

7 of 13 practices met the 75% vaccination target in 2020/21



# Flu Vaccination: Under 65 (at risk only)

Data Source: GM HSCP



**2019/20 Flu Season:** Bolton Central PCN's under 65 at risk only vaccination uptake was 43.70%.

3 of 13 practices reached the 55% uptake target in 2019/20

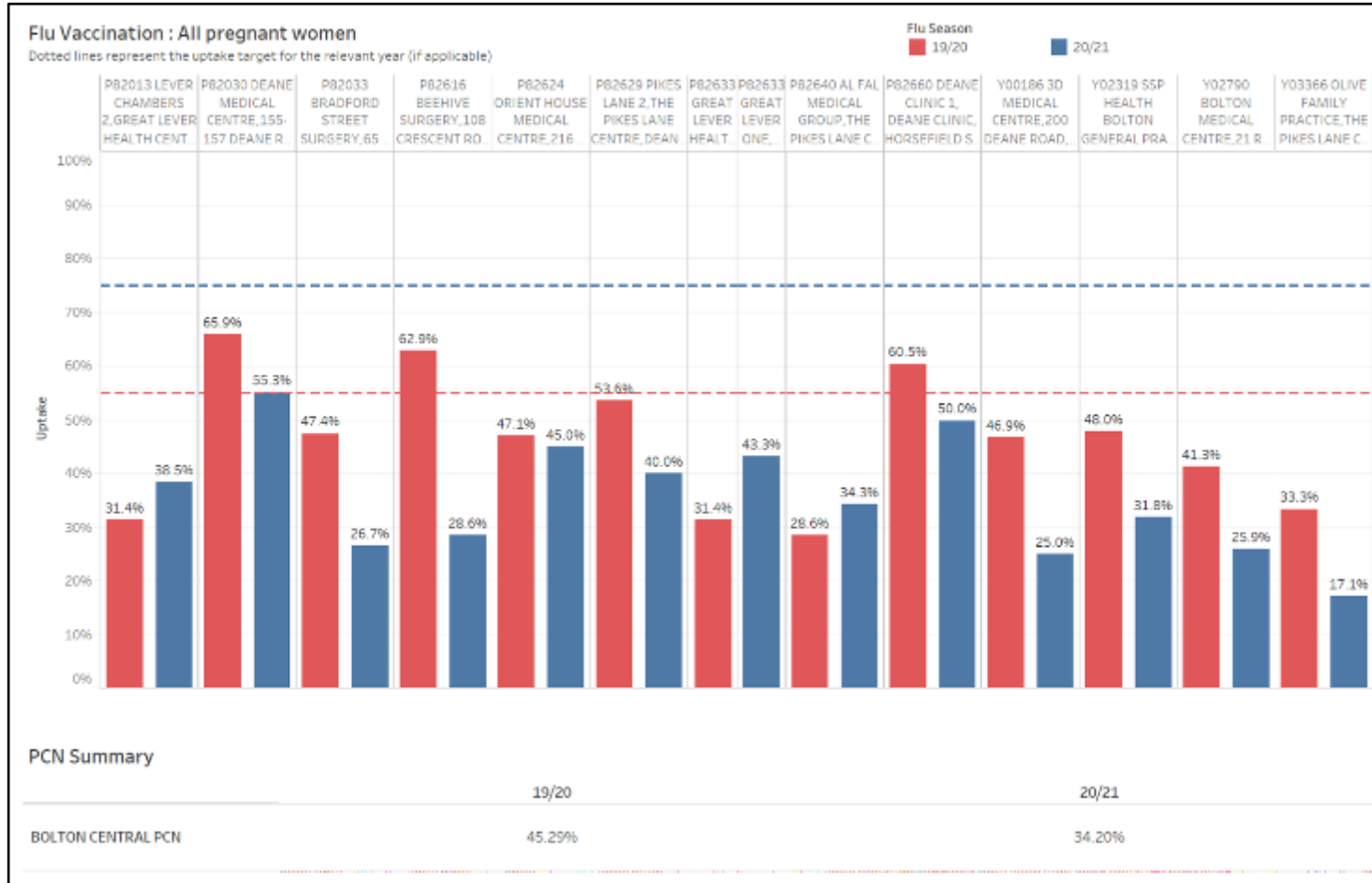
**2020/21 Flu Season:** Bolton Central PCN's under 65 at risk only vaccination uptake was 43.16%.

No practices reached the revised target of 75% in 2020/21.



# Flu Vaccination: All Pregnant Women

Data Source: GM HSCP



**2019/20 Flu Season:** Bolton Central PCN's all pregnant women vaccination uptake was 45.29%.

3 of 13 practices reached the 55% uptake target in 2019/20

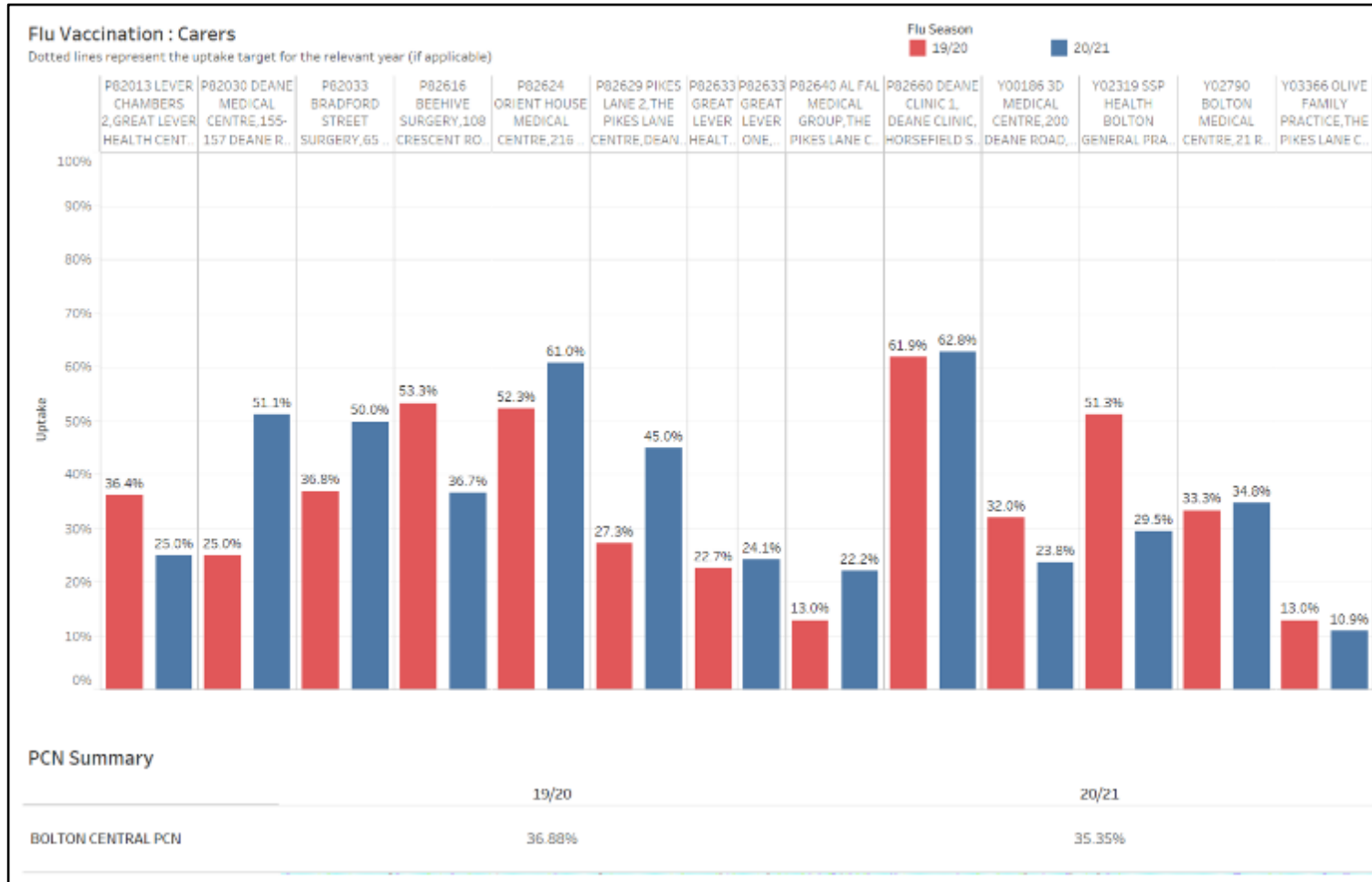
**2020/21 Flu Season:** Uptake was lower across the PCN with uptake of 34.20%.

No practices reached the revised 75% uptake target in 2020/21



# Flu Vaccination: Carers

Data Source: GM HSCP



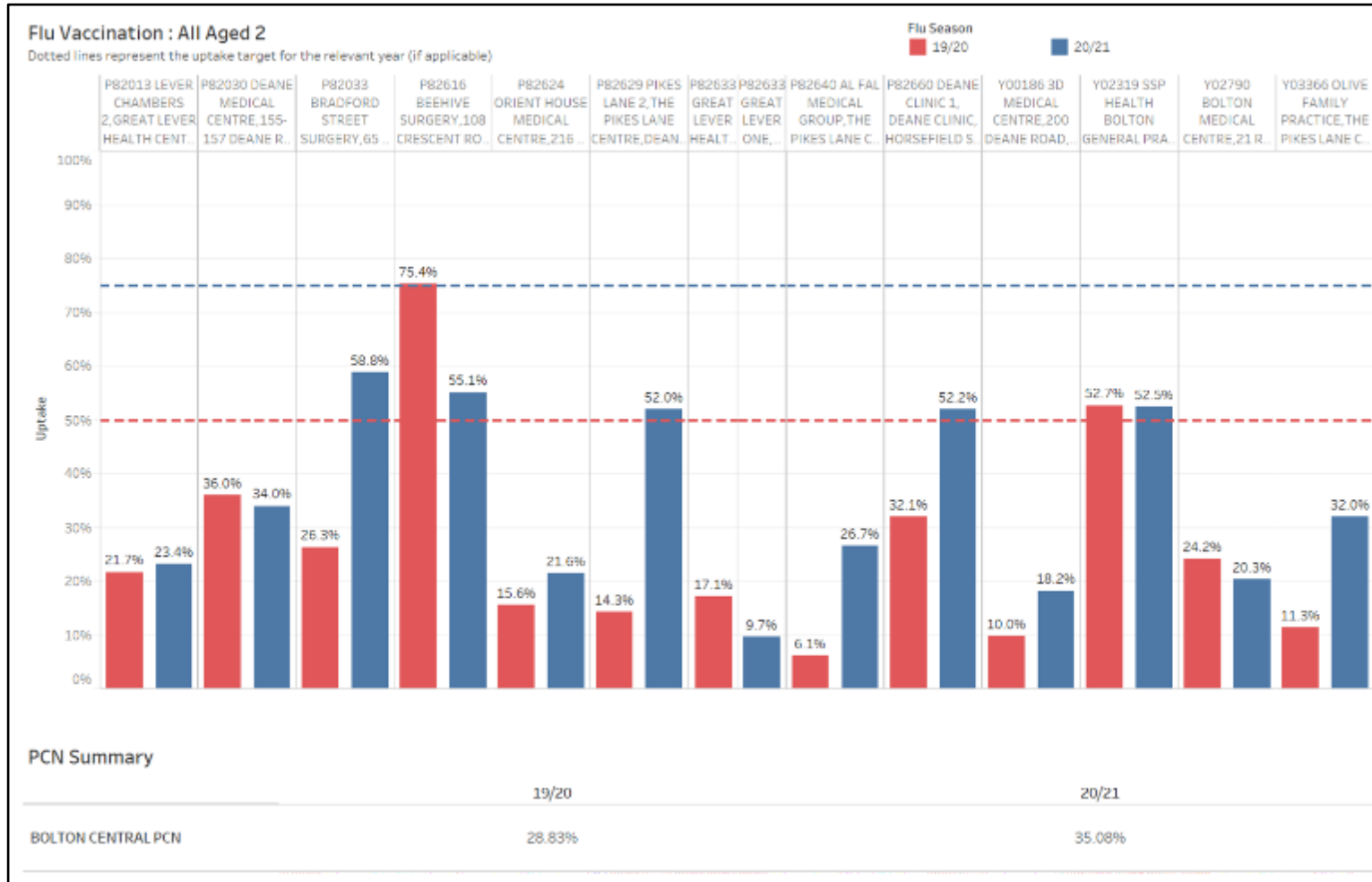
**2019/20 Flu Season:** Bolton Central PCN's carers vaccination uptake was 36.88%.

**2020/21 Flu Season:** Uptake was 35.35%, a similar level to the previous year, albeit individual practices had greater variation between the two periods.



# Flu Vaccination: All Aged 2

Data Source: GM HSCP



**2019/20 Flu Season:** Bolton Central PCN's all aged 2 vaccination uptake was 28.83%.

2 of 13 practices reached the target of 50% in 2019/20

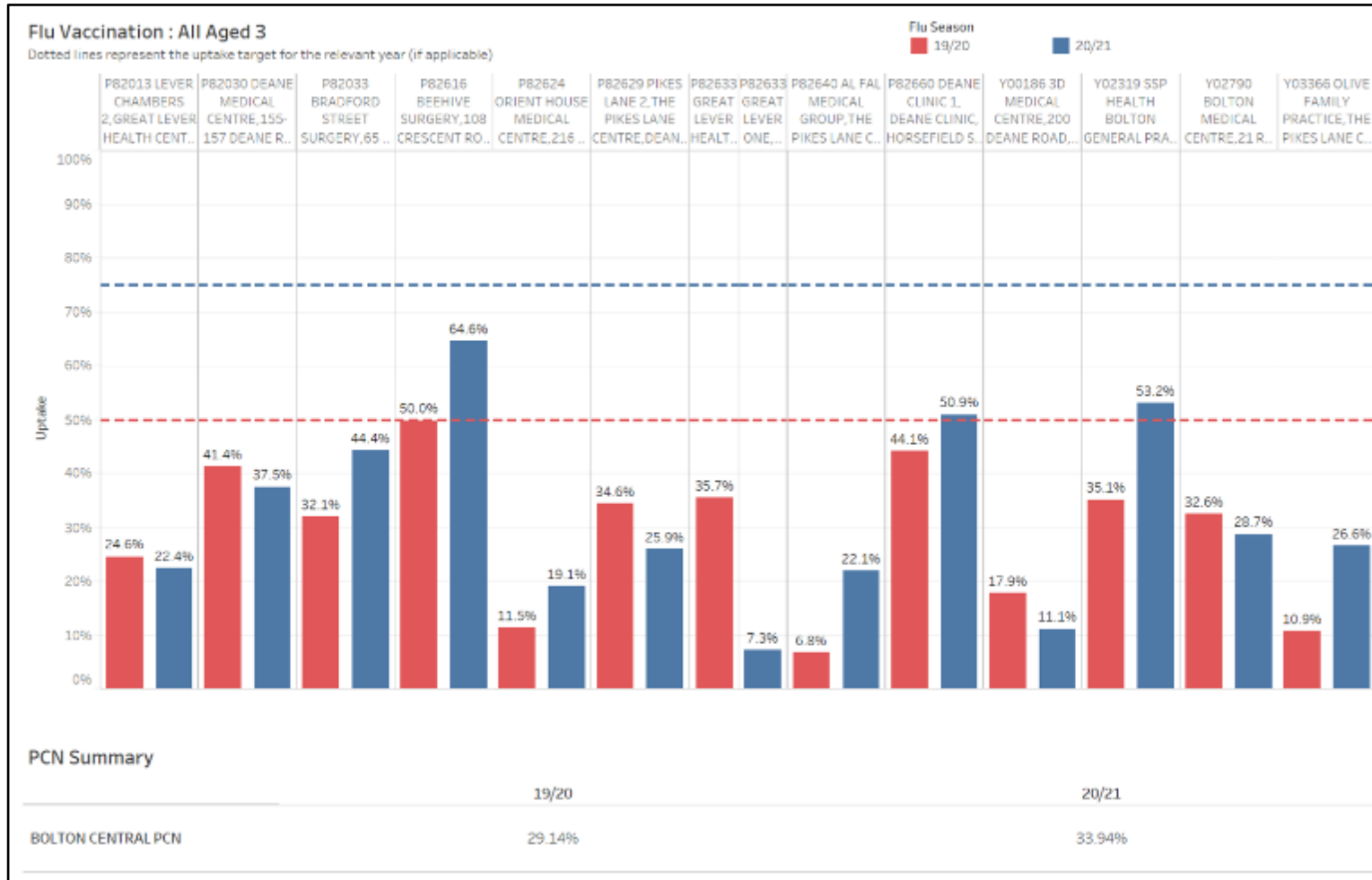
**2020/21 Flu Season:** Uptake was higher across the PCN at 35.08%.

However, no practices reached the revised 75% uptake target in 2020/21



# Flu Vaccination: All Aged 3

Data Source: GM HSCP



**2019/20 Flu Season:** Bolton Central PCN's all aged 3 vaccination uptake was 29.14%.

Only Beehive Surgery reached the target of 50% in 2019/20

**2020/21 Flu Season:** Uptake was higher across the PCN at 33.94%.

However, no practices reached the revised 75% uptake target in 2020/21





# Child Immunisations Up to Five Years of Age (GP)

Data Source: Child Health Information Systems, Public Health England, 2019/20

Expectation in the UK is that there is 95% coverage of all routine childhood immunisations for those up to five years of age (BMA, 2020).

**6-in-1 Vaccine**  
3 doses at 8,12 & 16 weeks

**Data Measure**  
% of children who received 3 doses of the 6-in-1 vaccine by their 1<sup>st</sup> birthday.

6-in-1 Vaccine	% Vaccinated
Westhoughton Network	98.00%
Horwich Network	96.88%
Turton	96.59%
Brightmet & Little Lever	95.81%
HWL Network	95.08%
Chorley Roads Network	94.18%
Farnworth & Kearsley	93.81%
Rumworth	92.86%
<b>Bolton Central</b>	<b>90.39%</b>
GM Average	93.47%
England Average	92.57%

**Hib/ MenC Booster**  
1 dose at 1 year

**Data Measure**  
% of children who received 1 dose of the Hib/ MenC booster (or 1 dose of the 6-in-1 vaccine and 1 dose of MenC) on or after their 1<sup>st</sup> birthday, up to their 2<sup>nd</sup> birthday.

Hib/MenC	% Vaccinated
Westhoughton Network	96.76%
Turton	96.43%
Farnworth & Kearsley	94.44%
Chorley Roads Network	93.99%
HWL Network	93.94%
Brightmet & Little Lever	93.60%
Horwich Network	92.94%
Rumworth	91.33%
<b>Bolton Central</b>	<b>90.46%</b>
GM Average	91.03%
England Average	90.56%

**4-in-1 Preschool Booster Vaccine**  
1 dose from 3 years & 4 months

**Data Measure**  
% of children who received a 4<sup>th</sup> dose of a diphtheria, tetanus, pertussis & polio containing vaccine given from 3 years & 4 months and before their 5<sup>th</sup> birthday.

4-in-1 Vaccine	% Vaccinated
Westhoughton Network	95.10%
Turton	92.16%
Brightmet & Little Lever	90.65%
Chorley Roads Network	89.23%
HWL Network	88.61%
Horwich Network	88.43%
Rumworth	87.80%
Farnworth & Kearsley	86.57%
<b>Bolton Central</b>	<b>81.27%</b>
GM Average	58.00%*
England Average	84.00%

\* Bury, Oldham, HMR and Trafford CCGs reported very low vaccination numbers



# Child Immunisations Up to 5 Years of Age (GP)

Utilisation Management Unit

Data Source: Child Health Information Systems, Public Health England, 2019/20

Expectation in the UK is that there is 95% coverage of all routine childhood immunisations for those up to five years of age (BMA, 2020).

**Pneumococcal (PCV) Vaccine**  
 For babies born before 1<sup>st</sup> January 2020: 2 doses at 8 & 16 weeks  
 For babies born after 1<sup>st</sup> January 2020: 1 dose at 12 weeks

**Pneumococcal (PCV) Booster Vaccine**  
 1 dose at 1 year

**Data Measure**  
 % of children who received 2 doses of the Pneumococcal vaccine before their 1<sup>st</sup> birthday.

**Data Measure**  
 % of children who received 1 dose of the Pneumococcal booster on or after their 1<sup>st</sup> birthday, up to their 2<sup>nd</sup> birthday.

PCV Vaccine	% Vaccinated
Westhoughton Network	98.00%
Turton	97.50%
Horwich Network	97.40%
HWL Network	96.39%
Brightmet & Little Lever	96.31%
Chorley Roads Network	95.24%
Farnworth & Kearsley	94.76%
Rumworth	93.41%
<b>Bolton Central</b>	<b>92.58%</b>
GM Average	94.95%
England Average	93.34%

PCV Booster	% Vaccinated
Westhoughton Network	96.76%
Turton	96.01%
Farnworth & Kearsley	94.44%
HWL Network	93.60%
Chorley Roads Network	93.21%
Brightmet & Little Lever	93.13%
Horwich Network	92.65%
Rumworth	91.07%
<b>Bolton Central</b>	<b>87.90%</b>
GM Average	94.95%
England Average	93.34%



# Child Immunisations Up to Five Years of Age (GP)

Utilisation Management Unit

Data Source: Child Health Information Systems, Public Health England, 2019/20

Expectation in the UK is that there is 95% coverage of all routine childhood immunisations for those up to five years of age (BMA, 2020).

**Rotavirus Vaccine**  
2 doses at 8 & 12 weeks

**MenB Vaccine**  
3 doses at 8 & 16 weeks and 1 year

**Data Measure**  
% of children who received 2 doses of the Rotavirus vaccine before 24 weeks of age.

**Data Measure**  
% of children who received 2 doses of the MenB vaccine by their 1<sup>st</sup> birthday.

Rotavirus	% Vaccinated
Turton	95.68%
Westhoughton Network	95.20%
Farnworth & Kearsley	92.62%
Brightmet & Little Lever	92.61%
Horwich Network	92.45%
Rumworth	89.84%
Chorley Roads Network	89.42%
HWL Network	87.21%
<b>Bolton Central</b>	<b>82.53%</b>
GM Average	90.86%
England Average	90.25%

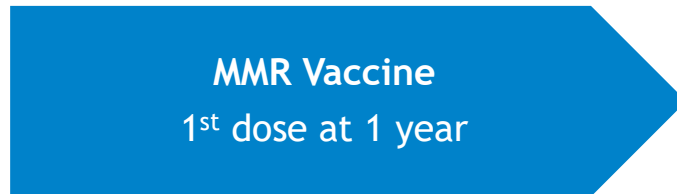
MenB Vaccine	% Vaccinated
Westhoughton Network	98.00%
Turton	97.27%
Brightmet & Little Lever	96.06%
Horwich Network	95.83%
HWL Network	95.74%
Farnworth & Kearsley	94.29%
Chorley Roads Network	94.18%
Rumworth	92.86%
<b>Bolton Central</b>	<b>90.54%</b>
GM Average	94.28%
England Average	92.58%

# Child Immunisations Up to Five Years of Age (GP)

Utilisation Management Unit

Data Source: Child Health Information Systems, Public Health England, 2019/20

Expectation in the UK is that there is 95% coverage of all routine childhood immunisations for those up to five years of age (BMA, 2020).



**Data Measure**  
% of children who received 1 dose of the MMR vaccine on or after their 1<sup>st</sup> birthday up to their 2<sup>nd</sup> birthday.

**Data Measure**  
% of children who received 2 doses of the MMR vaccine by their 5<sup>th</sup> birthday (where the 1<sup>st</sup> dose was given on or after their 1<sup>st</sup> birthday).

MMR 1 <sup>st</sup> dose	% Vaccinated
Westhoughton Network	97.48%
Turton	96.43%
Chorley Roads Network	95.82%
Brightmet & Little Lever	94.08%
Farnworth & Kearsley	93.98%
Horwich Network	93.82%
HWL Network	93.27%
<b>Bolton Central</b>	<b>92.20%</b>
Rumworth	91.33%
GM Average	92.45%
England Average	90.68%

MMR 1 <sup>st</sup> & 2 <sup>nd</sup> dose	% Vaccinated
Westhoughton Network	96.50%
Turton	94.23%
Chorley Roads Network	92.11%
Brightmet & Little Lever	91.76%
Rumworth	91.72%
HWL Network	90.19%
Horwich Network	90.05%
Farnworth & Kearsley	87.60%
<b>Bolton Central</b>	<b>84.75%</b>
GM Average	88.82%
England Average	86.93%



## 7.3 Cancer Screening



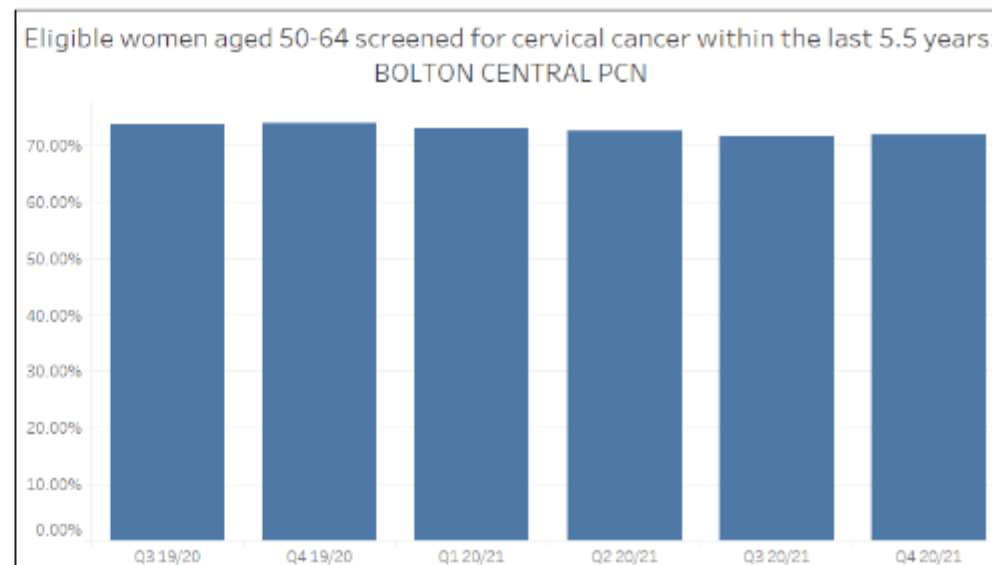
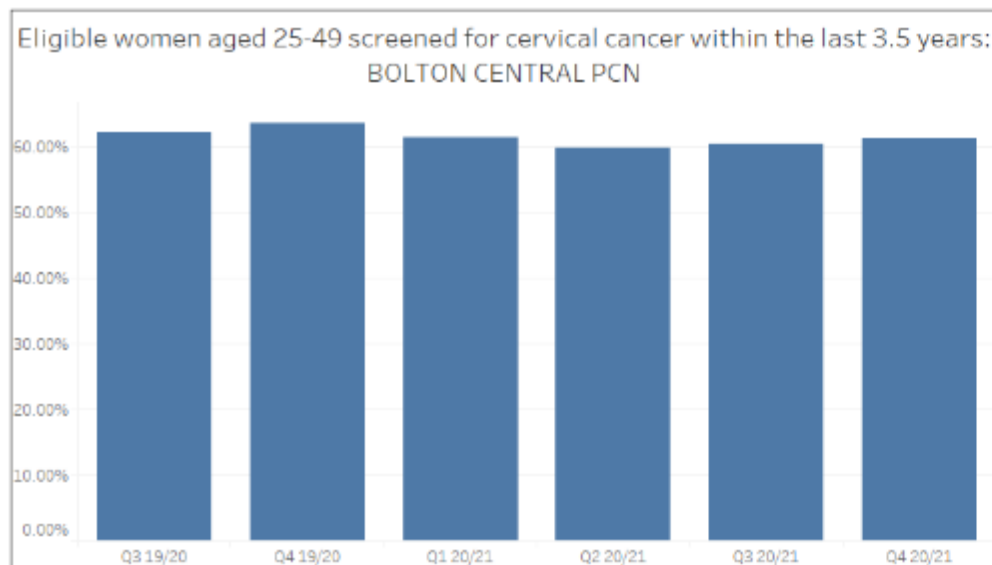
# Cervical Cancer Screening

Data Source: Public Health England, Q3 2019/20 to Q1 2020/21



Acceptable threshold i.e. lowest level of performance screening services are expected to attain = 80% (PHE, 2020)

Utilisation Management Unit



	Q3 19/20	Q4 19/20	Q1 20/21	Q2 20/21	Q3 20/21	Q4 20/21
BOLTON CENTRAL PCN	62.05%	63.42%	61.28%	59.80%	60.39%	61.19%
NHS BOLTON CCG	71.12%	71.62%	70.00%	68.71%	68.57%	69.61%
GM	71.13%	71.39%	69.74%	68.41%	67.97%	68.81%
England	70.64%	70.90%	69.34%	68.29%	68.09%	68.88%

	Q3 19/20	Q4 19/20	Q1 20/21	Q2 20/21	Q3 20/21	Q4 20/21
BOLTON CENTRAL PCN	73.70%	73.84%	72.88%	72.44%	71.60%	71.77%
NHS BOLTON CCG	77.01%	76.93%	76.38%	75.86%	75.17%	75.17%
GM	76.01%	76.01%	75.40%	74.70%	74.26%	74.22%
England	76.37%	76.33%	75.80%	75.28%	74.99%	74.96%



# Breast and Bowel Cancer Screening



## Breast

Data were only locatable by Local Authority

NHS Breast Screening Programme: Coverage of women aged 53 - <71 by Local Authority, as at 31st March sourced from NHS Digital

PHE (2020);

Acceptable (lowest) threshold = 70%

Achievable (aspire to) threshold = 80%

	2019	2020
<b>Bolton</b>	73.22%	74.68%
<b>GM</b>	71.51%	70.17%
<b>England</b>	74.58%	74.17%



## Bowel

Data were only locatable by CCG

The proportion of men and women aged 60 to 74 invited to participate in bowel cancer screening who adequately participate, sourced from Public Health England

PHE (2020);

Acceptable (lowest) threshold = 52%

Achievable (aspire to) threshold = 60%

	Q2 2020/21	Q3 2020/21	Q4 2020/21
<b>Bolton CCG</b>	65.20%	65.34%	68.78%
<b>GM</b>	64.91%	65.99%	69.50%
<b>England</b>	68.68%	68.97%	71.04%

Note: Whilst data was collected for Q1 2020/21 it was reportedly withdrawn due to low numbers at the beginning of the pandemic



## 7.4 Early Years





# Early Years Milestones



New birth visits

Proportion of infants receiving a new birth visit by a Health Visitor within 14 days of birth.

	2018/ 2019	2019/ 2020
Bolton	92.2%	*
NW	87.9%	87.3%
England	88.8%	86.8%



Breastfeeding at 6-8 weeks

Percentage of infants that are totally or partially breastfed at age 6-8 weeks.

	2018/ 2019	2019/ 2020
Bolton	41.1%	*
NW	38.9%	*
England	46.2%	48.0%



6-8 week reviews

Proportion of infants who received a 6-8 weeks review by the time they were 8 weeks old.

	2018/ 2019	2019/ 2020
Bolton	94.1%	*
NW	88.2%	85.9%
England	85.4%	85.1%



12-month reviews

Proportion of children who received a 12-month development review by the time they turned 15 months.

	2018/ 2019	2019/ 2020
Bolton	92.6%	*
NW	88.2%	88.5%
England	82.3%	83.6%



2- 2½ year reviews

Proportion of children who received a 2- 2½ year review by the time they turned 2½ years.

	2018/ 2019	2019/ 2020
Bolton	95.5%	*
NW	83.3%	82.6%
England	77.6%	78.6%

\* Value suppressed due to incompleteness of source data



# 08

---

## Wider Determinants of Health





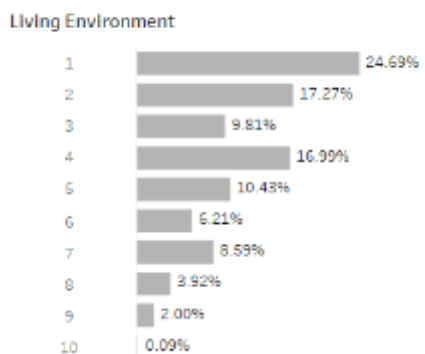
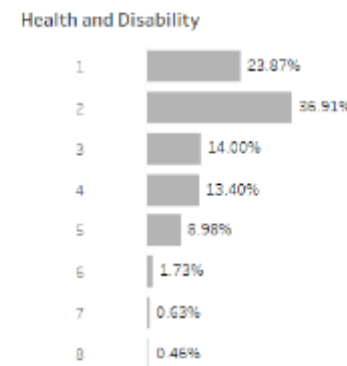
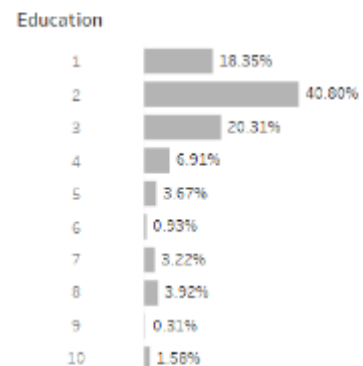
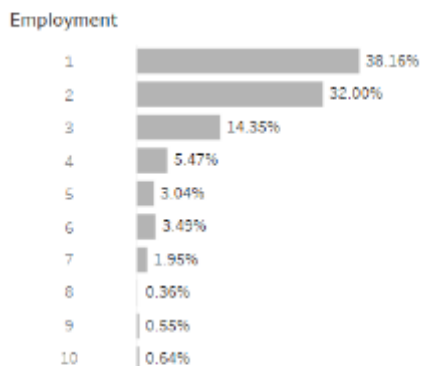
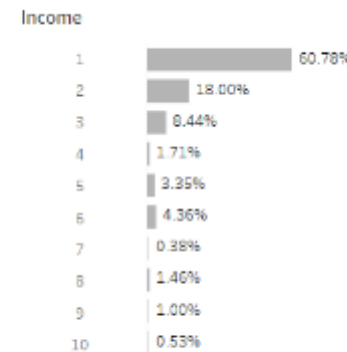
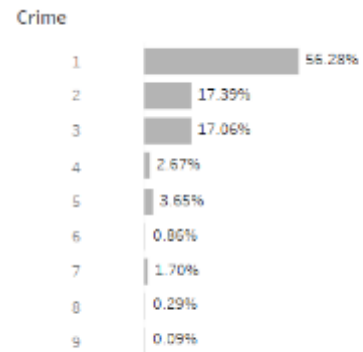
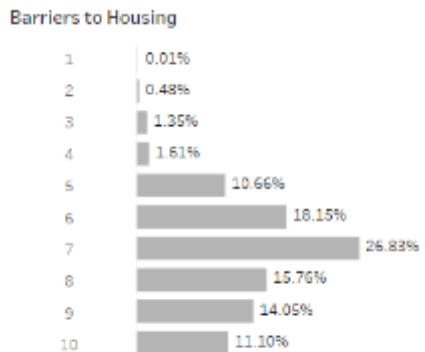
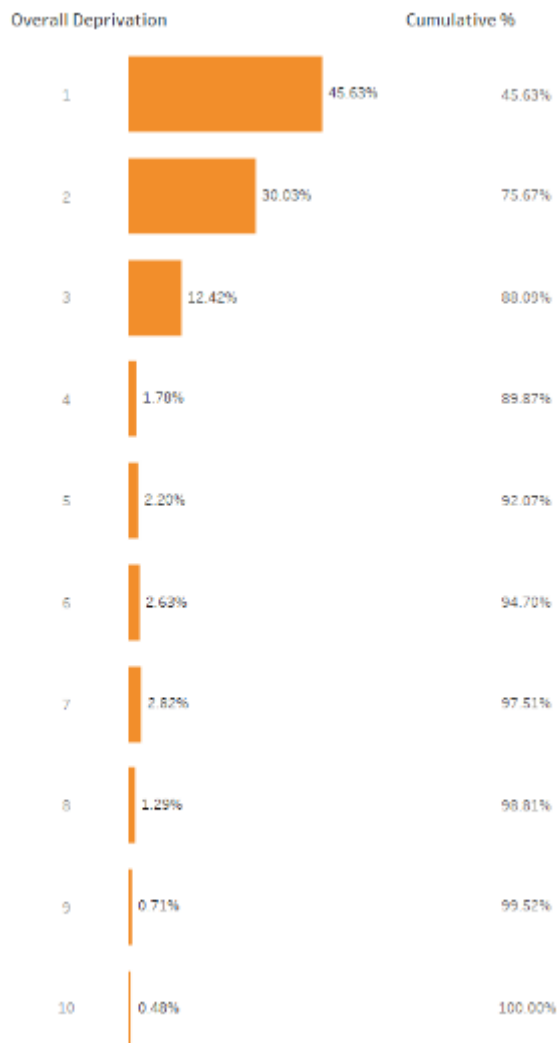
# Index of Multiple Deprivation (IMD)



## Utilisation Management Unit

### PCN population Deprivation Deciles

Charts show % of population in each decile. Decile 1=highest deprivation, decile 10=lowest deprivation.



**75.67% of the Bolton Central PCN population live in the top 20% of most deprived LSOAs in England.**



# Income and Children

Children (under 16 years of age) in RELATIVE low income families

‘Relative’ defined as a family income which is less than 60% of the median average income.

	2018/19	2019/20
Bolton	32.2%	32.7%
NW	22.8%	22.6%
England	18.2%	19.1%

Free school meals percentage uptake of all pupils (state funded nursery, primary, secondary or special school)

	2017	2018
Bolton	16.1%	15.8%
NW	16.1%	16.0%
England	13.9%	13.5%



# Looked After Children

Rate per 10,000 resident population aged under 18 years

	Bolton	North West	England
2011	83	77	59
2012	80	76	59
2013	83	79	60
2014	80	81	60
2015	86	82	60
2016	84	82	60
2017	87	86	62
2018	91	91	64
2019	95	94	65
2020	92	97	67

Data Source: Fingertips, Public Health England



# Child Development Milestones

Percentage of children who received a 2-2½ year review who were at or above the expected level in the five Ages and Stages Questionnaire-3 domains

	Bolton	North West	England
2017/18	*	79.0%	83.3%
2018/19	66.4%	78.4%	92.9%
2019/20	*	82.2%	83.3%

\* Value suppressed due to incompleteness of source data

Percentage of children achieving at least the expected level of development in communication, language and literacy skills at the end of Reception (school readiness)

	Bolton	North West	England
2012/13	47.6%	55.6%	56.9%
2013/14	54.2%	61.0%	63.6%
2014/15	61.1%	65.8%	68.3%
2015/16	64.6%	68.1%	70.8%
2016/17	66.1%	69.0%	71.8%
2017/18	67.5%	69.8%	72.4%
2018/19	67.3%	69.7%	72.6%





# Air Pollution

Fine particulate matter (PM2.5) is comprised of particles with a diameter smaller than 2.5µm. Sources can be industrial, commercial and agricultural in nature; however, road transport remains the biggest contributor to urban pollution.

PM2.5 can penetrate deep into the lungs and enter the blood stream. Exposure is associated with poor health outcomes from diseases, such as, asthma, COPD, lung cancer and coronary heart disease and impacts on low birth weight, diabetes and neurodegenerative diseases.

Whilst there are no established safe inhalation levels, the World Health Organisation (WHO) advocates a PM2.5 annual limit of 10µg/m<sup>3</sup> as a starting point to encourage progressive reductions.

Whilst predicted annual average data from the British Lung Foundation (2018) suggest that Bolton Central PCN practices are not located in areas which exceed WHO safe air pollution limits, it is acknowledged that actual PM2.5 levels may be greater in some areas when taking into consideration short-term exposure to high levels of fine particulate matter by the side of busy roads.

Bolton Central PCN	PM2.5 (µg/m <sup>3</sup> )
3D Medical Centre	8.53
Al Fal Medical Group	8.53
Beehive Surgery	8.43
Bolton General Practice	8.97
Bolton Medical Centre	8.22
Bradford Street Surgery	8.84
Deane Clinic 1	7.81
Deane Medical Centre	8.53
Dr M Dakshina-Murthi	8.53
Great Lever One	8.22
Lever Chambers 2	8.22
Olive Family Practice	8.53
Orient House Medical Centre	7.81

Data and Information  
Source: British Lung  
Foundation, 2018



09

---

## GP Practice Activity

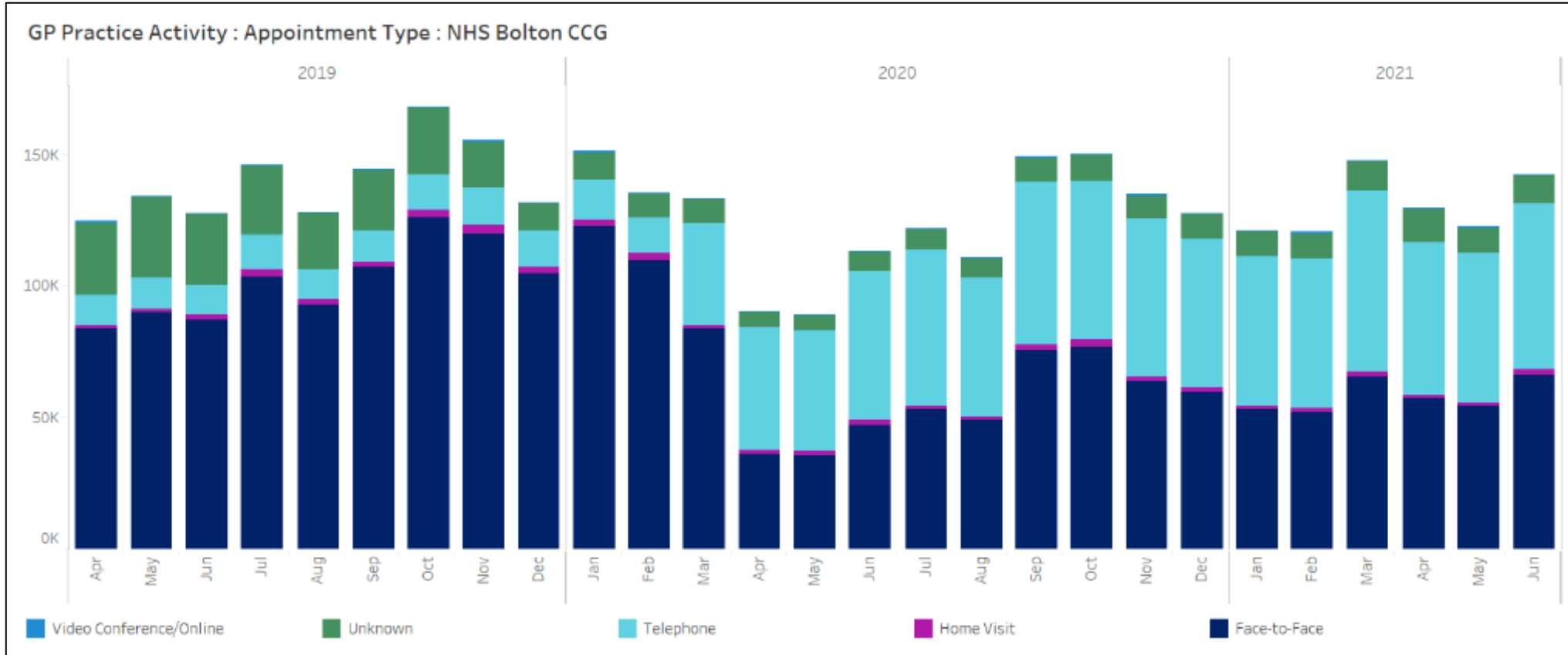






# GP Practice Activity: Appointment Type

Utilisation Management Unit



Type of GP Appointment	2019/20	2020/21
Face to Face	73.31% (n=1,233,552)	45.30% (n=669,877)
Telephone Consultation	10.65% (n=179,279)	46.19% (n=682,964)
Home Visit	1.58% (n=26,593)	1.34% (n=19,844)
Video Consultation/Online	0.05% (n=764)	0.07% (n=1,063)
Unknown	14.41% (n=242,460)	7.10% (n=104,982)

*Total appointment numbers were 12% lower in 20/21 than in 19/20.*

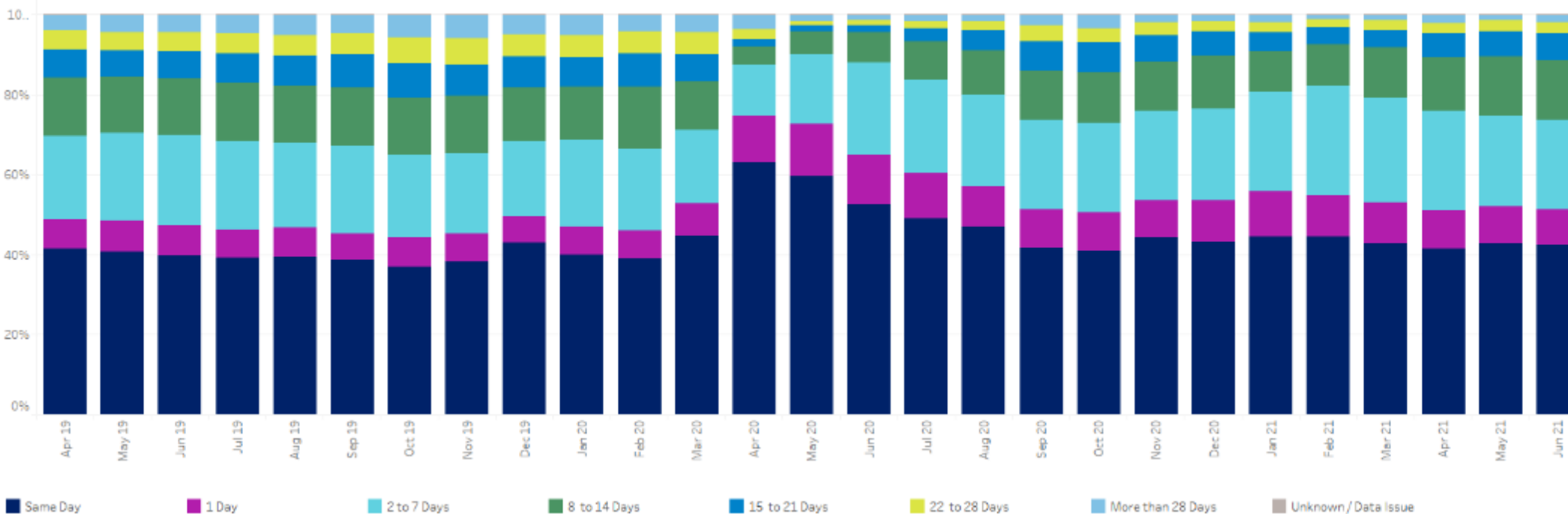
*Reduced face to face appointments and increased telephone consultations are attributable to the Covid 19 pandemic*

Data Source: GMHSCP

# GP Practice Activity: Time of Appointment

Utilisation Management Unit

GP Appointments by Time between Booking and Appointment Date: NHS Bolton CCG



Appointment Time Frame	2019/20	2020/21
Same Day	39.98% (n=672,805)	46.72% (n=690,916)
1 Day	7.18% (n=120,876)	10.57% (n=156,236)
2-7 Days	20.81% (n=350,180)	22.73% (n=336,114)
8-14 Days	14.09% (n=237,022)	10.57% (n=156,370)
15-21 Days	7.57% (n=127,396)	4.73% (n=69,877)
22-28 Days	5.40% (n=90,928)	2.52% (n=37,252)
> 28 Days	4.92% (n=82,750)	2.10% (n=31,100)
Unknown	0.04% (n=691)	0.06% (n=865)

*A higher proportion of appointments took place on the same day or the next day in 2020/21 than in 2019.20*

*Absolute numbers of same day and next day appointments also increased between the 2 financial years despite a 12% decrease in the total number of appointments.*

Data Source: GMHSCP



# 10

---

## Unplanned Hospital Activity





# 10.1 Total Activity

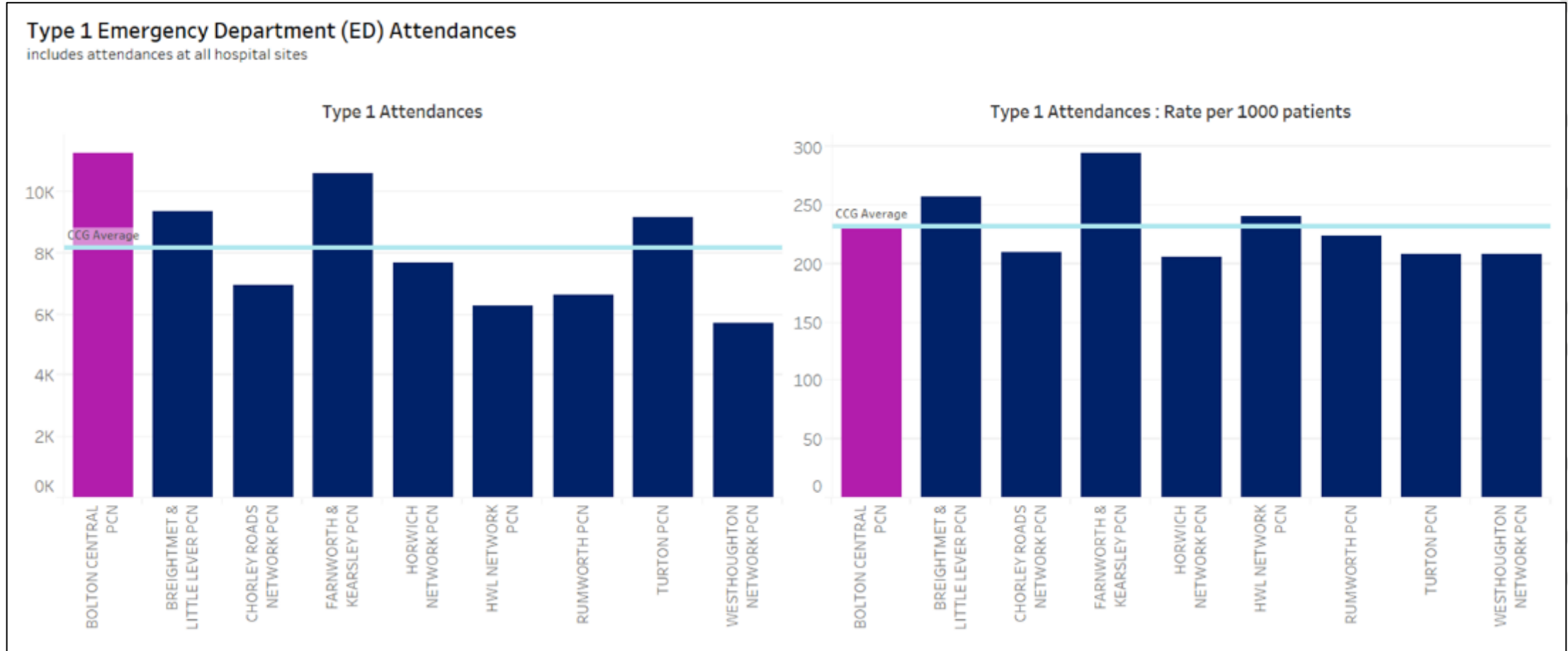


# Type 1 Emergency Department (ED) Attendances



Data Source: GMHSCP

Data Period: 2020/21



*The Bolton Central PCN population generated 11,274 Type 1 ED attendances during financial year 2020/21.*

*This equates to an attendance rate of 235 per 1000 patients.*



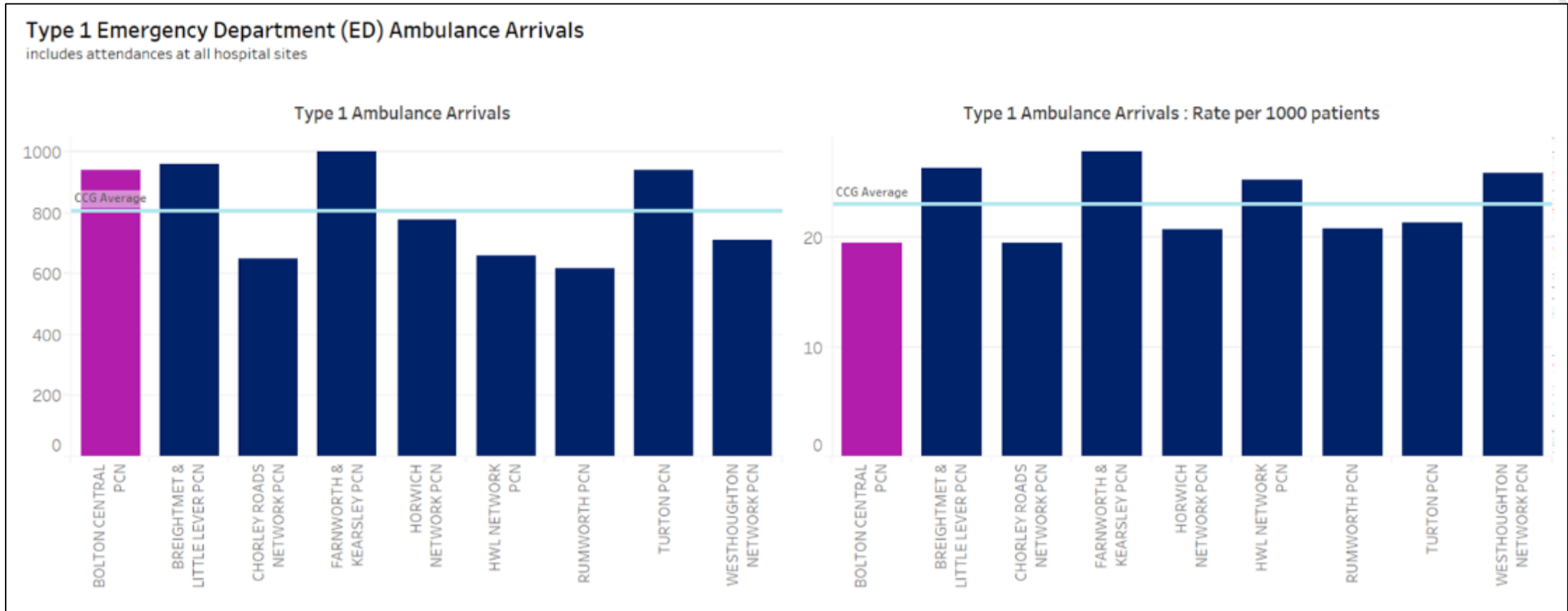
# Type 1 Emergency Department (ED) Ambulance Arrivals



Data Source: GMHSCP

Data Period: 2020/21

Utilisation Management Unit



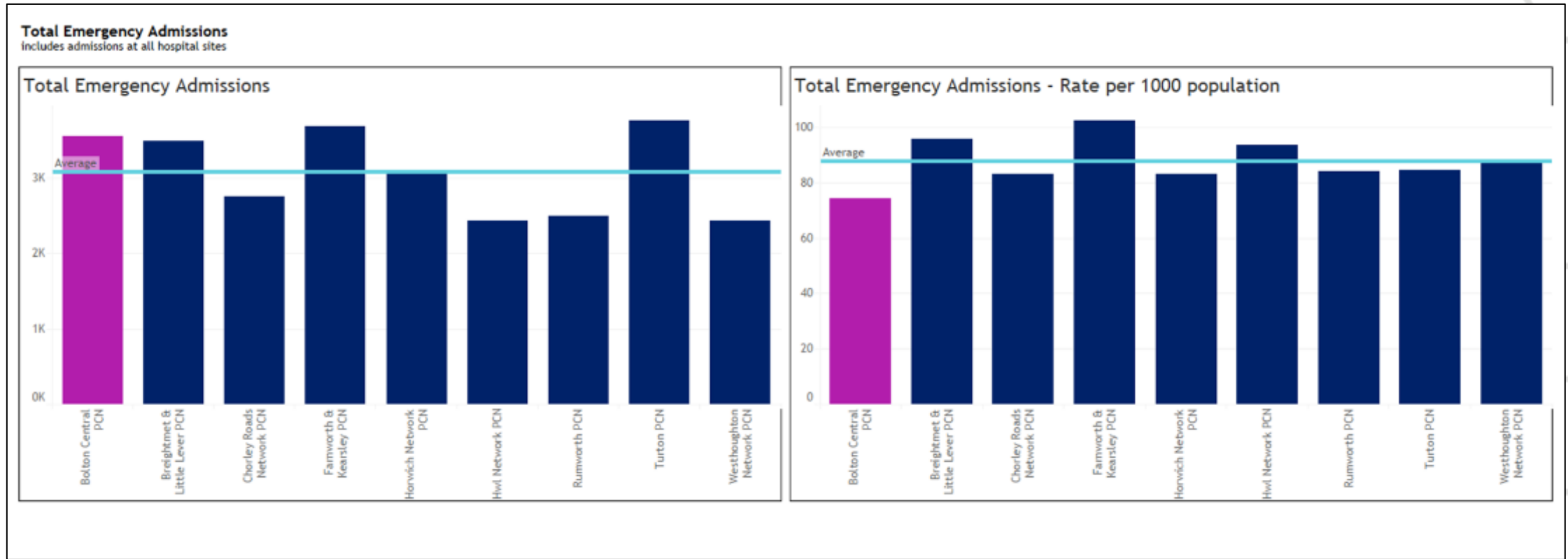
*The Bolton Central PCN population generated 940 ambulance arrivals during financial year 2020/21.*

*This equates to an ambulance arrival rate of 20 per 1000 patients.*



# Emergency Admissions

Data Source: GMHSCP      Data Period: 2020/21

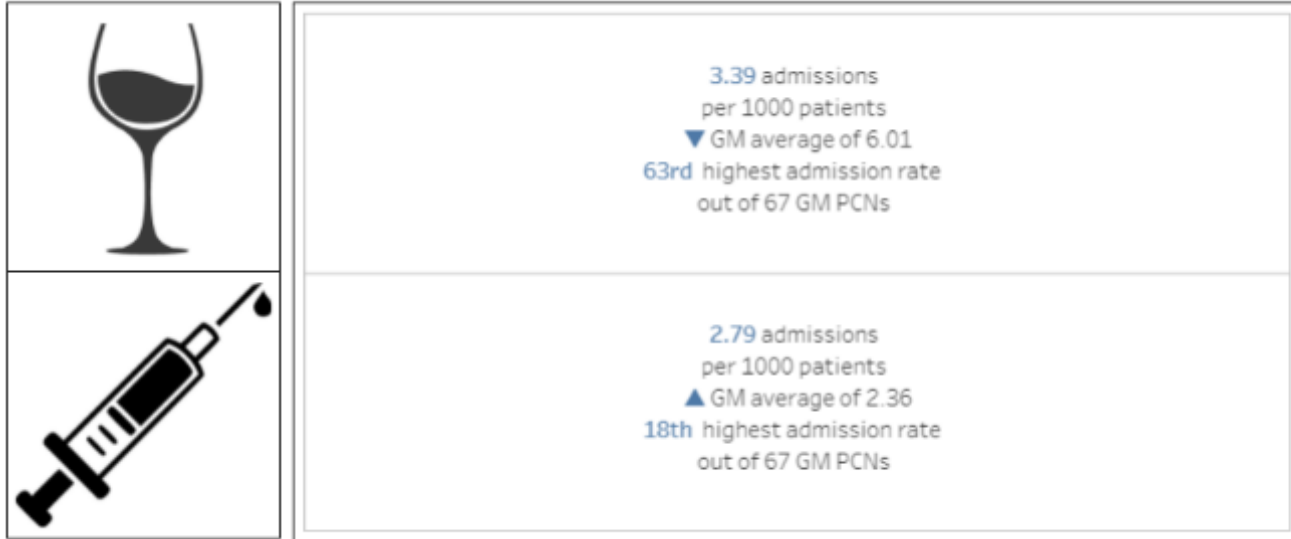


*The Bolton Central PCN population generated 3,565 emergency admissions during financial year 2020/21.*

*This equates to an emergency admission rate of 74 per 1000 patients.*



# Alcohol and Drug Related Admissions



Data Source: GMHSCP PCN Dashboard  
 Data Period: April 2020 - March 2021  
 Note: Data include emergency admissions to all hospital sites

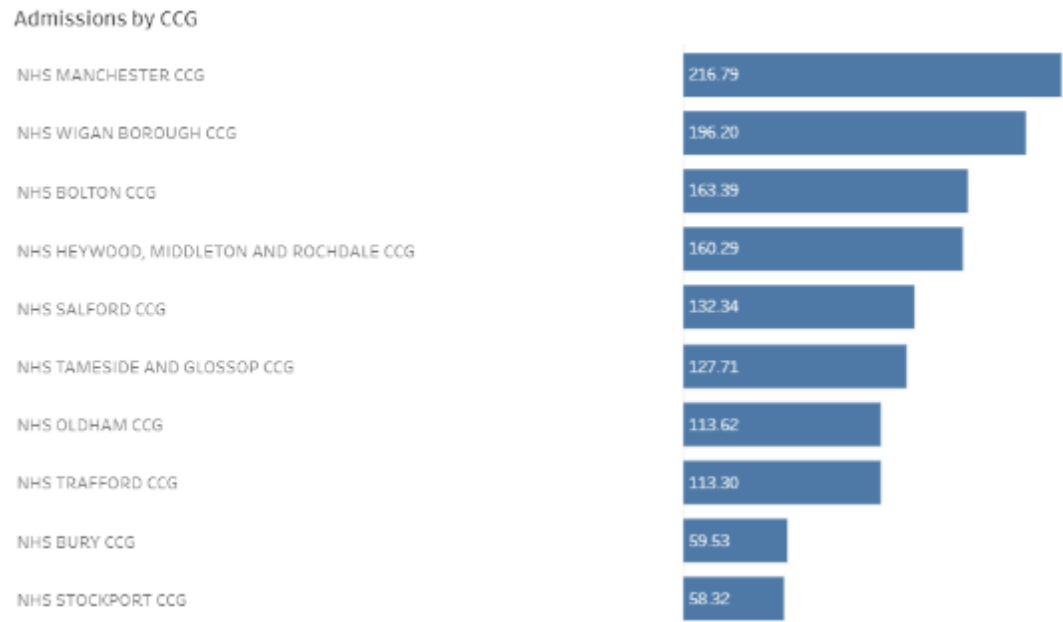
PCN	Alcohol Related Hospital Admissions (per 1000 population)	Drug Related Hospital Admissions (per 1000 population)
Bolton Central	3.39	2.79
Brightmet & Little Lever	6.06	2.04
Chorley Roads Network	3.88	1.21
Farnworth & Kearsley	7.35	2.21
Horwich Network	5.13	1.78
HWL Network	6.61	3.98
Rumworth	4.63	1.65
Turton	3.98	1.47
Westhoughton Network	4.77	0.76



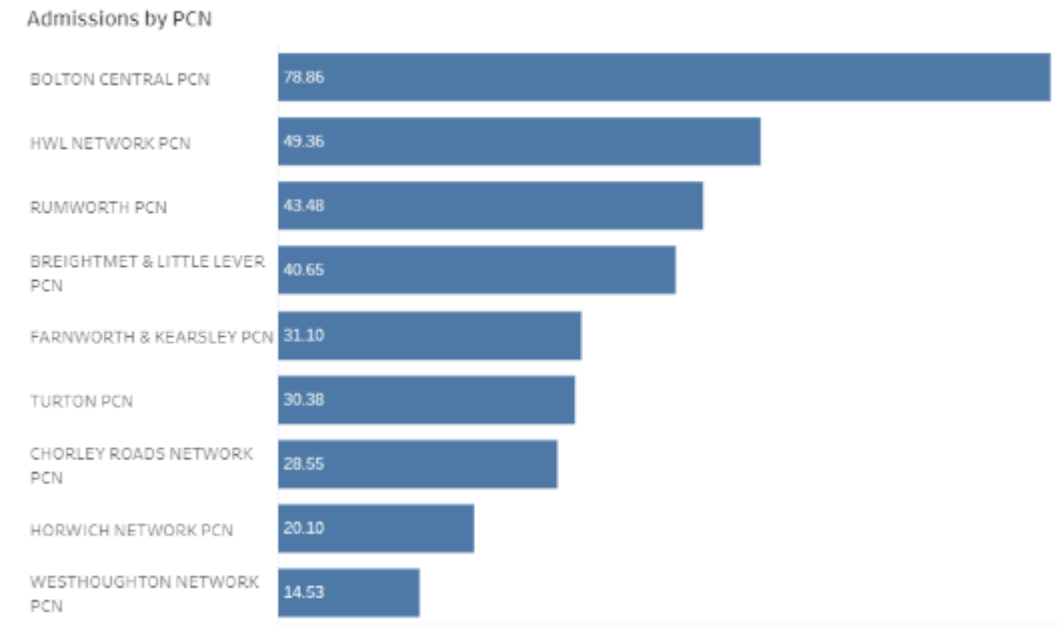
# Bolton Hospital Admissions with Covid-19 Diagnosis Code

Utilisation Management Unit

Admission Rate per 1000 population by CCG



Admission Rate per 1000 population by Bolton PCNs



*There were 3,339 Bolton hospital admissions with a Covid-19 diagnosis code, who were subsequently 'discharged' during the period, January 2020 to June 2021.*

*40% (n=1,329) died in hospital.*

*There were 507 Bolton Central PCN hospital admissions with a Covid-19 diagnosis code, who were subsequently 'discharged' during the period, January 2020 to June 2021.*

*30% (n=152) died in hospital.*

Data Source: GMHSCP, 01/01/2020 - 30/06/2021  
 Note: Data include only those with a Covid-19 diagnosis code (U07.1 or U07.2) on **DISCHARGE**  
 Note: Data include emergency admissions to all hospital sites

*Whilst these data only provide a snapshot they demonstrate some of the health impact of the COVID-19 pandemic, specifically in terms of PCN level hospitalisations.*



## 10.2 Children's Activity



# Emergency Department and Emergency Admission Activity

Data Source: Fingertips, Public Health England



ED attendance rate per 1000 resident population  
Aged 0-17 years

	Bolton	NW	England
2011/12	371	430	365
2012/13	389	453	371
2013/14	375	436	370
2014/15	365	438	383
2015/16	367	474	405
2016/17	359	496	412
2017/18	361	491	410
2018/19	365	489	422



Emergency admission rate per 1000 resident population  
Under 18 years

	Bolton	NW	England
2011/12	112.4	*	70.8
2012/13	109.8	97.3	73.1
2013/14	105.1	93.7	72.2
2014/15	105.5	96.8	73.3
2015/16	101.3	99.5	75.5
2016/17	100.5	100.8	75.8
2017/18	98.7	102.3	75.3
2018/19	98.1	107.5	77.9
2019/20	95.2	102.2	75.2

\* Not published, reason not provided



# Emergency Admissions: Asthma

Emergency admissions due to asthma

Rate per 100,000 resident population, aged 0-9 years

	Bolton	NW	England
2011/12	477	436	271
2012/13	419	483	308
2013/14	320	406	260
2014/15	343	457	280
2015/16	312	426	260
2016/17	372	377	256
2017/18	343	345	230
2018/19	318	322	220
2019/20	280	271	192

Emergency admissions due to asthma

Rate per 100,000 resident population, aged 10-18 years

	Bolton	NW	England
2011/12	139.2	153.7	108.3
2012/13	161.9	168.7	122.0
2013/14	158.4	167.1	122.0
2014/15	159.7	194.3	138.7
2015/16	191.8	186.0	132.0
2016/17	143.4	176.1	137.6
2017/18	158.1	198.6	133.7
2018/19	125.6	178.8	127.9
2019/20	154.5	170.3	123.4



# Mental Health Related Emergency Admissions

Emergency admissions for mental health disorders per 100,000 resident population, aged under 18 years

	Bolton	NW	England
2017/18	99.4	105.6	84.7
2018/19	88.7	104.3	88.3
2019/20	80.4	111.3	89.5

Emergency admissions due to self harm per 100,000 resident population, aged 10-14 years

	Bolton	NW	England
2017/18	151.5	313.5	210.4
2018/19	136.3	329.9	226.3
2019/20	133.1	326.8	219.8

Emergency admissions due to self harm per 100,000 resident population, aged 15-19 years

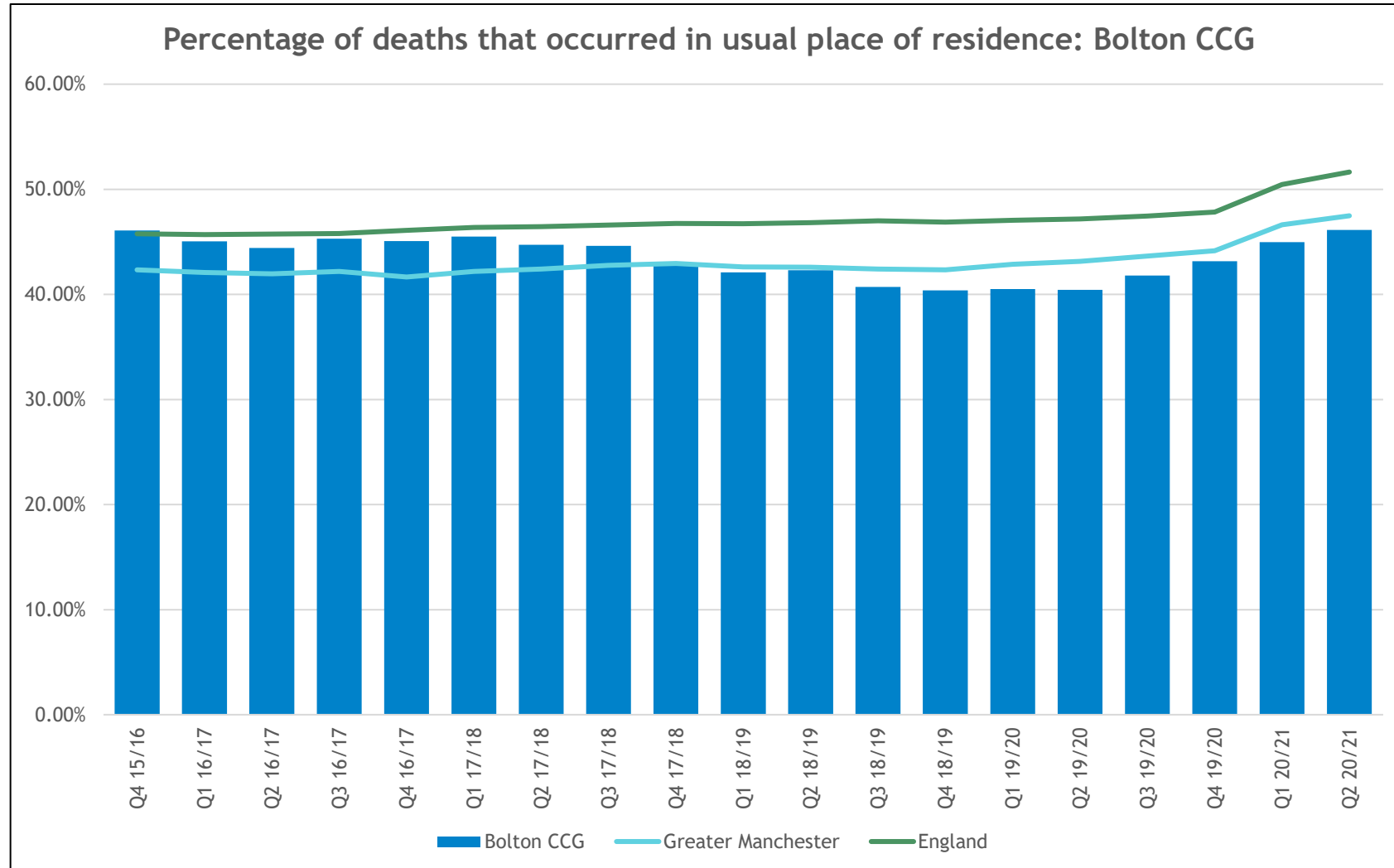
	Bolton	NW	England
2017/18	609.4	706.7	648.6
2018/19	511.6	730.4	659.5
2019/20	512.4	744.3	664.7



## 10.3 End of Life



# Deaths in Usual Place of Residence



Data Source: ONS

Figures are for the 12 month rolling period to the end of the listed quarter



# 11

---



## Summary





# Summary

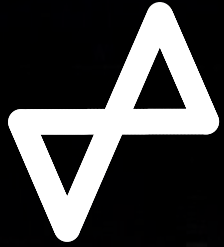
Utilising the data that are currently available it is not possible to comprehensively establish the nature, level and drivers of health inequalities across the nine Bolton PCNs.

Health outcome data do not appear to be available on a PCN footprint.

Whilst rich information is likely available at individual GP practice level, PCN aggregated and linked datasets are not accessible (for secondary use) to provide actionable insight into which communities and individuals to target, engage and work with where;

- Comparatively high disease prevalence exists.
- There are opportunities for life style interventions.
- There is overutilisation of unplanned services, such as, NHS 111 and ED, and underutilisation of preventative services, such as, annual health reviews and checks, immunisation and cancer screening.

Or to scrutinise practice level activity in order to identify, understand and reduce any unwarranted variation.



Health  
Innovation  
Manchester



Utilisation Management Unit

## Thank you

---

Clinical Contact: Debbie Atkinson RN (Adult)  
Clinical Development Lead  
Email: [debbie.atkinson3@nhs.net](mailto:debbie.atkinson3@nhs.net)

Analytical Contact: Sarah Fretwell  
Analytical Manager  
Email: [sarah.fretwell@nhs.net](mailto:sarah.fretwell@nhs.net)



DISCOVER



IMPROVE



EVALUATE



CHANGE