

Public Health COVID-19 data update

14th November 2021



Current alert level in Bolton: NATIONAL RESTRICTIONS

Estimated R number for the North West:

0.8-1.0 with a daily infection growth rate of -4% to 1% as of 12th November 2021

People tested positive in Bolton

Latest data provided on 15th November 2021, for the 7 day period to 9th November 2021

Average number per day (last 7 days): 124

Rate per 100k, all ages: **301.1** (↑ on previous 7 days)

Rate per 100k, age 60+: **164.5** (↓ on previous 7 days)

Total to date: 49,520

Deaths with COVID19

Latest data provided on 15th November 2021, for the 7 day period to 11th November 2021

Daily Royal Bolton Hospital deaths: **0**

Hospital deaths latest 7 days: **3**

www.england.nhs.uk

Latest data provided on 9th November 2021, for deaths registered up to 29th October 2021

Weekly: 3

Total to date: **879**

<https://coronavirus.data.gov.uk/>

Healthcare

Patients admitted in Bolton

Latest data provided on 15th November 2021, reported up to 9th November 2021

People in hospital: **49** (↑)

People on ventilation: **4** (↓)

Testing

Tests carried out in Bolton

Latest data provided on 15th November 2021, for the 7 day period to 6th November 2021

Number PCR tests last 7 days: 9,700

PCR Positivity: 9.2% (↑)

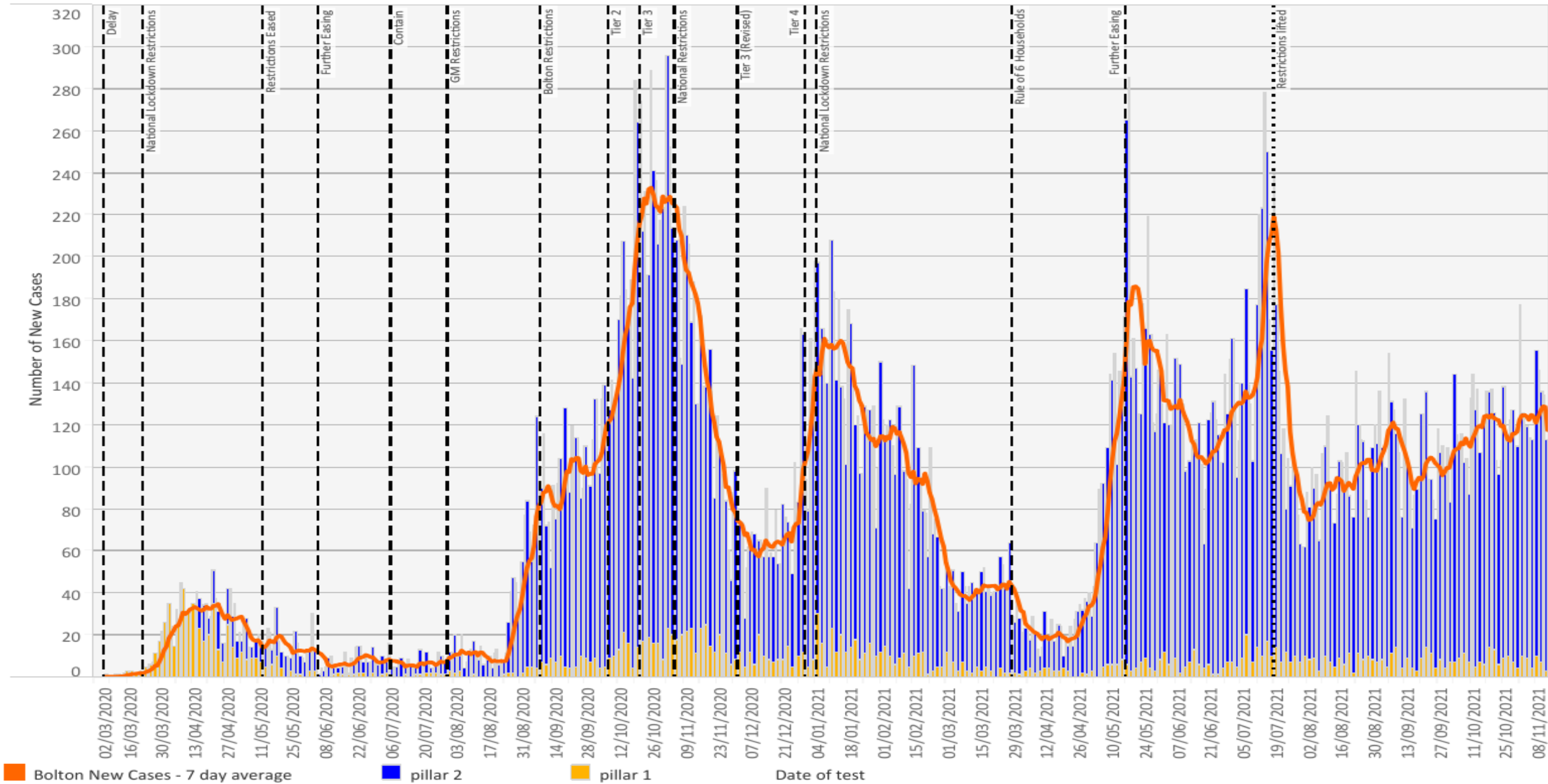
Vaccinations

Vaccinations administered Bolton CCG

Latest data announced on 15th November 2021, for the period 8th December 2020 to 7th November 2021

Under 18:	1 st dose: 14.8%	2 nd dose: 3.3%
18 to 29:	1 st dose: 65.1%	2 nd dose: 53.5%
30 and over:	1 st dose: 84.9%	2 nd dose: 80.2%

Bolton new COVID-19 cases timeline, by testing pillar



Bolton cases by age - heatmap

Number of new weekly COVID-19 cases by age for Bolton

Age Bracket	19/09/2021 - 25/09/2021	26/09/2021 - 02/10/2021	03/10/2021 - 09/10/2021	10/10/2021 - 16/10/2021	17/10/2021 - 23/10/2021	24/10/2021 - 30/10/2021	31/10/2021 - 06/11/2021	07/11/2021 - 13/11/2021
0-15	260	257	297	269	249	162	209	220
16-24	51	49	48	47	70	48	74	67
25-34	79	76	62	92	88	94	127	126
35-44	108	96	115	118	153	140	160	142
45-54	102	92	116	121	110	122	144	114
55-64	61	73	82	92	90	136	89	96
65-74	44	29	50	59	72	74	48	33
75-84	17	24	19	28	21	28	18	18
85+	5		8	7	5	8	6	8

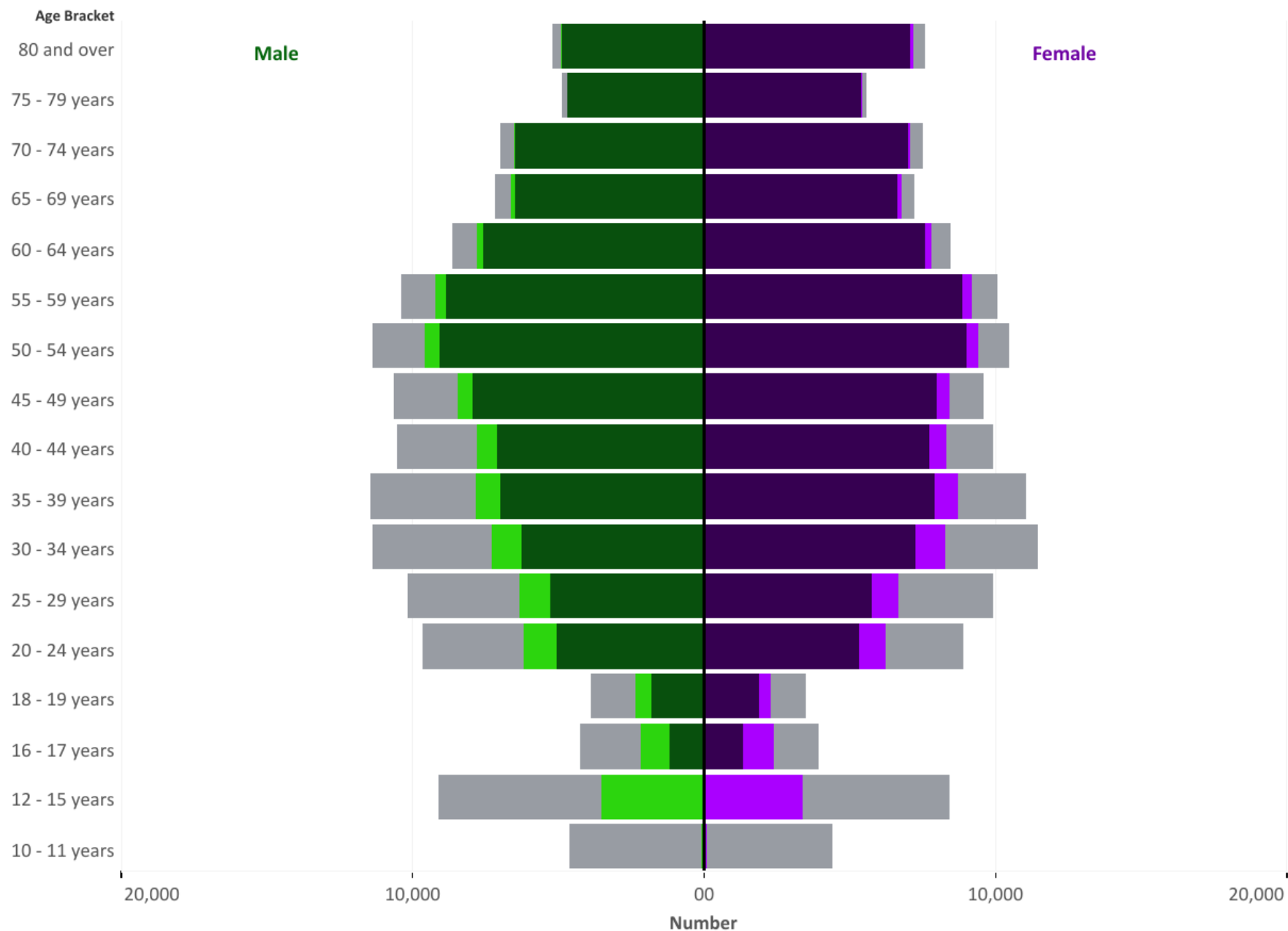


Bolton cases by ward

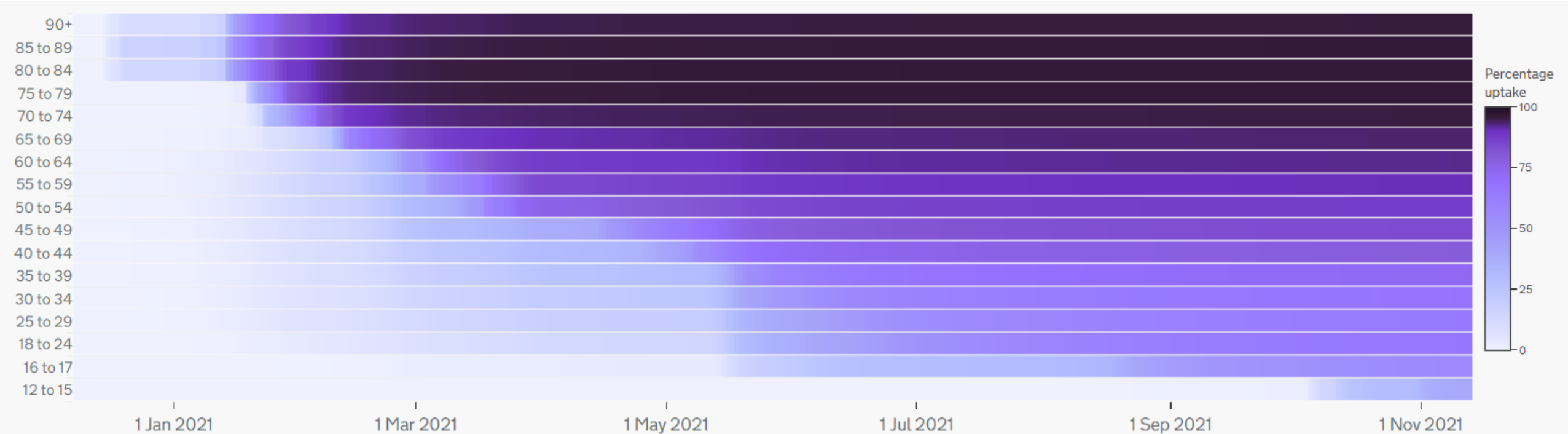
	Prior week (2021-10-24 to 2021-10-30)		Most recent week (2021-10-31 to 2021-11-06)		Change in rates between the two weeks	
Ward name	Cases	Rate	Cases	Rate	Absolute Difference	Relative
Astley Bridge	43	304.3	56	396.2	91.9	=
Bradshaw	35	308.9	50	441.3	132.4	Increase
Breightmet	54	383.6	50	355.2	-28.4	=
Bromley Cross	32	237	49	362.9	125.9	Increase
Crompton	31	184.2	37	219.9	35.7	=
Farnworth	55	331.6	58	349.7	18.1	=
Great Lever	42	256.1	35	213.4	-42.7	=
Halliwell	30	196.6	18	118	-78.6	=
Harper Green	31	202.9	38	248.8	45.9	=
Heaton and Lostock	44	307.9	33	230.9	-77	=
Horwich and Blackrod	44	328.6	38	283.8	-44.8	=
Horwich North East	42	349.3	34	282.8	-66.5	=
Hulton	45	308.2	44	301.3	-6.9	=
Kearsley	51	351.8	51	351.8	0	=
Little Lever and Darcy Lever	26	206.5	42	333.5	127	Increase
Rumworth	14	79.1	24	135.5	56.4	=
Smithills	35	239.8	39	267.2	27.4	=
Tonge with the Haulgh	37	256.8	36	249.9	-6.9	=
Westhoughton North and Chew Moor	69	496.5	71	510.9	14.4	=
Westhoughton South	53	412.3	69	536.8	124.5	Increase

Vaccine delivery in Bolton by age and sex

The number of people who are unvaccinated, men with **one** or **two** doses and women with **one** or **two** doses



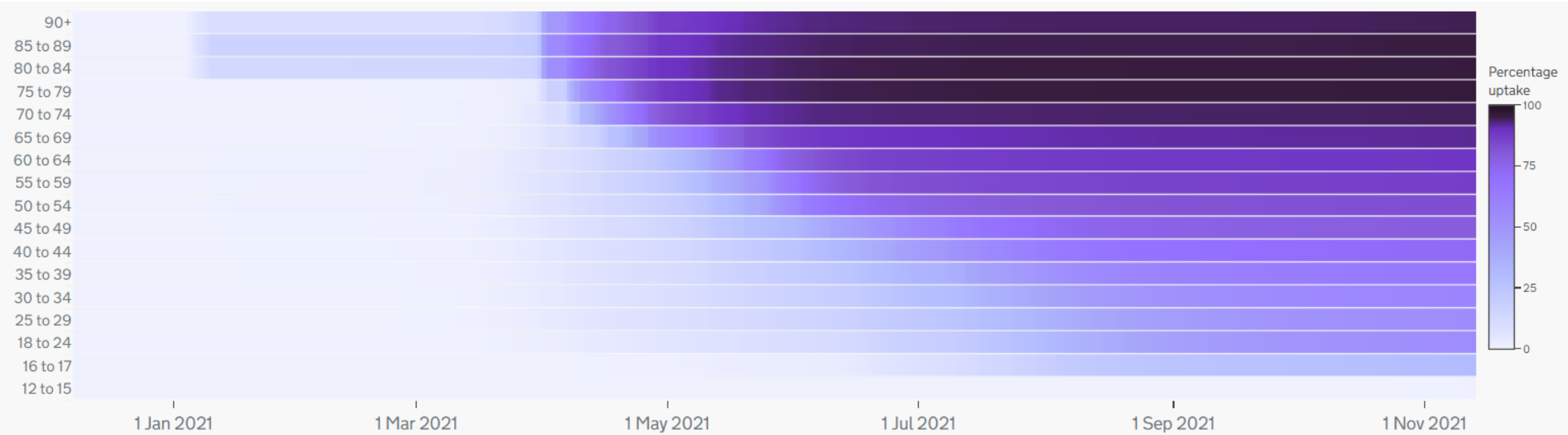
Bolton Vaccinations by age 1st Dose



- Total percentage of people by age group who have received a COVID-19 vaccination, shown by vaccination date
- Daily figures include all vaccines that were given up to and including the date shown
- 94% of Bolton residents aged 60+ have received the 1st dose of the vaccination
- Uptake for 30+ residents for 1st dose has been increasing over the last few months although has begun to slow
- Around 65% of all 18-29-year-olds in Bolton have now received their 1st dose

Bolton Vaccinations by age

2nd Dose

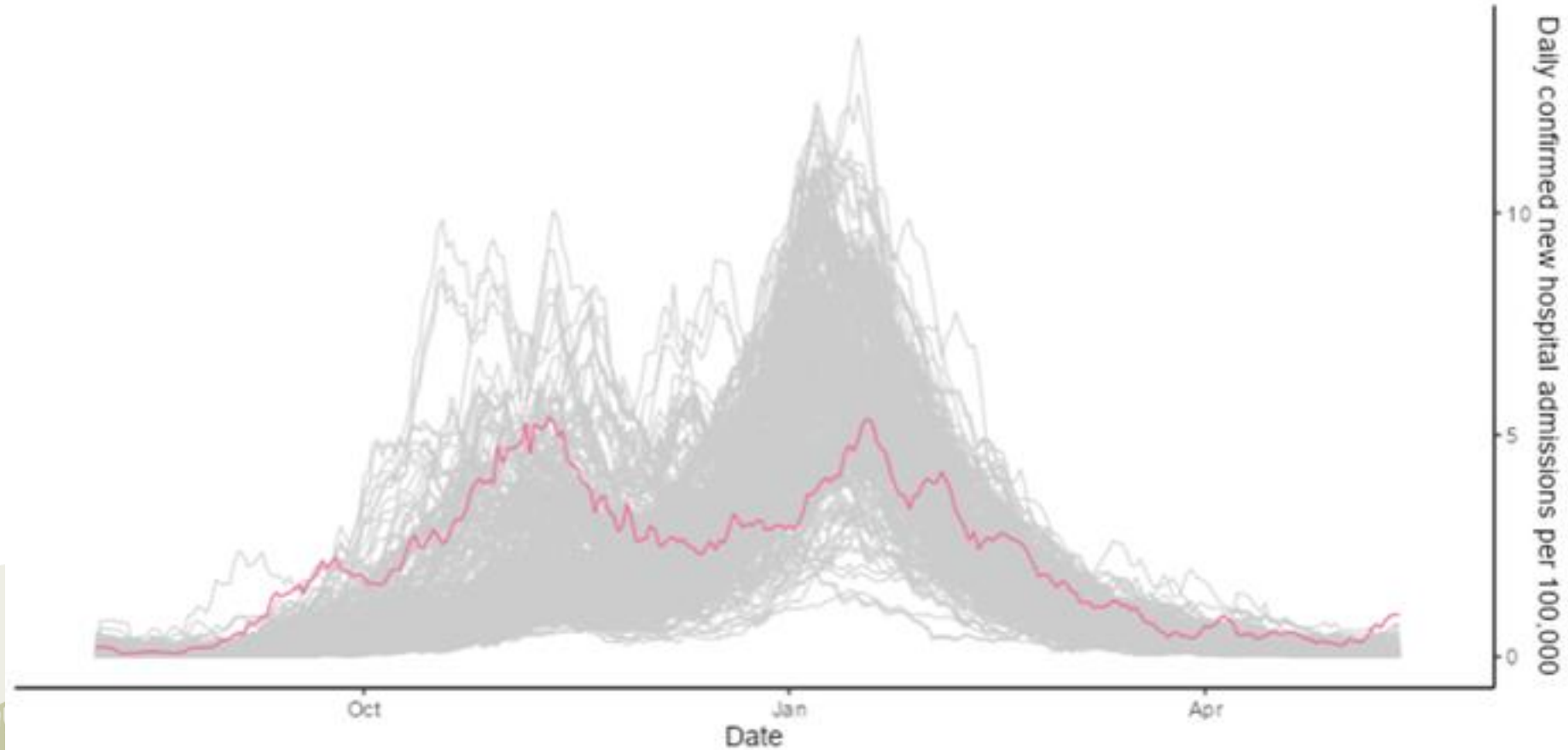


- Total percentage of people by age group who have received a COVID-19 vaccination, shown by vaccination date
- Daily figures include all vaccines that were given up to and including the date shown
- Around 80% of all Bolton residents aged 30+ have now received the 2nd dose of the vaccination
- The proportion of residents to receive the 2nd dose aged 60 and over has increased to over 92%
- Over half of all 18–29-year-olds in Bolton have received their 2nd dose

COVID-19 cases in hospitals in Bolton vs. the rest of England

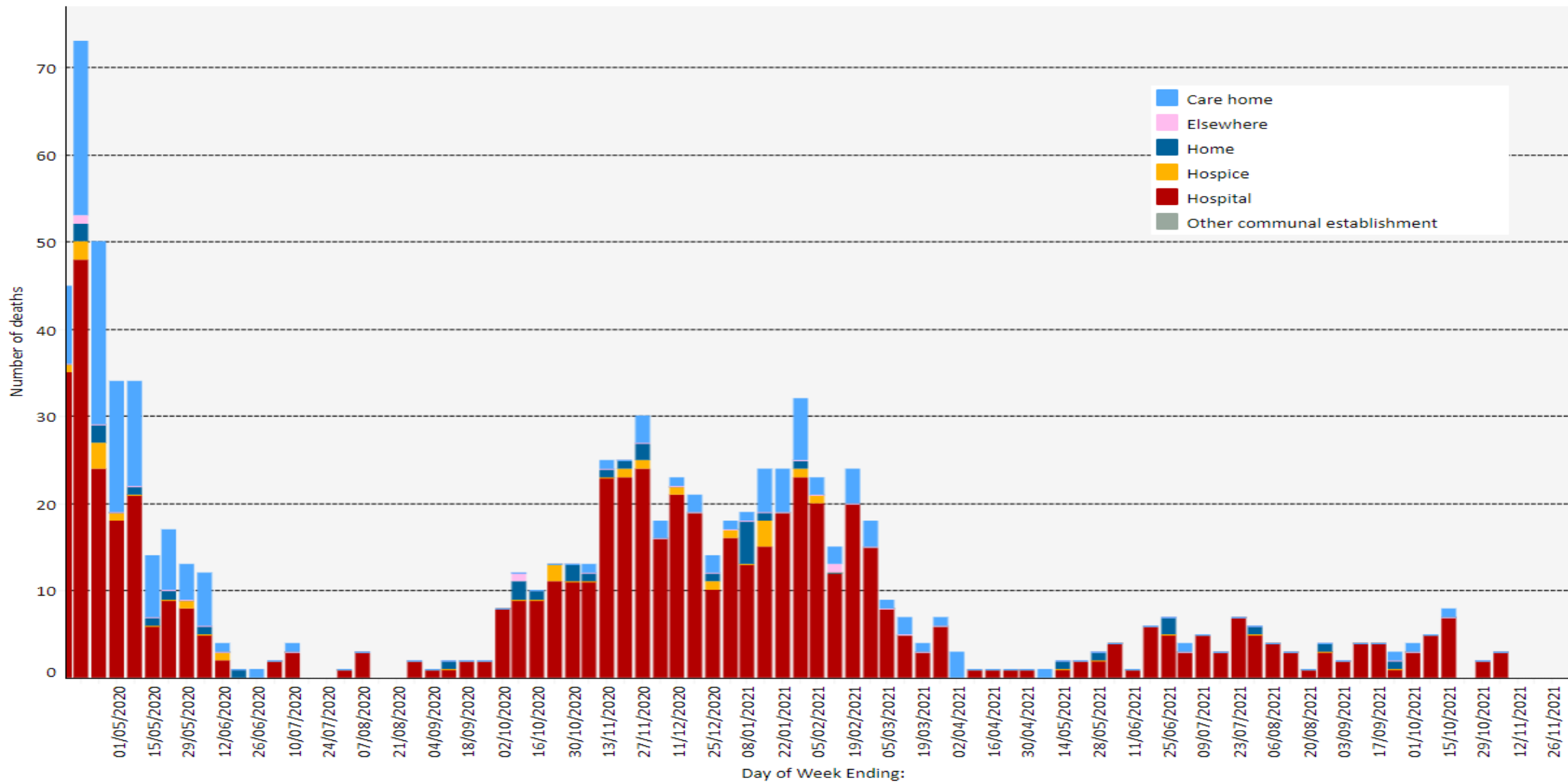
Rolling 7-day average of confirmed new COVID-19 admissions per 100,000 inhabitants in Bolton compared to other Local Authorities in England. Data is published at NHS Trust level, so these figures are apportioned between Local Authorities using data on the proportion of admissions to each trust originating from each LA in 2016-18. A small number of admissions from mental health specialist trusts are excluded from these plots. Admissions data is published weekly, so may be missing for more recent days.

Rise in hospital admissions is apparent but not currently as marked as the rise in case rates



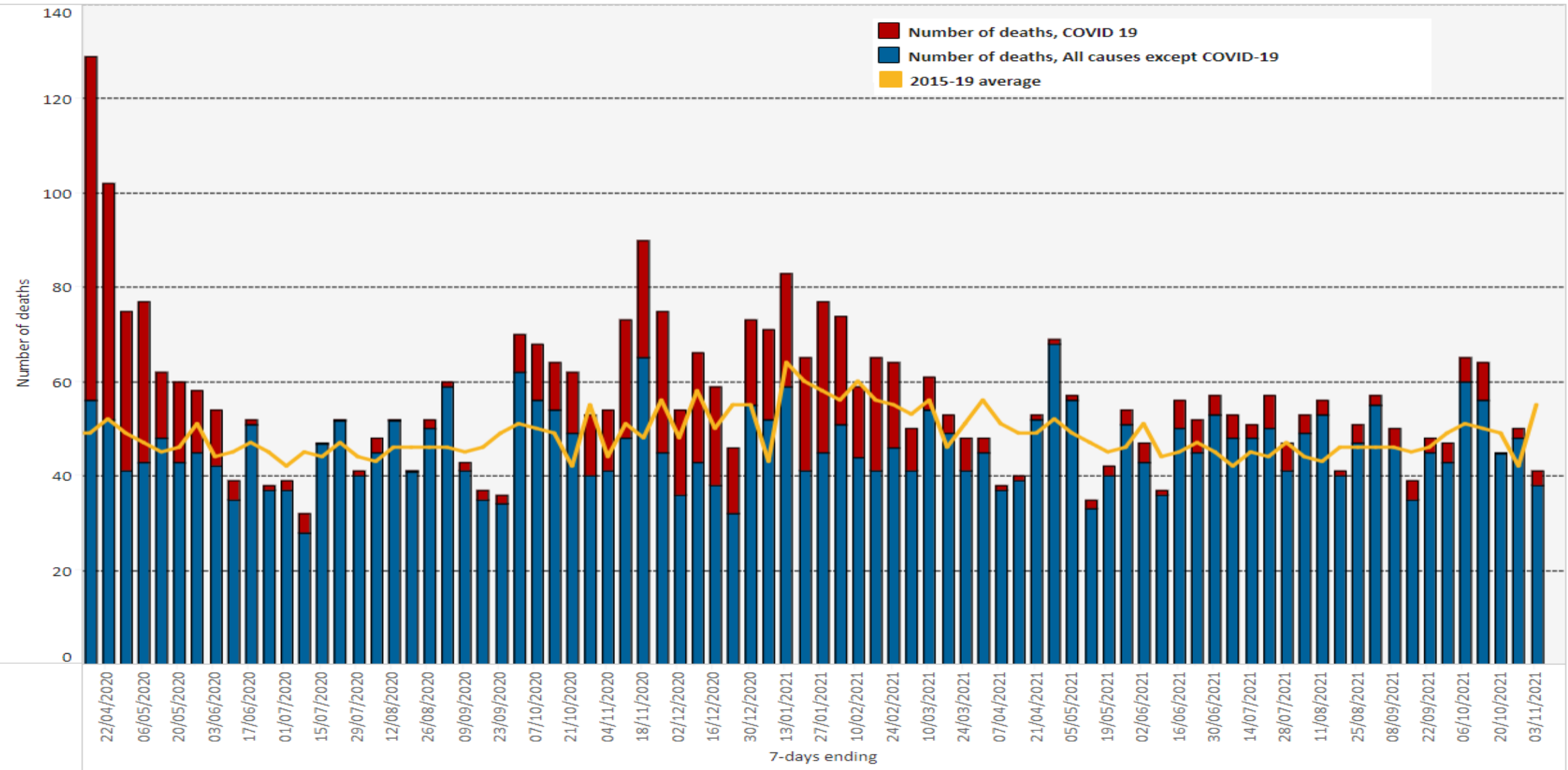
Deaths with COVID-19 by week and place of death, Bolton 2020

Place of death
 ▾



- Total number of deaths to Bolton residents involving COVID-19 occurring up to 5th November 2021 = **890**
- Includes all deaths occurring elsewhere, e.g. care homes, hospice, at home
- Over the last month, there were **13** COVID-19 deaths in total occurring mainly in hospital
- For the most current week, there were **3** deaths, all occurring in hospital, registered for the 7 days up to 13th November 2021

Deaths by week of occurrence for Bolton



- From October to the end of January, the number of deaths to Bolton residents was consistently above the average for the last 5 years
- During February, Bolton has seen significant decreases in all deaths, with deaths from COVID-19 continuing to reduce into April
- Since the end of March, weekly numbers for all deaths and all causes except COVID in Bolton, had been below or around average
- Bolton has seen an increase in COVID-19 deaths during the summer months, and recorded the highest number of deaths during September/October since February this year

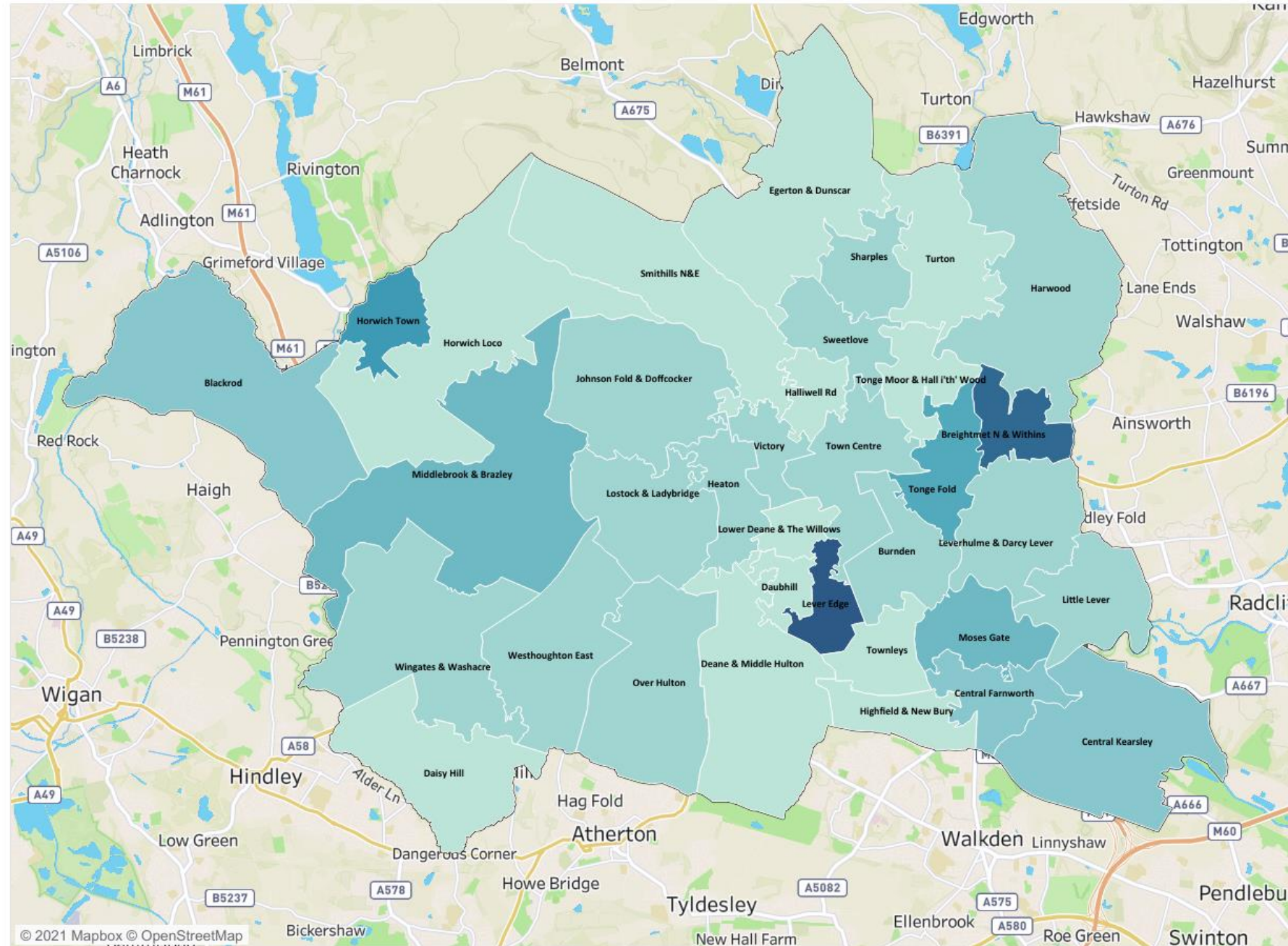
The SAVI is a measure of COVID-19 vulnerability for each MSOA in England

It investigates the association between BAME, Care Homes, overcrowded households and admissions for long-term health conditions

The areas with the highest increase in risk in Bolton are Brightmet N & Within and Lever Edge

Small Area Vulnerability Index

Measuring the increase in risk across Bolton by MSOA



Find out more at:

www.boltonjsna.org.uk/coronavirus

